

Gastric Carcinogenesis in the miR-222/221 Transgenic Mouse Model

Boram Choi, MS¹, **Jieun Yu**, PhD¹, **Tae-Su Han**, PhD², **Young-Kook Kim**, PhD^{3,4}, **Keun Hur**, PhD⁵, **Byeong-Cheol Kang**, PhD⁶,
Woo-Ho Kim, PhD^{1,7}, **Dae-Yong Kim**, PhD^{1,8}, **Hyuk-Joon Lee**, PhD^{1,9}, **V. Narry Kim**, PhD³, **Han-Kwang Yang**, MD, PhD^{1,9}

¹Cancer Research Institute, Seoul National University College of Medicine, Seoul, Korea, ²Division of Genetics, Cancer Research Institute, Kanazawa University, Kanazawa, Japan, ³Center for RNA Research, Institute for Basic Science, Korea School of Biological Sciences,

Seoul National University, Seoul, ⁴Department of Biochemistry, Chonnam National University Medical School, Gwangju,

⁵Department of Biochemistry and Cell Biology, Cell and Matrix Research Institute, Kyungpook National University School of Medicine, Daegu,

⁶Department of Experimental Animal Research, Biomedical Research Institute, Seoul National University Hospital, Seoul,

⁷Department of Pathology, Seoul National University College of Medicine, Seoul,

⁸Department of Veterinary Pathology, College of Veterinary Medicine, Seoul National University, Seoul,

⁹Department of Surgery, Seoul National University College of Medicine, Seoul, Korea

Supplementary Data

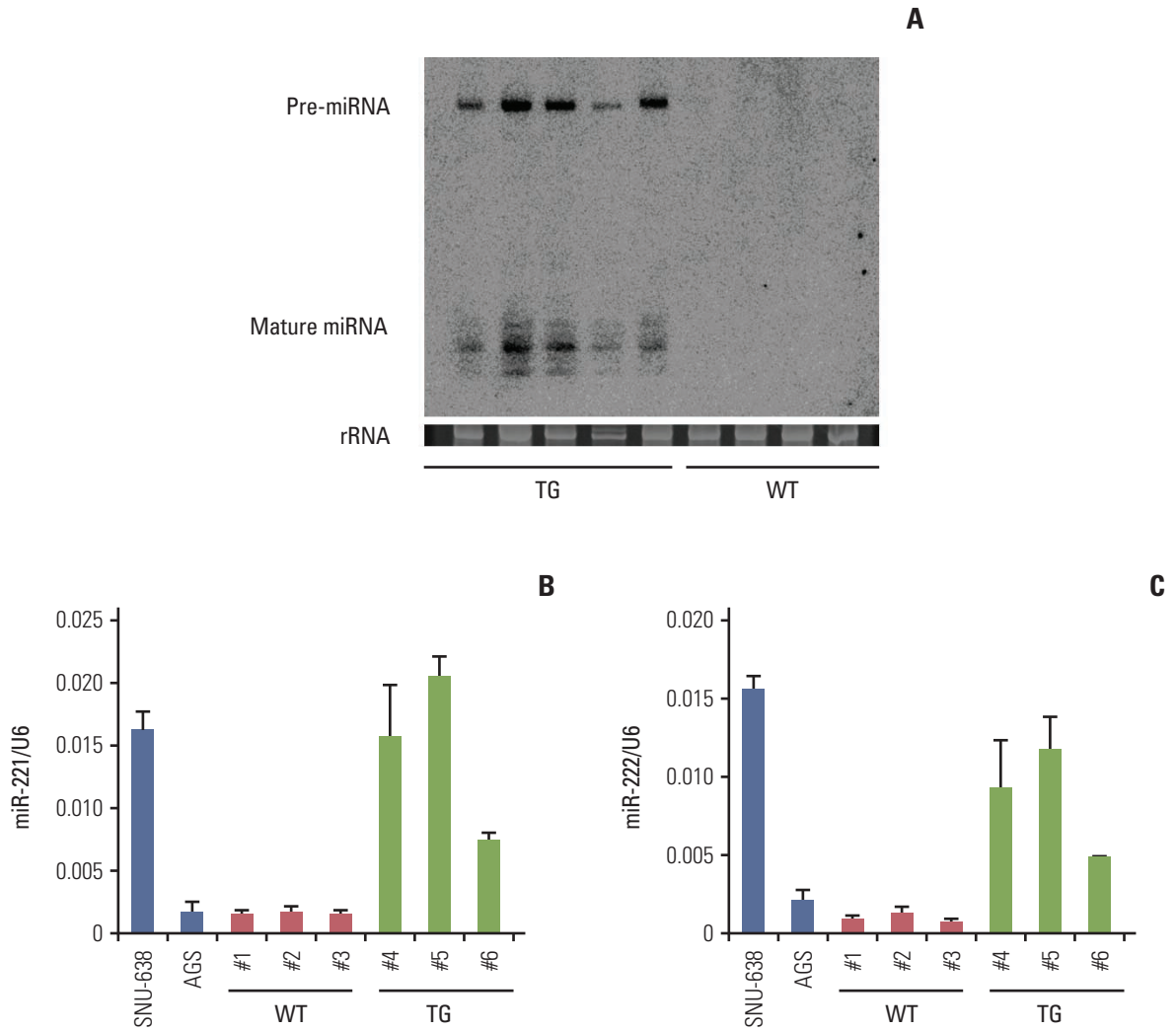
Table of Contents

Supplementary Table 1	2
Supplementary Fig. S1	3

Supplementary Table 1. Primers for TG mouse produce and screening

miR-222/221 expression analysis	Forward primer (5'→3')	Reverse primer (5'→3')
miR-222/221 produce	GGATCCTCACTCAGCAG TATCTG TTGGATAAG	CGAGAAATCATT TGCTGA GGTGAT
TG mouse screening by PCR	CGCTATTACCATGGTGATGCG	CTACTG AGCCATTGAGGGTAC
Gene expression analysis by qPCR	Forward primer (5'→3')	Reverse primer (5'→3')
TG mouse transmission test	CGCTATTACCATGGTGATGCG	CTACTGAGCCATTGAGGGTAC
miR-221 screening	ACACTCCAGCTGGGAGCTA CATTGTCTGCT	CTCAACTGGTGTCTGGAGTCG GCAATTCAGTTGAGGAAACCCA
miR-222 screening	ACA CTCCAGCTGGGAGCTACATCT GGCTACTG	CTCAACTGGTGTCTGGAGTCG GCAATTCAGTTGAGGAGACCCA
URP	TGG TGT CGT GGA GTC G	
Norther blot analysis probe	Forward primer (5'→3')	
miR-221	GAAACCCAGCAGACAATGTAGCT	
miR-222	GAGACCCAGTAGCCAGATGTAGCT	

TG, transgenic; PCR, polymerase chain reaction; qPCR, quantitative real-time polymerase chain reaction.



Supplementary Fig. S1. Verification of the expression level of miR-222/221 in transgenic (TG) mouse and wild-type (WT) mouse after *N*-nitroso-*N*-methylurea (MNU) treated.