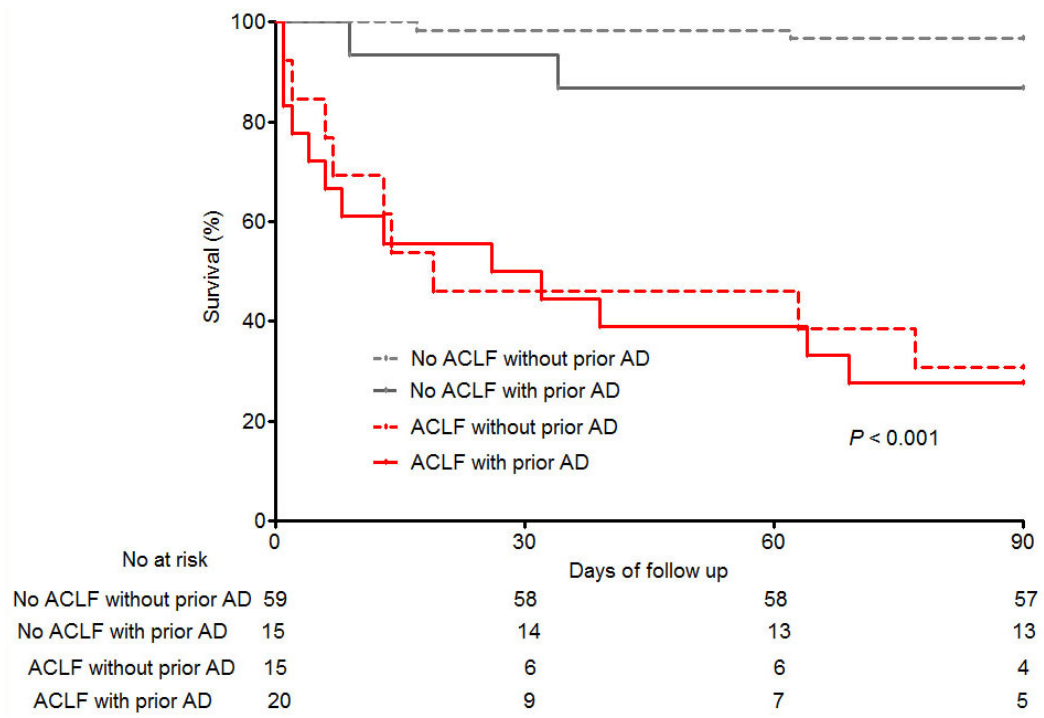
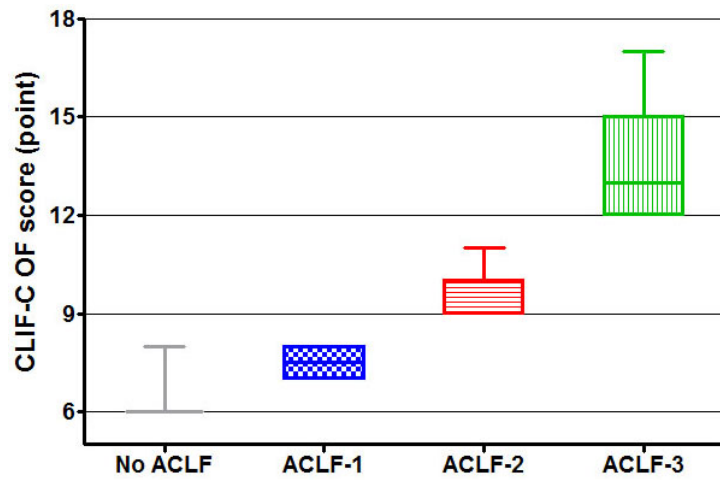


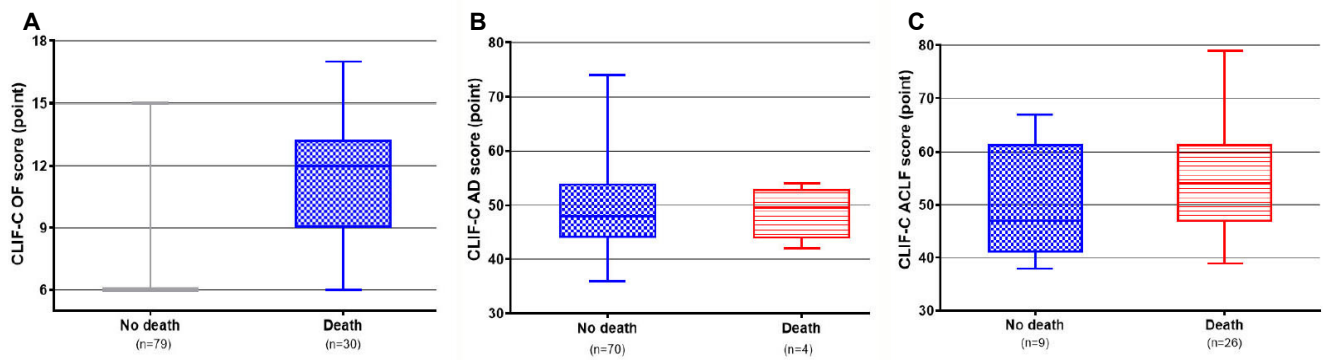
Supplementary Fig. 1. Mortality at 28 days and 90 days according to grades of ACLF. ACLF, acute-on-chronic liver failure.



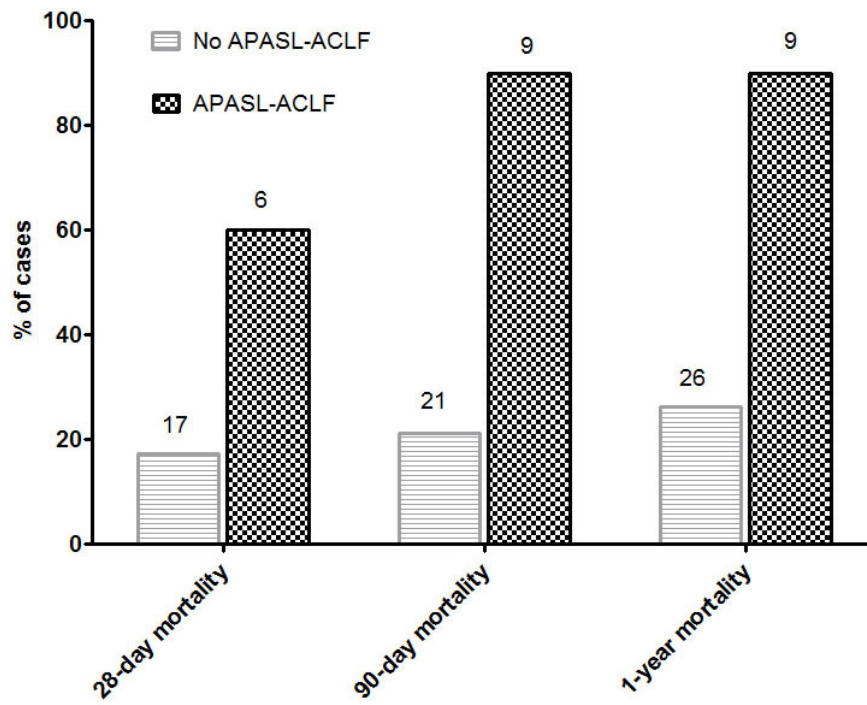
Supplementary Fig. 2. Survival curves in patients with or without ACLF according to prior acute decompensation. ACLF, acute-on-chronic liver failure; AD, acute decompensation.



Supplementary Fig. 3. CLIF-C OF scores according to grades of ACLF. CLIF-C OF, chronic liver failure Consortium Organ Failure score; ACLF, acute-on-chronic liver failure.



Supplementary Fig. 4. Prognostic scores according to death. (A) CLIF-C OF scores in entire patients (n=109). (B) CLIF-C AD score in patients without ACLF (n=74). (C) CLIF-C ACLF score in patients with ACLF (n=35). CLIF-C OF, chronic liver failure Consortium Organ Failure score; ACLF, acute-on-chronic liver failure.



Supplementary Fig. 5. Mortality at 28 days and 90 days of patients with or without APASL-ACLF. APASL, Asian Pacific Association for the Study of the Liver; ACLF, acute-on-chronic liver failure.

Supplementary Table 1. Site of Bacterial Infection (n=109)

	No ACLF (n=74)	ACLF (n=35)	p-value
Bacterial infections	17 (23.0)	20 (57.1)	0.001
Site			
Spontaneous bacterial peritonitis	2 (11.8)	5 (25.0)	0.416
Pneumonia	3 (17.6)	5 (25.0)	0.701
Urinary tract infection	2 (11.8)	3 (15.0)	1.000
Skin infection	4 (23.5)	0 (0.0)	0.036
Colitis	3 (17.6)	0 (0.0)	0.088
Unproved	1 (5.9)	4 (20.0)	0.348
Other	2 (11.8)	3 (15.0)	1.000

Values are presented as number (%).

Supplementary Table 2. Main Causes of Death at 28 and 90 Days after Enrollment

Causes of death	Death at 28 days (n=23)	Death at 90 days (n=30)
Multiple organ failure without septic or hypovolemic shock	11 (47.8)	16 (53.3)
Septic shock	5 (21.7)	6 (20.0)
Hypovolemic shock	5 (21.7)	5 (16.7)
Cerebral hemorrhage	0 (0.0)	1 (3.3)
Other causes	1 (4.3)	1 (3.3)
Unknown causes	1 (4.3)	1 (3.3)

Values are presented as number (%).

Supplementary Table 3. Baseline Data at 3 Months Prior to Enrollment

Characteristics	Overall (n=39)	No ACLF (n=22)	ACLF (n=17)	p-value
Prognostic scores				
CTP	6.0 (5.0-8.0)	6.0 (5.0-7.0)	8.0 (6.0-10.0)	0.005
MELD	10.0 (8.0-16.0)	9.0 (7.0-11.0)	16.0 (8.5-20.0)	0.010
MELD-Na	10.0 (8.0-16.0)	9.0 (7.8-12.3)	15.0 (9.5-20.0)	0.013
CLIF-C OFs	6.0 (6.0-6.0)	6.0 (6.0-6.0)	6.0 (6.0-6.0)	0.705
CLIF-C ADs	43.0 (40.0-47.0)	42.0 (40.8-46.0)	45.0 (39.5-53.0)	0.362
Laboratory data				
WBC ($10 \times 10^9/L$)	3.9 (2.9-4.7)	3.8 (3.0-4.6)	3.9 (2.9-5.6)	0.457
Hemoglobin (g/dL)	12.0 (9.8-13.2)	12.3 (11.3-13.4)	10.6 (8.5-12.9)	0.045
Platelet ($\times 10^9/L$)	82.0 (54.0-111.0)	81.5 (54.0-117.3)	82.0 (52.5-103.0)	0.747
Bilirubin (mg/dL)	1.2 (0.6-2.4)	1.0 (0.6-1.6)	2.4 (0.8-3.8)	0.025
AST (U/L)	52.0 (38.0-70.0)	57.5 (38.8-70.0)	43.0 (37.0-75.0)	0.475
ALT (U/L)	30.0 (17.0-50.0)	31.0 (23.0-54.0)	20.0 (15.5-43.5)	0.377
Albumin (g/dL)	3.4 (2.6-3.8)	3.5 (3.0-3.8)	3.0 (2.5-3.9)	0.163
Creatinine (mg/dL)	0.76 (0.66-0.93)	0.70 (0.60-0.81)	0.83 (0.74-1.14)	0.009
Sodium (mmol/L)	139.2 (137.1-141.1)	139.6 (137.5-142.4)	138.4 (136.7-140.1)	0.255
PT-INR	1.19 (1.11-1.49)	1.17 (1.10-1.32)	1.35 (1.13-1.85)	0.034

Values are presented as the median (interquartile range) for continuous data.