

**Supplementary Table 1.** The Incidence of Metachronous Advanced Neoplasia according to the Number of Non-advanced Colorectal Adenoma

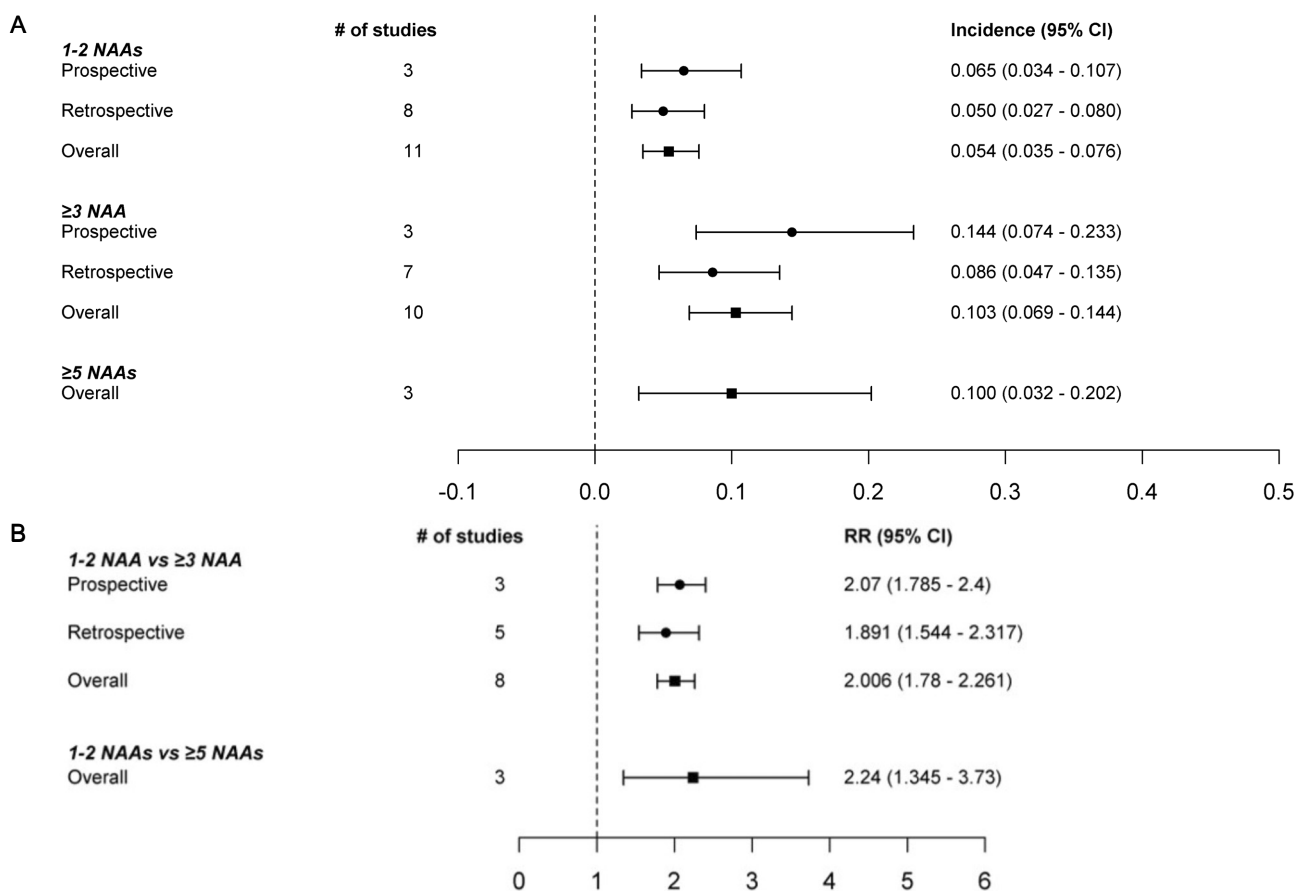
	N	RR	95% CI lower	95% CI upper	p-value	$I^2$	p-value (Q)
<b>≥3 NAAs vs. 1-2 NAAs</b>							
Prospective	3	2.070	1.785	2.400	<0.001	0.000	0.527
Retrospective	5	1.891	1.544	2.317	<0.001	0.000	0.648
Overall	8	2.006	1.780	2.261	<0.001	0.000	0.750
<b>3-4 NAAs vs. 1-2 NAAs</b>							
Retrospective	3	1.264	1.053	1.518	0.012	0.000	0.676
<b>≥5 NAAs vs. 1-2 NAAs</b>							
Retrospective	3	2.240	1.345	3.730	0.002	0.622	0.071
<b>≥5 NAAs vs. 3-4 NAAs</b>							
Retrospective	3	1.962	0.972	3.958	0.060	0.680	0.044

RR, relative risk; CI, confidence interval; NAA, non-advanced adenoma.

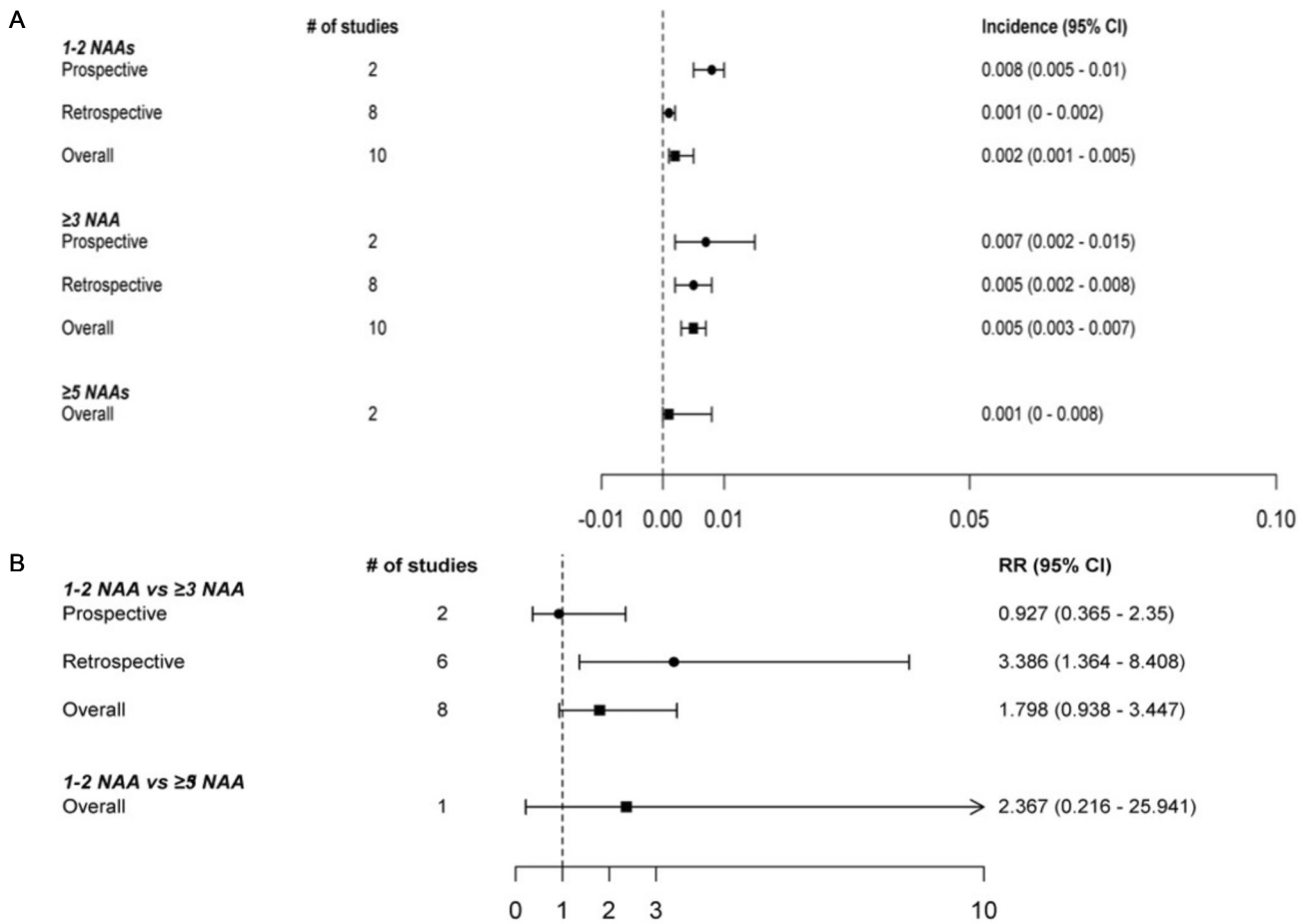
**Supplementary Table 2.** The RR of Metachronous Advanced Neoplasia according to the Number of Non-advanced Colorectal Adenoma

	N	RR	95% CI lower	95% CI upper	p-value	<i>I</i> <sup>2</sup>	p-value (Q)
<b>≥3 NAAs vs. 1-2 NAAs</b>							
Prospective	2	0.927	0.365	2.350	0.872	0.000	0.903
Retrospective	6	3.386	1.364	8.408	0.009	0.000	0.820
Overall	8	1.798	0.938	3.447	0.077	0.000	0.536
<b>≥3-4 NAAs vs. 1-2 NAAs</b>							
Retrospective	2	2.663	0.391	18.128	0.317	0.000	0.373
<b>≥5 NAAs vs. 1-2 NAAs</b>							
Retrospective	1	2.367	0.216	25.941	0.481		
<b>≥5 NAAs vs. 3-4 NAAs</b>							
Retrospective	2	1.148	0.142	9.290	0.897	0.000	0.670

RR, relative risk; CI, confidence interval; NAA, non-advanced adenoma.



Supplementary Fig. 1. (A, B) The incidence and relative risk of metachronous colorectal advanced neoplasia in the meta-analysis.



Supplementary Fig. 2. (A, B) The incidence and relative risk of metachronous colorectal cancer in the meta-analysis.