

## Original Article



## OPEN ACCESS

**Received:** Jul 4, 2017

**Revised:** Oct 31, 2017

**Accepted:** Oct 31, 2017

### Correspondence to

#### Chao-Hsiun Tang

School of Health Care Administration, Taipei Medical University, No. 250, Wuxing Street, Xinyi District, Taipei 110, Taiwan.  
E-mail: chtang@tmu.edu.tw

#### Wen-Fang Cheng




Department of Obstetrics and Gynecology, College of Medicine, National Taiwan University, No.1, Section 4, Roosevelt Road, Taipei 10617, Taiwan.  
E-mail: wenfangcheng@yahoo.com

\*Chien-An Chen and Chun-Ju Chiang contributed equally to this work.

**Copyright** © 2018. Asian Society of Gynecologic Oncology, Korean Society of Gynecologic Oncology

This is an Open Access article distributed under the terms of the Creative Commons Attribution Non-Commercial License (<https://creativecommons.org/licenses/by-nc/4.0/>) which permits unrestricted non-commercial use, distribution, and reproduction in any medium, provided the original work is properly cited.

### ORCID iDs

Chien-An Chen   
<https://orcid.org/0000-0002-2781-2207>  
Chun-Ju Chiang   
<https://orcid.org/0000-0002-1330-5319>  
Yun-Yuan Chen   
<https://orcid.org/0000-0002-7583-3790>  
San-Lin You   
<https://orcid.org/0000-0002-3192-3356>

<https://ejgo.org>

# Survival benefit of patients with early-stage ovarian carcinoma treated with paclitaxel chemotherapeutic regimens

Chien-An Chen <sup>1,\*</sup> Chun-Ju Chiang <sup>2,3,\*</sup> Yun-Yuan Chen <sup>4,5</sup> San-Lin You <sup>6</sup>  
Shu-Feng Hsieh <sup>5</sup> Chao-Hsiun Tang <sup>1</sup> Wen-Fang Cheng <sup>5,7,8</sup>

<sup>1</sup>School of Health Care Administration, Taipei Medical University, Taipei, Taiwan

<sup>2</sup>Graduate Institute of Epidemiology and Preventive Medicine, College of Public Health, National Taiwan University, Taipei, Taiwan

<sup>3</sup>Taiwan Cancer Registry, Taipei, Taiwan

<sup>4</sup>Taiwan Blood Services Foundation, Taipei, Taiwan

<sup>5</sup>Department of Obstetrics and Gynecology, College of Medicine, National Taiwan University, Taipei, Taiwan

<sup>6</sup>School of Medicine, College of Medicine and Big Data Research Centre, Fu-Jen Catholic University, New Taipei City, Taiwan

<sup>7</sup>Graduate Institute of Clinical Medicine, College of Medicine, National Taiwan University, Taipei, Taiwan

<sup>8</sup>Graduate Institute of Oncology, College of Medicine, National Taiwan University, Taipei, Taiwan

## ABSTRACT

**Objective:** Adjuvant chemotherapy was introduced in patients with early-stage ovarian cancer (OC). The benefit of standard chemotherapeutic regimens including taxane has not been established.

**Methods:** Patients with early-stage OC from the National Health Insurance Research database of Taiwan who received platinum plus cyclophosphamide (CP) or platinum plus paclitaxel (PT) for 3–6 cycles were recruited, and the disease-free survival (DFS) and overall survival (OS) were determined.

**Results:** A total of 1,510 early-stage OC patients, including 841 who received CP regimen and 699 who received PT regimen, were included. The 2 groups had a similar estimated probability of 5-year DFS (PT vs. CP, 79.0% vs. 77.6%;  $p=0.410$ ) and OS (84.6% vs. 84.3%;  $p=0.691$ ). Patients >50 years of age who received the CP regimen had a lower 5-year DFS than the patients ≤50 years of age who received the CP ( $p<0.001$ ) or PT regimens ( $p=0.001$ ). Additionally, patients >50 years of age who received the CP regimen had a worse 5-year OS compared with the other 3 groups ( $p=0.019$ ) ( $p=0.179$  for patients >50 years of age in the PT group;  $p=0.002$  for patients ≤50 years of age in the CP group; and  $p=0.061$  for patients ≤50 years of age in the PT group). Patients with the CP or PT regimen for 3–5 cycles had a similar 5-year DFS and OS compared to 6 cycles ( $p>0.050$ ).

**Conclusion:** Chemotherapeutic regimens with taxane could be recommended for early-stage OC patients >50 years of age.

**Keywords:** Ovarian Neoplasms; Drug Therapy; Taxane; Disease-Free Survival; Survival

## INTRODUCTION

Epithelial ovarian carcinoma (EOC) has the highest mortality rate among gynecologic malignancies [1]. Early diagnosis of ovarian cancer (OC) is difficult due to the lack of initial symptoms. Thus, OC patients are usually diagnosed at an advanced stage. Nevertheless,

Shu-Feng Hsieh 
<https://orcid.org/0000-0003-2035-5231>

 Chao-Hsiun Tang 
<https://orcid.org/0000-0003-0545-1567>

 Wen-Fang Cheng 
<https://orcid.org/0000-0002-3282-6304>

### Conflict of Interest

No potential conflict of interest relevant to this article was reported.

### Author Contributions

Conceptualization: T.C.H., C.W.F.; Data curation: C.C.A., C.C.J., C.Y.Y.; Investigation: C.C.A., C.C.J., C.Y.Y., Y.S.L., H.S.F., T.C.H., C.W.F.; Writing - original draft: C.C.A., C.C.J., C.Y.Y., T.C.H., C.W.F.

approximately 30% of patients present with early-stage disease (International Federation of Gynecology and Obstetrics [FIGO] stages I and II). Such early-stage patients are amenable to complete surgical resection [2]. For patients with stage IA or IB disease and favorable histology, adjuvant therapy is considered unnecessary when thorough surgical staging and histologic confirmation have been performed [3]. In contrast, other patients with early-stage EOC (stage IA or IB and unfavorable histology, including grade 3 or clear cell, stage IC, or stage II) are candidates for adjuvant treatment based upon significant 5-year recurrence rates of 25%–45% [2,4–6].

The optimal adjuvant chemotherapy for high risk group of early-stage EOC patients has been evaluated. Early experience in the Gynecologic Oncology Group (GOG) showed that such patients treated with either intraperitoneal phosphorus-32 or oral melphalan had similar survival rates [3,7]. Cisplatin in stage IC EOC significantly reduced the relapse rate by 61% [8]. Adjuvant platinum-based chemotherapy is of benefit in early-stage OC [9–11]. Cisplatin or carboplatin in combination with paclitaxel has emerged a standard first-line treatment for advanced OC [12–15].

There have been no studies to determine whether or not a platinum plus paclitaxel (PT) regimen yields a better response and outcome than a platinum plus non-paclitaxel regimen in early-stage OC by clinical trials. Besides, there is a debate about the optimal duration of chemotherapy in early-stage EOC. Six cycles of carboplatin and paclitaxel as compared with 3 cycles, did not significantly alter the recurrence rate, but were associated with more toxicity [2]; however, methodologic concerns have led to continued debate about the optimal duration of chemotherapy [16,17].

The adjuvant chemotherapeutic regimens of early-stage OC are either platinum plus cyclophosphamide (CP) or PT in Taiwan. The CP regimen could be reimbursed by the national health insurance. Whereas, patients needed to pay by themselves for PT regimen. Given the controversy surrounding the adjuvant chemotherapeutic regimen and number of cycles in patients with early-stage OC, we conducted a population-based analysis to determine if PT regimen yielded better responses and outcomes than a CP regimen. We specifically evaluated adherence to guideline-based recommendations for the administration of adjuvant chemotherapy and analyzed the influence of the duration of chemotherapy on the survival of high-risk patients with early-stage OC.

## MATERIALS AND METHODS

### 1. Study design

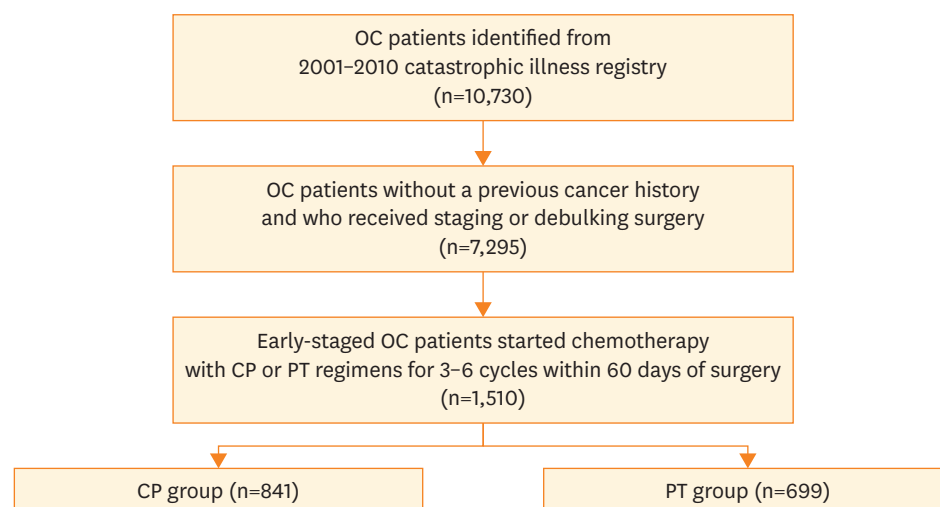
This study was approved by the Research Ethics Committee at the National Taiwan University Hospital (NTUH) and is registered in the ClinicalTrials.gov Protocol Registration System (Identifier: NCT01015079). The current retrospective cohort study compared the disease-free survival (DFS) and overall survival (OS) of 2 major regimens of adjuvant chemotherapy after staging surgery of OC patients recommended by the clinical guidelines of gynecologic oncologists in Taiwan, including platinum-analogues combined with cyclophosphamide (CP group) and platinum-analogues combined with paclitaxel (PT group) for 3–6 cycles. The staging surgery included unilateral salpingo-oophorectomy and/or hysterectomy, infracolic omentectomy, and pelvic lymph node sampling or dissection. This study was conducted through computerized linkages with several national databases in the National Health

Insurance Research (NHIR) database which contain information regarding demographic characteristics and diagnosis, inpatient and outpatient medical order files, the catastrophic illness registry, and the death certificate registry. The National Health Insurance (NHI) in Taiwan was implemented in 1995 and covers 90%–98% of the population [18] with a comprehensive benefits package, including inpatient and outpatient services. The NHI further provides co-payment reimbursement to patients with catastrophic illnesses, which includes OC. The stages of OC were according to the FIGO staging system [19]. Stages I and II were defined as early stage. Early-stage OC account for 40%–50% of all OC patients, and 65%–70% have received chemotherapy following staging surgery in Taiwan [20]. The NHIR database and this database for cancer with encrypted identification was obtained from and authorized to use by the National Health Research Institutes in Taiwan.

## 2. Study population

OC patients diagnosed between 1 January 2000 and 31 December 2011 without a history of cancer were identified from the catastrophic illness registry. To identify the patients with early-stage OC (stage I or II), those who underwent debulking surgery (stage III or IV) or staging surgery without adjuvant chemotherapy (stage IA or IB with grade 1), those who received chemotherapy followed by staging or debulking surgery, or those who received paclitaxel-containing regimens reimbursed by the NHI (stage III or IV) were excluded. For a better comparison between the CP and PT groups, those who received the first cycle of chemotherapy >60 days after surgery or the interval of each chemotherapy cycle was >45 days, those who received <3 or >6 cycles of chemotherapy (considered as persistent disease), those who changed the chemotherapeutic regimens within 6 cycles, or those who have undergone radiation after the diagnosis of OC were also excluded from this study. The study flow chart is shown in **Fig. 1**.

Because the NHI only reimburses platinum analogues combined with cyclophosphamide as adjuvant chemotherapeutic regimens for patients with early-stage OC, those who satisfied the abovementioned criteria and received platinum analogues combined with cyclophosphamide were defined as the CP group. For the PT group, although the NHI did not reimburse paclitaxel, the NHI reimbursed for platinum analogues, H2 blockers, and other anti-histamine-related drugs to prevent adverse effects, such as anaphylactic shock, induced



**Fig. 1.** Flow chart comparing the chemotherapeutic regimens used for patients with early-stage OC. CP, platinum plus cyclophosphamide; OC, ovarian cancer; PT, platinum plus paclitaxel.

by paclitaxel during a chemotherapy course. It is feasible to retrieve the PT group from the NHIR database when the orders of eligible patients included only platinum analogues as chemotherapeutic drugs with concurrent use of H2 blockers or anti-histamine.

### 3. Statistical analysis

The frequency of characteristics in the CP and PT groups, including age, wage income, residency, and Charlson co-morbidity index, were retrieved from the NHIR database and compared using a  $\chi^2$  test to identify possible confounding factors. The number of cycles of the adjuvant chemotherapy course was calculated based on the orders registered in the inpatient and outpatient medical order files. The main outcomes evaluated in this study were recurrence and death. If a new course of chemotherapy at least 1 month after the completion of adjuvant chemotherapy and the following cytotoxic drug, such as paclitaxel, topotecan, liposomal doxorubicin or gemcitabine reimbursed by the NHI, was introduced to the patient, a recurrence was considered to have occurred. The follow-up period for DFS in each patient was calculated from the end of chemotherapy course to the date a new course was initiated. Death ascertainment was retrieved from the death certificate, and the follow-up period for OS was calculated from the end of the chemotherapy course to the date of death. The DFS and OS in different groups were estimated using the Kaplan-Meier method, and the differences in survival curves between the regimens were tested by the log-rank test.

For comparing the effectiveness of CP and PT chemotherapy, hazard ratios (HRs) in different regimens adjusted by confounding factors and the 95% confidence intervals (CIs) were estimated using Cox proportional hazards models.

To assess the degree of overfitting or optimism, a non-parametric bootstrap resampling method was performed by forming 1,000 bootstrap samples of the CP and PT groups of equal size with replacement. Cox proportional regression analyses were estimated and the 95% CIs of the adjusted hazard ratios (aHRs) were calculated. All statistical analyses were performed in SAS version 9.3 (SAS Institute, Cary, NC, USA).

## RESULTS

### 1. Characteristics of the patients

A total of 1,510 early-stage OC patients, including 841 who received CP group and 699 who received PT group were included in this study (**Fig. 1**). The basic characteristics of the 1,510 patients are shown in **Table 1**. The PT group had a significantly higher insured wage income, urban residence, and received more cycles of chemotherapy than the CP group. The average follow-up period of all patients was 4.60 years (range, 4.46–4.74 years), and 5.17 years for the CP group (range, 4.98–5.37 years) and 3.88 years for the PT group (range, 3.70–4.05 years), respectively.

### 2. Patients receiving PT regimen had similar DFS and OS compared with patients receiving CP regimen

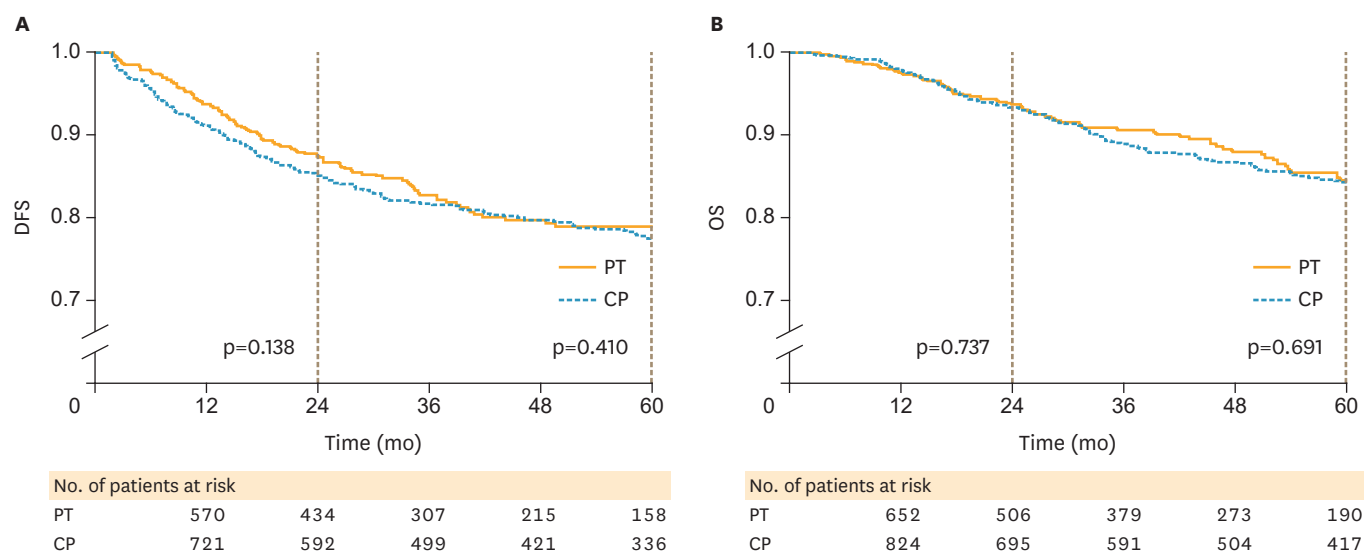
The DFS and OS of the 1,510 patients analyzed by the Kaplan-Meier method are shown in **Fig. 2**. The PT group had a similar estimated probability of 5-year (PT vs. CP, 79.0% vs. 77.6%;  $p=0.410$ ) DFS compared with the CP group (**Fig. 2A**). The estimated probability of 5-year OS was 84.3% in the CP group and 84.6% in the PT group, respectively (**Fig. 2B**). The 5-year ( $p=0.691$ ) OS did not differ significantly between the CP and PT groups, either.

## Paclitaxel chemotherapy in early-stage ovarian cancer

**Table 1.** Characteristics of study population by chemotherapeutic regimens

Characteristics	CP group (n=841)		PT group (n=669)		p-value
	No.	%	No.	%	
Age					
Mean (SD)	49.48 (11.77)		49.35 (10.85)		0.827
≤40	155	18.43	123	18.39	1.000
41–50	285	33.89	227	33.93	-
>50	401	47.68	319	47.68	-
Insured wage income (NTD)					<0.001
≤20,000	199	23.66	116	17.34	
20,001–30,000	283	33.65	224	33.48	
30,001–50,000	129	15.34	140	20.93	
≥50,001	23	2.73	46	6.88	
Fixed premium	207	24.61	143	21.38	
Residency					0.002
Urban	649	77.2	578	86.4	
Rural	192	22.9	91	13.6	
Charlson comorbidity index					0.278
≥1	51	6.06	32	4.78	
0	790	93.94	637	95.22	
No. of regimen cycles					<0.001
3	114	13.56	47	7.03	
4	156	18.55	113	16.89	
5	71	8.44	60	8.97	
6	500	59.45	449	67.12	

CP, platinum plus cyclophosphamide; NTD, New Taiwan Dollars; PT, platinum plus paclitaxel; SD, standard deviation.



**Fig. 2.** Survival curves in patients with early-stage OC who received CP or PT chemotherapeutic regimens. (A) DFS (CP vs. PT groups of 2-year DFS: 85.12% vs. 87.59%,  $p=0.138$ ; 5-year DFS: 77.56% vs. 79.03%,  $p=0.410$ ) and (B) OS (CP vs. PT groups of 2-year OS: 93.31% vs. 93.81%,  $p=0.737$ ; 5-year OS: 84.26% vs. 84.56%,  $p=0.691$ ). CP, platinum plus cyclophosphamide; DFS, disease-free survival; OC, ovarian cancer; OS, overall survival; PT, platinum plus paclitaxel.

### 3. Different cycle numbers of CP or PT chemotherapeutic regimens had similar DFS and OS

The multivariate Cox model showed that patients receiving 6 cycles of CP, 3–5 cycles of PT, or 6 cycles of PT did not have lower HRs of 2- or 5-year DFS or OS when using 3–5 cycles of CP group as the reference (Table 2). There was no significant difference in the 2- or 5-year DFS or OS between the 4 groups, either.

**Table 2.** Multivariate Cox model for early-stage OC patients with different chemotherapeutic regimens and number of cycles

Regimen (No. of cycles)	2-yr survival			5-yr survival		
	aHR*	95% CI	p	aHR*	95% CI	p
<b>DFS</b>						
CP (3–5)	1.00	Reference		1.00	Reference	
CP (6)	1.02	0.70–1.47	0.936	1.05	0.77–1.43	0.774
PT (3–5)	0.83	0.51–1.34	0.440	0.92	0.61–1.39	0.683
PT (6)	0.80	0.54–1.20	0.282	0.93	0.67–1.30	0.682
<b>OS</b>						
CP (3–5)	1.00	Reference		1.00	Reference	
CP (6)	0.99	0.58–1.71	0.973	1.25	0.85–1.83	0.260
PT (3–5)	1.32	0.71–2.46	0.387	1.27	0.78–2.05	0.332
PT (6)	0.74	0.41–1.34	0.322	0.99	0.64–1.51	0.944

aHR, adjusted hazard ratio; CI, confidence interval; CP, platinum plus cyclophosphamide; DFS, disease-free survival; HR, hazard ratio; OC, ovarian cancer; OS, overall survival; PT, platinum plus paclitaxel.

\*HR was adjusted for age, insured wage income, residency, and Charlson comorbidity index.

#### 4. Patients >50 years of age receiving 6 cycles of the PT regimens had significantly longer 2-year DFS than patients receiving 3–5 cycles of the CP regimen

Patients ≤50 years of age had similar HRs in the 5-year DFS or OS, regardless of the number of cycles or chemotherapeutic regimens (**Table 3**). However, patients >50 years of age receiving 6 cycles of a PT regimen had a significantly lower aHR than patients receiving 3–5 cycles of a CP regimen (aHR=0.53; 95% CI=0.29–0.96; p=0.035) in the 2-year DFS (**Table 3**).

#### 5. Patients >50 years of age treated with a CP regimen had a shorter 5-year DFS and OS than the other groups

We first evaluated the 5-year DFS and OS of patients younger and older than 50 years. Patients ≤50 years old had significantly better 5-year DFS (p<0.001; **Fig. 3A**) and OS (p=0.008; **Fig. 3B**) than those >50 years old.

**Table 3.** Multivariate Cox model for early-stage OC patients stratified by age group with different chemotherapeutic regimens and number of cycles

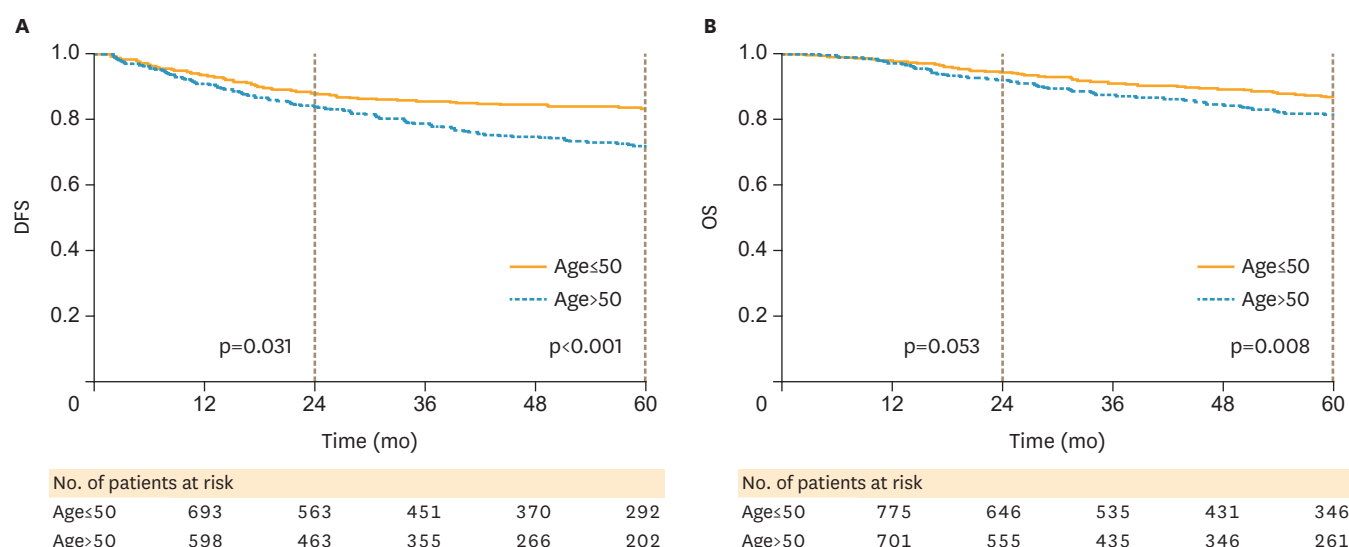
Survival	Regimen (No. of cycles)	Age≤50 (n=790)			Age>50 (n=720)		
		aHR*	95% CI	p	aHR*	95% CI	p
2-yr DFS	CP (3–5)	1.00	Reference		1.00	Reference	
	CP (6)	1.25	0.69–2.26	0.464	0.68	0.41–1.14	0.140
	PT (3–5)	1.08	0.52–2.25	0.830	0.60	0.29–1.21	0.152
	PT (6)	1.16	0.61–2.22	0.655	0.53	0.29–0.96	0.035
5-yr DFS	CP (3–5)	1.00	Reference		1.00	Reference	
	CP (6)	1.02	0.61–1.72	0.934	0.86	0.56–1.33	0.505
	PT (3–5)	0.99	0.53–1.86	0.975	0.77	0.43–1.38	0.379
	PT (6)	1.08	0.61–1.90	0.794	0.77	0.47–1.25	0.291
2-yr OS	CP (3–5)	1.00	Reference		1.00	Reference	
	CP (6)	0.71	0.30–1.71	0.446	1.00	0.47–2.15	0.997
	PT (3–5)	1.06	0.40–2.79	0.907	1.37	0.56–3.36	0.491
	PT (6)	0.69	0.27–1.76	0.442	0.80	0.32–1.96	0.620
5-yr OS	CP (3–5)	1.00	Reference		1.00	Reference	
	CP (6)	0.96	0.51–1.81	0.902	1.30	0.75–2.25	0.353
	PT (3–5)	1.22	0.59–2.53	0.588	1.30	0.64–2.64	0.473
	PT (6)	1.23	0.64–2.39	0.536	0.88	0.45–1.71	0.704

HR with p-value <0.05 were in bold face.

aHR, adjusted hazard ratio; CI, confidence interval; CP, platinum plus cyclophosphamide; DFS, disease-free survival; HR, hazard ratio; OC, ovarian cancer; OS, overall survival; PT, platinum plus paclitaxel.

\*HR was adjusted for insured wage income, residency, and Charlson comorbidity index.





**Fig. 3.** Survival curves in patients with early-stage OC by age. (A) DFS by age group (≤50 vs. >50 years of 2-year DFS: 88.06% vs. 84.15%,  $p=0.031$ ; 5-year DFS: 83.48% vs. 71.97%,  $p<0.001$ ), (B) OS (≤50 vs. >50 years of 2-year OS: 94.71% vs. 92.20%,  $p=0.053$ ; 5-year OS: 87.06% vs. 81.50%,  $p=0.008$ ). DFS, disease-free survival; OC, ovarian cancer; OS, overall survival.

The influence of chemotherapeutic regimens was further evaluated. The estimated 2- and 5-year DFS among the 4 groups as a function of age (≤50 or >50 years) and chemo-regimens (CP or PT) were significantly different ( $p=0.032$  for 2 years;  $p<0.001$  for 5 years; **Fig. 4A**). Patients >50 years of age receiving CP regimens had a lower 5-year DFS than patients ≤50 years of age with CP ( $p<0.001$ ) or PT regimens ( $p=0.001$ ). Additionally, patients >50 years of age had a significantly shorter 5-year DFS than patients ≤50 years of age in the CP group (70.49% vs. 83.70%;  $p<0.001$ ), but not in the PT group (73.35% vs. 82.92%;  $p=0.063$ ).

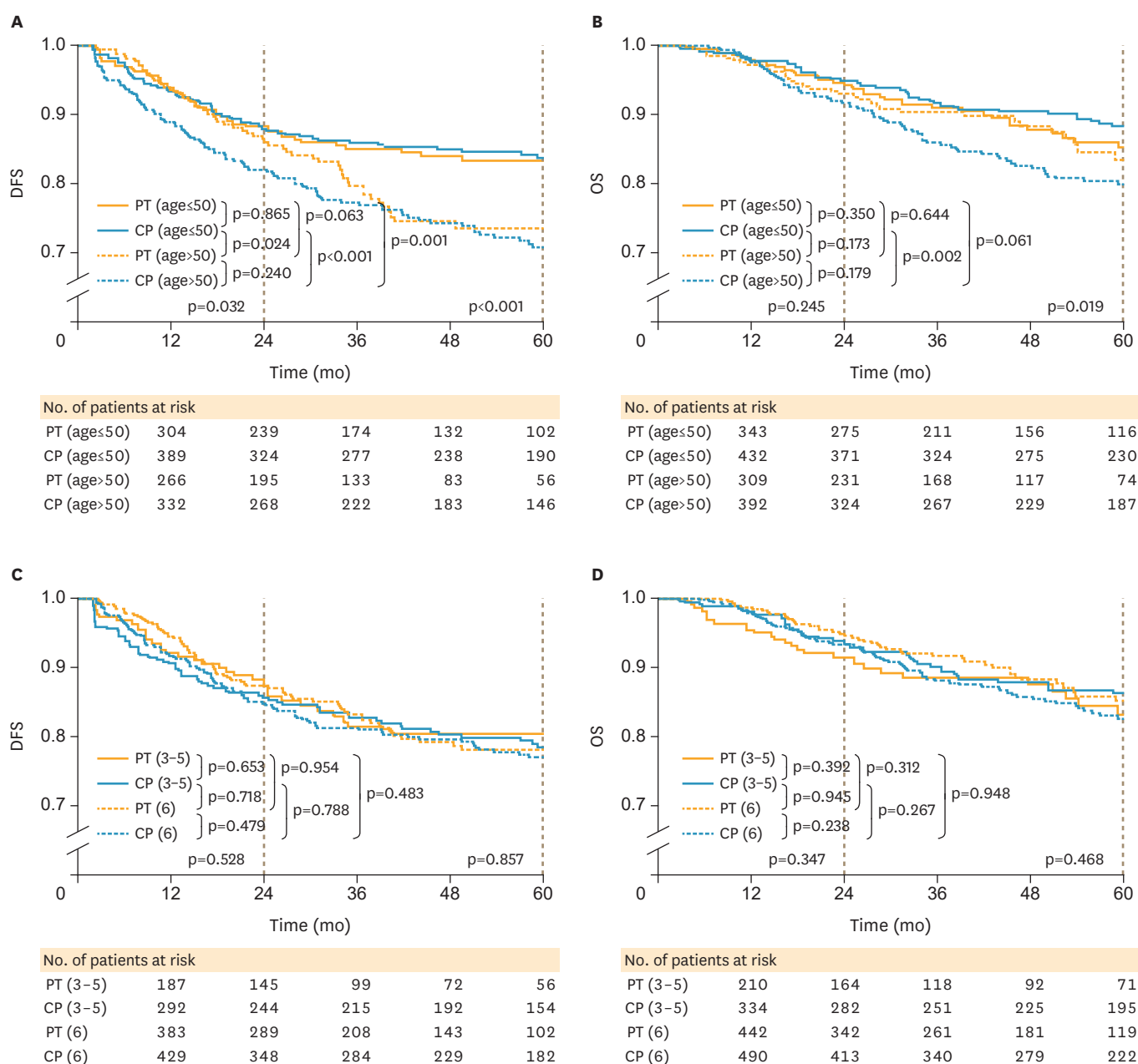
The estimated 5-year OS among the 4 groups categorized by age (≤50 or >50 years) and chemo-regimens (CP or PT) were significantly different ( $p=0.029$ ; **Fig. 4B**). Patients >50 years of age who received the CP regimen had the worse 5-year OS compared with the other 3 groups ( $p=0.179$  for patients >50 years of age in the PT group;  $p=0.002$  for patients ≤50 years of age in the CP group;  $p=0.061$  for patients ≤50 years of age in the PT group; **Fig. 4B**). Additionally, when comparing the 2 age groups, patients >50 years of age had a significantly shorter 5-year OS than those ≤50 years of age in the CP group (79.83% vs. 88.26%;  $p=0.002$ ), but not in the PT group (83.81% vs. 85.29%;  $p=0.644$ ). Patients ≤50 years of age had a similar 5-year OS whether treated with the CP or PT regimen ( $p=0.350$ ). A similar phenomenon was also observed in patients >50 years of age ( $p=0.179$ ).

## 6. The outcome of early-stage OC patients treated in different periods was similar

We then evaluated if treatment period would influence the outcome of early stage OC patients. As shown in **Supplementary Table 1**, patients treated during 2000–2005 had longer 5-year DFS than those treated during 2006–2010. However, the 5-year OS of the patients was no difference between 2000–2005 and 2006–2010.

## 7. The cycle number of the 2 chemotherapeutic regimens had similar 5-year DFS or OS in patients with early-stage OC

The patients were further divided by age (≤50 vs. >50 years of age) for the following analysis. As shown in **Table 3**, among patients ≤50 years of age, no significant differences



**Fig. 4.** Survival curves in patients with early-stage OC receiving CP or PT chemotherapeutic regimens grouped by age and number of chemotherapeutic cycles. (A) DFS by age group (5-year DFS: patients ≤50 years of age treated with CP regimen, 83.70%; patients >50 years of age treated with CP regimen, 70.49%; patients ≤50 years of age treated with PT regimen, 82.92%; patients >50 years of age treated with PT regimen, 73.35%), (B) OS by age group (5-year OS: patients ≤50 years of age treated with CP regimen, 88.26%; patients >50 years of age treated with CP regimen, 79.83%; patients ≤50 years of age treated with PT regimen, 85.29%; patients >50 years of age treated with PT regimen, 83.81%), (C) DFS by number of chemotherapy cycles in all of the patients with early-stage OC (5-year DFS: 3–5 cycles of CP [78.36%], 6 cycles of CP [76.99%], 3–5 cycles of PT [80.43%], 6 cycles of PT [78.29%]), and (D) OS by number of chemotherapy cycles in all of the patients with early-stage OC (5-year OS: 3–5 cycles of CP [86.30%], 6 cycles of CP [82.69%], 3–5 cycles of PT [83.30%], 6 cycles of PT [85.18%]). CP, platinum plus cyclophosphamide; DFS, disease-free survival; OC, ovarian cancer; OS, overall survival; PT, platinum plus paclitaxel.

existed in the 2 chemo-regimen groups with respect to 5-year DFS or OS whether 3–5 or 6 chemotherapy cycles were administered. Among patients >50 years of age in the CP group using 3–5 cycles as the reference group, the aHRs for the 5-year DFS (**Fig. 4C**) or OS (**Fig. 4D**) were not significantly different in women >50 years of age who received 3–5 or 6 cycles of either chemotherapeutic regimen.



**Table 4.** DFS and OS in early-staged OC patients treated with 2 different chemotherapeutic regimens before and after bootstrapping

Survival	Regimen	Before bootstrapping		After bootstrapping		p
		aHR*	95% CI	aHR*	95% CI	
2-yr DFS	PC	1.00	Reference	1.00	Reference	Non-significant
	PT	0.84	0.62–1.15	0.84	0.61–1.12	
5-yr DFS	PC	1.00	Reference	1.00	Reference	Non-significant
	PT	0.92	0.71–1.20	0.92	0.70–1.19	
2-yr OS	PC	1.00	Reference	1.00	Reference	Non-significant
	PT	1.04	0.67–1.62	1.06	0.67–1.60	
5-yr OS	PC	1.00	Reference	1.00	Reference	Non-significant
	PT	1.05	0.76–1.44	1.06	0.75–1.48	

p-values are the comparisons of 95% CI between before and after bootstrapping.

aHR, adjusted hazard ratio; CI, confidence interval; CP, platinum plus cyclophosphamide; DFS, disease-free survival; HR, hazard ratio; PT, platinum plus paclitaxel; OC, ovarian cancer; OS, overall survival.

\*HR was adjusted for age, insured wage income, residency, and Charlson comorbidity index.

We further performed bootstrapping to determine if the results of DFS and OS in patients who received the 2 chemotherapeutic regimens were reliable. **Table 4** shows the 2- and 5-year DFS and OS in patients with early-stage OC treated with 2 different chemotherapeutic regimens before and after bootstrapping. The aHRs of the 2- or 5-year DFS and OS for the patients who received the 2 chemotherapeutic regimens were not different.

## DISCUSSION

The optimal management of women with early-stage EOC is a matter of controversy. Since the 1980s, cisplatin-based combination therapy has been shown to be more effective than alkylating agents alone [21] or combinations without cisplatin [22,23]. Platinum-based adjuvant chemotherapy with PT has become a common chemotherapeutic regimen for patients with all stages of EOC since 1990s. However, there is no universally preferred platinum-based therapy among oncologists treating OC. The patients treated with paclitaxel had similar 5-year DFS and OS compared to patients treated with cyclophosphamide in this survey (**Fig. 2**) like Garcia-Saenz's results [24].

The number of cycles of adjuvant chemotherapy in patients with early-stage epithelial OC is another controversial issue. GOG 157 data identified subsets of patients who benefit from additional cycles of chemotherapy. Patients with serous tumors had a significantly decreased risk of recurrence with 6 compared to 3 cycles of chemotherapy (HR=0.33); however, grade 3 or 4 neurotoxicity was significantly increased from 2% to 11% in patients treated with 3 and 6 cycles of therapy, respectively [25]. Another GOG phase III trial comparing observation and weekly maintenance low-dose paclitaxel after 3 cycles of carboplatin and paclitaxel in patients with early-stage OC also showed similar 5-year OS; however, the extended weekly paclitaxel group had higher incidences of peripheral neuropathy, infection or fever, and dermatologic events [26]. Older women ( $\geq 50$  years) who received 6 cycles of platinum and paclitaxel had a significantly lower risk of recurrence than patients who received 3–5 cycles in this survey. The reasons why patients received different cycles (from 3–6) of chemotherapy include the adverse effects, physicians' recommendation, and patients' decision (such as economic issue).

Age of diagnosis is always an important prognostic factor for patients with EOCs. Young age itself is indeed an independent prognostic factor after adjusting for other well-known clinicopathologic prognostic factors for EOCs [27]. Younger patients with EOCs have better survival than older patients, a finding which has been confirmed in several large population-based studies [1,28-30]. Several possible explanations for the importance of age in EOC patient survival have been proposed, including performance status [31] and increased tolerance to intensive chemotherapeutic regimens [32,33]. Dinkelspiel et al. [34] reported that a higher percentage of older women with early-stage EOC did not receive adjuvant chemotherapy or received adjuvant chemotherapy for a short duration ( $\leq 3$  months) according to the Surveillance, Epidemiology, and End Results (SEER) data [33]. Our survey revealed that the 5-year DFS of young patients ( $< 50$  years) did not differ as a function of the chemotherapeutic regimen or number of cycles; however, older patients ( $\geq 50$  years) who received 3–5 cycles of platinum and cyclophosphamide had a significantly higher risk of recurrence than patients receiving 6 cycles of platinum and paclitaxel. Older patients with EOCs could benefit (i.e., lower the possibility of recurrence) by receiving paclitaxel regimen and additional cycles of chemotherapy. We hypothesized that older patients had different pharmacokinetics between cyclophosphamide and paclitaxel, and more cycles of paclitaxel could have higher possibility to kill more microscopic tumor cells.

Sub-optimal analysis of the survival results of patients with early-stage EOC is due to incomplete surgical staging and failure to identify prognostic factors. Between 20% and 25% of patients with early-stage EOC relapse, even with adjuvant cytotoxic therapy. The European Organisation for Research and Treatment of Cancer investigated the Adjuvant ChemoTherapy In Ovarian Neoplasm (ACTION) trial and identified that the extent of surgical staging may influence survival [11]. Specifically, patients with sub-optimal surgical staging had significantly worse recurrence-free survival and OS without receiving adjuvant chemotherapy [11]. In contrast, among patients with optimal surgical staging, there was no difference in recurrence-free survival or OS, with or without adjuvant chemotherapy [11]. GOG 157 showed that women with serous tumors had a significantly increased risk of recurrence with 3 cycles of chemotherapy [25]. However, Mannel et al. [26] were unable to replicate the difference in patients with serous tumors. The influence of other histologic types (mucinous, endometrioid, or clear cell) in early-stage OC needs further investigation. Indeed, a poor response of clear cell, mucinous, and low-grade tumors to standard carboplatin/paclitaxel therapy has been reported in multiple trials [35-37]. Future treatment trials targeting OC patients based on histologic findings are warranted. Recent genomic analyses indicate that histologic features and grade are better differentiators than stage in OCs [38-40]. High-grade serous tumors cluster together regardless of stage and appear different than low-grade serous tumors. Clear cell tumors of the ovary cluster with renal and endometrial/clear cell tumors rather than serous tumors of the ovary, thus suggesting a basic biologic difference which may impact response to therapy. It will be of value to determine if genomic analysis can be used to identify high- or low-risk patients with early-stage EOC who should receive adjuvant chemotherapy.

The strengths of the current study include the nationwide, population-based study design, including almost all patients with early-stage OC using the National Insurance System of Taiwan. With long-term follow-up, the survival status of these patients was documented by death certification, thus resulting in a large, reliable study cohort and robust results without potential selection biases. The shortcomings of this study included the lack of information detail regarding cancer staging, histologic type, histologic grade, and treatment-related morbidities which may have influenced the interpretation of the data. Another limitation of our study was a lack of central pathology. The discordance between different pathologists

with respect to site of origin or tumor histopathologic type may also have influenced the study results. Based on this nationwide population-based study, however, the large number of patients may still provide useful information. We believe that our findings still provide meaningful insight into the study of patients with early-stage OC with different chemotherapeutic regimens, which in turn warrant further studies.

The target patients in this study were recruited from the NHIR database and are similar to the real-world database. The same recruiting processes were tested in one medical institute (NTUH) as an internal validation. All of the 163 target patients in the NTUH were recruited from the recruiting processes (**Supplementary Fig. 1**). And there were 213 patients in the NTUH recruited from the NHIR database by recruiting processes (**Supplementary Fig. 2**). This internal validation demonstrated that the recruiting processes from the NHIR database are reliable.

In conclusion, early-stage OC patients had similar outcome, when receiving chemotherapeutic regimens with or without taxane. Chemotherapeutic regimens with taxane can improve the survival benefit of early-stage OC patients >50 years of age compared to regimens without taxane.

## ACKNOWLEDGMENTS

The authors express their sincere thanks to the National Health Insurance Administration of Taiwan for access to the National Health Insurance Research database.

## SUPPLEMENTARY MATERIALS

### Supplementary Table 1

Multivariate Cox model for early stage OC patients treated in different periods

[Click here to view](#)

### Supplementary Fig. 1

Study flow diagram of the number of patients from the NTUH by the recruiting process.

[Click here to view](#)

### Supplementary Fig. 2

Study flow diagram of the number of patients recruited from the NTUH using the NHIR database recruiting process.

[Click here to view](#)

## REFERENCES

1. Chiang YC, Chen CA, Chiang CJ, Hsu TH, Lin MC, You SL, et al. Trends in incidence and survival outcome of epithelial ovarian cancer: 30-year national population-based registry in Taiwan. *J Gynecol Oncol* 2013;24:342-51.

[PUBMED](#) | [CROSSREF](#)

2. Bell J, Brady MF, Young RC, Lage J, Walker JL, Look KY, et al. Randomized phase III trial of three versus six cycles of adjuvant carboplatin and paclitaxel in early stage epithelial ovarian carcinoma: a Gynecologic Oncology Group study. *Gynecol Oncol* 2006;102:432-9.  
[PUBMED](#) | [CROSSREF](#)
3. Young RC, Walton LA, Ellenberg SS, Homesley HD, Wilbanks GD, Decker DG, et al. Adjuvant therapy in stage I and stage II epithelial ovarian cancer. Results of two prospective randomized trials. *N Engl J Med* 1990;322:1021-7.  
[PUBMED](#) | [CROSSREF](#)
4. Vergote IB, Vergote-De Vos LN, Abeler VM, Aas M, Lindegaard MW, Kjørstad KE, et al. Randomized trial comparing cisplatin with radioactive phosphorus or whole-abdomen irradiation as adjuvant treatment of ovarian cancer. *Cancer* 1992;69:741-9.  
[PUBMED](#) | [CROSSREF](#)
5. Ahmed FY, Wiltshaw E, A'Hern RP, Nicol B, Shepherd J, Blake P, et al. Natural history and prognosis of untreated stage I epithelial ovarian carcinoma. *J Clin Oncol* 1996;14:2968-75.  
[PUBMED](#) | [CROSSREF](#)
6. Brugghe J, Baak JP, Wiltshaw E, Brinkhuis M, Meijer GA, Fisher C. Quantitative prognostic features in FIGO I ovarian cancer patients without postoperative treatment. *Gynecol Oncol* 1998;68:47-53.  
[PUBMED](#) | [CROSSREF](#)
7. Young RC, Brady MF, Nieberg RK, Long HJ, Mayer AR, Lentz SS, et al. Adjuvant treatment for early ovarian cancer: a randomized phase III trial of intraperitoneal 32P or intravenous cyclophosphamide and cisplatin--a Gynecologic Oncology Group study. *J Clin Oncol* 2003;21:4350-5.  
[PUBMED](#) | [CROSSREF](#)
8. Bolis G, Colombo N, Pecorelli S, Torri V, Marsoni S, Bonazzi C, et al. Adjuvant treatment for early epithelial ovarian cancer: results of two randomised clinical trials comparing cisplatin to no further treatment or chromic phosphate (32P). G.I.C.O.G.: Gruppo Interregionale Collaborativo in Ginecologia Oncologica. *Ann Oncol* 1995;6:887-93.  
[PUBMED](#) | [CROSSREF](#)
9. Trimbos JB, Vergote I, Bolis G, Vermorken JB, Mangioni C, Madronal C, et al. Impact of adjuvant chemotherapy and surgical staging in early-stage ovarian carcinoma: European Organisation for Research and Treatment of Cancer-Adjuvant ChemoTherapy in Ovarian Neoplasm trial. *J Natl Cancer Inst* 2003;95:113-25.  
[PUBMED](#) | [CROSSREF](#)
10. Colombo N, Guthrie D, Chiari S, Parmar M, Qian W, Swart AM, et al. International Collaborative Ovarian Neoplasm trial 1: a randomized trial of adjuvant chemotherapy in women with early-stage ovarian cancer. *J Natl Cancer Inst* 2003;95:125-32.  
[PUBMED](#) | [CROSSREF](#)
11. Trimbos JB, Parmar M, Vergote I, Guthrie D, Bolis G, Colombo N, et al. International Collaborative Ovarian Neoplasm trial 1 and Adjuvant ChemoTherapy In Ovarian Neoplasm trial: two parallel randomized phase III trials of adjuvant chemotherapy in patients with early-stage ovarian carcinoma. *J Natl Cancer Inst* 2003;95:105-12.  
[PUBMED](#) | [CROSSREF](#)
12. McGuire WP, Hoskins WJ, Brady MF, Kucera PR, Partridge EE, Look KY, et al. Cyclophosphamide and cisplatin compared with paclitaxel and cisplatin in patients with stage III and stage IV ovarian cancer. *N Engl J Med* 1996;334:1-6.  
[PUBMED](#) | [CROSSREF](#)
13. Piccart MJ, Bertelsen K, James K, Cassidy J, Mangioni C, Simonsen E, et al. Randomized intergroup trial of cisplatin-paclitaxel versus cisplatin-cyclophosphamide in women with advanced epithelial ovarian cancer: three-year results. *J Natl Cancer Inst* 2000;92:699-708.  
[PUBMED](#) | [CROSSREF](#)
14. Ozols RF, Bundy BN, Greer BE, Fowler JM, Clarke-Pearson D, Burger RA, et al. Phase III trial of carboplatin and paclitaxel compared with cisplatin and paclitaxel in patients with optimally resected stage III ovarian cancer: a Gynecologic Oncology Group study. *J Clin Oncol* 2003;21:3194-200.  
[PUBMED](#) | [CROSSREF](#)
15. Alberts DS, Green S, Hannigan EV, O'Toole R, Stock-Novack D, Anderson P, et al. Improved therapeutic index of carboplatin plus cyclophosphamide versus cisplatin plus cyclophosphamide: final report by the Southwest Oncology Group of a phase III randomized trial in stages III and IV ovarian cancer. *J Clin Oncol* 1992;10:706-17.  
[PUBMED](#) | [CROSSREF](#)
16. Chan JK, Tian C, Teoh D, Monk BJ, Herzog T, Kapp DS, et al. Survival after recurrence in early-stage high-risk epithelial ovarian cancer: a Gynecologic Oncology Group study. *Gynecol Oncol* 2010;116:307-11.  
[PUBMED](#) | [CROSSREF](#)

17. Kolomainen DF, A'Hern R, Coxon FY, Fisher C, King DM, Blake PR, et al. Can patients with relapsed, previously untreated, stage I epithelial ovarian cancer be successfully treated with salvage therapy? *J Clin Oncol* 2003;21:3113-8.  
[PUBMED](#) | [CROSSREF](#)
18. Ministry of Health and Welfare (TW). 2015 Taiwan health and welfare report [Internet]. Taipei: Ministry of Health and Welfare; Available from: [http://www.mohw.gov.tw/EN/Ministry/DM2\\_P.aspx?f\\_list\\_no=475&fod\\_list\\_no=5747&doc\\_no=53769&rn=1833648451](http://www.mohw.gov.tw/EN/Ministry/DM2_P.aspx?f_list_no=475&fod_list_no=5747&doc_no=53769&rn=1833648451).
19. Mutch DG, Prat J. 2014 FIGO staging for ovarian, fallopian tube and peritoneal cancer. *Gynecol Oncol* 2014;133:401-4.  
[PUBMED](#) | [CROSSREF](#)
20. Health Promotion Administration, Ministry of Health and Welfare (TW). Taiwan cancer registry annual report: 2009–2013. Taipei: Ministry of Health and Welfare; 2015.
21. Williams CJ, Mead GM, Macbeth FR, Thompson J, Whitehouse JM, MacDonald H, et al. Cisplatin combination chemotherapy versus chlorambucil in advanced ovarian carcinoma: mature results of a randomized trial. *J Clin Oncol* 1985;3:1455-62.  
[PUBMED](#) | [CROSSREF](#)
22. Neijt JP, ten Bokkel Huinink WW, van der Burg ME, van Oosterom AT, Vriesendorp R, Kooyman CD, et al. Randomised trial comparing two combination chemotherapy regimens (Hexa-CAF vs CHAP-5) in advanced ovarian carcinoma. *Lancet* 1984;2:594-600.  
[PUBMED](#) | [CROSSREF](#)
23. Omura G, Blessing JA, Ehrlich CE, Miller A, Yordan E, Creasman WT, et al. A randomized trial of cyclophosphamide and doxorubicin with or without cisplatin in advanced ovarian carcinoma. A Gynecologic Oncology Group study. *Cancer* 1986;57:1725-30.  
[PUBMED](#) | [CROSSREF](#)
24. García-Sáenz JA, Custodio A, Casado A, Vidart JA, Coronado PJ, Martín M, et al. Platinum-based adjuvant chemotherapy on moderate- and high-risk stage I and II epithelial ovarian cancer patients. Long-term single institution experience and literature review. *Clin Transl Oncol* 2011;13:121-32.  
[PUBMED](#) | [CROSSREF](#)
25. Chan JK, Tian C, Fleming GF, Monk BJ, Herzog TJ, Kapp DS, et al. The potential benefit of 6 vs. 3 cycles of chemotherapy in subsets of women with early-stage high-risk epithelial ovarian cancer: an exploratory analysis of a Gynecologic Oncology Group study. *Gynecol Oncol* 2010;116:301-6.  
[PUBMED](#) | [CROSSREF](#)
26. Mannel RS, Brady MF, Kohn EC, Hanjani P, Hiura M, Lee R, et al. A randomized phase III trial of IV carboplatin and paclitaxel × 3 courses followed by observation versus weekly maintenance low-dose paclitaxel in patients with early-stage ovarian carcinoma: a Gynecologic Oncology Group study. *Gynecol Oncol* 2011;122:89-94.  
[PUBMED](#) | [CROSSREF](#)
27. Chan JK, Loizzi V, Magistris A, Lin F, Rutgers J, Osann K, et al. Differences in prognostic molecular markers between women over and under 45 years of age with advanced ovarian cancer. *Clin Cancer Res* 2004;10:8538-43.  
[PUBMED](#) | [CROSSREF](#)
28. Chan JK, Cheung MK, Husain A, Teng NN, West D, Whitemore AS, et al. Patterns and progress in ovarian cancer over 14 years. *Obstet Gynecol* 2006;108:521-8.  
[PUBMED](#) | [CROSSREF](#)
29. Cabanes A, Vidal E, Pérez-Gómez B, Aragonés N, López-Abente G, Pollán M. Age-specific breast, uterine and ovarian cancer mortality trends in Spain: changes from 1980 to 2006. *Cancer Epidemiol* 2009;33:169-75.  
[PUBMED](#) | [CROSSREF](#)
30. Chan JK, Urban R, Cheung MK, Osann K, Shin JY, Husain A, et al. Ovarian cancer in younger vs older women: a population-based analysis. *Br J Cancer* 2006;95:1314-20.  
[PUBMED](#) | [CROSSREF](#)
31. Chan JK, Loizzi V, Lin YG, Osann K, Brewster WR, DiSaia PJ. Stages III and IV invasive epithelial ovarian carcinoma in younger versus older women: what prognostic factors are important? *Obstet Gynecol* 2003;102:156-61.  
[PUBMED](#)
32. Thigpen T, Brady MF, Omura GA, Creasman WT, McGuire WP, Hoskins WJ, et al. Age as a prognostic factor in ovarian carcinoma. The Gynecologic Oncology Group experience. *Cancer* 1993;71:606-14.  
[PUBMED](#) | [CROSSREF](#)
33. Kosary CL. FIGO stage, histology, histologic grade, age and race as prognostic factors in determining survival for cancers of the female gynecological system: an analysis of 1973–87 SEER cases of cancers of the endometrium, cervix, ovary, vulva, and vagina. *Semin Surg Oncol* 1994;10:31-46.  
[PUBMED](#) | [CROSSREF](#)

34. Dinkelspiel HE, Tergas AI, Zimmerman LA, Burke WM, Hou JY, Chen L, et al. Use and duration of chemotherapy and its impact on survival in early-stage ovarian cancer. *Gynecol Oncol* 2015;137:203-9.  
[PUBMED](#) | [CROSSREF](#)
35. Takano M, Sugiyama T, Yaegashi N, Suzuki M, Tsuda H, Sagae S, et al. Progression-free survival and overall survival of patients with clear cell carcinoma of the ovary treated with paclitaxel-carboplatin or irinotecan-cisplatin: retrospective analysis. *Int J Clin Oncol* 2007;12:256-60.  
[PUBMED](#) | [CROSSREF](#)
36. Kurman RJ, Shih IM. Pathogenesis of ovarian cancer: lessons from morphology and molecular biology and their clinical implications. *Int J Gynecol Pathol* 2008;27:151-60.  
[PUBMED](#)
37. Yoshida S, Furukawa N, Haruta S, Tanase Y, Kanayama S, Noguchi T, et al. Theoretical model of treatment strategies for clear cell carcinoma of the ovary: focus on perspectives. *Cancer Treat Rev* 2009;35:608-15.  
[PUBMED](#) | [CROSSREF](#)
38. Zorn KK, Bonome T, Gangi L, Chandramouli GV, Awtrey CS, Gardner GJ, et al. Gene expression profiles of serous, endometrioid, and clear cell subtypes of ovarian and endometrial cancer. *Clin Cancer Res* 2005;11:6422-30.  
[PUBMED](#) | [CROSSREF](#)
39. Stany MP, Bonome T, Wamunyokoli F, Zorn K, Ozbun L, Park DC, et al. Classification of ovarian cancer: a genomic analysis. *Adv Exp Med Biol* 2008;622:23-33.  
[PUBMED](#) | [CROSSREF](#)
40. Farley J, Ozbun LL, Birrer MJ. Genomic analysis of epithelial ovarian cancer. *Cell Res* 2008;18:538-48.  
[PUBMED](#) | [CROSSREF](#)