

MRI Findings of Synovial Lipoma Arborescens of the Hip: A Case Report¹

Hee-Jin Park, M.D., Sung-Il Park, M.D.², Chan-Sub Park, M.D., Mi-Sung Kim, M.D.,
Noh-Hyuck Park, M.D., Jai-Hyung Park, M.D.³, Sang-Yeop Yi, M.D.⁴

Lipoma arborescens is a rare intra-articular lesion consisting of villous lipomatous proliferation of the synovium that tends to occur in the knee joint, especially in the suprapatellar pouch. The lesion has been observed in other locations, including the glenohumeral joint, subdeltoid bursa, hip, and elbow. We report a case of a lipoma arborescens of a unilateral hip joint in a 34-year-old man. MRI and a whole body bone scan were performed. In addition, a surgical synovectomy was performed and microscopic examination of the tumor revealed multiple variable-sized villous masses composed of mature fat tissue and lined by synovial cells which confirmed the diagnosis of lipoma arborescens.

Index words : Magnetic Resonance Imaging

Lipoma

Soft Tissue Neoplasms

Hip

Synovial Membrane

Lipoma arborescens (LA) is a rare intra-articular lesion consisting of villous lipomatous proliferation of the synovium that tends to occur in the knee joint, especially in the suprapatellar pouch (1). The lesion has been observed in other locations, including the glenohumeral joint, subdeltoid bursa, hip, and elbow (2). It may be similar to other proliferations of the synovial membrane, but the characteristic feature is the macroscopic

hypertrophic lipomatous synovial tissue. The term "arborescens" describes the characteristic tree-like morphology of this lipomatous villous synovial proliferation, which resembles a frond-like synovial mass (3). Involvement of the hip joint is rarely encountered. To our knowledge, only a few cases were reported. Wolf RS et al. (4) and Noel ER et al. (5) reported hip joint involvement of LA in previous orthopedic and rheumatologic literatures. However, the radiologic literature indicating solitary involvement of the hip joint has not been reported. We report a case of MR imaging on a lipoma arborescens of the hip joint, which was pathologically confirmed. The MRI findings were found to help the early diagnosis of this disorder.

Case Report

A 34-year-old man presented at our hospital with right hip pain for the last ten years. The symptoms were ag-

¹Department of Radiology, Myoungji Hospital, Kwandong University College of Medicine

²Department of Radiology, Shinchon Severance Hospital, Yonsei University School of Medicine

³Department of Orthopedic Surgery, Myoungji Hospital, Kwandong University College of Medicine

⁴Department of Pathology, Myoungji Hospital, Kwandong University College of Medicine

Received March 23, 2010 ; Accepted August 21, 2010

Address reprint requests to : Jai-Hyung Park, M.D., Department of Orthopedic Surgery, Myoungji Hospital, Kwandong University College of Medicine, 697-24 Hwajong-dong, Dugyang-gu, Koyang-si Kyunggi-do 412-270, Korea.

Tel. 82-31-810-6530 Fax. 82-31-810-6537

E-mail: wonnyipia@kwandong.ac.kr



Fig. 1. Plain radiograph reveals joint space narrowing and erosive changes in the inferomedial portion of the right femoral head, but no gross calcification. Extrinsic indentation in the medial aspect is also noted.

gravated after walking. A physical examination revealed no external wound or swelling. Limitation of the right hip motion range was noted and evaluated as follows: (flexion/extension: 100/10, external rotation/internal rotation: 40/10, abduction 30) and the left hip motion range evaluated was as (100/10, 60/40, 60). Vital signs were stable and the white blood count was normal. Plain radiographs showed joint space narrowing and erosive changes in the inferomedial portion of the right femoral head, but no gross calcification (Fig. 1). MRI revealed a large villous, frond-like mass just below the right hip joint, abutting synovium. This synovium-based lesion had a signal intensity similar to that of fat on T1-weighted, T2-weighted, and fat saturated images. Mild joint effusion was noted, but significant marrow edema or erosive changes were not noted (Fig. 2). Whole body bone scan was performed to exclude the possibility of other joint involvement. A radioisotope study noted the



A



B



C

Fig. 2. Axial T1-weighted (A) and T2-weighted (B) MR images of the right hip show the frond-like villous lipomatous proliferation of the synovium with signal corresponding to the fat (arrow). A coronal T2-weighted fat-suppressed MR image (C) shows decreased signal intensity of synovial proliferation identical to that of subcutaneous fat (arrow).



Fig. 3. A whole body bone scan (30 mci of Tc-99m MDP) shows increased uptake in the right hip joint.

increased uptake rate of the right hip joint (Fig. 3). A surgical synovectomy was performed and the microscopic examination of the tumor revealed multiple variable-sized villous masses composed of mature fat tissue and lined by synovial cells (Fig. 4).

Discussion

Synovial lipoma arborescens is a rare disorder of unknown etiology and is characterized by a villolipomatous proliferation of the synovial tissue (3). However, its association with chronic inflammatory disease such as a rheumatoid arthritis, degenerative lesions, or trauma is frequently reported (6). LA is usually mono-articular and mainly localized in the knee, however other articular locations such as the hip (3 cases), the shoulder (2 cases), the wrist (2 cases) and the elbow (1 case) have been described (3). Wolf RS et al. (4) and Noel ER et al. (5) reported hip joint involvement of LA in orthopedic and rheumatologic literatures. Patients typically are seen with a progressive, painless swelling of the joint. As the volume of the effusion increases, pain and limitation of the range of motion often develop. The clinical course is often marked by intermittent exacerbations, with tense effusions lasting for several days (7). The laboratory findings are generally unremarkable and a joint fluid study was negative for crystal or bacterial infection (8). The appearance of LA on MRI is believed to be pathognomonic. MRI outlined the synovial mass and readily revealed its frond-like appearance. The lesion demonstrated the same signal intensity as fat on all sequences (7). In this case, we could see a large villous,

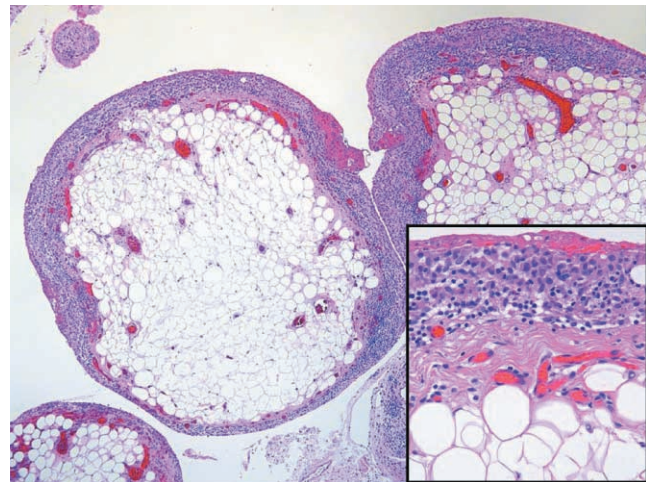


Fig. 4. Microscopic examination of the tumor reveals villous masses composed of mature adipocytes lined by synovial cells ($\times 40$, inset $\times 200$).

frond-like mass just below right hip joint abutting the synovium. The signal of the lesion was similar to that of fat on T1-weighted, T2-weighted, and fat saturated images. The differential diagnosis of LA includes intra-articular lipoma, synovial hemangioma, and chronic inflammatory synovial proliferation. Intra-articular lipoma is a solitary localized mass of adipose tissue with a round or oval contour without synovial changes, whereas LA is characterized by diffuse subsynovial fat deposition of a villous appearance, associated joint effusion, and a synovial cyst (2). However, precise differentiation lies in the microscopic and macroscopic appearances. Under the microscope, LA revealed diffuse replacement of the subsynovial layer by mature fat cells with moderate infiltration of mononuclear inflammatory cells. Intra-articular lipomas, which may be covered by the synovium, does not arise from or replace the subsynovial layer (9). Synovial hemangiomas appear as intra-articular or extra-articular lesions of intermediate signal intensity on T1- and T2-weighted images, with areas of low signal intensity corresponding to calcified phleboliths or a fluid void in abnormal vessels (2). In this case, clinical diagnosis was synovitis but we could diagnose it as LA because of the characteristic shape of the villous, frond-like mass, which had similar signals to fat. The recommended treatment for LA is arthrotomy and synovectomy (10).

We report MR findings of a case of lipoma arborescens of the unilateral hip joint, which is a rare intra-articular lesion that should be considered in the differential diagnosis of patients who have joint swelling. MRI allows a specific preoperative diagnosis and differ-

ential diagnosis.

References

1. Feller JF, Rishi M, Hughes EC. Lipoma arborescens of the knee: MR demonstration. *AJR Am J Roentgenol* 1994;163:162-164
2. Ryu KN, Jaovisidha S, Schweitzer M, Motta AO, Resnick D. MR imaging of lipoma arborescens of the knee joint. *AJR Am J Roentgenol* 1996;176:1229-1232
3. Bejia I, Younes M, Moussa A, Said M, Touzi M, Bergaoui N. Lipoma arborescens affecting multiple joints. *Skeletal Radiol* 2005;34:536-538
4. Wolf RS, Zoys GN, Saldivar VA, Williams RP. Lipoma arborescens of the hip. *Am J Orthop* 2002;31:276-279
5. Noel ER, Tebib JG, Dumontet C, Colson F, Carret JP, Vauzelle JL, et al. Synovial lipoma arborescens of the hip. *Clin Rheumatol* 1987;6:92-96
6. Martin S, Hernandez L, Romero J, Lafuente J, Poza AI, Ruiz P, et al. Diagnostic imaging of lipoma arborescens. *Skeletal Radiol* 1998;27:325-329
7. Sola JB, Wright RW. Arthroscopic treatment for lipoma arborescens of the knee. *J Bone Joint Surg Am* 1998;80:99-103
8. Edamitsu S, Mizuta H, Kubota K, Matsukawa A. Lipoma arborescens with hemarthrosis of the knee: a case report. *Acta Orthop Scand* 1993;64:601-602
9. Yan CH, Wong JW, Yip DK. Bilateral knee lipoma arborescens: a case report. *J Orthop Surg* 2008;16:107-110
10. Hallel T, Lew S, Bansal M. Villous lipomatous proliferation of the synovial membrane (lipoma arborescens). *J Bone Joint Surg Am* 1988;70:264-270

대한영상의학회지 2010 ; 63 : 561-564

고관절에 발생한 수목상 지방종의 MRI소견: 증례 보고¹

¹관동대학교 의과대학 명지병원 영상의학과

²연세대학교 의과대학 신촌세브란스병원 영상의학과

³관동대학교 의과대학 명지병원 정형외과

⁴관동대학교 의과대학 명지병원 병리과

박희진 · 박성일² · 박찬섭 · 김미성 · 박노혁 · 박재형³ · 이상엽⁴

수목상지방종은 활액막의 용모성 지방 증식을 동반한 드문 관절 내 병변으로 슬관절 주위, 특히 상슬개골와에 생기는 경향이 있다. 이 병변은 다른 부위, 예컨대 견관절, 삼각근하낭, 고관절 그리고 주관절 등에서도 관찰될 수 있으나 매우 드문 편이다. 우리는 34세 남자환자에서 편측으로 발생한 수목상지방종 증례를 보고한다. MRI와 전신 골주사검사가 시행되었고 수술적 활액막 제거가 이루어졌다. 병리조직학적 검사에서 수목상지방종으로 진단되었다.