

만병초 복용후 발생한 심한 서맥성부정맥 1예

최유식¹ · 장인성² · 김병하¹ · 권나영¹ · 김재덕¹
 이명용¹ · 이무용¹ · 김영권¹ · 김갑득² · 송화식²

A Case of Severe Bradyarrhythmia after Ingestion of *Rhododendron Brachycarpum*

You-Shik Choi, MD¹, In-Sung Jang, MD², Byoung-Ha Kim, MD¹, Na-Young Kwon, MD¹,
 Jae-Deok Kim, MD¹, Myoung-Yong Lee, MD¹, Moo-Yong Rhee, MD¹,
 Young-Kwon Kim, MD¹, Gab-Teug Kim, MD² and Hwa-Sik Song, MD²

¹Departments of Internal Medicine, ²Emergency Medicine, College of Medicine, Dankook University, Cheonan, Korea

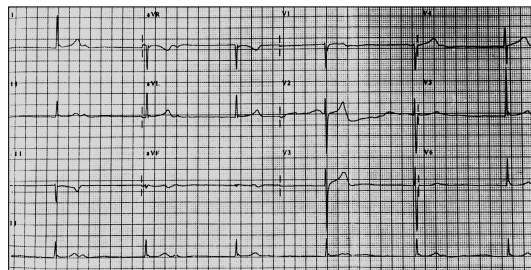
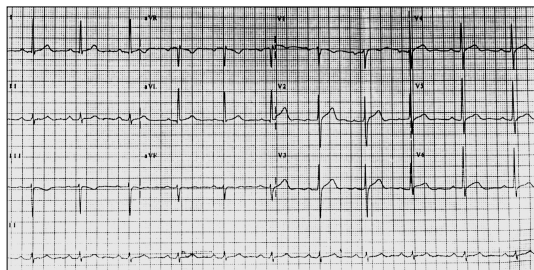
ABSTRACT

Rhododendron brachycarpum has been known as a panacea in Korean folk medicine, and is used to treat various diseases including hypertension. Excessive ingestion can cause intoxication by grayanotoxin. We experienced a 59 year-old man suffering of grayanotoxin intoxication following excessive ingestion of *Rhododendron brachycarpum*. The patient presented dizziness, weakness, and chest discomfort with cold sweats. Electrocardiography showed marked sinus bradycardia with atrio-ventricular dissociation. With intravenous saline and atropine, the patient recovered. This case calls attention to the potential cardiotoxicity of Korean folk medicine *Rhododendron brachycarpum*. (Korean Circulation J 2002;32(3):268-270)

KEY WORDS : Bradycardia ; Grayanotoxin ; *Rhododendron brachycarpum*.

서론

(*Rhododendron brachycarpum*) (Ericaceae) 가, 가, 가, 가, 가, 가, 가, 가, GTX, Grayan -
 medotoxin) otoxin(GTX) 가, 가, 가, 가, GTX, Grayan -
 grayanotoxin(an - dro - GTX, Grayan -
 : 2001 10 4
 : 2001 11 14
 : 330 - 714 29 가 (brad -
 : (041) 550 - 3920 : (041) 556 - 3256 yarrhythmia)가
 E - mail : rheemy@anseio.dankook.ac.kr



증례

: , 59 .

-
- , ,

: 20 가

가

1.5 L

가 1 가

: 5 3

carvedilol 25 mg losartan 50 mg .

가 : .

: 68/38 mmHg, 36.

5 , 36 / , 20 / .

$$\vdots$$

6,370/mm³, 13.7 g/dL, 161,
000/mm³, Na⁺ 142 mEq/L, K⁺

5.2 mEq/L, Cl^- 112 mEq/L, CK

54 IU/L, CK - MB 14 IU/L, LDH 333 IU/L, BUN 20

mg/dL, creatinine 1.3 mg/dL .

(Fig. 1).

$$\vdots$$

1.0 mg . 3

98

38

1.0 mg 50

2,

67 / 1

(Fig. 2). 3

24

10 -

sartan 50 mg dihydrochlorothiazide 12.5 mg

고찰

1)2)

1) GTX가 1)

가

1 - 3)

GTX

가 (Mad

Honey Disease).⁴⁾⁵⁾

가

7)8)

GTX

가

가 .

GTX

9)

가, 10)

270

Korean Circulation J 2002;32(3):268-270