

정상 핵형(46, XX)인 터너 표현형 환자에서 병발된 관상 동정맥루에 대한 도관을 통한 코일 색전술 1예

이기성¹ · 두영철¹ · 김호철³ · 김두만² · 유희승¹
신운건¹ · 박우정¹ · 한규록¹ · 오동진¹ · 조현찬⁴

Transcatheter Coil Embolization of Coronary Arteriovenous Fistula in Patient with Turner Phenotype with 46, XX

Ki-Sung Lee, MD¹, Young-Cheoul Doo, MD¹, Ho-Cheoul Kim, MD³, Doo-Man Kim, MD²,
Hee-Seung Yoo, MD¹, Woon-Geon Shin, MD¹, Woo-Jung Park, MD¹,
Kyoo-Rok Han, MD¹, Dong-Jin Oh, MD¹ and Hyoun-Chan Cho, MD⁴

¹Division of Cardiology, ²Endocrinology, ³Internal Medicine, Radiology, ⁴Clinical Pathology,
Kang-Dong Sacred Heart Hospital, College of Medicine, Hallym University, Seoul, Korea

ABSTRACT

The coronary arteriovenous fistula (CAVF) is a rare congenital anomaly but constitutes the most common hemodynamically significant coronary artery anomaly. Transcatheter embolization is as an effective alternative to surgery even though procedure may be complicated by migration of the coil into peripheral vessels or pulmonary arteries. To our knowledge, the association of CAVF with Turner syndrome was not reported. We report a case of successful coil embolization of CAVF using a complex, helical-fibred platinum coil in patient with Turner phenotype with 46, XX. (**Korean Circulation J 2000;30(10):1271-1274**)

KEY WORDS : Coronary arteriovenous fistula · Turner's syndrome · Coil embolization.

서 론

가
: 2000 5 22
: 2000 9 25
: , 134 - 701 445
: (02) 2224 - 2646 · : (02) 478 - 6925
E - mail : ycdoo97@www.hallym.or.kr

가
(gonadal dysf -
unction), (poor development of se -
condary sexual characteristics), (webbed ne -

ck), (cubitus valgus)

가 helic -
alfibered platinum coil

1

증 레

54 가 1997 2 1

1

(LH) 11.2 mIU/ml

(2 15.4 mIU/ml), (FSH)

32.1 mIU/ml(1.7 8.5 mIU/ml)

54 mm, 11 mm

64%

(1997)

46, XX

X

(cardiothoracic ratio

55%)가

X -

가

가

(distal drainage site)

(main pulmonary artery)

(color doppler jet)가

(Qp/Qs) 가 1.5

(7 French, Judkins left 4)

가

(Fig. 1). 가

. 0.014 ~

3 French

3 French

1

Platinum

coil(Target Therapeutics, Fremont, California, USA)

2000 2

(

가

X -

가

가

가

(Fig. 2).

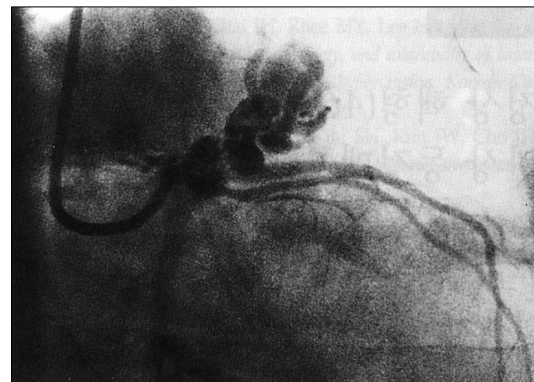


Fig. 1. Selective angiography of left anterior descending coronary artery (LAD) using guide catheter demonstrated a large fistulous artery arising from the proximal LAD and draining into the main pulmonary artery.

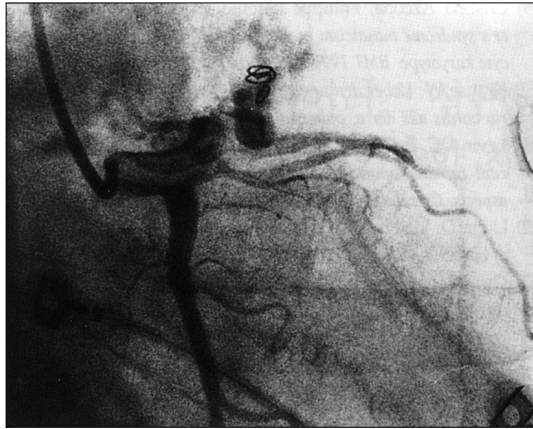


Fig. 2. Repeat angiography after coil embolization shows complete closure of the main fistula with faint residual flow through another small fistula.

(partial anomalous pulmonary venous return)

4)5)

가

Noonan

15 - 18)

6 - 8)

Rittenhouse

19)

가

가

2.2

5%,¹⁷⁾

3.6%¹⁸⁾가

가

고 안

6 - 8)

1997

1865 Krause

(Tornado coil, Complex helical
fibred platinum coil)

, 가
1 - 3)10)

8)

11)

가

6)7)

(53%)

가

(40%)

가 .¹⁾

가

13)14)

(, ,)

가

가

. 45, X

가

요 약

20 50%
(aortic

가

coarctation)

50%

70%

1

중심 단어 :

REFERENCES

- 1) Liberthson RR, Sagar K, Berkoben JP, Weintraube RM, Levine FH. Congenital coronary arteriovenous fistula: Report of 13 patients, review of literature and delineation of management. *Circulation* 1979;59:849-54.
- 2) Benson PA, Lack AR. Anomalous aortic origin of left coronary artery: Report of two cases. *Arch Pathol* 1968;86:214-6.
- 3) Cohen LS, Shaw LD. Fatal myocardial infarction in an 11 year old boy associated with a unique coronary artery anomaly. *Am J Cardiol* 1967;19:420-3.
- 4) Mazzanti L, Cacciari E. Congenital heart disease in patients with Turner's syndrome. Italian study Group for Turner syndrome (ISGTS). *J Pediatr* 1998;133:688-92.
- 5) Prandstraller D, Mazzanti L, Picchio FM, Magnani C, Bergamaschi R, Perri A, et al. Turner's syndrome: Cardiology profile according to the different chromosomal patterns and long-term clinical follow-up of 136 nonpreselected patients. *Pediatr Cardiol* 1999;20:108-12.
- 6) Perry SB, Rome J, Kearne JF, Baim DS, Lock JE. Transcatheter closure of coronary artery fistula. *J Am Coll Cardiol* 1992;20:205-9.
- 7) Reidy JF, Anjos RT, Qureshi SA, Baker EJ, Tynan MJ. Transcatheter embolization in the treatment of coronary artery fistulas. *J Am Coll Cardiol* 1991;18:187-92.
- 8) Cho JS, Kin DS, Suh JK, Jang YS, Kim HS, Lee DY. A case of percutaneous transcatheter coil embolization for congenital coronary arteriovenous fistula. *Korean Circulation J* 1997;27:927-32.
- 9) Cristina Azcona, Philippe Bareille, Richard Stanhope. Turner's syndrome mosaicism in patients with a normal blood lymphocyte karyotype. *BMJ* 1999;318:856-7.
- 10) Krause W. Ueber den ursprung einer access orischen a. coronaria cordis aus der a. pulmonalis. *Z Rat Med* 1865;24:225-7.
- 11) Levin DC, Fellows KE, Abrams HL. Hemodynamically significant primary anomalies of the coronary arteries: Angiographic aspects. *Circulation* 1978;58:25-34.
- 12) Liotta D, Hallman GL, Hall RJ, Cooley DA. Surgical treatment of congenital coronary artery fistula. *Surgery* 1971;70:856-64.
- 13) Ogden JA. Congenital anomalies of the coronary arteries. *Am J Cardiol* 1970;25:474-9.
- 14) Bjork G, Crafoord C. Arteriovenous aneurysm in the pulmonary artery simulative patient ductus arteriosus. *Thorax* 1947;2:65-70.
- 15) Bogers AJ, Quaegebeur JM, Huysmans HA. Early and late results of surgical treatment of congenital coronary artery fistula. *Thorax* 1987;42:369-73.
- 16) Hoffman JIE. Congenital anomalies of the coronary vessels and the aortic root. In Emmanouilides GC, Riemenschneider TA, Allen HD, Gurgessell HP (eds): *Heart Disease in Infants, Children, and Adolescents*. Baltimore: William and Wilkins;1995. p.769-91.
- 17) Wilde DC, Watt I. Congenital coronary artery fistula: Six new cases with a collective review. *Clin Radiol* 1980;31:301-11.
- 18) Chen Y, Belboul A, Roberts D. The surgical management of congenital coronary artery fistula. *Coronary Artery Dis* 1994;5:995-1000.
- 19) Rittenhouse EA, doty DB, Ehrenhaft JL. Congenital coronary artery cardiac chamber fistula. *Ann Thorac Surg* 1975;20:468-85.