

가

:

1

2

가

. 가

1 - 3

18

1

가

가

Gardner
(Oldfield's disease)

가

, Turcot
(1).

, 가

Oldfield

(Fig. 1G).

(total proctocolectomy with

ileostomy) ,

4

(2).

18 가

18

가

가

8000

가

1

(1, 3),

10 20

(4).

(adenomatous polyp)

, 18

,

, 가

가

, 가

가 36

36

가

, 가

, 4

,

15

17

, 19

(computed

tomography, CT)

,

가

,

6 cm

가

Cripps

(5). 1934

1939

Lockhart - Mummery가

(Fig. 1A, B).

(5). 1950

Gardner

Stephens

(5),

(osteoma),

(epidermoid cyst),

(desmoid tumor)

가 (extrain-

testinal manifestation)가

가

cm

. 4

1.5

' Gardner
tous polyposis coli)APC (adenoma-
tous polyposis coli)
가 , APC

1

2

2003 7 21

2003 11 21

: 가

(spectrum) 5 (5 ')

(6). APC (hepatocyte) (epithelial type)

end of the gene) (7). (mixed type)

가 가 (fetal) (embryonal)

, 가 가 (osteoid)

(2). (papillary thyroid carcinoma) (cartilage mesenchymal)

(8). 100,000 1 (10). (Fig. 1E),

, Hughes 가 가 (Fig. 1F)

0.42% 가 가 (11),

가 가 CT

(mes - CT

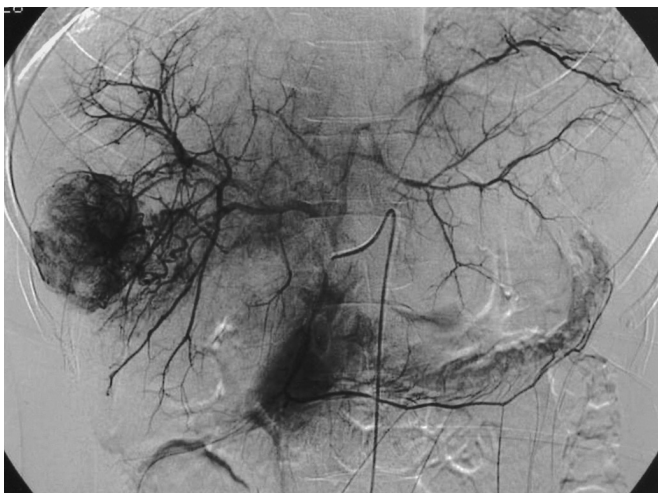
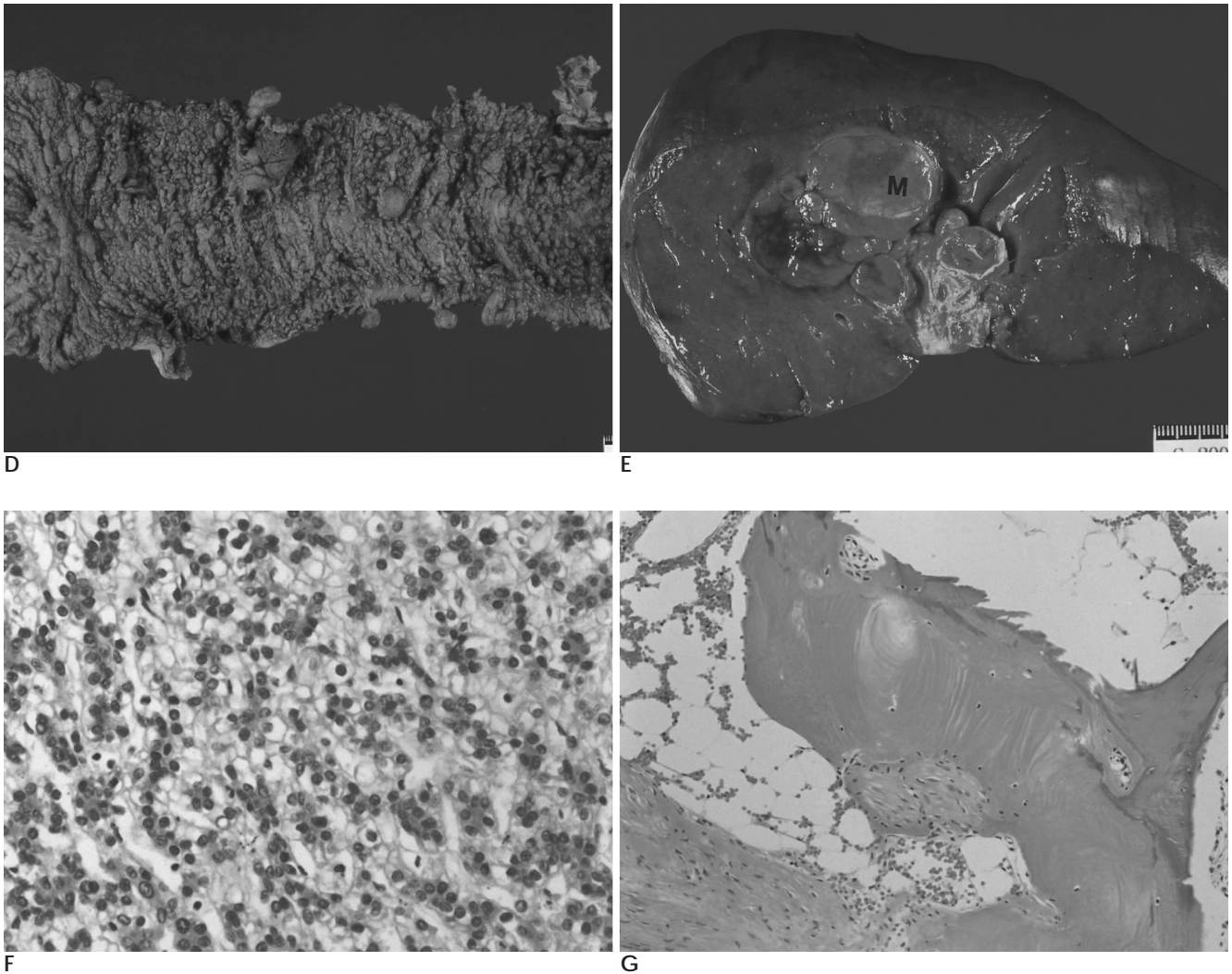


Fig. 1. A, B. Noncontrast enhanced CT (**A**) shows low attenuated mass with multiple calcific densities in the right lobe of liver. Contrast enhanced CT (**B**) reveals well enhanced multi-lobulated mass in the right lobe of the liver. **C.** Arterial-phase celiac angiogram (**G**) shows a hypervascular mass at the right lobe.



D-G. Gross specimens of the colon (D) shows multiple polyps in the colon and gross specimen of right lobe of the liver (E) shows lobulated mass (M) in the liver. At microscopic view (H & E stain) of the hepatic mass, fetal hepatocytes (F, $\times 200$) and mesenchymal tissues (G, $\times 40$) are noted.

가

가 18

가

, 가

가

가

가

1. Li FP, Thurber WA, Seddon J, Holmes J. Hepatoblastoma in families with polyposis coli. *JAMA* 1987;257:2475-2477
2. Giardiello FM, Offerhaus GJ, Krush AJ, et al. Risk of hepatoblastoma in familial adenomatous polyposis. *J Pediatr* 1991;119:766-768
3. Kingston JE, Herbert A, Draper GJ, Mann JR. Association between hepatoblastoma and polyposis coli. *Arch Dis Child* 1983;58:959-962
4. Gingold BS, Jagelman D, Turnbull RB. Surgical management of familial polyposis and Gardner's syndrome. *Am J Surg* 1979;137:54-56
5. LeSher AR, Castronuovo JJ Jr, Filipone AL Jr. Hepatoblastoma in a patient with familial polyposis coli. *Surgery* 1989;105:668-670
6. Davies DR, Armstrong JG, Thakker N, et al. Severe Gardner syndrome in families with mutations restricted to a specific region of the APC gene. *Am J Hum Genet* 1995;57:1151-1158
7. Giardiello FM, Petersen GM, Brensinger JD, et al. Hepatoblastoma and APC gene mutation in familial adenomatous polyposis. *Gut*

- 1996;39(96):867-869
8. Lynch HT, Thorson AG, McComb RD, Franklin BA, Tinley ST, Lynch JF. Familial adenomatous polyposis and extracolonic cancer. *Dig Dis Sci* 2001;46:2325-2332
9. Hughes LJ, Michels VV. Risk of hepatoblastoma in familial adenomatous polyposis. *Am J Med Genet* 1992;43:1023-1025
10. Gore R, Levine M. *Textbook of gastrointestinal radiology*. 2nd ed. Philadelphia: Saunders, 2000;1537-1542
11. Dachman AH, Pakter RL, Ros PR, Fishman EK, Goodman ZD, Lichtenstein JE. Hepatoblastoma: radiologic-pathologic correlation in 50 cases. *Radiology* 1987;164:15-19

J Korean Radiol Soc 2004;50:119 - 122

Hepatoblastoma in a Patient with Familial Adenomatous Polyposis: Case Report¹

Tae Eun Kim, M.D., Jang Ho Kim, M.D., Il Ki Lee, M.D., Jung Heon Hong, M.D., Ik Soo Kim, M.D.²

¹Department of Diagnostic Radiology, Fatima Hospital, Daegu

²Department of Pathology, Fatima Hospital, Daegu

Familial adenomatous polyposis and hepatoblastoma are rare conditions; the latter is closely related to the FAP gene. We describe the imaging findings of hepatoblastoma in a patient with polyposis coli.

Index words : Liver neoplasms, CT
Liver neoplasms, US
Colon neoplasms

Address reprint requests to : Tae Eun Kim, M.D., Department of Diagnostic Radiology, Fatima Hospital Daegu
302-1 Sinam-dong, Dong-gu, Daegu 700-600, Korea.
Tel. 82-53-940-7167 Fax. 82-53-952-7417 E-mail: nirvana1979@daum.net