



가
35
1
가
가
35
(tumor-like lesion) 0.7%가 (1).
가 가
가 (2).
30-40
(1). 1 가 (3).
35 가 3 (2, 4).
가
가
1 cm,
가
(Fig. 1A, B).
2 , 3 cm
0.9 cm 가 1.3×0.9×
1C, D). 가 (Fig.
가
6
(Fig. 1E, F).
가
가
(3, 5).
(Fig. 1G, H).

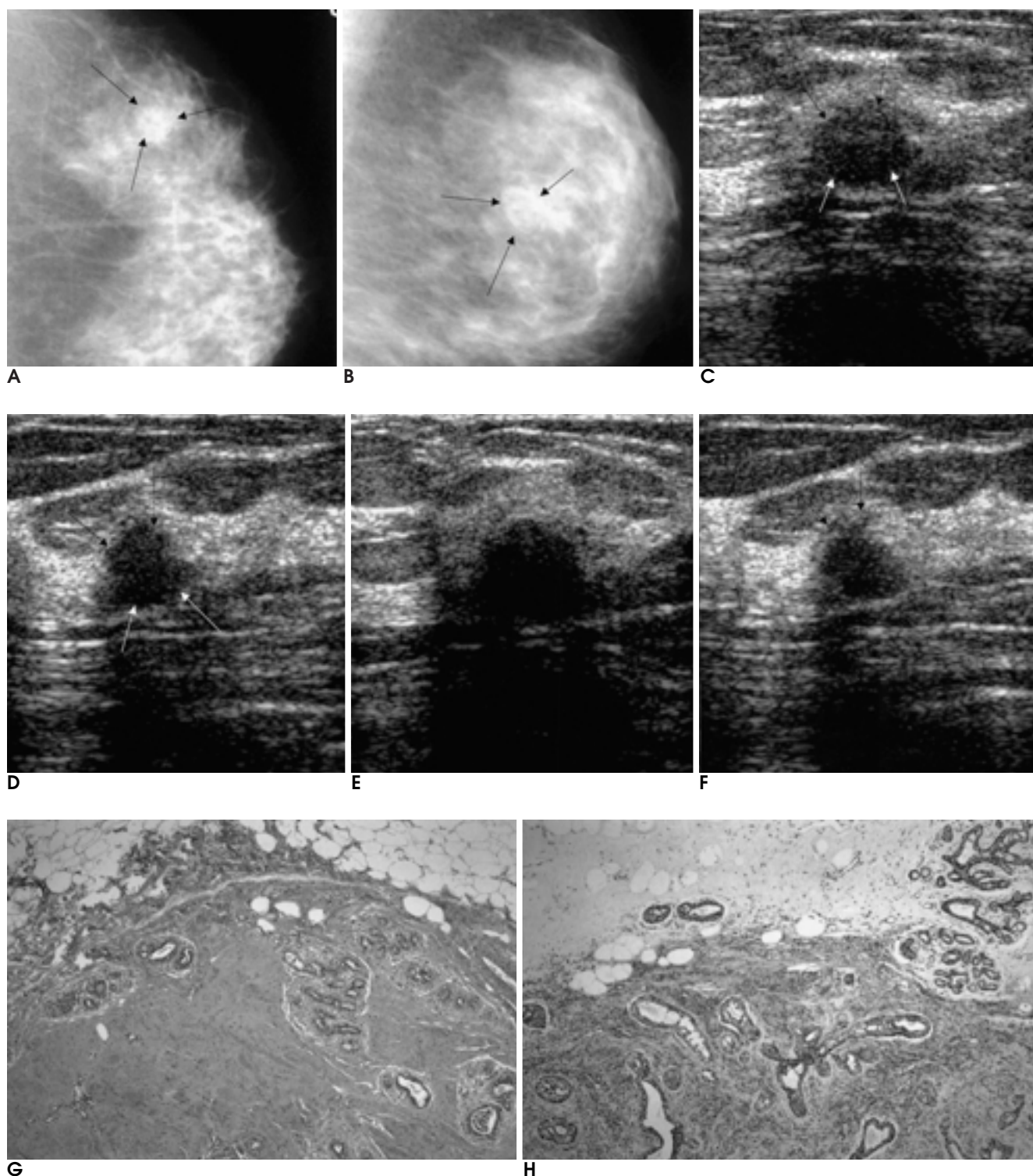


Fig. 1. A 35-year-old woman with muscular hamartoma.

A, B. Craniocaudal (**A**) and mediolateral oblique (**B**) mammograms show a 1 × 1 cm, ill-defined, ovoid and homogeneously high density mass (arrows) in upper outer quadrant of the left breast.

C, D. Transverse (**C**) and longitudinal (**D**) ultrasonograms show a 1.3 × 0.9 × 0.9 cm size, microlobulated hypoechoic mass (arrows) at 2 o'clock direction of the left breast.

E, F. Follow-up transverse (**E**) and longitudinal (**F**) ultrasonograms show the same mass with more prominent microlobulated margin (arrows).

G. Photomicrograph of the mass reveals a sharply demarcated nodule containing spindle cells admixed with mammary lobules and dilated ducts (H & E stain, × 20).

H. Immunohistochemical staining. Spindle cells are strongly positive for smooth muscle actin (brown color).

S - 100

(6).

(3, 5).

(6, 8).

(6).

(2, 4, 9, 10).

(4).

(9).

(3, 9).

1. Altermatt HJ, Gebbers JO, Laissue JA. Multiple hamartomas of the breast. *Appl Pathol* 1989;7:145-148
2. Abbitt PL, Paredes ES, Sloop FB. Breast hamartoma: a mammographic diagnosis. *South Med J* 1988;81:167-170
3. Ravakhah K, Javadi N, Simms R. Hamartoma of the breast in a man: First case report. *Breast Journal* 2001;7:266-268
4. Helvie MA, Adler DD, Rebner M, Oberman HA. Breast hamartomas: Variable mammographic appearance. *Radiology* 1989;170:417-421
5. Davies JD, Riddell RH. Muscular hamartomas of the breast. *J Pathol* 1973;111:209-211
6. Rosen PP. *Fibroepithelial neoplasms* In Rosen PP. *Rosen's breast pathology* Philadelphia: Lippincott-Raven, 1997:145-154
7. Al-Bozom IA, Abrams J. Spindle cell carcinoma of the breast, a mimicker of benign lesion. Case report and review of the literature. *Arch Pathol Lab Med* 1996;120:1066-1068
8. Wargotz ES, Norris HJ, Austin RM, Enzinger FM. Fibromatosis of the breast: A clinical and pathological study of 28 cases. *Am J Surg Pathol* 1987;11:38-45
9. Shepstone BJ, Wells CA, Berry AR, Ferguson JDP. Mammographic appearance and histopathological description of a muscular hamartoma of the breast. *Br J Radiol* 1985;58:459-461
10. Fiirgaard B, Kristensen S. Muscular hamartoma of the breast: A case report. *Acta Radiologica* 1992;33:115-116

J Korean Radiol Soc 2002;47:99 - 101

Muscular Hamartoma of the Breast: A Case Report¹

Byeong Seong Kang, M.D., Jeong Mi Park, M.D.

¹Department of Radiology, University of Ulsan College of Medicine, Asan Medical Center

Muscular hamartoma is a variant of breast hamartoma shown at microscopic examination to be composed of abundant smooth muscle cells. We report a case of muscular hamartoma occurring in a 35-year-old woman with an incidentally discovered breast mass, and confirmed by excisional biopsy. We also describe the radiologic and pathologic findings.

Index words : Breast neoplasms
Breast neoplasms, US
Breast radiography
Hamartoma

Address reprint requests to : Jeong Mi Park, M.D., Department of Radiology, University of Ulsan College of Medicine, Asan Medical Center, 388-1, Poongnap-dong, Songpa-gu, Seoul 138-736, Korea.
Tel. 82-2-3010-4400 Fax. 82-2-476-4719 E-mail: jmpark@amc.seoul.kr