

: 1 1

2

1

1-2% 2B & C).

(1).  
가 (2),  
(3)

1

(Fig. 3).

( CT),

26.5 × 21.0 × 14cm

가

71

가 1

가

(Fig. 4A).

AST/ALT 186/135 IU/L 가  
, ALP 1034 IU/L 가  
HBs Ag, HBc Ab, HCV Ab , HBs Ab  
(AFP) 2.3 ng

(Fig. 4B). PTAH(Phosphotungstic acid-hematoxylin)

4

가 (Fig. 1). CT  
가 HU 10

CT

(Fig. 2A).

가

가

가

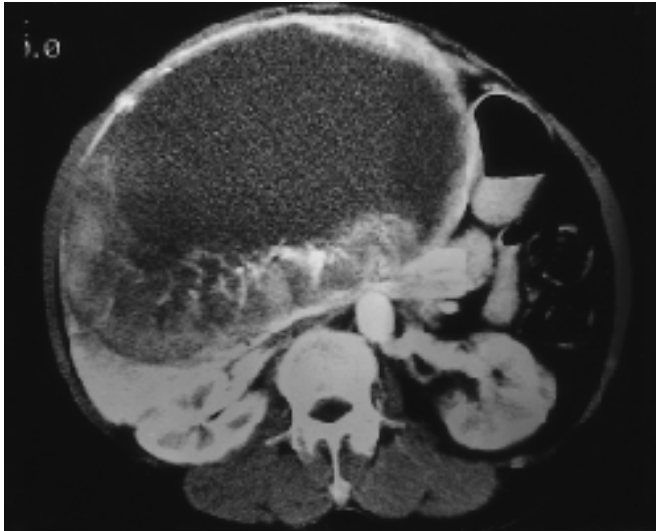
(Fig.



Fig. 1. Ultrasonographic finding shows a huge cystic mass with peripheral hyperechoic solid component involving segment 4 and right anterior segment.

1  
2

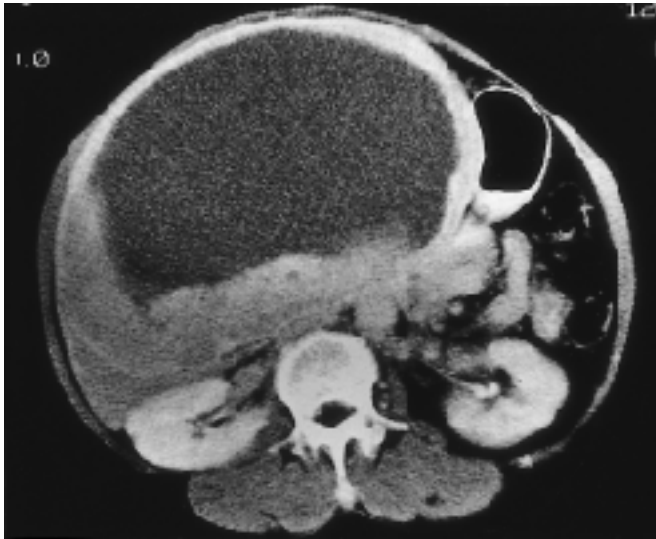
1999 11 16 2000 1 17



A



B



C

Fig. 2. Helical CT scan during arterial phase(A) shows a huge low attenuation mass with rich vascular structure of radiating pattern in heterogeneously enhancing solid portion. Helical CT scan during portal venous phase(B) shows more enhancing solid portion with thin rim of low attenuation. Helical CT scan during delayed phase(C) shows solid portion of iso attenuation with thin rim of high attenuation.

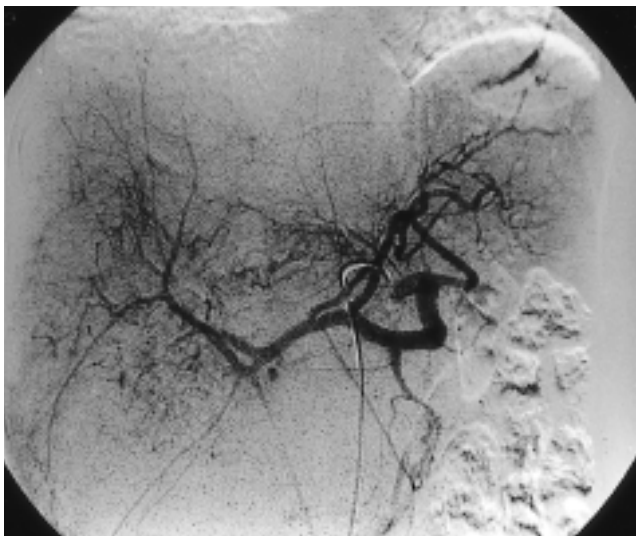


Fig. 3. Hepatic angiogram shows displaced celiac axis by tumor and neovascularity of spoke-wheel pattern supplied by right hepatic artery.

myoD1, myoglobin, skeletal muscle  
actin

(4).  
Davis (5) 5 11  
, 18 23 1  
, 1 6  
sarcoma botryoides  
Keeling (6) 3  
12 가  
6 6-15 , 6 60  
6  
(3). AFP Mori (7) 1  
AFP 가

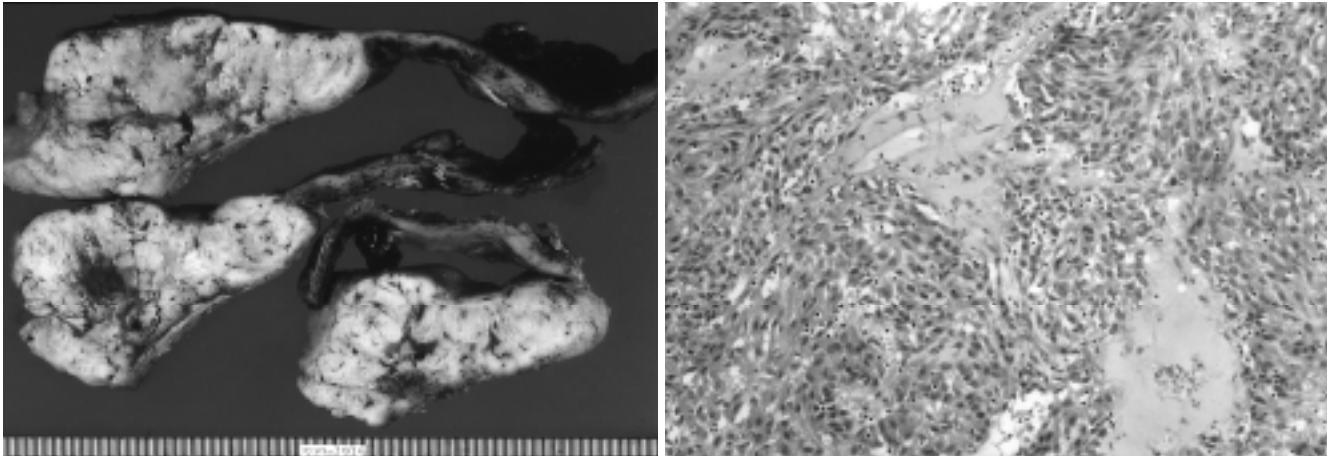


Fig. 4.A. Cut sections of the tumor demonstrate creamy yellow solid components, hemorrhagic to necrotic, fish-flesh appearance and extensive cystic degeneration.  
B. Photomicrograph exhibits hypercellular, spindle or oval cells, scattered in myxoid stroma(H&E stain, ×200).

(8).

. Abenzoa (8)

가

CT

가

(11, 12).

CT

가

가

Hayakawa (3)

CT

CT

가

가

. AFP가

CT

가

Watanabe (9)

CT

HU 10

가

가

가

가

Babut (10)

가

. Hayakawa (3)

2

1. Fong JA, Reuber BH. Primary leiomyosarcoma of the liver. *Human Pathol*, 1974;5:115-119
2. . . . . 1995;32:639-642
3. Hayakawa K, Shibata T, Yamashita K et al. Computed Tomography and angiogram of primary hepatic rhabdomyosarcoma : report of two adult cases. *Radiat Med* 1990;8:35-39
4. Anthony PP. *Tumours and tumour-like lesions of the liver and biliary tract*. In McSween RNM, Anthony PP, Scheuer PJ, eds. *Pathology of the liver*. 2nd ed. Edinburgh : Churchill-Livingstone, 1987:574-646
5. Davis GL, Kissane JM, Ishak KG. Embryonal rhabdomyosarcoma (sarcoma botryoides) of the biliary tree. report of five cases and a review of the literature. *Cancer* 1969;24:333-342
6. Keeling JW. Liver tumours in infancy and childhood. *J Pathol* 1970; 103:69-85
7. Mori H, Matsubara N, Fujii M, Kawai T, Tanaka T, Takahashi M. Alpha-fetoprotein producing rhabdomyosarcoma of the adult liver. *Acta Pathol Jpn* 1979;29:485-491

8. Abenzoa P, Manivel C, Wick MR, Hogen K, Dehner LP. Hepatoblastoma: immunohistochemical and ultrastructural study. *Hum Pathol* 1987;18:1025-1035
9. Watanabe A, Motoi M, Mizobuchi K et al. An adult case with rhabdomyosarcoma of the liver. *Jpn J Med* 1983;22:240-244
10. Babut JM, Ferrnand H, Braq H et al. Rhabdomyosarcoma hepa-

- tique chez l'enfant : a propos d'un cas. *Ann Chir* 1976;30:251-255
11. , , , , . 1992;28:783-787
12. , , . : 1 1999;40:107-109

# Primary Rhabdomyosarcoma of the Liver in Adult: A Case Report<sup>1</sup>

Soo Yeon Kim, M.D., Jae-Chan Shim, M.D., Ho Kyun Kim, M.D., Hye Kyung Lee, M.D.<sup>2</sup>

<sup>1</sup>Department of Diagnostic Radiology, College of Medicine, Inje University

<sup>2</sup>Department of Pathology, College of Medicine, Inje University

In adults, primary rhabdomyosarcoma of the liver is a rare lesion and the radiologic findings have not been reported. We describe the ultrasonographic, CT and angiographic findings of a case of primary rhabdomyosarcoma of the liver.

**Index words :** Computed tomography (CT)

Angiography

Liver neoplasms

Address reprint requests to : Jae-Chan Shim, M.D., Department of Diagnostic Radiology, Seoul Paik Hospital, College of Medicine, Inje University, 2-85, Jur-dong, Chung-ku, Seoul, 100-032 Korea.  
Tel. 82-2-2270-0133 Fax. 82-2-2266-6799