

가 : 1 1

2

가 (Nonpancreatic pseudocyst)

가 1

1/100,000-1/250,000

(Fig. 3A, B).

(1-3).

가

가

가

가

Ros

(4)

가 (enteric cyst),

(enteric duplica-

tion),

(5)

가

Fujita (6)

29

1

9×8cm

가

(Fig. 1),

CT

field units)가 -76

15 HU

(Fig. 2A, B).

, Treitz

100cm

9×8×5cm

HU (houns-

-40 HU,

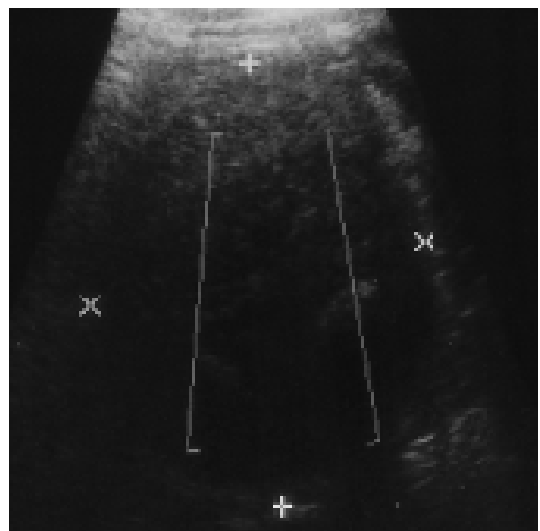


Fig. 1. US showed a cystic unilocular lesion containing three layered fat-fluid level. Upper layer consisted of fine echogenic spots, middle was low echoic and lower was anechoic.

1

2

1999 9 20

1999 12 8

가 : - 가
 (embryonic) (develop- 가
 mental), (traumatic) (acquired), (in- (5,6). CT
 fective) (degenerative) 가 , HU
 가 (chylous cyst) (4).
 , 가 , 가 가
 , 가 (5,6).
 가
 가

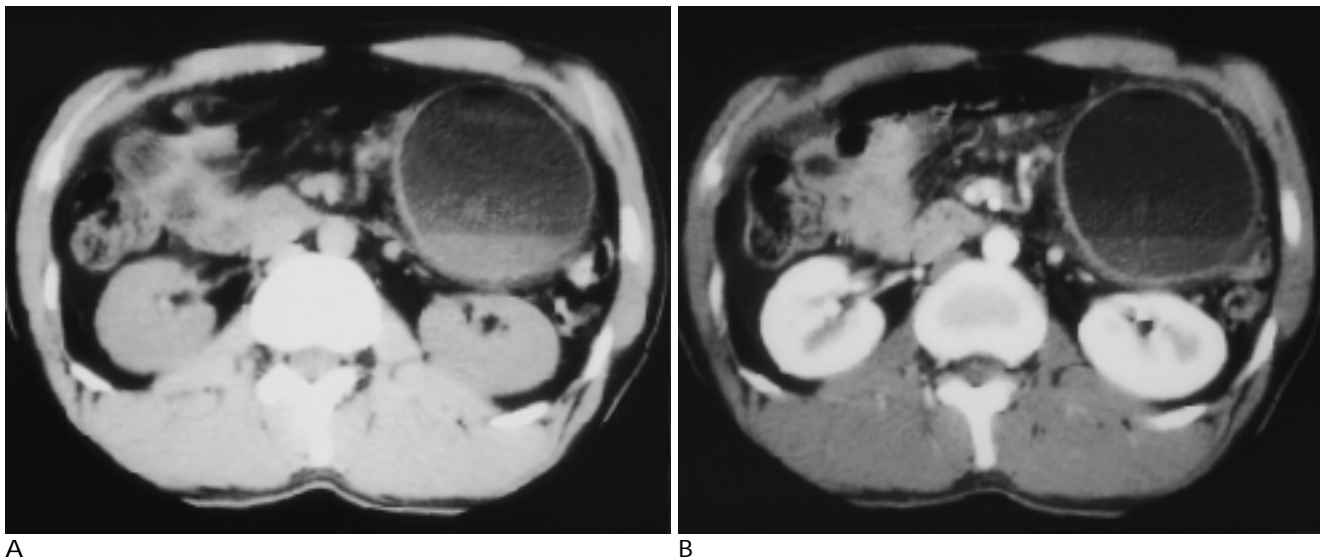


Fig. 2. A. CT scan revealed relatively thick walled cystic mass containing fat-fluid levels. The CT number of the upper layer was -76 HU, that of the middle layer was -40 HU and that of the lower 15 HU.
 B. On contrast enhanced CT scan, wall of cystic mass was enhanced.

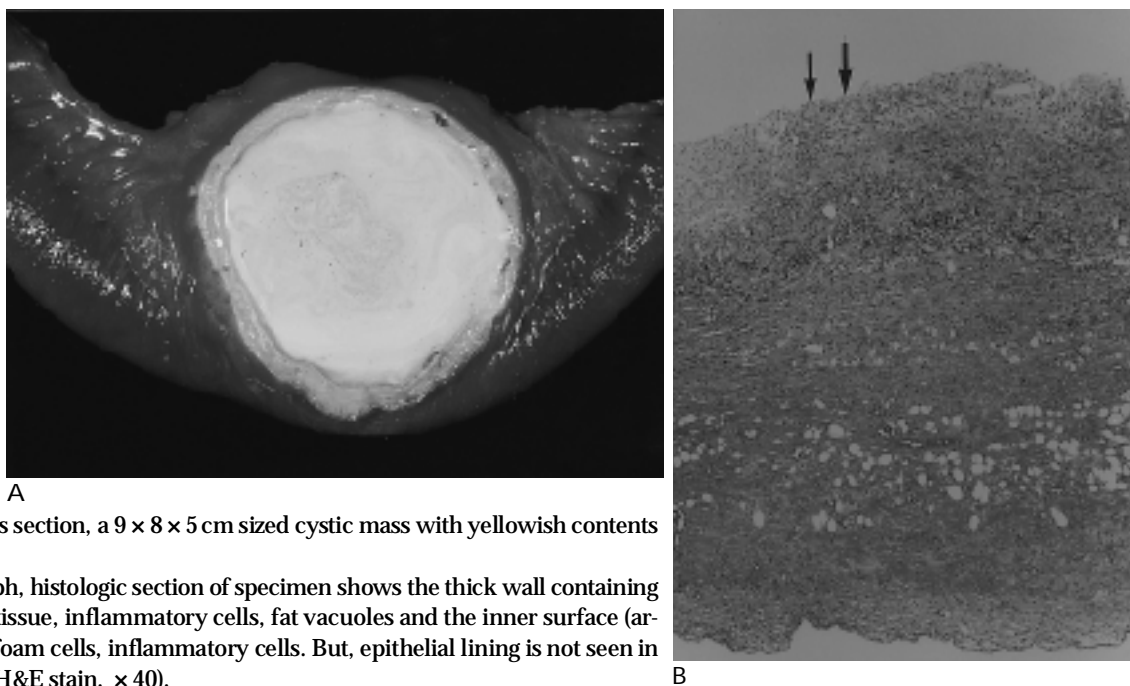


Fig. 3. A. Cut gross section, a $9 \times 8 \times 5$ cm sized cystic mass with yellowish contents is shown.
 B. Photomicrograph, histologic section of specimen shows the thick wall containing fibrocollagenous tissue, inflammatory cells, fat vacuoles and the inner surface (arrows) containing foam cells, inflammatory cells. But, epithelial lining is not seen in the inner surface(H&E stain, $\times 40$).

(5). , , CT

가

(hair ball)

가

(4-7).

가 가

가

가

가

1. Baird D, Radrany MG, Shanley DJ, et al. Mesenteric cyst with milk of calcium. *Abdom Imaging* 1994;19 :347-348
2. Engel S, Clagett OT, Harrison EG. Chylous cysts of the abdomen. *Surgery* 1961;50:593-599
3. Hardin WJ, Hardy JD. Mesenteric cysts. *Am J Surg* 1970;119:640-645
4. Ros PR, Olmsted WW, Moser RP, et al. Mesenteric and emmental cysts : histologic classification with imaging correlation. *Radiology* 1987;64:327-332
5. : CT . 1994;30(2):337-342
6. Fujita N, Noda Y, Kobayashi G, et al. Chylous cyst of the mesentery : US and CT diagnosis. *Abdom Imaging* 1995;20:259-261
7. Nakamura H, Hashimoto T, Akashi H, et al. Distinctive CT findings of unusual mesenteric cyst. *J Comput Assist Tomogr* 1987;11(6): 1024-1025

J Korean Radiol Soc 2000;42:307- 309

Nonpancreatic Pseudocyst with Fat-Fluid Level: A Case Report¹

Youn-Jong La, M.D., Gyo-Chang Choi, M.D., Eun-Suk Koh, M.D.²

¹Department of Diagnostic Radiology, Gumi Hospital, Soonchunhyang University

²Department of Anatomic Pathology, Gumi Hospital, Soonchunhyang University

Nonpancreatic pseudocyst is a rare lesion, with a specific fat-fluid level in the cyst. It is found among all age groups. The condition has been previously reported in foreign but not in domestic journals; we now describe one such case.

Index words : Mesentery, neoplasms

Mesentery, cysts

Mesentery, US

Mesentery, CT

Address reprint requests to : Gyo-Chang Choi, M.D., Department of Diagnostic Radiology, Gumi Hospital, Soonchunhyang University,
250, Gongdan-dong, Gumi, Kyungbuk 730-030, Korea.
Tel. 82-546-463-7151 Fax. 82-546-463-7504

: _____ : _____
 : _____
 : _____ : _____
 : ** :
 : **

2000

?

**

**

▽

- (2000. 3. 15.) : 10,000 15,000
- (2000. 3. 15.) : 15,000 20,000

Home Page

Fax

: _____ , : 025-01-0001-042, :
 Home Page : <http://www.radiology.or.kr> E-mail : office@radiology.or.kr
 : 121-8 ○ 137-130
 Tel (02) 578-8003 Fax (02) 529-7113

:
 :