

: 1

2 3

30 1

(localized fibrous tumor) 11 × 8 × 7cm 가 (Fig. 1B).

(1) 가 (Fig. 1C).

(2-3). 가 (Scarpa's layer) (gubernacu-

30 1 (CT) lum)

가 30 (Fig. 1D).

가 5 NSE(neuron-specific enolase), (vimentin),

1cm 가 (keratin), EMA(epithelial membrane antigen,

가 (), SMA(smooth muscle actin,), S-100

가 11 × 8 × 7cm

가 5-10MHz linear phase-ar-

ray (ATL, Bothell, U.S.A.) 가

가 (1).

가 가

가 (Fig. 1A).

CT 가 가 (2-3).

(Somatom plus 4, Siemens, Erlangen, Germany)

10 × 8cm 가

가 (pseudofibromatous perior-

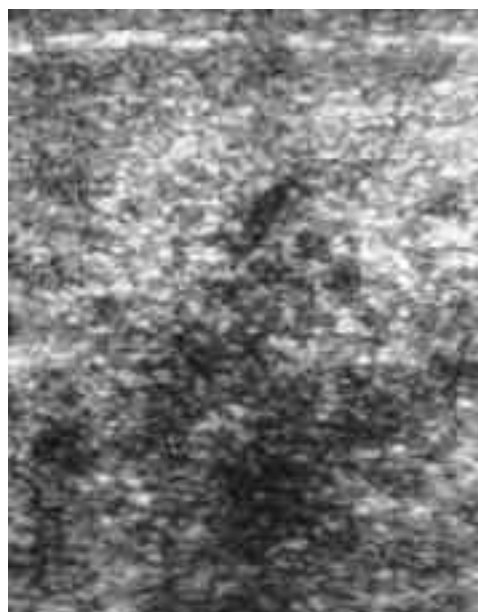
chitis), 가 (reactive periorchitis),

가 (reactive periorchitis and inflammatory pseudotu-

mor) (4).

가

1
2
3



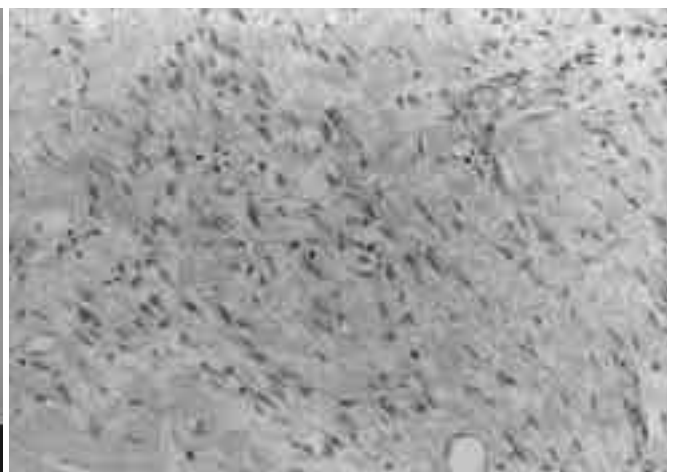
A



B



C



D

Fig. 1. A. Ultrasonography of the scrotum shows a huge heterogeneous mixed echoic mass.
 B. Enhanced CT scan shows heterogeneous enhanced a soft tissue mass(arrows) and displaced left testis(arrowhead) in left scrotal sac.
 C. Photography of the excised specimen shows well-encapsulated yellow colored gelatinous mass, which has no connection to scrotal contents. The mass has several nonhemorrhagic foci.
 D. Photomicrography shows wavy, spindle shaped tumor cells with variable cellularity. Myxoid areas are frequent. (H & E stain, $\times 200$)

- (adenomatoid tumor), mesothelioma) (8).
- (benign papillary (ma- 가
- (9). 가 가 5.3% 46% (10).
- (7).
- 가
- (4).
- 가 가 가 가
- (10). Kamiya Eimoto 가 8 (53%) 가 1 3 3 (5), (3), (2
1. Franz ME, Sharon WW. *Mesothelioma*. In Franz ME, Sharon WW, eds. *Soft tissue tumors*. 3rd ed. St. Louis: Mosby, 1995:810-813
 2. , , 1995;14:49-52
 3. McDonald RE, Sago AL, Novicki DE, Bagnall JW. Paratesticular mesothelioma. *J Urol* 1983;130:360-361
 4. Goodwin WE. Multiple, benign, fibrous tumors of tunica vaginalis testis. *J Urol* 1946;56:438-447
 5. , , 1995;29:533-535
 6. , , 1990;26:345-350
 7. Dandia SD, Ojha DG. Giant fibroma of the epididymis : A case report. *J Urol* 1996;96:941-943
 8. Chen KTK, Arhelger RB, Flam MS et al. Malignant mesothelioma of tunica vaginalis testis. *Urology* 1982;20:316-319
 9. Kamiya M, Eimoto T. Malignant mesothelioma of the tunica vaginalis. *Path Res Pract* 1990;186:680-684
 10. Jones MA, Youg RH, Scully RE. Malignant mesothelioma of the tunica vaginalis. A clinicopathologic analysis of 11 cases with review of literature. *Am J Surg Pathol* 1995; 19:815-825

Mesothelioma of Scrotum : A Case Report¹

Yong Seok Cheon, M.D., Ik Yang, M.D., Kyung Won Lee, M.D., Hong Dae Kim, M.D.
Soo Young Chung, M.D., Ki Kyung Kim, M.D.², Jung Weon Shim, M.D.³

¹Department of Radiology, College of Medicine, Hallym University

²Department of Urology, College of Medicine, Hallym University

³Department of Pathology, College of Medicine, Hallym University

Localized fibrous tumor of the scrotum is a very rare disease, and few radiologic features have been reported. We report the sonographic and CT findings of a case of localized fibrous tumor, which developed in the scrotum of a thirty-years-old man.

Index words : Scrotum, diseases
Scrotum, US
Scrotum, CT
Mesothelioma

Address reprint requests to : Yong Seok Cheon, M.D., Department of Radiology, Kangnam Sacred Heart Hospital, College of Medicine, Hallym University. #948-1, Daelim-dong, Youngdeungpo-Ku, Seoul 150-071 Korea.
Tel. 82-2-829-5241 Fax. 82-2-832-1845