

(sylvian fissure) , 1

(callosal tex) (quadrigenal cis - (fast spin echo) T2

cistern), (superior cerebellar cistern), 가 T1 가

(suprasellar cistern), (interpeduncular cistern), (1), 50%

0.34% Maiuri

56 가 50% (2). Truwit

5

1

170/80 (isolated systolic (3). , ,

hypertension) 1 (1).

180/110 가

(3 - 6) Maiuri 가 3.4%

T1 (insular cor - Truwit Barkovich 5%가 44

(7 -

9).

(septum pellucidum) , (cranium bifida),

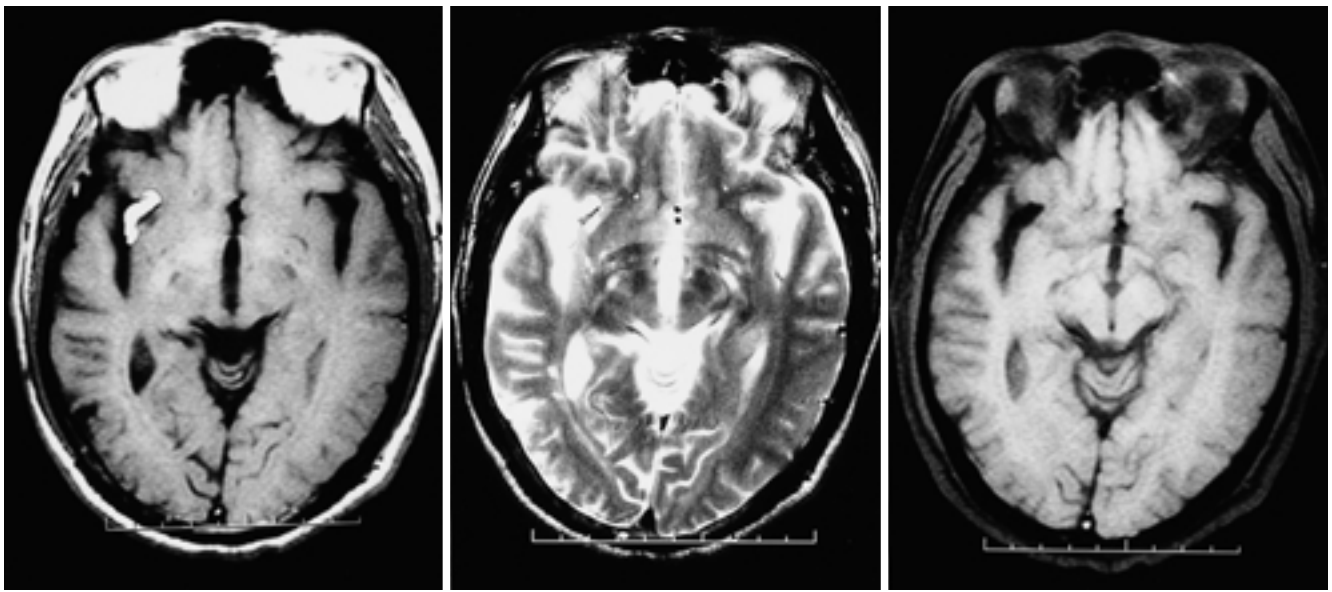


Fig. 1. A 56-year-old man with lipoma of the sylvian fissure.
A. T1-weighted axial MR image shows a curvilinear hyperintense mass deep in the right sylvian fissure. A linear dark signal intensity is noted on the medial aspect of the mass which probably represents a calcific portion.
B. Fast spine echo T2-weighted MR image shows a slightly hyperintense mass in the right sylvian fissure. A linear dark signal intensity is noted on the medial aspect of the mass.
C. T1-weighted image with fat saturation shows signal suppression of the mass in the right sylvian fissure.

(spina bifida),	,	(methemoglobin)	(paramagnetic effect)
,	(3, 9).	가	가
primitiva)	Truwit Barkovich (meninx	T1	T2
Verga 가	(3, 10).		
Saatci	(1) Abe	encoding)	(frequency
	(11).	shift artifact)	(chemical T2
	(auditory hallucination)	가	가
Dyck	(4).	Bakshi	32
		가	2
		(14).	
(chemical ventriculitis)			
	(fat		
fluid level)	(chronic indo -		
lent leak)	(sulcal widening)		
	(15).		

1. Saatci I, Aslan C, Renda, Y, Besim A. Parietal lipoma associated with cortical dysplasia and abnormal vasculature: case report and review of the literature. *AJNR Am J Neuroradiol* 2000;21:1718-1721
2. Maiuri F, Cirillo S, Simonetti L, De Simone MR, Gangemi M. Intracranial lipomas diagnostic and therapeutic considerations. *J*

- Neurosurg Sci* 1988;32:161-167
3. Truswit CL, Barkovich AJ. Pathogenesis of intracranial lipoma : an MR study in 42 patients. *AJR Am J Roentgenol* 1990;155:855-865
 4. Dyck P. Sylvian lipoma causing auditory hallucinations : case report. *Neurosurgery* 1985;16:64-67
 5. Hantashita S, Sakakibara T, Ischii S. Lipoma of the insula : case report. *J Neurosurg* 1983;58:300-302
 6. Maiuri F, Cirillo S, Simonetti L. Lipoma of the sylvian region. *Clin Neurol Neurosurg* 1989;91:321-323
 7. Britt PM, Bindal AK, Balko MG, Yeh HS. Lipoma of the cerebral cortex: case report. *Acta Neurochir* 1993;121:88-92
 8. Fujii Y, Konishi Y, Kriyama M, Hori C, Sudo M. Lipoma on surface of centroparietal lobes. *Pediatr Neurol* 1993;9:144-146
 9. Sasaki H, Yoshida K, Wakamoto H, Otani M, Toya S. Lipomas of the frontal lobe. *Clin Neurol Neurosurg* 1996;98:27-31
 10. Verga P. Lipoma ed osteolipomi della pia mandre. *Tumori* 1929; 15:321-357
 11. Abe T, Singer RJ, Marks MP, et al. Arterial vascular abnormality accompanying cerebral cortical dysplasia. *AJNR Am J Neuroradiol* 1997;18:144-146
 12. Futami K, Kimura A, Yamashita J. Lipoma associated with cerebral saccular aneurysm: case report. *J Neurosurg* 1992;77:640-642
 13. Hadecke J, Buchfelder M, Triebel HJ, Schneyer U. Multiple intracranial lipoma: a case report. *Neurosurg Rev* 1997;20:282-287
 14. Bakshi R, Shaikh ZA, Kamrn S, Kinkel PR. MRI findings in 32 consecutive lipomas using conventional and advanced sequences. *J Neuroimaging* 1999;9:134-140
 15. Smith AS, Benson JE, Blaser SI, Mizushima A, Tarr RW, Bellon EM. Diagnosis of Ruptured intracranial Dermoid cyst: value of MR over CT. *AJNR Am J Neuroradiol* 1991;12:175-180

J Korean Radiol Soc 2002;47:247 - 249

Lipoma of the Sylvian Fissure: A Case Report¹

Noh Hyuck Park, M.D., Jae In Shim, M.D., Kun Seock Yang, M.D.²,
Tae Yeon Rho, M.D.³, Young Hwan Kim, M.D.⁴

¹Department of Diagnostic Radiology, Kyungsang Hospital

²Kyungsan Association Clinic

³Department of Diagnostic Radiology, Taegu Medical Center

⁴Department of Diagnostic Radiology, Kyungpook National University Hospital

Intracranial lipoma usually occurs at or near the midline, predominantly in the callosal cistern and very rarely in the sylvian fissure. We report a case of lipoma of the sylvian fissure without association with other congenital anomaly or vascular abnormality.

Index words : Lipoma and lipomatosis
Brain, MR

Address reprint requests to : Noh Hyuck Park, M.D., Department of Diagnostic Radiology, Kyungsang Hospital,
4-2 Backchon-dong, Kyungsan, Kyungsang Pook-do 712-100, Korea.
Tel. 82-53-812-0113 Fax. 82-53-813-0251