

(hemorrhagic shock and encephalopathy syndrome: HSES)

가  
1  
140 가 (1, 2)  
1  
8.9 g/dl,  $126 \times 10^3/\mu$   
11590/9460 u/l 가 GOT/GPT  
(1-8). 1983 가 , 가  
가 , RSV가  
가 , Reye  
가 , Reye  
10 가 가 , , ,  
(CT)  
(Fig. 1A), 4  
(Fig. 1B). 14  
(MRI)  
80/40 mmHg, 230 - T1  
/ , 68 / , 39.7 . , T2 (Fig.  
1 11.8 1C, 1D). , , ,  
g/dl,  $241 \times 10^3/\mu$  , GOT/GPT가 183/58 u/l  
가 , 46/1.3 ng/dl  
가  
106  $\mu$ g/dl . 3 / 가  
1  
2  
2000 8 26 2001 1 31 13 가 가 ,  
385

19 가  
25

, Reye

(HSES)

(HSES)

(HSES)

(HSES)

가

(1 - 7).  
60%

85% 39

70%

(HSES)

(3).

(1, 3, 5).

(2).

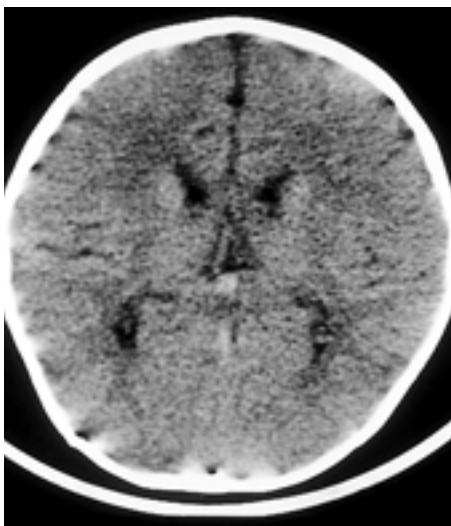
가 (1, 2),

가,

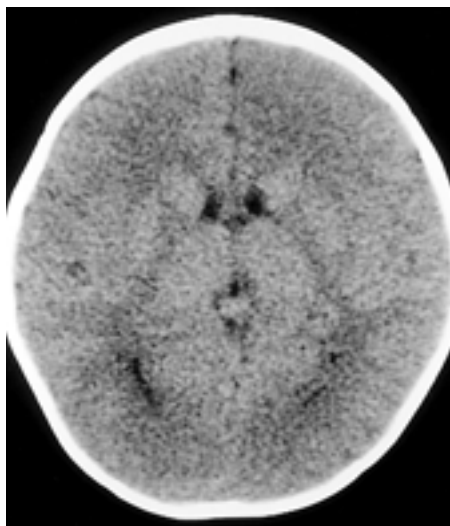
가,

(1).

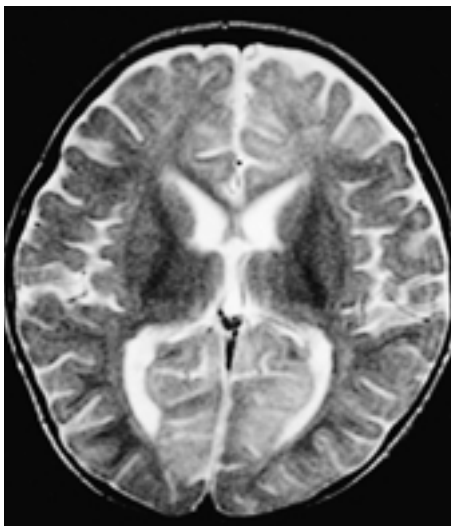
가



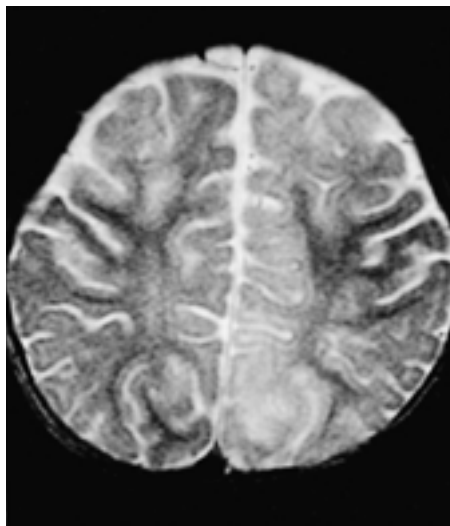
A



B



C



D

**Fig. 1. A.** Precontrast CT scan shows diffuse low attenuation with loss of gray and white matter differentiation.  
**B.** Follow up CT scan shows effacement of superficial sulci, loss of gray and white matter differentiation and small ventricles.  
**C.** Axial T2 weighted MR image shows improved cerebral edema and patchy high signal intensities at the both frontal and the occipital lobes.  
**D.** Axial T2 weighted image at higher level shows patchy high signal intensities at the both frontal and the left parietal lobes.

가

(1).

4

(CT)

가

14

T1

, T2

T1

T2

가

(non - heme iron)

(2),

(HSES)

1. Vles JS, de Vries LS, Wilms G, de Roo M, Casaer PJ. Computed cranial tomography, Magnetic resonance imaging and Single Photon Emission Computed Tomography in Hemorrhagic shock and encephalopathy syndrome: a report of three cases. *Neuropediatrics* 1992;23:24-27
2. Jardine DS, Winters WD, Shaw DW. CT scan abnormalities in a series of patients with hemorrhagic shock and encephalopathy syndrome. *Pediatr Radiol* 1997;27:540-544
3. Little D, Wilkins B. Hemorrhagic shock and encephalopathy syndrome: an unusual cause of sudden death in children. *Am J Forensic Med Pathol* 1997;18(1):79-83
4. Levin M, Pincott JR, Hjelm M, Taylor F, Kay J, Holzel H, Dinwiddie R, Matthew DJ. Hemorrhagic shock and encephalopathy: clinical, pathologic, and biochemical features. *J Pediatr* 1989 Feb;114(2):194-203
5. Sofer S, Yerushalmi B, Shahak E, Berenstein T, Schulman H. Possible aetiology of haemorrhagic shock and encephalopathy syndrome in the Negev area of Israel. *Arch Dis Child* 1996;75(4):332-334
6. Kirschstein M, Aksu F, Tegtmeyer F. Hemorrhagic shock and encephalopathy syndrome in infancy and childhood. *Monatsschr Kinderheilkd* 1991;139(2):105-109
7. Glauser TA, Pachter LM, Zimmerman RA. Abnormal magnetic resonance images in hemorrhagic shock encephalopathy syndrome. *J Child Neurol* 1992;7(4):371-374

## Hemorrhagic Shock and Encephalopathy Syndrome: A Case Report<sup>1</sup>

Sook Ja Yoon, M.D., Yun Sun Choi, M.D., Chung Ho Shin, M.D.<sup>2</sup>, Sung Bum Cho, M.D.,  
Jae Min Cho, M.D., Hyun-Sook Kim, M.D., Tae Il Han, M.D., Yong Kyu Yoon, M.D.

<sup>1</sup>*Department of Radiology, Eulji University School of Medicine*

<sup>2</sup>*Department of Pediatrics, Eulji University School of Medicine*

Hemorrhagic shock and encephalopathy syndrome (HSES) is a sudden-onset symptom complex that involves multisystem failure and includes encephalopathy, shock, coma, convulsions, prerenal azotemia, hepatic dysfunction, and bleeding coagulopathy and progressive thrombocytopenia in previously healthy infants and children. Its radiologic findings have rarely been reported, and it has not been described in Korea. We present a case of clinically diagnosed HSES, and include the CT and MRI findings.

**Index words :** Infants, central nervous system

Brain, diseases

Brain, CT

Brain, MRI

Address reprint requests to : Yun Sun Choi, M.D., Department of Radiology, Eulji Hospital,  
280-1, Hagye 1-dong, Nowon-gu, Seoul 139-231, Korea.  
Tel. 82-2-970-8290 Fax. 82-2-970-8346 E-mail: cys0128@eulji.or.kr