

Eagle : 1 1

. . . 2 . .

Eagle

, 1

Eagle

Eagle (styloid process) (stylohyoid ligament) 가 (Fig. 1E).

Eagle Eagle 1937 3.5 cm 6
Eagle Eagle 3

, Eagle 가 가 가

Eagle 1 CT 가

38 가 Reichert's 2 (Branchial arch)
2-3cm
3cm (1-3, 5). 4%
2 2 가 (2). 4%

가 가 가 가 가 가 (4, 6).

8 cm 가 (Fig. 1A, B). (CT)

(Fig. 1C, D).

가 (3, 5, 7).

1
2
1999 11 30 2000 3 27 가

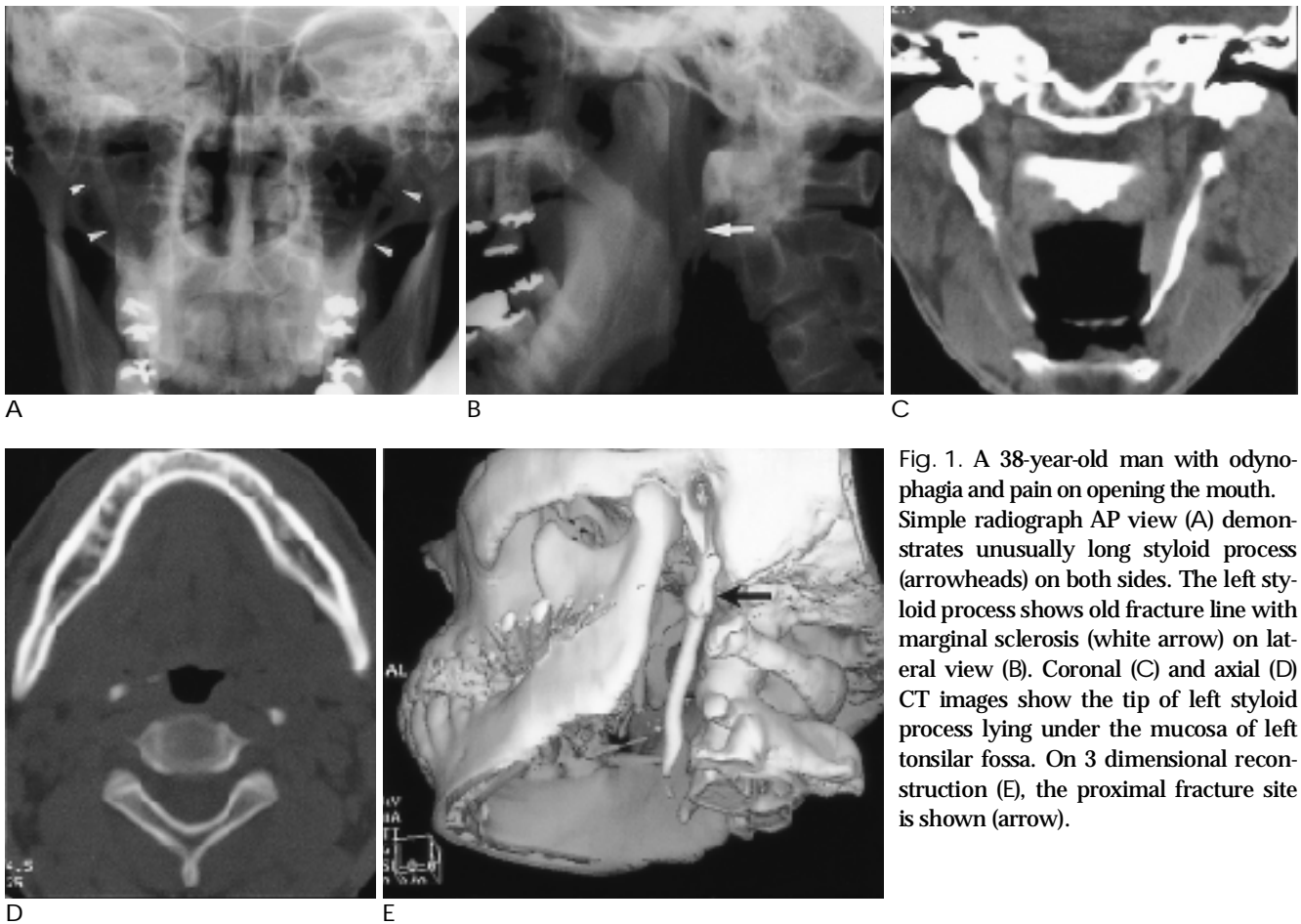


Fig. 1. A 38-year-old man with odynophagia and pain on opening the mouth. Simple radiograph AP view (A) demonstrates unusually long styloid process (arrowheads) on both sides. The left styloid process shows old fracture line with marginal sclerosis (white arrow) on lateral view (B). Coronal (C) and axial (D) CT images show the tip of left styloid process lying under the mucosa of left tonsillar fossa. On 3 dimensional reconstruction (E), the proximal fracture site is shown (arrow).

(3, 5).

(3, 5, 8).

(5-7).

dental panoramic view

(4-7).

가

1. Rath G, Anand C. Abnormal styloid process in a human skull. *Surg Radiol Anat* 1991;13:227-229
2. Eagle WW. Elongated styloid process. *Arch Otolaryngol* 1937;25: 584-7
3. Balbuena L, Hayes D, Ramirez SG, Johnson R. Eagle's Syndrome (Elongated Styloid Process). *South Med J* 1997;90:331-334
4. Chi J, Harkness M. Elongated styloid process: a report of three cases. *no journal found* 1999;95:11-13
5. , . 2 . 1988;31: 486-491
6. , , . 1 . 1990;33:798-801
7. , , , . 1 . 1987;30:795-798
8. Murthy P, Hazarika P, Mathai M, Kumar A, Kamath M. Elongated styloid process: an overview. *no journal found* 1990;19:230-231

Eagle 's Syndrome : A Case Report¹

Eun Young Ko, M.D., Hong-Dae Kim, M.D., Kyung Won Lee, M.D.,
Kyung Hun Yang, M.D.², Ik Yang, M.D., Soo Young Chung, M.D.

¹*Department of Radiology, College of Medicine Hallym University*

²*Department of Otolaryngology, College of Medicine Hallym University*

Eagle 's syndrome is a rare condition associated with recurrent throat pain, foreign body sensation and odynophagia. It is caused by elongation of the styloid process or calcification of the stylohyoid process. We present the clinical and radiologic findings of a case of Eagle 's syndrome.

Index words : Skull, base

Skull, abnormalities

Skull, CT

Address reprint requests to : Eun Young Ko, M.D., Department of Radiology, Kangnam Sacred Heart Hospital, Hallym University
948-1, Daelim-Dong, Youngdeungpo-Ku, Seoul 150-071, Korea.
Tel. 82-2-829-5241 Fax. 82-2-832-1845

가	2000 가	00. 5. 27() 14:00-	7
		00. 4. 29()	
	11 22	00. 6. 9()-10()	KAL
		00. 3. 31() 00. 4. 29() 00. 4. 29()	
	2001 Scholarship	00. 7. 31()	
	2001 Fellowship	00. 7. 31()	
2001	, 2001	00. 9. 30()	
56	56	00. 10. 26()-10. 28()	
	가	00. 7. 31() 00. 7. 31() 00. 9. 15()	
		00. 11. 4()	
86th RSNA	86th RSNA()	00. 11. 26()-12. 1()	Chicago, USA
Imaging Conference		00. 1. 19() 18:00-	()
		00. 2. 16() "	"
		00. 3. 15() "	"
	,	00. 4. 19() "	"
		00. 5. 17() "	"
		00. 6. 21() "	"
		00. 7. 19() "	"
		00. 8. 16() "	"
		00. 9. 20() "	"
		00. 10. 18() "	"
		00. 11. 15() "	"
		00. 12. 20() "	"