

CASE REPORT

Pigmented Trichoblastoma Arising from the Nevus Sebaceous: A Rare Case in Korea

Han Kyoung Cho, M.D., Ji-Sun Song, M.D.¹, Won Hyung Kang, M.D., Byung In Ro, M.D.

Departments of Dermatology and ¹Pathology, Myongji Hospital, Kwandong University College of Medicine, Goyang, Korea

Trichoblastoma is occasionally observed in association with a pre-existing nevus sebaceous in the Korean literature. However, there has been no report on the pigmented type. Herein, we report the first Korean case of a pigmented trichoblastoma arising from the nevus sebaceous on the forehead. A 28-year-old male presented with a dark nodular lesion within a yellowish plaque on the forehead. The surrounding yellowish plaque on the forehead had existed since birth. The central, dark-pigmented nodule began to appear three years ago and enlarged gradually. Histopathologic findings of central pigmented lesion showed heavy melanin deposits within and around the tumor nests. Complete excision was made as treatment. (*Ann Dermatol* 21(4) 406~408, 2009)

-Keywords-

Nevus sebaceous, Pigmented trichoblastoma

INTRODUCTION

Nevus sebaceous is a congenital tumor, usually located on the scalp or face, and presents as an alopecic patch or a slightly elevated yellowish plaque¹⁻³. Various tumors can arise from the nevus sebaceous, including trichoblastoma⁴. Trichoblastoma is primarily located on the head and neck area and usually presents as a solitary, non-ulcerated, skin-colored papule or nodule⁵. Histologically, trichoblastoma is usually classified into several forms according to its cellular arrangement⁶. Cases of non-pig-

mented trichoblastoma from the nevus sebaceous have been reported in Korea^{7,8}, but not for pigmented trichoblastoma. We herein report a case of pigmented trichoblastoma presenting as a nodule on the forehead.

CASE REPORT

A 28-year-old healthy man presented with a dome-shaped, dark-pigmented nodule within a yellowish hairless plaque on the right side of forehead. The plaque had existed since birth. The central, pigmented nodule began to appear three years ago and enlarged gradually. The patient had no personal or family history of cutaneous or internal malignancies. Physical examination of the forehead revealed a 2.0×1.5 cm yellowish, verrucous, hairless plaque. A distinct 0.6×0.5 cm dark pigmented nodule appeared within the yellowish plaque (Fig. 1). A biopsy specimen was taken from the central pigmented nodule. Histopathologic findings of the central pigmented lesion showed a well-circumscribed tumor island located in the dermis without connection to the overlying epidermis.



Fig. 1. A distinct, dark, pigmented nodule developed on the yellowish, verrucous plaque.

Received July 28, 2008, Revised April 8, 2009, Accepted for publication May 11, 2009

Reprint request to: Han Kyoung Cho, M.D., Department of Dermatology, Myongji Hospital, Kwandong University College of Medicine, 697-24, Hwajeong-dong, Deogyang-gu, Goyang 412-270, Korea. Tel: 82-31-810-5415, Fax: 82-31-810-7057, E-mail: dermy@kd.ac.kr

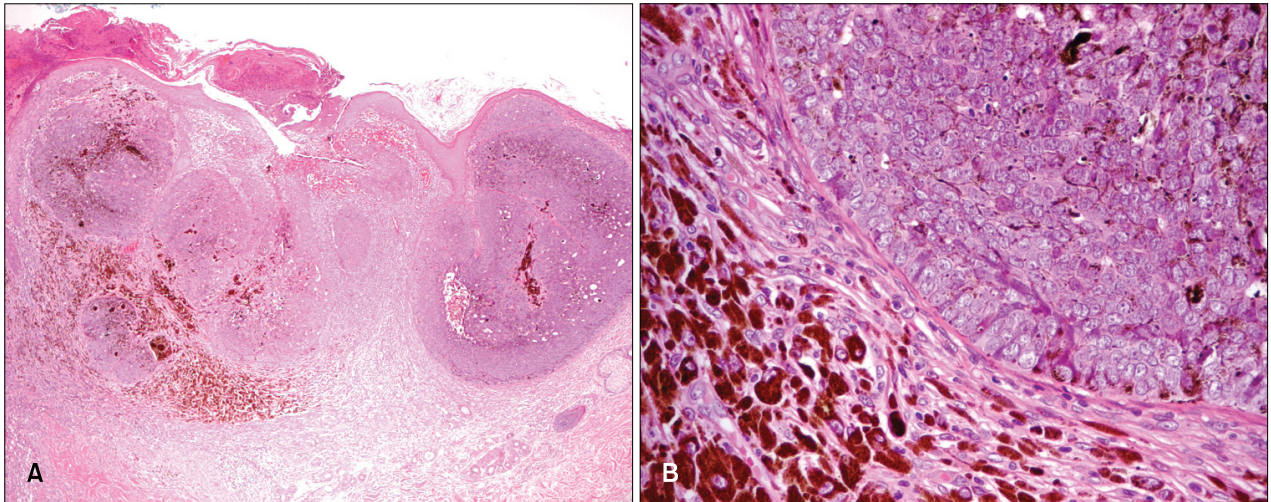


Fig. 2. (A) Low power view showing nodular pigmented tumor nests involving the dermis. Heavy melanin deposits were noted within and around the tumor nests (H&E, $\times 40$). (B) High power view revealed palisading basaloid tumor cells that lack high-grade cytologic atypia and fibrocellular stroma without clefting around the basaloid island (H&E, $\times 400$).

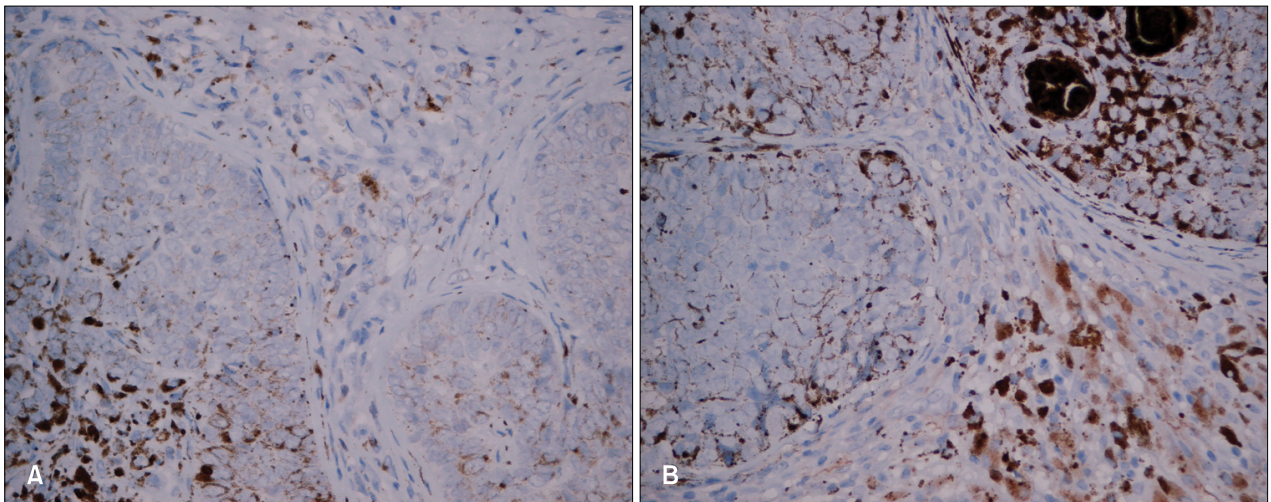


Fig. 3. (A) Tumor cells do not stain with bcl-2 ($\times 400$). (B) Stromal cells around the tumor nests were weakly positive for CD10 ($\times 400$).

Tumor cells were arranged in nodular nests of palisading basaloid cells affecting the dermis and fibrocellular stroma around the basaloid island, but showed lack of high-grade cytologic atypia and no clefting artifact between the basaloid tumor islands and stroma. The lesion showed heavy melanin deposits within and around the tumor nests (Fig. 2). None of tumor cells were immunolabeled with bcl-2 (Fig. 3A), and stromal cells around the tumor nests were weakly positive for CD10 (Fig. 3B). The patient was referred to the plastic surgery department, where he received a total excision. The excised lesion around the pigmented tumor revealed typical histopathologic findings of nevus sebaceous. Therefore, the pathologic diagnosis was

pigmented trichoblastoma arising from the nevus sebaceous.

DISCUSSION

Nevus sebaceous commonly appears as a yellowish patch or plaque at birth or in early childhood. Several benign and malignant tumors can develop from nevus sebaceous¹⁻³, with trichoblastoma and syringocystadenoma papilliferum⁴ the most common benign forms. Trichoblastoma, occurring primarily or secondarily as dermal neoplasm, appear as a solitary, small, non-ulcerated nodule on the scalp or face⁵. Trichoblastoma was described by

Headington in his reviews of hair follicle tumors, including trichoblastoma, trichoblastic fibroma, trichogenic trichoblastoma, and trichogenic myxoma⁹. However, Ackerman's classification is widely accepted now, with trichoblastoma subdivided into five histopathologic patterns: large nodular (including pigmented), small nodular, cribriform, racemiform, and retiform⁶. Thereafter, several less common forms such as adamantinoid, columnar, and rippled-pattern, subcutaneous, and superficial forms were added as variants¹⁰⁻¹³. Pigmented variants of trichoblastoma are very rare and only a few cases have been reported in the literature¹⁴⁻¹⁷. The non-pigmented form of trichoblastoma has been reported in Korea, but not the pigmented form.

The essential histologic findings of trichoblastoma are basaloid proliferation in which the tumor cells are arranged in cords, sheets, or discrete clusters surrounded by fibrous stroma⁶. Pigmented trichoblastoma contains melanin depositions but no significant melanocyte hyperplasia¹⁸. Nodular basal cell carcinoma (BCC) and trichoepithelioma must be differentiated histologically. The present case revealed a fibrocellular stroma around the basaloid tumor cells rather than myxoid stroma and stromal retraction or clefting around basaloid islands, two characteristic histologic features of BCC. This case did not show well-formed horn cysts, a characteristic feature of trichoepithelioma. Here, we report the first Korean case of pigmented trichoblastoma arising from the nevus sebaceous.

REFERENCES

1. Mehregan AH, Pinkus H. Life history of organoid nevi. Special reference to nevus sebaceus of Jadassohn. *Arch Dermatol* 1965;91:574-588.
2. Baker BB, Imber RJ, Templer JW. Nevus sebaceous of Jadassohn. *Arch Otolaryngol* 1975;101:515-516.
3. Shapiro M, Johnson B Jr, Witmer W, Elenitsas R. Spiradenoma arising in a nevus sebaceus of Jadassohn: case report and literature review. *Am J Dermatopathol* 1999;21:462-467.
4. Stavrianeas NG, Katoulis AC, Stratigeas NP, Karagianni IN, Patertou-Stavrianea M, Varelzidis AG. Development of multiple tumors in a sebaceous nevus of Jadassohn. *Dermatology* 1997;195:155-158.
5. Mencia-Gutierrez E, Gutierrez-Diaz E, Ricoy JR, Rodriguez-Peralto JL. Eyelid trichoblastoma: an unusual localization. *Int J Dermatol* 2003;42:201-202.
6. Ackerman AB, Reddy VB, Soyer HP. Trichoblastoma. In: *Neoplasms with follicular differentiation*. 2nd ed. New York: Ardor Scribendi, 2001:405-622.
7. Lee HJ, Choe TJ, Park JG, Ha SJ, Kang SJ, Kim JW. A case of trichoblastoma. *Ann Dermatol* 1999;11:286-288.
8. Kim YJ, Kim MY, Park YM, Kim HO. A case of trichoblastoma. *Ann Dermatol* 2004;16:180-184.
9. Headington JT. Tumors of the hair follicle. A review. *Am J Pathol* 1976;85:479-514.
10. Kaddu S, Schappi H, Kerl H, Soyer HP. Trichoblastoma and sebaceoma in nevus sebaceus. *Am J Dermatopathol* 1999; 21:552-556.
11. Kaddu S, Schaeppi H, Kerl H, Soyer HP. Subcutaneous trichoblastoma. *J Cutan Pathol* 1999;26:490-496.
12. Graham BS, Barr RJ. Rippled-pattern sebaceous trichoblastoma. *J Cutan Pathol* 2000;27:455-459.
13. Ahmed TSS, Priore JD, Seylora JT. Tumors of the epidermal appendages. In: Elder DE, Elenitsas R, Johnson BL Jr, Murphy GF, editors. *Lever's histopathology of the skin*. 10th ed. Philadelphia: Lippincott Williams & Wilkins, 2009:860-862.
14. Aloï F, Tomasini C, Pippione M. Pigmented trichoblastoma. *Am J Dermatopathol* 1992;14:345-349.
15. Ackerman AB. Pigmented trichoblastoma. *Am J Dermatopathol* 1997;19:619.
16. Misago N, Koda H, Narisawa Y. Sebaceous carcinoma, trichoblastoma, and sebaceoma with features of trichoblastoma in nevus sebaceus. *Am J Dermatopathol* 2001;23: 456-462.
17. Bhadani PP, Sharma MC, Agarwal A, Sah SP, Gupta AK. Pigmented trichoblastoma: report of a rare case. *Indian J Pathol Microbiol* 2004;47:253-255.
18. De Giorgi V, Massi D, Trez E, Alfaioli B, Carli P. Multiple pigmented trichoblastomas and syringocystadenoma papilliferum in naevus sebaceous mimicking a malignant melanoma: a clinical dermoscopic-pathological case study. *Br J Dermatol* 2003;149:1067-1070.