

## 대퇴골 과상부 골절에서 슬와 동맥의 가동맥류에 의해 발생한 대퇴부의 후방 구획 증후군 - 1예 보고 -

이 승 준

건국대학교 의과대학 정형외과학교실

대퇴부 구획 증후군은 드물게 보고되고 있으며 일반적으로 전방 구획에 발생하는 것으로 알려져 있다. 그 원인으로는 대퇴골 골절, 근육 타박 및 파열, 근육 과사용, 혈관 손상 등이 알려져 있으나 원위 대퇴부의 후방 구획에 슬와 동맥의 가동맥류에 의해 발생한 대퇴부의 구획 증후군에 대한 보고는 없다. 이에 저자들은 대퇴골 골절에 대하여 역행성 골수강 내 금속정으로 고정을 한 후 슬와 동맥의 가동맥류에 의해 발생한 대퇴부의 후방 구획 증후군을 경험하여 그 임상적 진행 및 결과에 대하여 보고하는 바이다.

색인 단어: 대퇴부, 구획 증후군, 가동맥류

## Posterior Thigh Compartment Syndrome as a Result of Pseudoaneurysm of the Popliteal Artery in the Distal Femoral Fracture - A Case Report -

Seoung Jun Lee, M.D.

Department of Orthopedic Surgery, Konkuk University College of Medicine, Seoul, Korea

Compartment syndrome of the thigh is a rare condition and usually occurs in the anterior compartment. It is frequently caused by muscle injury, femur fracture, muscle overuse and vessel injury, but there have been few reports about posterior thigh compartment syndrome caused by pseudoaneurysm of the popliteal artery after fixation of distal femoral fracture with the retrograde intramedullary nail. We report a case of posterior thigh compartment syndrome caused by pseudoaneurysm of the popliteal artery, and report the clinical progression and result of our case.

**Key Words:** Thigh, Compartment syndrome, Pseudoaneurysm

통신저자 : 이 승 준

4-12

Tel : 02-2030-7360 · Fax : 02-2030-7369  
E-mail : lsjmd@kku.ac.kr

Address reprint requests to : Seoung Jun Lee, M.D.

Department of Orthopedic Surgery, Konkuk University Hospital, 4-12,  
Hwayang-dong, Gwangjin-gu, Seoul 143-701, Korea  
Tel : 82-2-2030-7360 · Fax : 82-2-2030-7369  
E-mail : lsjmd@kku.ac.kr

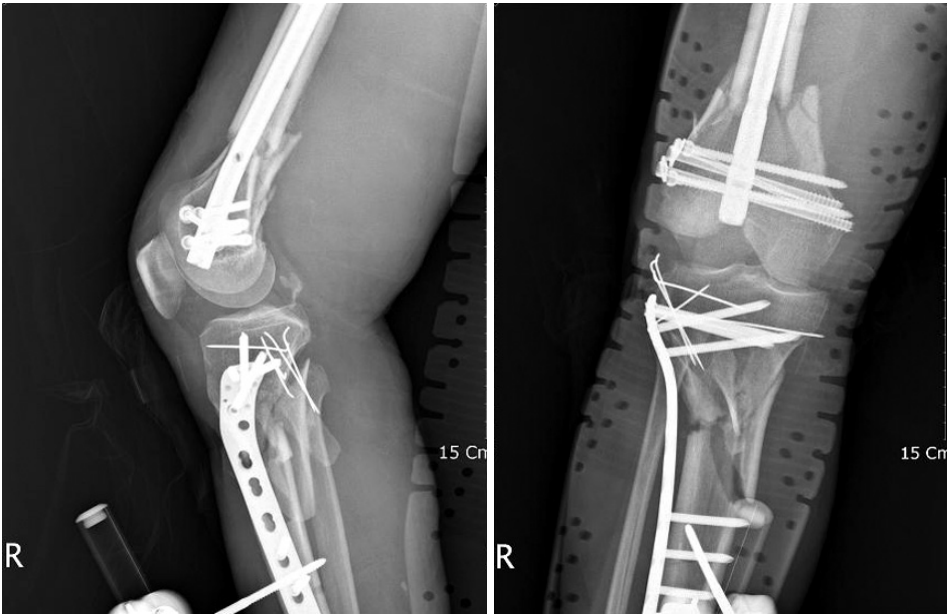
가 , , , , 가 (Fig. 1),  
 1-4,6,9) 가  
 가 (Fig. 2)  
 가  
 3  
 증례 보고 (Fig. 3).  
 3 가 8.7 Hb  
 77 2 가  
 8.0



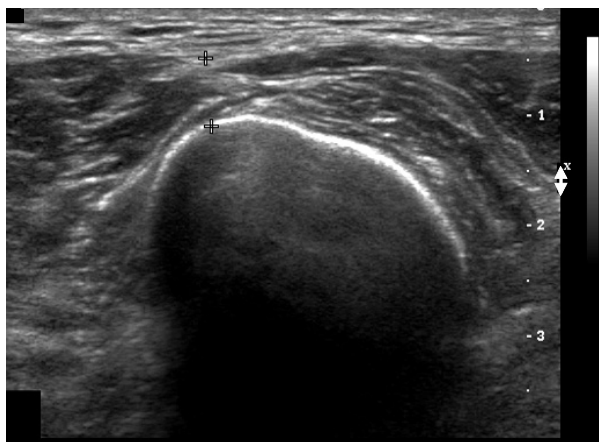
**Fig. 1.** Radiographies made on admission, showing comminuted fracture of the distal femur and proximal tibia.



**Fig. 2.** On the femoral angiogram, posterior tibial and peroneal arteries are not well visualized, but posterior tibial artery is faintly visualized through weak collateral flow.



**Fig. 3.** Postoperative radiographs of the knee joint.



**Fig. 4.** Sonogram shows 10×6 cm mass in the medial aspect of the thigh as like hematoma or abscess.



**Fig. 5.** Angiogram shows snowman appeared pseudoaneurysm in popliteal artery.

- 1) **Allen MJ, Stirling AJ, Crawshaw CV, Barnes MR:** Intracompartmental pressure monitoring of leg injuries. An aid to management. *J Bone Joint Surg Br*, **67**: 53-57, 1985.
- 2) **An HS, Simpson JM, Gale S, Jackson WT:** Acute anterior compartment syndrome in the thigh: a case report and review of the literature. *J Orthop Trauma*, **1**: 180-182, 1987.
- 3) **Ebraheim NA, Hoeflinger MJ, Savolaine ER, Jackson WT:** Anterior compartment syndrome of the thigh as a complication of blunt trauma in a patient on prolonged anticoagulation therapy. *Clin Orthop Relat Res* **263**: 180-184, 1991.

- 4) **Gorman PW, McAndrew MP:** Acute anterior compartmental syndrome of the thigh following contusion. A case report and review of the literature. *J Orthop Trauma*, **1**: 68-70, 1987.
- 5) **Karkos CD, Hughes R, Prasad V, D'Souza SP:** Thigh compartment syndrome as a result of a false aneurysm of the profunda femoris artery complicating fixation of an intertrochanteric fracture. *J Trauma*, **47**: 393-395, 1999.
- 6) **Lindsay MB:** Quadriceps compartment syndrome from minor trauma. *Acad Emerg Med*, **6**: 860-861, 1999.
- 7) **Mubarak SJ, Owen CA, Hargens AR, Garetto LP, Akeson WH:** Acute compartment syndromes: diagnosis and treatment with the aid of the wick catheter. *J Bone Joint Surg Am*, **60**: 1091-1095, 1978.
- 8) **Rooser B, Bengtson S, Hagglund G:** Acute compartment syndrome from anterior thigh muscle contusion: a report of eight cases. *J Orthop Trauma*, **5**: 57-59, 1991.
- 9) **Schwartz JT, Brumback RJ, Lakatos R, Poka A, Bathon GH, Burgess AR:** Acute compartment syndrome of the thigh. A spectrum of injury *J Bone Joint Surg Am*, **71**: 392-400, 1989.
- 10) **Suzuki T, Moirmura N, Kawai K, Sugiyama M:** Arterial injury associated with acute compartment syndrome of the thigh following blunt trauma. *Injury*, **36**: 151-159, 2005.