

Anterior Interbody Fusion and Posterior Instrumentation

Jin Man Wang, M.D.

Professor Emeritus Orthopedic Surgery Ewha Woman's University

Ito(1932)가
Burns(1930)가

5

9)

가 . 1990 Hodgson(1960)⁸⁾

가

2.

172 . 1985 2000 4 1960

3.

Dwyer(1969)⁶⁾

Zielke (1976)¹³⁾가

. Dunn

(1984)⁵⁾

1.

Address reprint requests to

Jin Man Wang, M.D.

Orthopedic Surgery Ewha University Hospital

70, 6-Ka, Chong Ro Ku, Seoul, Korea.

Tel: 82-2-760-5130, Fax: 82-2-762-3985

- 80~100% 50%
 . Cloward(1952)³⁾ PLIF 30% 가 .
 가 1990 가 .
 (stem cell therapy)가 가
 4. Harrington(1962)⁷⁾
 Luque(1982)¹⁰⁾ sublaminar wire L 7.
 Cotrel Dubousset(1984)⁴⁾ (anterior column)
 (mid column)가 70~80%
 20~30% (posterior column)가 .
 80~90%
 (polyaxial) , ()
 가 가
 (1300 N)
 5. White Panjabi¹²⁾
 Bagby(1985)²⁾ stainless basket ,
 BAK, cage mesh .
 가 , 가 (Fig. 1).
 6. () ,
 가 가 ,

Table 1. Summary of spinal surgery (1984. 3.~2000. 4.)

	Post.fusion Post. instrument.	Ant. fusion Post. Instrument.	Other Procedure	Total
spondylolisthesis	54	40	34	128
spondylolysis	15	10	9	34
spinal stenosis	86	35	118	239
seg. instability	34	22	21	11
fracture				
C-spine			19	19
T-spine	31	12		43
L-spine	77	34	10	121
tbc Spine	41	19	121	181
HNP			581	581
Other disease			152	152
Total	338	172	106	1575

8.

1575

1984 3

2000 4

172

2) (35), (22) (Fig. 3),
(46), (19)

(

7~14

(50) (Fig.

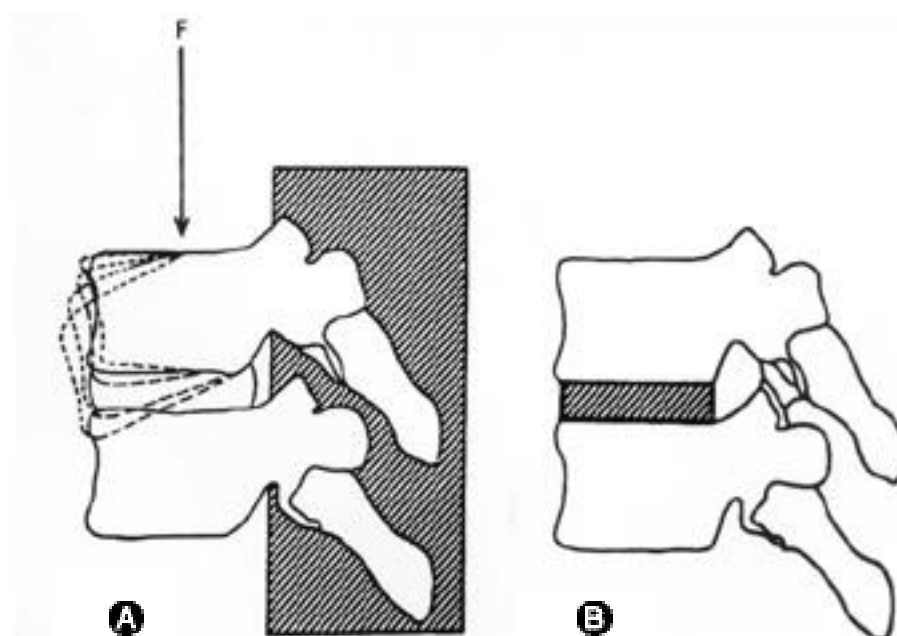


Fig. 1. (A) Constant elastic motions in the anterior part of motion segment even in solid posterior fusion (B) Anterior interbody fusion eliminate elastic motion by taking out disc.

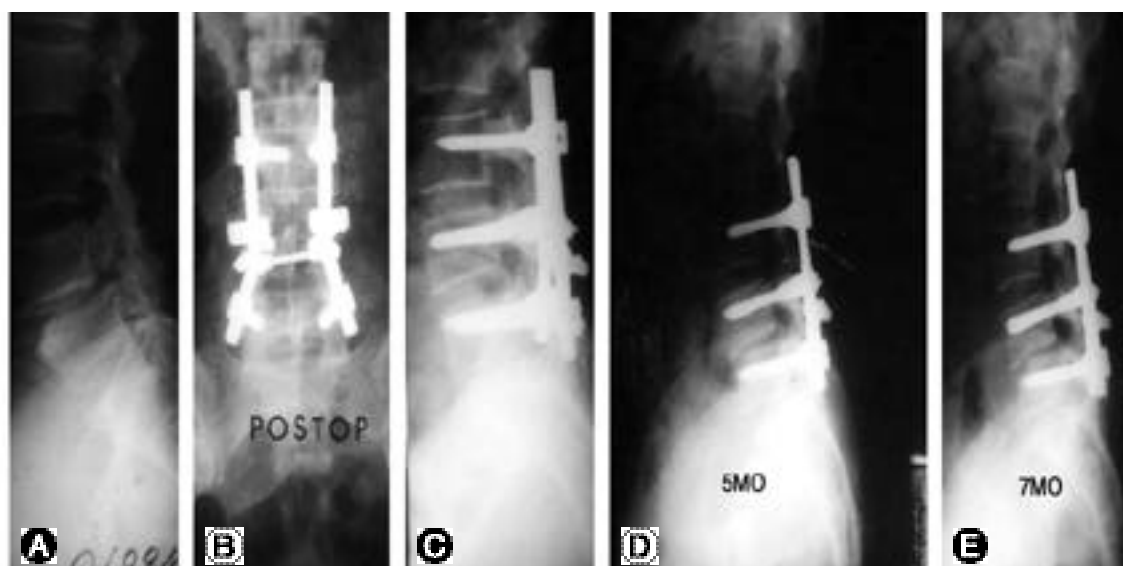


Fig. 2. (A) Preoperative radiography of 54 year old female under the diagnosis of isthmic spondylolisthesis. (B, C) Postoperative radiography of the posterolateral fusion and posterior instrumentation (D, E) Postoperative radiography in 5 and 7 month of interval with gradual flexion deformity

110
 338 17%
 (angular, translatory) 13%
 (Fig. 4).
 1994 1996
 21 cage
 Journal of Spinal Disorder
 30.4 21 20
 20
 . 16
 . 13
 1 . 2

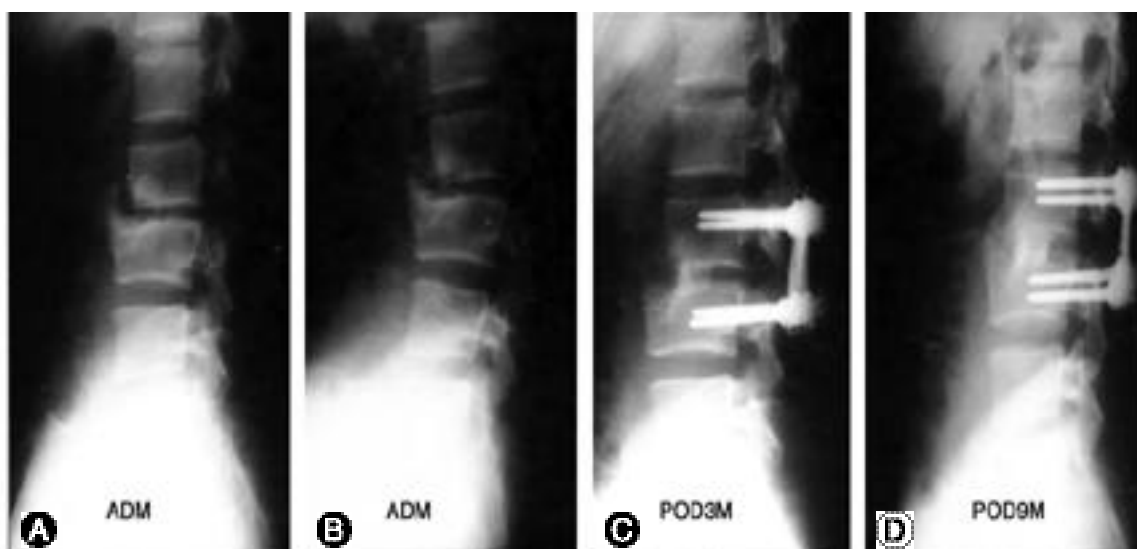


Fig. 3. (A, B) This 18 year old male had back pain and limit of spinal motion due to segmental instability. (C, D) Postoperative 3month & 6month of lateral radiography shows complete fusion of anterior interbody fusion with good sagittal balance.

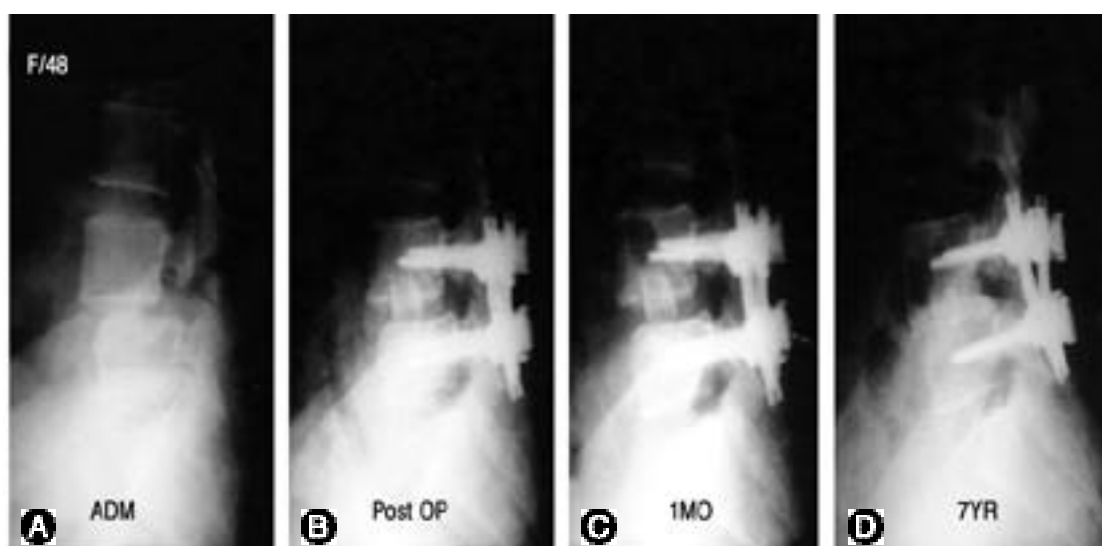


Fig. 4. (A) Preoperative radiography of 48 year old female under the diagnosis of isthmic spondylolisthesis. (B) Postoperative radiography of the L 4-5 by doing posterior instrumentation and anterior interbody fusion. (C, D) Postoperative radiography 1 month and 7years follow up with complete full width fusion of L4-5 disc.

- 1.
 - 2.
 - 3.
-
- 1) , :
 , 1:233-239,1994.
 - 2) **Bagby GW**: Arthrodesis by the distraction - compression using a stainless implant. *Orthopedics*, 11:931-933,1988.
 - 3) **Cloward RB**: The treatment of ruptured intervertebral disc by vertebral body fusion. *Ann Surg*, 136:987,1952.
 - 4) **Cotrel Y and DuBousset J**: New segmental posterior instrumentation of the spine. *Proceedings at the 19th Annual Meeting of the Scoliosis Research Society, Orlando, 1984*.
 - 5) **Dunn HK**: Anterior stabilization of thoracolumbar injuries. *Clin Orthop*, 189:116-124,1984.
 - 6) **Dwyer AF, Newton NC, Sherwood AA**: An anterior approach to scoliosis. *Clin Orthop*, 62:192-202,1969.
 - 7) **Harrington PR**: Surgical instrumentation for management of scoliosis. *J Bone Joint Surg*, 42-A:1448,1960.
 - 8) **Hodgson AR, Stock FE, Fang HSY and Ong GB**: Anterior spinal fusion :The operative approach and pathologic findings in 412 patients with Pott's disease of the spine. *Br J Surg*, 48:172-178,1960.
 - 9) **John W. Frymoyer**: *The adult spine principle and practice*, Lippincott. Raven, 3-40, 1997.
 - 10) **Luque ER**: The anatomic basis and development of segmental spinal instrumentation *Spine*, 7:256-259,1982.
 - 11) **Wang JM, Kim DJ and Yun YH**: Posterior pedicular screw instrumentation and anterior interbody fusion in adult lumbar spondylolysis or Grade I spondylolisthesis with segmental instability, *J Spinal Disorder*, 9:83-8.1996.
 - 12) **White AA and Panjabi MM**: Biomechanical considerations in the surgical management of the spine.(in White AA and panjabi MM eds, *Clinical biomechanics of the spine*, 2nd ed. Philadelphia. JB Lippincott:511-634,1990.)
 - 13) **Zielke K, Stunkat R and Beaujean F**: Ventral derotation spondylodesis. *Arch Orthop Trauma Surg*, 85:257-260,1976.