

Original Article
Neuroscience



OPEN ACCESS

Received: May 27, 2018

Accepted: Aug 12, 2018

Address for Correspondence:

Jong-Min Kim, MD

Department of Neurology, Seoul National University Bundang Hospital, Seoul National University College of Medicine, 82 Gumi-ro, 173-beon-gil, Bundang-gu, Seongnam 13620, Republic of Korea.

E-mail: jongmin1@snu.ac.kr

© 2018 The Korean Academy of Medical Sciences.

This is an Open Access article distributed under the terms of the Creative Commons Attribution Non-Commercial License (<https://creativecommons.org/licenses/by-nc/4.0/>) which permits unrestricted non-commercial use, distribution, and reproduction in any medium, provided the original work is properly cited.

ORCID iDs

Kyeong Joon Kim

<https://orcid.org/0000-0003-1911-8220>

Yun Jung Bae

<https://orcid.org/0000-0002-1779-4949>

Jong-Min Kim

<https://orcid.org/0000-0001-5723-3997>

Beom Joon Kim

<https://orcid.org/0000-0002-2719-3012>

Eung Seok Oh

<https://orcid.org/0000-0003-2068-3235>

Ji Young Yun

<https://orcid.org/0000-0001-9648-9450>

Ji Seon Kim

<https://orcid.org/0000-0002-8117-5114>

Han-Joon Kim

<https://orcid.org/0000-0001-8219-9663>

The Prevalence of Cerebral Microbleeds in Non-Demented Parkinson's Disease Patients

Kyeong Joon Kim ¹, Yun Jung Bae ², Jong-Min Kim ³, Beom Joon Kim ³, Eung Seok Oh ⁴, Ji Young Yun ⁵, Ji Seon Kim ⁶, and Han-Joon Kim ³

¹Department of Neurology, Dongguk University Ilsan Hospital, Goyang, Korea

²Department of Radiology, Seoul National University Bundang Hospital, Seoul National University Hospital, Seoul National University College of Medicine, Seongnam, Korea

³Department of Neurology, Seoul National University Bundang Hospital, Seoul National University Hospital, Seoul National University College of Medicine, Seongnam, Korea

⁴Department of Neurology, Chungnam National University Hospital, Chungnam National University College of Medicine, Daejeon, Korea

⁵Department of Neurology, Ewha Womans University Mokdong Hospital, Ewha Womans University College of Medicine, Seoul, Korea

⁶Department of Neurology, Chungbuk National University Hospital, Chungbuk National University College of Medicine, Cheongju, Korea

ABSTRACT

Background: Cerebral microbleeds (CMBs) are associated with cerebrovascular risk factors and cognitive dysfunction among patients with Parkinson's disease (PD). However, whether CMBs themselves are associated with PD is to be elucidated.

Methods: We analyzed the presence of CMBs using 3-Tesla brain magnetic resonance imaging in non-demented patients with PD and in age-, sex-, and hypertension-matched control subjects. PD patients were classified according to their motor subtypes: tremor-dominant, intermediate, and postural instability-gait disturbance (PIGD). Other cerebrovascular risk factors and small vessel disease (SVD) burdens were also evaluated.

Results: Two-hundred and five patients with PD and 205 control subjects were included. The prevalence of CMBs was higher in PD patients than in controls (16.1% vs. 8.8%; odds ratio [OR], 2.126; $P = 0.019$); CMBs in the lobar area showed a significant difference between PD patients and controls (11.7% vs. 5.9%; OR, 2.234; $P = 0.032$). According to the motor subtype, CMBs in those with PIGD type showed significant difference from controls with respect to the overall brain area (21.1% vs. 8.9%; OR, 2.759; $P = 0.010$) and lobar area (14.6% vs. 4.9%; OR, 3.336; $P = 0.016$). Among PD patients, those with CMBs had higher age and more evidence of SVDs than those without CMBs.

Conclusion: We found that CMBs are more frequent in PD patients than in controls, especially in those with the PIGD subtype and CMBs on the lobar area. Further study investigating the pathogenetic significance of CMBs is required.

Keywords: Cerebral Microbleeds; Parkinson's Disease; Synucleinopathy; Amyloid Angiopathy

Disclosure

The authors have no potential conflicts of interest to disclose.

Author Contributions

Conceptualization: Kim KJ, Kim JM. Data curation: Kim KJ, Kim JM. Formal analysis: Kim KJ, Bae YJ. Methodology: Kim KJ, Kim JM. Writing - original draft: Kim KJ, Bae YJ, Kim JM, Kim BJ, Oh ES, Yun JY, Kim JS, Kim HJ. Writing - review & editing: Kim KJ, Bae YJ, Kim JM, Kim BJ, Oh ES, Yun JY, Kim JS, Kim HJ.

INTRODUCTION

Cerebral microbleeds (CMBs) are small brain hemorrhages with tiny focal points of low-intensity detected in T2-weighted gradient-recalled echo or susceptibility-weighted magnetic resonance imaging (MRI).¹ Histologically, CMBs are focal leakages of hemosiderin from small vessels affected by lipohyalinosis or arteries affected by amyloid deposition.^{1,2} CMBs are associated with cerebrovascular risk factors (age, hypertension, and diabetes),^{3,4} and they are frequently discovered in patients with hemorrhagic or ischemic stroke, as well as in those with cognitive dysfunction, including mild cognitive impairment or Alzheimer's disease.⁵

These associations have also been reported in patients with Parkinson's disease (PD). Older age and white matter changes were associated with CMBs in PD patients.⁶ Moreover, CMBs were more commonly observed in patients with PD dementia than cognitively normal PD patients or cognitively normal control subjects.^{7,8} However, a direct association between CMBs and PD, especially without cognitive dysfunction, has not been fully elucidated to date. Hence, in this study, we investigated the association between CMBs and PD by making a comparison of the prevalence, number, and location of CMBs between non-demented PD patients and control subjects who were matched for age, sex, and hypertension.

METHODS**Participants**

We enrolled newly diagnosed PD patients without dementia between October 2010 and March 2016 in our movement disorders unit at Seoul National University Bundang Hospital, which is a tertiary, nationwide referral-based hospital. Patients undergoing brain imaging studies, including 3-Tesla brain MRI and ¹²³I-2β-carbomethoxy-3β-(4-iodophenyl)-N-(3-fluoropropyl)-nortropane single photon emission computerized tomography (¹²³I-FP-CIT SPECT) imaging, were followed up by an experienced movement specialist. Based on regular follow-up and neuroimaging studies, clinical diagnosis of PD was made according to the diagnostic criteria.⁹ After the initial clinical diagnosis and neuroimaging, follow-up care was continued in all patients. In this study, we included PD patients without dementia. All PD patients were screened for cognitive function by detailed history taking, Korean version of mini-mental state examination (K-MMSE), and Korean version of Montreal cognitive assessment (K-MoCA). Patients without subjective cognitive dysfunction via history taking, and those with scores within the normal range (K-MMSE score higher than -1 standard deviation below the mean of normative value, K-MoCA score above the cutoff value of mild cognitive impairment) were included for final analysis.^{10,11}

For comparison, age-, sex-, and hypertension-matched subjects with no signs of neurological disorders were randomly selected from a pool of 9,106 health-check examinees who underwent brain MRI as a part of a routine health-check examination at our hospital during the same period.

Classification of PD subtypes

All PD patients were measured using Unified Parkinson's Disease Rating Scale (UPDRS) and Hoehn and Yahr stage (HY stage) at the time of neuroimaging, and the postural instability gait scores and tremor scores were calculated. Postural instability gait scores were calculated

by the mean score of 5 items: history of falling, freezing, and difficulty walking, as well as exam results of gait and postural instability. Tremor scores were calculated by the mean score of 9 items: history of right and left arm tremor, resting tremor of head (face, lips, or chin), all 4 limbs, as well as exam results of action or postural tremor in both arms. The tremor dominant (TD) group was defined as patients with a ratio of mean tremor score/mean postural instability gait score greater than or equal to 1.5; the postural instability-gait disturbance (PIGD) group included all patients with a ratio of less than or equal to 1.0; and the rest were defined as intermediate.¹²

Clinical information regarding vascular risk factors

Hypertension was diagnosed using the criteria and methodology set by the Joint National Committee on Prevention, Detection, Evaluation, and Treatment of High Blood Pressure (a consistent average of two or more blood pressure measurements on two or more visits, systolic blood pressure ≥ 140 mmHg and/or diastolic blood pressure ≥ 90 mmHg), history of treated hypertension, or current antihypertensive therapy.¹³ Diabetes mellitus was diagnosed using the standard criteria (hemoglobin A1c $\geq 6.5\%$, fasting plasma glucose ≥ 126 mg/dL, or postprandial 2-hour plasma glucose ≥ 200 mg/dL), history of treated diabetes mellitus, or current anti-diabetic medications.¹⁴ Hyperlipidemia was defined as elevated plasma cholesterol ≥ 240 mg/dL, history of treated hyperlipidemia, or current lipid-lowering therapy.¹⁵ Prior history of ischemic heart disease and stroke was obtained from history taking and the past medical record. Body mass index (BMI) was calculated as body weight in kilogram divided by the square of height in meters. We collected the subjects' smoking history as non-smoker, ex-smoker, or current smoker.

Imaging protocol

MRI was performed at 3-Tesla (Achieva and Ingenia; Philips Healthcare, Best, the Netherlands) using a 32-channel sensitivity encoding (SENSE) head coil. Patients underwent axial T2-weighted imaging (T2-WI), axial fluid-attenuated inversion recovery (FLAIR) imaging, and T2*-gradient recalled echo (T2*-GRE) imaging. The parameters for MRI were as follows: T2-WI, repetition time (TR) 3,000 msec, echo time (TE) 80 msec, field-of-view (FOV) 185 mm \times 230 mm, acquisition matrix 400 \times 320, slice thickness 5 mm; FLAIR, TR 11,000 msec, TE 125 msec, inversion time 2.5 sec, FOV 185 mm \times 230 mm, acquisition matrix 370 \times 260, slice thickness 5 mm; and T2*-GRE, TR 800 msec, TE 18 msec, flip angle (FA) 23 degree, FOV 185 mm \times 230 mm, acquisition matrix 256 \times 256, slice thickness 5 mm.

MRI analysis

Two readers, who were blinded to the clinical information, independently assessed all MRIs; the presence of CMBs and small vessel disease (SVD) burden were measured (**Fig. 1**). CMBs were defined as small (3 to 10 mm), homogeneous, round foci of low signal intensity on GRE images in the cortico-subcortical junction, basal ganglia, thalamus, brainstem, and cerebellum. CMB-mimics—calcium and iron deposits in the basal ganglia, flow voids of blood vessels, volume artifact, and cavernous malformation—were excluded.¹⁶ The locations of CMBs were as follows: lobar area, including cortical and subcortical areas of the frontal, temporal, parietal, and occipital lobes; deep area, including basal ganglia and thalamus; and infratentorial area, including the brainstem and cerebellum.

The presences of lacunes, white matter hyperintensities (WMH), and perivascular spaces were measured, and SVD burden on MRI was scored on a scale from 0 to 4 (SVD score), according to the presence of the following: presence of one or more CMBs in GRE images,

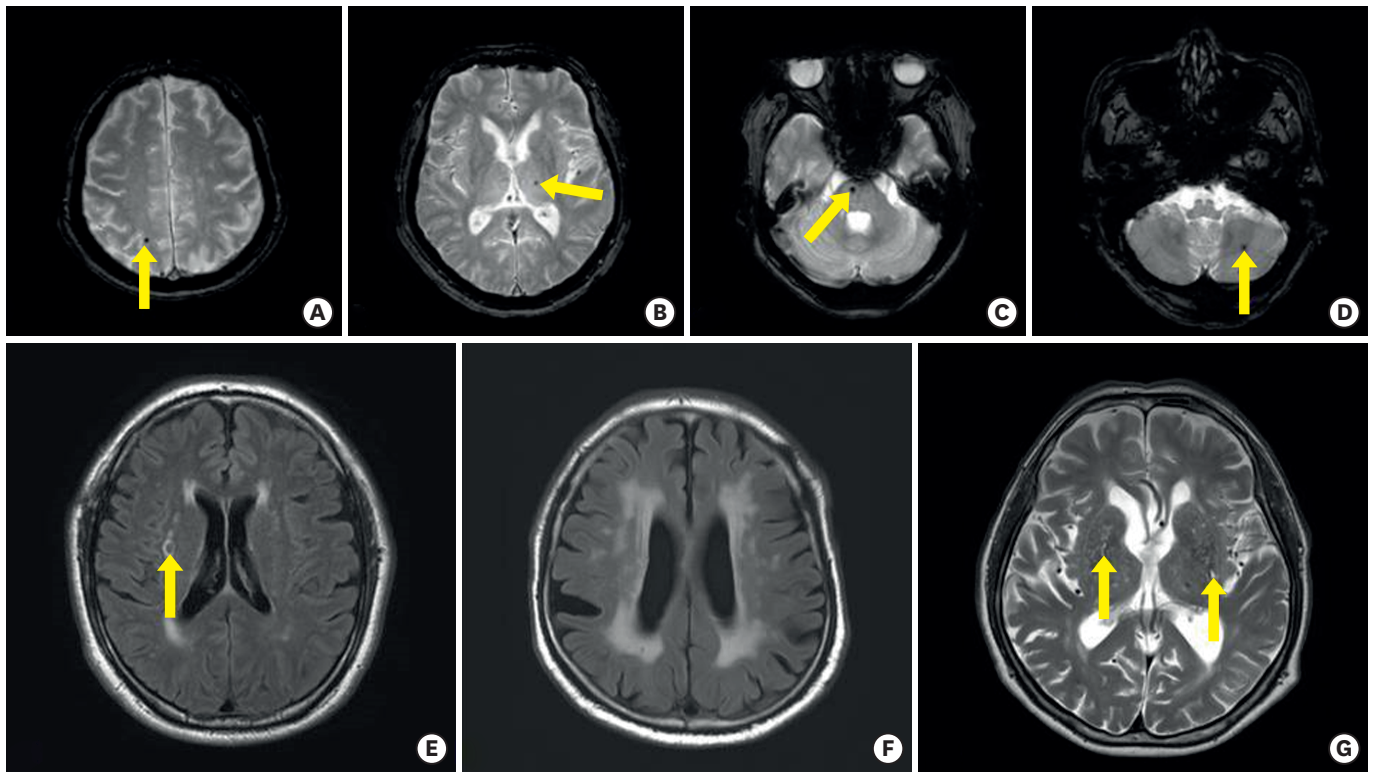


Fig. 1. CMBs and other features for SVD score. **(A-D)** The presence of one or more CMBs scored 1 point in the SVD score. **(A)** The CMBs, located in high right parietal cortex, **(B)** left thalamus, **(C)** right pons, and **(D)** left cerebellum, are indicated by arrows. **(E-G)** In addition to the CMBs, each of the following; **(E)** existence of lacunes (indicated by the arrow), **(F)** white matter changes with periventricular Fazekas scale 3 and/or deep white matter Fazekas scale from 2 to 3, and **(G)** moderate-to-severe perivascular spaces (indicated by arrows) in the basal ganglia, earned 1 point in the SVD score. CMB = cerebral microbleed, SVD = small vessel disease.

presence of one or more lacunes, presence of confluent deep WMH (Fazekas score 2 or 3) or irregular periventricular WMH extending into the deep white matter (Fazekas score 3) in FLAIR images, and presence of moderate-to-severe (grade 2 to 4) periventricular space in the basal ganglia in T2-WI.¹⁷⁻¹⁹ The SVD score on 3 of the 4 items—except CMB score—was also measured.

Statistical analysis

The clinical findings were compared using Student's t-test, one-way analysis of variance, and χ^2 test for parametric data. Mann-Whitney U test, Kruskal-Wallis test, and Fisher's exact test were used for non-parametric data. Bonferroni correction was used for multiple comparison analyses. Binary logistic regression was used to estimate the odds ratio (OR) adjusted for age, sex and hypertension. The inter-observer agreement was tested using Cohen's κ statistics. *P* values of less than 0.05 were considered statistically significant. Statistical analyses were performed using SPSS software (version 22.0; SPSS, Chicago, IL, USA).

Ethics statement

The study protocol was approved by the Institutional Review Board (IRB) of Seoul National University Bundang Hospital (IRB No. B-1610/368-303), and informed consent was obtained from the patients for use of publication.

RESULTS

Clinical characteristics of the subjects

A total of 1,214 patients were diagnosed with PD during the study period. Among them, 205 (114 men and 91 women) PD patients, including 123 PIGD, 56 TD, and 26 intermediate subtypes, showed preserved cognitive function during the screening process, and were eligible for the study (Table 1). All PD patients showed a decreased uptake of the unilateral or bilateral putamen in ^{123}I -FP-CIT SPECT.

There were no significant differences in the clinical characteristics between PD patients and control subjects, except a higher SVD score in those with the PIGD subtype compared with the controls. In a comparison among PD subtypes, PIGD showed higher mean age, progressed periventricular WMH, higher SVD score, UPDRS score, and HY stage than the other subtypes (Supplementary Table 1).

Table 1. Clinical characteristics of PD patients and control subjects

Group	All PD patients (n = 205)	All control subjects (n = 205)	P value	PIGD (n = 123)	Control for PIGD (n = 123)	P value
Age, yr	64.0 ± 9.5	64.0 ± 9.5	1.000	65.9 ± 9.0	65.9 ± 9.0	1.000
Sex, M/F	114/91	114/91	1.000	67/56 (54.5/45.5)	67/56 (54.5/45.5)	1.000
Hypertension	124 (39.5)	124 (39.5)	1.000	58 (47.2)	58 (47.2)	1.000
Diabetes mellitus	22 (10.7)	22 (10.7)	1.000	14 (11.4)	13 (10.6)	1.000
Hyperlipidemia	35 (17.1)	27 (13.2)	0.335	20 (16.3)	18 (14.6)	0.860
History of stroke	4 (2.0)	4 (2.0)	1.000	3 (2.4)	1 (0.8)	0.622
History of ischemic heart disease	4 (2.0)	6 (2.9)	0.751	3 (2.4)	3 (2.4)	1.000
Smoking			0.502			0.550
Current smoker	21 (10.2)	29 (14.1)		12 (9.8)	19 (15.4)	
Ex-smoker	30 (14.6)	31 (15.1)		19 (15.4)	19 (15.4)	
Non-smoker	154 (75.1)	145 (70.7)		92 (74.8)	85 (69.1)	
BMI	24.0 ± 3.5	23.8 ± 3.7	0.655	23.9 ± 3.7	23.9 ± 3.9	0.960
Lacunes on MRI	12 (5.9)	13 (6.3)	1.000	9 (7.3)	6 (4.9)	0.596
Fazeka scale						
Deep white matter			0.433			0.171
0	44 (21.5)	49 (23.9)		22 (17.9)	29 (23.6)	
1	127 (62.0)	128 (62.4)		75 (61.0)	76 (61.8)	
2	33 (16.1)	26 (12.7)		25 (20.3)	16 (13.0)	
3	1 (0.5)	2 (1.0)		1 (0.8)	2 (1.6)	
Periventricular white matter			0.725			0.605
0	51 (24.9)	42 (20.5)		29 (23.6)	20 (16.3)	
1	111 (54.1)	119 (58.0)		56 (45.5)	75 (61.0)	
2	37 (18.0)	43 (21.0)		32 (26.0)	27 (22.0)	
3	6 (2.9)	1 (0.5)		6 (4.9)	1 (0.8)	
SVD score	0.58 ± 0.93	0.47 ± 0.81	0.214	0.77 ± 1.02	0.46 ± 0.77	0.007
SVD score minus CMBs score ^a	0.41 ± 0.79	0.38 ± 0.70	0.642	0.56 ± 0.86	0.37 ± 0.67	0.048
UPDRS	15.3 ± 7.0			16.5 ± 6.8		
HY stage	1.88 ± 0.64			2.09 ± 0.60		
K-MMSE	27.8 ± 2.1			27.5 ± 2.3		
K-MoCA	26.0 ± 2.9			25.6 ± 3.3		
Education, yr	12.6 ± 4.6			11.9 ± 5.1		
Disease duration, mon	20.9 ± 22.4			21.4 ± 24.2		

Data are presented as means ± standard deviation (range) or number (%).

PD = Parkinson's disease, PIGD = postural instability-gait disturbance, BMI = body mass index, MRI = magnetic resonance imaging, SVD = small vessel disease, UPDRS = Unified Parkinson's Disease Rating Scale, HY stage = Hoehn and Yahr stage, K-MMSE = Korean version of mini-mental state examination, K-MoCA = Korean version of Montreal cognitive assessment, CMB = cerebral microbleed.

^aAs the presence of CMBs is a component of SVD score, the score which subtracted CMBs score from the SVD score is presented.

Table 2. Existence of CMBs in PD patients and control subjects

Group	All PD patients (n = 205)	All control subjects (n = 205)	P value, OR (95% CI)	PIGD (n = 123)	Control for PI GD (n = 123)	P value, OR (95% CI)
CMBs, overall	33 (16.1)	18 (8.8)	0.019, 2.126 (1.134–3.985)	26 (21.1)	11 (8.9)	0.010, 2.759 (1.270–5.992)
CMBs, lobar	24 (11.7)	12 (5.9)	0.032, 2.234 (1.071–4.658)	18 (14.6)	6 (4.9)	0.016, 3.336 (1.253–8.877)
CMBs, deep	6 (2.9) (BG only 3, Thalamus only 4, both 1)	5 (2.4) (BG only 4, Thalamus only 2, both 1)	0.718, 1.251 (0.371–4.222)	5 (4.1)	4 (3.3)	0.817, 1.174 (0.304–4.538)
CMBs, infratentorial	7 (3.4)	3 (1.5)	0.184, 2.559 (0.640–10.239)	6 (4.9)	2 (1.6)	0.176, 3.104 (0.603–15.983)
No. of CMBs in the subjects with CMBs	1.85 ± 1.58	1.44 ± 0.70	0.31	2.04 ± 1.73	1.55 ± 0.69	0.739

Data are presented as means ± standard deviation (range) or number (%).

CMB = cerebral microbleed, PD = Parkinson's disease, OR = odds ratio, CI = confidence interval, PI GD = postural instability-gait disturbance, BG = basal ganglia.

CMBs among subjects

Among 410 subjects, (205 patients and 205 controls), 51 subjects were determined to have CMBs. The initial inter-observer agreement with respect to the presence of CMBs was 97.2% ($\kappa = 0.87$; $P < 0.001$). CMBs were more frequently found in PD patients (33 out of 205, 16.1%) than in controls (18 out of 205, 8.8%), with an adjusted OR of 2.126 (Table 2); the PI GD subtype accounted for most of the difference (21.1% vs. 8.9%, with an adjusted OR of 2.759). Regarding the location of CMBs, there was a significant difference only in the lobar area (OR of 2.234; $P = 0.032$) between PD patients and controls; no significant difference was found in other locations. The PI GD subtype showed the same result as the entire PD-patient group. CMBs in patients with TD and intermediate subtypes were not different from controls (Supplementary Table 2). In comparisons among the PD subtypes, CMBs seemed to appear in PI GD type more frequently than in other subtypes, without statistical significance. The mean numbers of CMBs in CMB-positive subjects were not different between PD patients and controls, and in between PD subtypes.

Vascular risk factors and MRI features according to CMBs

We compared the vascular risk factors, MRI features, and clinical profiles among PD patients—particularly between those with and without CMBs (Table 3). PD patients with CMBs, compared with those without CMBs, showed a greater frequency in hypertension, greater intensity of WMHs in the deep white matter, higher HY stage, and higher SVD scores, with or without microbleeds score. We also made the same comparisons between PD patients with lobar CMBs and those with CMBs only in the deep or infratentorial areas. We found no significant differences.

DISCUSSION

In this study, we found that the prevalence of CMBs was higher in PD patients, especially in those with the PI GD subtype, than control subjects matched for age, sex, and hypertension. This difference may mostly be attributed to lobar CMBs, as there were no significant differences with respect to the CMBs in other areas between PD patients and controls. Among PD patients, the PI GD subtype seemed to show a higher frequency of CMBs than the other subtypes; however, this was without statistical significance. This study reports a higher frequency of CMBs in non-demented PD patients compared with control subjects.

Table 3. Clinical characteristics of PD patients according to microbleeds or lobar microbleeds

Group	PD with CMBs (n = 33)	PD without CMBs (n = 172)	P value	PD with lobar CMBs (+) (n = 24)	PD with non-lobar CMBs only (n = 9)	P value
Age, yr	66.6 ± 8.4	63.5 ± 9.7	0.088	65.0 ± 8.4	70.7 ± 7.0	0.054
Sex, M/F	12/21 (63.6/36.4)	93/79 (54.1/45.9)	0.344	17/7 (70.8/29.2)	4/5 (44.4/55.6)	0.230
Hypertension	20/33 (60.6)	61/172 (35.5)	0.011	15/24 (62.5)	5/9 (55.6)	1.000
Diabetes mellitus	5/33 (15.2)	17/172 (9.9)	0.363	4/24 (16.7)	1/9 (11.1)	1.000
Hyperlipidemia	4/33 (12.1)	31/141 (18.0)	0.613	2/24 (8.3)	2/9 (22.2)	0.295
History of stroke	0/33 (0.0)	4/172 (2.3)	1.000	0/24 (0.0)	0/9 (0.0)	NA
History of ischemic heart disease	0/33 (0.0)	4/172 (2.3)	1.000	0/24 (0.0)	0/9 (0.0)	NA
Smoking			0.596			0.090
Current smoker	3/33 (9.1)	18/172 (10.5)		3 (12.5)	0 (0.0)	
Ex-smoker	4/33 (12.1)	26/172 (15.1)		4 (16.7)	0 (0.0)	
Non-smoker	26/33 (78.8)	128/172 (74.4)		17 (70.8)	9 (100.0)	
BMI	25.0 ± 3.5	23.9 ± 3.5	0.106	25.1 ± 3.7	24.7 ± 3.0	0.766
Lacunes on MRI	3/33 (9.1)	9/172 (5.2)	0.414	2/24 (8.3)	1/9 (11.1)	1.000
Fazeka scale						
Deep white matter			0.011			0.610
0	4 (12.1)	40 (23.3)		3 (12.5)	1 (11.1)	
1	19 (57.6)	108 (62.8)		13 (54.2)	6 (66.7)	
2	9 (27.3)	24 (14.0)		7 (29.2)	2 (22.2)	
3	1 (3.0)	0 (0.0)		1 (4.2)	0 (0.0)	
Periventricular white matter			0.172			0.480
0	9 (27.3)	42 (24.4)		6 (25.0)	3 (33.3)	
1	12 (36.4)	99 (57.6)		11 (45.8)	1 (11.1)	
2	10 (30.3)	27 (15.7)		6 (25.0)	4 (44.4)	
3	2 (6.1)	4 (2.3)		1 (4.2)	1 (11.1)	
SVD score	1.79 ± 0.93	0.34 ± 0.74	< 0.001	1.79 ± 0.98	1.78 ± 0.83	0.921
SVD score minus CMBs score ^a	0.79 ± 0.93	0.34 ± 0.74	0.012	0.79 ± 0.98	0.78 ± 0.83	0.921
UPDRS	17.3 ± 8.1	14.9 ± 6.8	0.075	16.5 ± 6.9	19.3 ± 10.8	0.433
HY stage	1.80 ± 0.59	1.60 ± 0.52	0.048	1.69 ± 0.53	2.11 ± 0.65	0.131
K-MMSE	27.1 ± 2.7	27.8 ± 2.0	0.065	27.5 ± 2.5	26.0 ± 3.2	0.121
K-MoCA	25.1 ± 4.2	26.2 ± 2.6	0.149	25.9 ± 3.2	23.1 ± 5.8	0.246
Education, yr	12.2 ± 5.8	12.7 ± 4.4	0.575	12.8 ± 5.3	10.6 ± 7.2	0.619
Disease duration, mon	22.1 ± 19.8	20.6 ± 22.9	0.722	24.4 ± 22.4	16.0 ± 8.2	0.592

Data are presented as means ± standard deviation (range) or number (%).

PD = Parkinson's disease, CMB = cerebral microbleed, BMI = body mass index, MRI = magnetic resonance imaging, SVD = small vessel disease, UPDRS = Unified Parkinson's Disease Rating Scale, HY stage = Hoehn and Yahr stage, K-MMSE = Korean version of mini-mental state examination, K-MoCA = Korean version of Montreal cognitive assessment, NA = not applicable.

^aAs the presence of CMBs is a component of SVD score, the score which subtracted CMBs score from the SVD score is presented.

CMBs have various pathologic features and different patterns of etiology, depending on their location. Lobar CMBs tend to be associated with amyloid burden, while deep or infratentorial CMBs are made from lipohyalinosis and tend to be associated with hypertensive disease or vascular risk factors.^{5,20} Based on this pathophysiologic difference, it is possible to assert that patients with PD might have advanced degree of amyloid pathology than controls, although CMBs were only found in a portion of PD patients. In particular, patients with the PIGD subtype showed a significantly higher frequency of CMBs than controls. This implies that the degree of amyloid pathology may be different depending on the motor subtype.

The association between amyloid deposition and cognitive impairment in PD patients has been well established.²¹ To date, a direct association between amyloid pathology and synucleinopathy has not been determined, despite the promotion of alpha-synuclein aggregation by the beta-amyloid peptides in a previous experimental study.²² Rather, it would be reasonable to consider amyloid pathology and synucleinopathy as products of a certain pathologic process.

Inflammation may provide an explanation of the relationship between amyloid pathology and synucleinopathy. Inflammatory responses seem to have an influence on amyloid angiopathy. Amyloid deposits activate complement and inflammatory cytokines, causing microglial activation and neuronal damages.²³ Accumulation of amyloid deposits could also cause cerebrovascular constriction, which seems to be mediated via pro-inflammatory mechanism with a production of vasoactive eicosanoids (prostaglandin E2 and F2 α).²⁴ Such inflammatory processes might influence the formation of CMBs. Previously, proinflammatory cytokines were increased in subjects with CMBs (both in lobar and deep areas) compared with those without CMBs,²⁵ and cortical microbleeds were shown to cause inflammatory responses in the brains of mice.²⁶

Furthermore, inflammation can also explain the neurodegeneration in PD patients.²⁷ In postmortem studies of PD, astrocytosis, microgliosis, and lymphocyte infiltration were found in the substantia nigra.^{28,29} Moreover, proinflammatory cytokines were increased in the substantia, striatum, and cerebrospinal fluid of patients with PD.³⁰ These findings support the notion that inflammation may be an important process for the development of PD.

This study has several limitations. First, we were unable to examine the cognitive function in greater detail than using K-MMSE and K-MoCA. However, we applied the strictest inclusion criteria using K-MMSE and K-MoCA to determine preserved cognitive function; hence, our study population could be regarded as free from dementia. Second, although the prevalence of CMBs in the PIGD subtype of PD was more than twice of that in other subtypes, which might reflect a difference in a pathologic process according to the manifestation of PD, we were unable to find a significant difference in the prevalence of CMBs among PD subtypes. This might be due to the small number of subjects in our study. Further study is needed with larger number of subjects in the future. Third, we did not evaluate the presence of orthostatic hypotension or apolipoprotein E genotype, which are risk factors of CMBs in PD.^{5,31} Finally, our study was based on MRI analysis, thus further study using pathological confirmation should be done.

In summary, we found that CMBs—especially in the lobar areas—were more frequent in patients with the PIGD subtype of PD than the controls with similar vascular risk factors. Future study investigating the role of CMBs is needed.

SUPPLEMENTARY MATERIALS

Supplementary Table 1

Clinical characteristics of PD patients classified by subtypes and control subjects

[Click here to view](#)

Supplementary Table 2

Existence of CMBs in PD patients classified by subtypes and control subjects

[Click here to view](#)

REFERENCES

1. Fazekas F, Kleinert R, Roob G, Kleinert G, Kapeller P, Schmidt R, et al. Histopathologic analysis of foci of signal loss on gradient-echo T2*-weighted MR images in patients with spontaneous intracerebral hemorrhage: evidence of microangiopathy-related microbleeds. *AJNR Am J Neuroradiol* 1999;20(4):637-42. [PUBMED](#)
2. Jeerakathil T, Wolf PA, Beiser A, Hald JK, Au R, Kase CS, et al. Cerebral microbleeds: prevalence and associations with cardiovascular risk factors in the Framingham Study. *Stroke* 2004;35(8):1831-5. [PUBMED](#) | [CROSSREF](#)
3. Roob G, Schmidt R, Kapeller P, Lechner A, Hartung HP, Fazekas F. MRI evidence of past cerebral microbleeds in a healthy elderly population. *Neurology* 1999;52(5):991-4. [PUBMED](#) | [CROSSREF](#)
4. Tanaka A, Ueno Y, Nakayama Y, Takano K, Takebayashi S. Small chronic hemorrhages and ischemic lesions in association with spontaneous intracerebral hematomas. *Stroke* 1999;30(8):1637-42. [PUBMED](#) | [CROSSREF](#)
5. Yates PA, Villemagne VL, Ellis KA, Desmond PM, Masters CL, Rowe CC. Cerebral microbleeds: a review of clinical, genetic, and neuroimaging associations. *Front Neurol* 2014;4:205. [PUBMED](#) | [CROSSREF](#)
6. Kim JH, Park J, Kim YH, Ma HI, Kim YJ. Characterization of cerebral microbleeds in idiopathic Parkinson's disease. *Eur J Neurol* 2015;22(2):377-83. [PUBMED](#) | [CROSSREF](#)
7. Ham JH, Yi H, Sunwoo MK, Hong JY, Sohn YH, Lee PH. Cerebral microbleeds in patients with Parkinson's disease. *J Neurol* 2014;261(8):1628-35. [PUBMED](#) | [CROSSREF](#)
8. Kim SW, Chung SJ, Oh YS, Yoon JH, Sunwoo MK, Hong JY, et al. Cerebral microbleeds in patients with dementia with Lewy bodies and Parkinson disease dementia. *AJNR Am J Neuroradiol* 2015;36(9):1642-7. [PUBMED](#) | [CROSSREF](#)
9. Hughes AJ, Daniel SE, Kilford L, Lees AJ. Accuracy of clinical diagnosis of idiopathic Parkinson's disease: a clinico-pathological study of 100 cases. *J Neurol Neurosurg Psychiatry* 1992;55(3):181-4. [PUBMED](#) | [CROSSREF](#)
10. Han C, Jo SA, Jo I, Kim E, Park MH, Kang Y. An adaptation of the Korean mini-mental state examination (K-MMSE) in elderly Koreans: demographic influence and population-based norms (the AGE study). *Arch Gerontol Geriatr* 2008;47(3):302-10. [PUBMED](#) | [CROSSREF](#)
11. Kim JI, Sunwoo MK, Sohn YH, Lee PH, Hong JY. The MMSE and MoCA for screening cognitive impairment in less educated patients with Parkinson's disease. *J Mov Disord* 2016;9(3):152-9. [PUBMED](#) | [CROSSREF](#)
12. Jankovic J, McDermott M, Carter J, Gauthier S, Goetz C, Golbe L, et al. Variable expression of Parkinson's disease: a base-line analysis of the DATATOP cohort. *Neurology* 1990;40(10):1529-34. [PUBMED](#) | [CROSSREF](#)
13. Chobanian AV, Bakris GL, Black HR, Cushman WC, Green LA, Izzo JL Jr, et al. The seventh report of the Joint National Committee on prevention, detection, evaluation, and treatment of high blood pressure: the JNC 7 report. *JAMA* 2003;289(19):2560-72. [PUBMED](#) | [CROSSREF](#)
14. American Diabetes Association. Diagnosis and classification of diabetes mellitus. *Diabetes Care* 2014;37 Suppl 1:S81-90. [PUBMED](#) | [CROSSREF](#)
15. National Cholesterol Education Program (NCEP) Expert Panel on Detection, Evaluation, and Treatment of High Blood Cholesterol in Adults (Adult Treatment Panel III). Third Report of the National Cholesterol Education Program (NCEP) Expert Panel on Detection, Evaluation, and Treatment of High Blood Cholesterol in Adults (Adult Treatment Panel III) final report. *Circulation* 2002;106(25):3143-421. [PUBMED](#) | [CROSSREF](#)
16. Greenberg SM, Vernooij MW, Cordonnier C, Viswanathan A, Al-Shahi Salman R, Warach S, et al. Cerebral microbleeds: a guide to detection and interpretation. *Lancet Neurol* 2009;8(2):165-74. [PUBMED](#) | [CROSSREF](#)
17. Wardlaw JM, Smith C, Dichgans M. Mechanisms of sporadic cerebral small vessel disease: insights from neuroimaging. *Lancet Neurol* 2013;12(5):483-97. [PUBMED](#) | [CROSSREF](#)

18. Fazekas F, Chawluk JB, Alavi A, Hurtig HI, Zimmerman RA. MR signal abnormalities at 1.5 T in Alzheimer's dementia and normal aging. *AJR Am J Roentgenol* 1987;149(2):351-6.
[PUBMED](#) | [CROSSREF](#)
19. Staals J, Makin SD, Doubal FN, Dennis MS, Wardlaw JM. Stroke subtype, vascular risk factors, and total MRI brain small-vessel disease burden. *Neurology* 2014;83(14):1228-34.
[PUBMED](#) | [CROSSREF](#)
20. Shoamanesh A, Kwok CS, Benavente O. Cerebral microbleeds: histopathological correlation of neuroimaging. *Cerebrovasc Dis* 2011;32(6):528-34.
[PUBMED](#) | [CROSSREF](#)
21. Petrou M, Dwamena BA, Foerster BR, MacEachern MP, Bohnen NI, Müller ML, et al. Amyloid deposition in Parkinson's disease and cognitive impairment: a systematic review. *Mov Disord* 2015;30(7):928-35.
[PUBMED](#) | [CROSSREF](#)
22. Masliah E, Rockenstein E, Veinbergs I, Sagara Y, Mallory M, Hashimoto M, et al. Beta-amyloid peptides enhance alpha-synuclein accumulation and neuronal deficits in a transgenic mouse model linking Alzheimer's disease and Parkinson's disease. *Proc Natl Acad Sci U S A* 2001;98(21):12245-50.
[PUBMED](#) | [CROSSREF](#)
23. Mrak RE, Griffin WS. Glia and their cytokines in progression of neurodegeneration. *Neurobiol Aging* 2005;26(3):349-54.
[PUBMED](#) | [CROSSREF](#)
24. Townsend KP, Obregon D, Quadros A, Patel N, Volmar C, Paris D, et al. Proinflammatory and vasoactive effects of Abeta in the cerebrovasculature. *Ann N Y Acad Sci* 2002;977(1):65-76.
[PUBMED](#) | [CROSSREF](#)
25. Shoamanesh A, Preis SR, Beiser AS, Vasan RS, Benjamin EJ, Kase CS, et al. Inflammatory biomarkers, cerebral microbleeds, and small vessel disease: Framingham Heart Study. *Neurology* 2015;84(8):825-32.
[PUBMED](#) | [CROSSREF](#)
26. Rosidi NL, Zhou J, Pattanaik S, Wang P, Jin W, Brophy M, et al. Cortical microhemorrhages cause local inflammation but do not trigger widespread dendrite degeneration. *PLoS One* 2011;6(10):e26612.
[PUBMED](#) | [CROSSREF](#)
27. Hirsch EC, Jenner P, Przedborski S. Pathogenesis of Parkinson's disease. *Mov Disord* 2013;28(1):24-30.
[PUBMED](#) | [CROSSREF](#)
28. Przedborski S. Neuroinflammation and Parkinson's disease. *Handb Clin Neurol* 2007;83:535-51.
[PUBMED](#) | [CROSSREF](#)
29. Hirsch EC, Hunot S. Neuroinflammation in Parkinson's disease: a target for neuroprotection? *Lancet Neurol* 2009;8(4):382-97.
[PUBMED](#) | [CROSSREF](#)
30. Nagatsu T, Mogi M, Ichinose H, Togari A. Changes in cytokines and neurotrophins in Parkinson's disease. *J Neural Transm Suppl* 2000;(60):277-90.
[PUBMED](#)
31. Yamashiro K, Tanaka R, Hoshino Y, Hatano T, Nishioka K, Hattori N. The prevalence and risk factors of cerebral microbleeds in patients with Parkinson's disease. *Parkinsonism Relat Disord* 2015;21(9):1076-81.
[PUBMED](#) | [CROSSREF](#)