

Original Article



OPEN ACCESS

Received: Mar 9, 2017

Revised: May 2, 2017

Accepted: Jun 6, 2017

Correspondence to

Dong-Ju Choi, MD, PhD

Cardiovascular Center, Seoul National University Bundang Hospital, Seoul National University College of Medicine, 82, Gumi-ro 173-beon-gil, Bundang-gu, Seongnam 13620, Korea.

Tel: +82-31-787-7007

Fax: +82-31-787-7041

E-mail: djchoi@snuh.org

*Chan Soon Park and Jin Joo Park contributed equally to this work.

Copyright © 2017. The Korean Society of Cardiology

This is an Open Access article distributed under the terms of the Creative Commons Attribution Non-Commercial License (<https://creativecommons.org/licenses/by-nc/4.0>) which permits unrestricted noncommercial use, distribution, and reproduction in any medium, provided the original work is properly cited.

ORCID iDs

Chan Soon Park

<https://orcid.org/0000-0003-1717-6662>

Jin Joo Park

<https://orcid.org/0000-0001-9611-1490>

Il-Young Oh

<https://orcid.org/0000-0002-5584-605X>

Chang-Hwan Yoon

<https://orcid.org/0000-0001-6305-4442>

Dong-Ju Choi

<https://orcid.org/0000-0003-0146-2189>

Relation of Renal Function with Left Ventricular Systolic Function and NT-proBNP Level and Its Prognostic Implication in Heart Failure with Preserved versus Reduced Ejection Fraction: an analysis from the Korean Heart Failure (KorHF) Registry

Chan Soon Park , MD^{1,10,*}, Jin Joo Park , MD^{1,*}, Il-Young Oh , MD¹, Chang-Hwan Yoon , MD¹, Dong-Ju Choi , MD, PhD¹, Hyun-Ah Park , MD², Seok-Min Kang , MD³, Byung-Su Yoo , MD⁴, Eun-Seok Jeon , MD⁵, Jae-Joong Kim , MD⁶, Myeong-Chan Cho , MD⁷, Shung Chull Chae , MD⁸, Kyu-Hyung Ryu , MD⁹, Byung-Hee Oh , MD¹⁰, and on behalf of the KorHF Investigators

¹Department of Internal Medicine, Seoul National University College of Medicine, Seoul National University Bundang Hospital, Seongnam, Korea

²Department of Family Medicine, Seoul Paik Hospital, Inje University College of Medicine, Seoul, Korea

³Division of Cardiology, Yonsei University Severance Hospital, Seoul, Korea

⁴Division of Cardiology, Yonsei University Wonju Severance Christian Hospital, Wonju, Korea

⁵Department of Internal Medicine, Sungkyunkwan University College of Medicine, Samsung Medical Center, Seoul, Korea

⁶Department of Internal Medicine, Asan Medical Center, University of Ulsan College of Medicine, Seoul, Korea

⁷Department of Internal Medicine, Chungbuk National University College of Medicine, Cheongju, Korea

⁸Department of Internal Medicine, Kyungpook National University College of Medicine, Daegu, Korea

⁹Department of Internal Medicine, Hallym University Dongtan Sacred Heart Hospital, Hwaseong, Korea






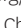



¹⁰Department of Internal Medicine, Seoul National University College of Medicine, Seoul National University Hospital, Seoul, Korea

ABSTRACT

Background and Objectives: The relationship between ejection fraction (EF), N-terminal pro-brain natriuretic peptide (NT-proBNP) levels and renal function is unknown as stratified by heart failure (HF) type. We investigated their relation and the prognostic value of renal function in heart failure with preserved ejection fraction (HFpEF) vs. reduced ejection fraction (HFrEF).

Materials and Methods: NT-proBNP, glomerular filtration rate (GFR), and EF were obtained in 1,932 acute heart failure (AHF) patients. HFrEF was defined as EF<50%, and renal dysfunction as GFR<60 mL/min/1.73 m² (mild renal dysfunction: 30≤GFR<60 mL/min/1.73 m²; severe renal dysfunction: GFR<30 mL/min/1.73 m²). The primary outcome was 12-month all-cause death.

Results: There was an inverse correlation between GFR and log NT-proBNP level ($r=-0.298$, $p<0.001$), and between EF and log NT-proBNP ($r=-0.238$, $p<0.001$), but no correlation between EF and GFR ($r=0.017$, $p=0.458$). Interestingly, the prevalence of renal dysfunction did not differ between HFpEF and HFrEF (49% vs. 52%, $p=0.210$). Patients with renal

Hyun-Ah Park 
<https://orcid.org/0000-0003-2343-8964>
 Seok-Min Kang 
<https://orcid.org/0000-0001-9856-9227>
 Byung-Su Yoo 
<https://orcid.org/0000-0002-3395-4279>
 Eun-Seok Jeon 
<https://orcid.org/0000-0002-9946-5611>
 Jae-Joong Kim 
<https://orcid.org/0000-0002-2714-2282>
 Myeong-Chan Cho 
<https://orcid.org/0000-0002-0047-0227>
 Shung Chull Chae 
<https://orcid.org/0000-0002-9871-6976>
 Kyu-Hyung Ryu 
<https://orcid.org/0000-0001-9329-2716>
 Byung-Hee Oh 
<https://orcid.org/0000-0002-9945-4306>

Conflict of Interest

The authors have no financial conflicts of interest.

dysfunction had higher 12-month mortality in both HFpEF (7.9% vs. 15.2%, log-rank $p=0.008$) and HFrEF (8.6% vs. 16.8%, log-rank $p<0.001$). Multivariate analysis showed severe renal dysfunction was an independent predictor of 12-month mortality (hazard ratio [HR], 2.08; 95% confidence interval [CI], 1.40–3.11). When stratified according to EF: the prognostic value of severe renal dysfunction was attenuated in HFpEF patients (HR, 1.46; 95% CI, 0.66–3.21) contrary to HFrEF patients (HR, 2.43; 95% CI, 1.52–3.89).

Conclusion: In AHF patients, the prevalence of renal dysfunction did not differ between HFpEF and HFrEF patients. However, the prognostic value of renal dysfunction was attenuated in HFpEF patients.

Keywords: Renal dysfunction; Ejection fraction; Pro-brain natriuretic peptide (1-76); Prognosis; Heart failure

INTRODUCTION

Heart failure (HF) is the leading cause of death and hospital admission in the United States and worldwide including Korea. Its incidence and prevalence are increasing, and it has a substantial mortality and morbidity rate.¹⁻³⁾

There exist bidirectional interactions between heart and kidney, and clinical conditions in which either the diseased kidney or heart makes the other organ dysfunctional; this is defined as cardio-renal syndrome (CRS). The proposed mechanisms include neurohormonal (i.e., autonomous nerve system, renin-angiotensin-aldosterone system, and natriuretic peptide system), and hemodynamic factors (i.e., arterial pressure and venous congestion).⁴⁾

N-terminal pro-brain natriuretic peptide (NT-proBNP) is a biomarker used to evaluate the degree of neurohormonal activation.⁵⁾⁶⁾ Patients with HF with reduced ejection fraction (HFrEF) have higher NT-proBNP levels than those with preserved ejection fraction (HFpEF) suggesting they have different degrees of neurohormonal activation.⁷⁾⁸⁾ Considering that NT-proBNP reflects the level of neurohormonal activation and patients with HFrEF had higher levels of NT-proBNP, the prevalence and prognostic value of renal dysfunction may be dependent on the type of HF.

In this study, we first investigated the relationship of renal function with left ventricular (LV) systolic function, and NT-proBNP level. Second, we examined the prevalence and prognostic value of renal dysfunction in HFpEF vs. HFrEF.

MATERIALS AND METHODS

Patients and data collection

The Korean Heart Failure (KorHF) Registry is a prospective multicenter registry designed to reflect the real-world clinical data of Korean patients admitted for acute heart failure (AHF). The study design and the primary results of the KorHF registry have been published elsewhere.⁹⁾

The registry was founded in June 2004 and is supported by the Korean Society of Heart Failure. Twenty-four well-qualified centers participated in the registry. All consecutive patients

hospitalized with an episode of AHF as the primary reason for admission were eligible for enrolment. HF was diagnosed at admission according to the Framingham criteria.¹⁰⁾

Patients with new-onset (*de novo*) AHF as well as those with acutely decompensated HF (ADHF) were included. ADHF was defined as worsening of HF in patients with a previous diagnosis or hospitalization for HF. New-onset AHF was defined as AHF in patients with no previous history of HF. A confirmed diagnosis of HF at discharge was also required. All patients were strongly recommended for follow-up assessments for at least 1 year, and follow-up outcome data including mortality and re-hospitalization because of HF, were prospectively collected using medical records and by telephone contact. The mean observational period was 1.7 years (range, 0.1–4.9 years), from June 2004 to April 2009. The institutional review board or ethics committee at each participating hospital approved the study protocol and patients gave written informed consent before study entry. The investigation conformed to the principles outlined in the Declaration of Helsinki.

For laboratory tests, leukocytes, hemoglobin, blood urea nitrogen (BUN), creatinine (Cr), serum sodium, troponin I, and NT-proBNP levels measured at admission were collected for the registry. Blood sampling and tests were conducted as routine practice by laboratories at each center certified by The Korean Association of Quality Assurance for Clinical Laboratory. Patients underwent echocardiographs during hospitalization for AHF. Estimated glomerular filtration rate (eGFR) was calculated from Cr values using the modification of diet in renal disease (MDRD) formula.¹¹⁾ Preserved renal function and renal dysfunction were defined as $\text{GFR} \geq 60 \text{ mL/min/1.73 m}^2$ and $\text{GFR} < 60 \text{ mL/min/1.73 m}^2$, respectively. Patients with renal dysfunction were further classified as mild ($30 \leq \text{GFR} < 60 \text{ mL/min/1.73 m}^2$) and severe renal dysfunction ($< 30 \text{ mL/min/1.73 m}^2$). HFpEF and HFrEF were defined as left ventricular ejection fraction (LVEF) $\geq 50\%$ and $< 50\%$, respectively.¹²⁾¹³⁾ Data were collected at each site by a trained study coordinator using a standardized case report form and entered into the KorHF Registry database via a web-based electronic data capture system that included an electronic case report form. Data collection and auditing were performed by the KorHF Registry Steering Committee at the Korean Society of Heart Failure.

Endpoints

The primary endpoint was 12-month all-cause death stratified by renal dysfunction and LVEF.

Statistical analysis

Data were presented as numbers and frequencies for categorical variables, and as mean \pm standard deviation (SD) or median with interquartile ranges for continuous variables. For comparison between groups, the χ^2 test (or Fisher's exact test when any expected cell count was < 5 for a 2×2 table) was used for categorical variables and unpaired Student's t-tests were applied for continuous variables. We calculated the area under the curve (AUC) of LVEF and log NT-proBNP level by receiver-operating-characteristics analysis to predict renal dysfunction. Kaplan-Meier curves were plotted and compared with the log-rank test. A multivariate Cox proportional hazards regression model was used to identify the independent predictors of all-cause death. Variables either associated with mortality with $p < 0.050$ or reported to be associated with mortality were included as confounding variables in the multivariate analysis: age, sex, previous history of myocardial infarction, congestive HF, peripheral artery disease, chronic lung disease, diastolic blood pressure, hemoglobin, serum sodium, GFR, and NT-proBNP. Two-sided p values < 0.050 were considered statistically significant. Statistical tests were performed using IBM SPSS Statistics version 22 (SPSS Inc., Chicago, IL, USA).

RESULTS

Baseline characteristics of the study population

Three-thousand two-hundred consecutive hospitalized AHF patients were enrolled in the KorHF Registry. Mean age was 67.6 years old and 50% were male, 47% had hypertension and 31% had diabetes mellitus (DM). The overall 1-year mortality rate was 15%. Among them, GFR, LVEF, and NT-proBNP levels were available for 1,932 patients (60%). Mean age was 68 years and 49% were male. Of these, 47% had hypertension, and 30% had DM, and 78% were New York Heart Association (NYHA) functional class III or IV. The mean ejection fraction (EF) was 39% and that of GFR was 62 mL/min/1.73 m².

Overall, 51% had renal dysfunction; among them 38% had mild and 14% had severe renal dysfunction. Patients with renal dysfunction had more unfavorable baseline characteristics (**Supplementary Table 1**). With regard to LV systolic function, 524 patients (27%) were diagnosed with HFpEF and they had more unfavorable baseline characteristics, such as older age and higher prevalence of hypertension (**Supplementary Table 2**). The baseline characteristics of the patients according to renal dysfunction and EF are shown in **Table 1**. Patients with renal dysfunction were older. In addition, they had higher prevalence of DM, hypertension, myocardial infarction, and stroke history in both HFpEF and HFrEF groups. Concerning the laboratory parameters, patients with renal dysfunction showed lower hemoglobin, serum sodium level, and higher NT-proBNP level regardless of HFpEF and HFrEF.

The relationship between log NT-proBNP, EF, and GFR

There was a significant inverse correlation between GFR and log NT-proBNP level in all ($r=-0.298$, $p<0.001$), HFpEF ($r=-0.359$, $p<0.001$), and HFrEF patients ($r=-0.284$, $p<0.001$). Consequently, patients with renal dysfunction had higher log NT-proBNP levels than their counterparts (3.47 [3.09–3.79] vs. 3.85 [3.48–4.24]; $p<0.001$). Furthermore, there was an inverse correlation between LVEF and log NT-proBNP levels ($r=-0.238$, $p<0.001$), so that HFrEF patients had higher log NT-proBNP levels than HFpEF patients (3.02 [3.44–3.78] vs. 3.74 [3.37–4.07]; $p<0.001$). GFR did not correlate with LVEF ($r=0.017$, $p=0.458$), and there was no difference in GFR between the HFpEF and HFrEF (62.8±34.1 vs. 61.3±40.5 mL/min/1.73 m²; $p=0.462$). Consequently, there was no difference in the prevalence of renal dysfunction between the 2 groups, either (49% vs. 52%; $p=0.210$) (**Supplementary Figure 1A–F**). There was no significant difference in NT-proBNP level whether patients were diagnosed as *de novo* HF or ADHF (median, 4,377.0 vs. 4,941.0; $p=0.168$).

In receiver-operating-curves analysis, the AUC of log NT-proBNP level to predict renal dysfunction was 0.71 (95% confidence interval [CI], 0.69–0.73) in all patients, 0.71 (95% CI, 0.66–0.75) in HFpEF and 0.71 (95% CI, 0.69–0.74) in HFrEF patients. In contrast, the AUC of EF was only 0.51 (95% CI, 0.48–0.53) in all patients, 0.52 (95% CI, 0.47–0.57) in HFpEF and 0.54 (95% CI, 0.51–0.57) in HFrEF patients (**Figure 1**). The risk of renal dysfunction increased with NT-proBNP levels, but not with LVEF (**Figure 2**).

Independent predictors of renal dysfunction were old age (odds ratio [OR], 1.50; 95% CI, 1.18–1.90), being female (OR, 1.40; 95% CI, 1.12–1.75), having DM (OR, 1.63; 95% CI, 1.28–2.07), hypertension (OR, 1.99; 95% CI, 1.59–2.48), history of congestive HF (OR, 1.59; 95% CI, 1.25–2.03), myocardial infarction (OR, 1.75; 95% CI, 1.26–2.43), hemoglobin<11.5 mg/dL (OR, 1.91; 95% CI, 1.52–2.39), serum sodium<135 mmol/L (OR, 1.61; 95% CI, 1.22–2.14), and log NT-proBNP ≥3.65 pg/mL (OR, 2.70; 95% CI, 2.18–3.35).

Table 1. Baseline characteristics according to GFR and LV systolic function

Characteristics (n=1,932)	HFpEF (EF ≥50%; n=524)			HFREF (EF <50%; n=1,408)		
	GFR ≥60 mL/min/1.73 m ² (n=268)	GFR <60 mL/min/1.73 m ² (n=256)	p value	GFR ≥60 mL/min/1.73 m ² (n=675)	GFR <60 mL/min/1.73 m ² (n=733)	p value
Demographic data						
Age (years), mean (SD)	67.4 (14.1)	75.0 (9.9)	<0.001	62.5 (15.9)	70.7 (12.7)	<0.001
Age (>65 years), No. (%)	175 (65.3)	214 (83.6)	<0.001	348 (51.6)	532 (72.6)	<0.001
Male, No. (%)	116 (43.3)	74 (28.9)	0.001	415 (61.5)	348 (47.5)	<0.001
Past medical history, No. (%)						
DM	50 (18.7)	90 (35.2)	<0.001	154 (22.8)	287 (39.2)	<0.001
Hypertension	110 (41.0)	169 (66.0)	<0.001	230 (34.1)	406 (55.4)	<0.001
Myocardial infarction	11 (4.1)	27 (10.5)	0.004	80 (11.9)	160 (21.8)	<0.001
Congestive HF	64 (25.4)	76 (31.9)	0.109	141 (24.1)	223 (34.0)	<0.001
Peripheral artery disease	3 (1.1)	2 (0.8)	0.691	11 (1.6)	10 (1.4)	0.679
Valvular heart disease	31 (12.3)	37 (15.5)	0.299	48 (8.2)	87 (13.3)	0.004
Stroke	16 (6.0)	31 (12.1)	0.014	51 (7.6)	81 (11.1)	0.025
Chronic lung disease	14 (5.6)	9 (3.8)	0.353	19 (3.2)	27 (4.1)	0.416
Percutaneous coronary intervention	11 (4.4)	25 (10.5)	0.009	34 (5.8)	75 (11.4)	<0.001
Coronary artery bypass graft	3 (1.2)	2 (0.8)	0.700	4 (0.7)	32 (4.9)	<0.001
Valvular surgery	9 (3.6)	7 (2.9)	0.695	7 (1.2)	12 (1.8)	0.363
NYHA functional class, No. (%)						
I	21 (9.1)	12 (5.4)	0.010	48 (8.2)	50 (7.7)	0.013
II	42 (18.1)	27 (12.1)	-	98 (16.8)	79 (12.1)	-
III	133 (57.3)	125 (56.1)	-	327 (55.9)	355 (54.4)	-
IV	36 (15.5)	59 (26.5)	-	112 (19.1)	168 (25.8)	-
Physical exam, mean (SD)						
Systolic blood pressure (mmHg)	135.6 (28.8)	135.5 (31.4)	0.964	129.2 (27.2)	131.6 (30.9)	0.119
Diastolic blood pressure (mmHg)	78.1 (16.5)	76.6 (17.2)	0.322	79.4 (17.3)	77.7 (19.1)	0.087
Heart rate (bpm)	87.2 (26.7)	83.7 (25.9)	0.126	93.2 (23.7)	92.2 (25.4)	0.446
Laboratory findings, mean (SD)						
Leukocyte (/μL)	9,075.2 (6,401.5)	8,862.0 (4,294.0)	0.668	8,999.8 (4,400.9)	9,934.9 (5,831.1)	0.001
Hemoglobin (mg/dL)	12.6 (2.1)	11.3 (2.3)	<0.001	13.3 (2.0)	12.0 (2.4)	<0.001
BUN (mg/dL)	16.7 (7.0)	31.3 (18.1)	<0.001	17.3 (6.8)	31.7 (17.9)	<0.001
Cr (mg/dL)	0.9 (0.2)	1.9 (1.4)	<0.001	0.9 (0.2)	2.1 (1.7)	<0.001
Serum sodium (mmol/L)	138.9 (5.1)	137.4 (5.3)	0.002	139.0 (4.5)	137.9 (5.4)	<0.001
Troponin I (ng/mL), median (25th to 75th percentiles)	0.05 (0.03–0.15)	0.05 (0.03–0.13)	0.850	0.07 (0.04–0.47)	0.13 (0.05–0.82)	0.265
NT-proBNP (pg/mL), median (25th to 75th percentiles)	1,958.0 (782.5–3,424.0)	4,265.5 (1,693.3–11,946.5)	<0.001	3,616.0 (1,565.0–7,085.0)	8,732.0 (3,644.0–20,515.5)	<0.001
EF (%)	60.6 (7.7)	60.2 (7.6)	0.481	30.7 (9.5)	31.9 (9.6)	0.019

BUN = blood urea nitrogen; Cr = creatinine; DM = diabetes mellitus; EF = ejection fraction; GFR = glomerular filtration rate; HF = heart failure; HFpEF = heart failure with preserved ejection fraction; HFREF = heart failure with reduced ejection fraction; LV = left ventricle; NT-proBNP = N-terminal pro-brain natriuretic peptide; NYHA = New York Heart Association; SD = standard deviation.

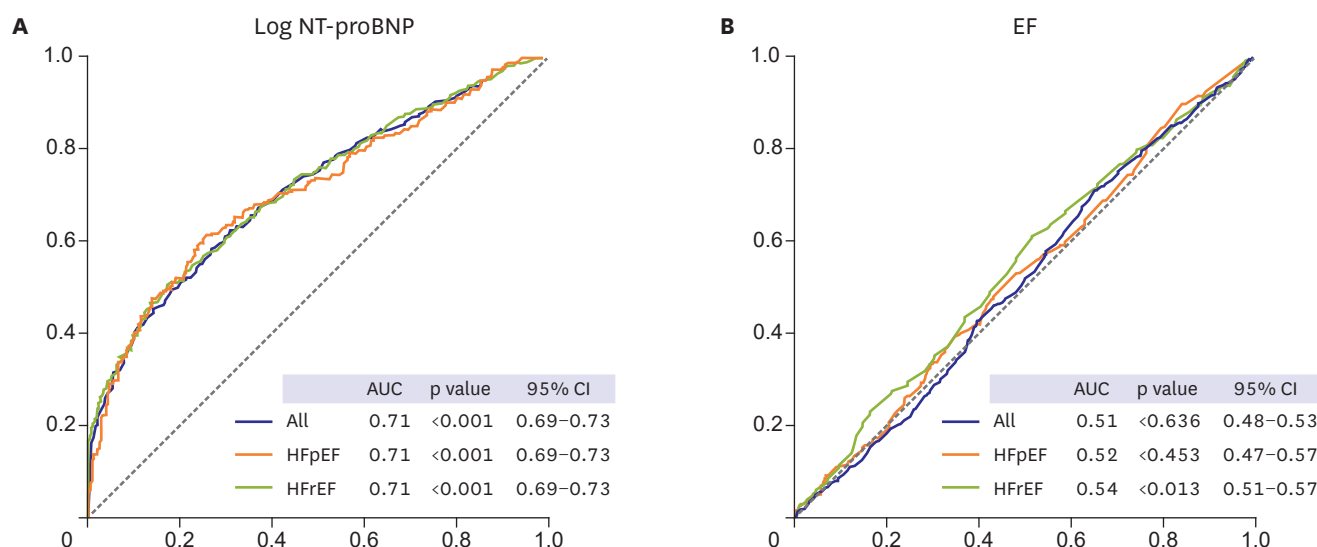


Figure 1. Association between renal dysfunction according to log NT-proBNP and LVEF. In receiver-operating-curves analysis, the AUC of log NT-proBNP (A) and LVEF (B) to predict renal dysfunction are presented. AUC = area under the curve; CI = confidence interval; EF = ejection fraction; HFpEF = heart failure with preserved ejection fraction; HFrEF = heart failure reduced ejection fraction; LVEF = left ventricular ejection fraction; NT-proBNP = N-terminal pro-brain natriuretic peptide.

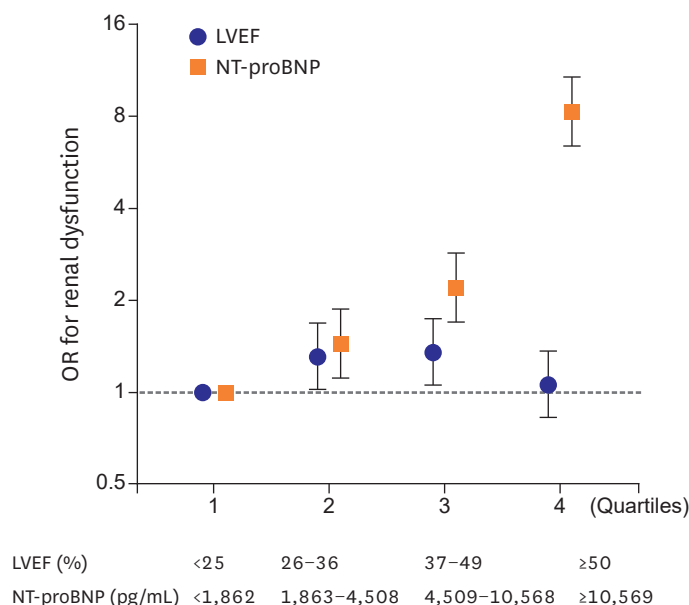
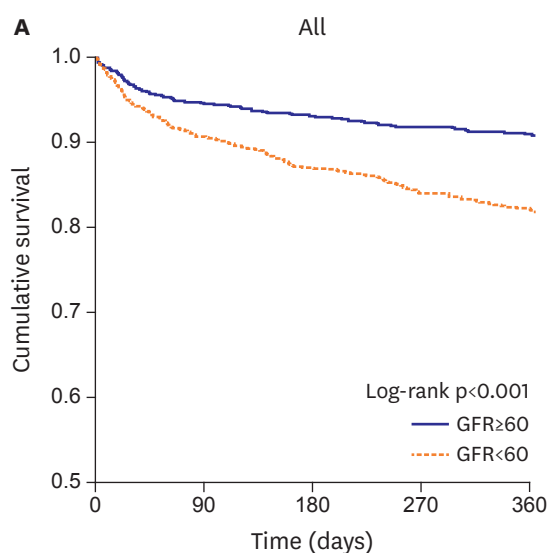


Figure 2. Association of NT-proBNP and LVEF with renal dysfunction. Patients were divided in quartiles according to LVEF and NT-proBNP. Risk on the y-axis is HR±95% CIs using a logistic regression model. CI = confidence interval; HR = hazard ratio; LVEF = left ventricular ejection fraction; NT-proBNP = N-terminal pro-brain natriuretic peptide; OR = odds ratio.

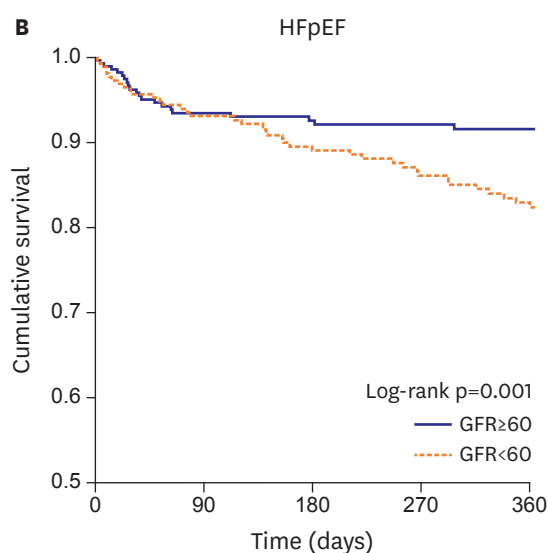
Clinical outcomes according to EF and renal dysfunction

At 12-month follow-up, 241 patients (12.5%) died and 372 patients (19.3%) were readmitted. Patients who died had more unfavorable baseline characteristics, such as older age, previous history of myocardial infarction, congestive HF, peripheral artery disease and chronic lung disease. They had lower levels of hemoglobin, but higher levels of BUN, serum Cr, and NT-proBNP (**Supplementary Table 3**).

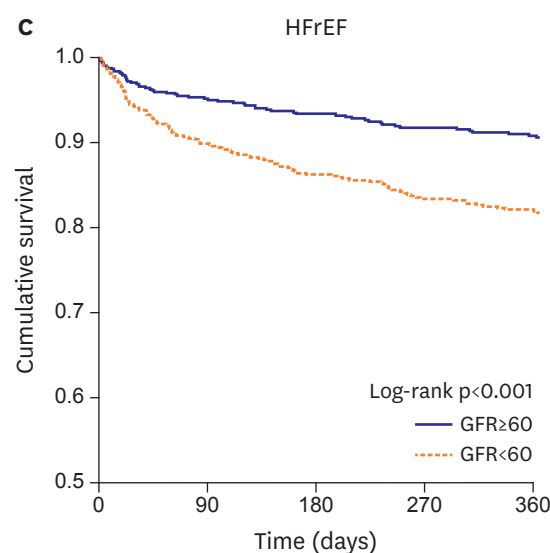
Patients with renal dysfunction had higher 12-month mortality (8.4% vs. 16.4%; log-rank $p < 0.001$). When stratifying according to HF type, patients with renal dysfunction had higher mortality in both HFpEF (7.9% vs. 15.2%; log-rank $p = 0.008$) and HFrEF (8.6% vs. 16.8%; log-rank $p < 0.001$) groups (**Figure 3**). Survival analysis of 4 groups according to LVEF and renal dysfunction is presented in **Supplementary Figure 2**. Concerning readmission, patients with renal dysfunction had a higher readmission rate (16.5% vs. 21.9%; log-rank



No. at risk					
GFR ≥ 60	943	781	712	662	588
GFR < 60	989	784	701	616	546



No. at risk					
GFR ≥ 60	268	212	198	181	164
GFR < 60	256	204	185	162	148



No. at risk					
GFR ≥ 60	675	569	514	481	424
GFR < 60	733	580	516	545	398

Figure 3. Survival rates according to renal dysfunction. Kaplan-Meier curves of the 12-month survival rates according to renal dysfunction in all (A), HFpEF (B), and HFrEF (C) patients are presented.
GFR = glomerular filtration rate; HFpEF = heart failure with preserved ejection fraction; HFrEF = heart failure with reduced ejection fraction.

$p < 0.001$), however, when stratifying according to EF, patients with renal dysfunction had higher readmission only in the HFrEF (16.6% vs. 23.3%; log-rank $p < 0.001$), but not in the HFpEF group (16.1% vs. 18.0%; log-rank $p = 0.479$) (**Figure 4**). With regard to severity of renal dysfunction, patients with severe renal dysfunction had worse outcomes (**Supplementary Figures 3 and 4**).

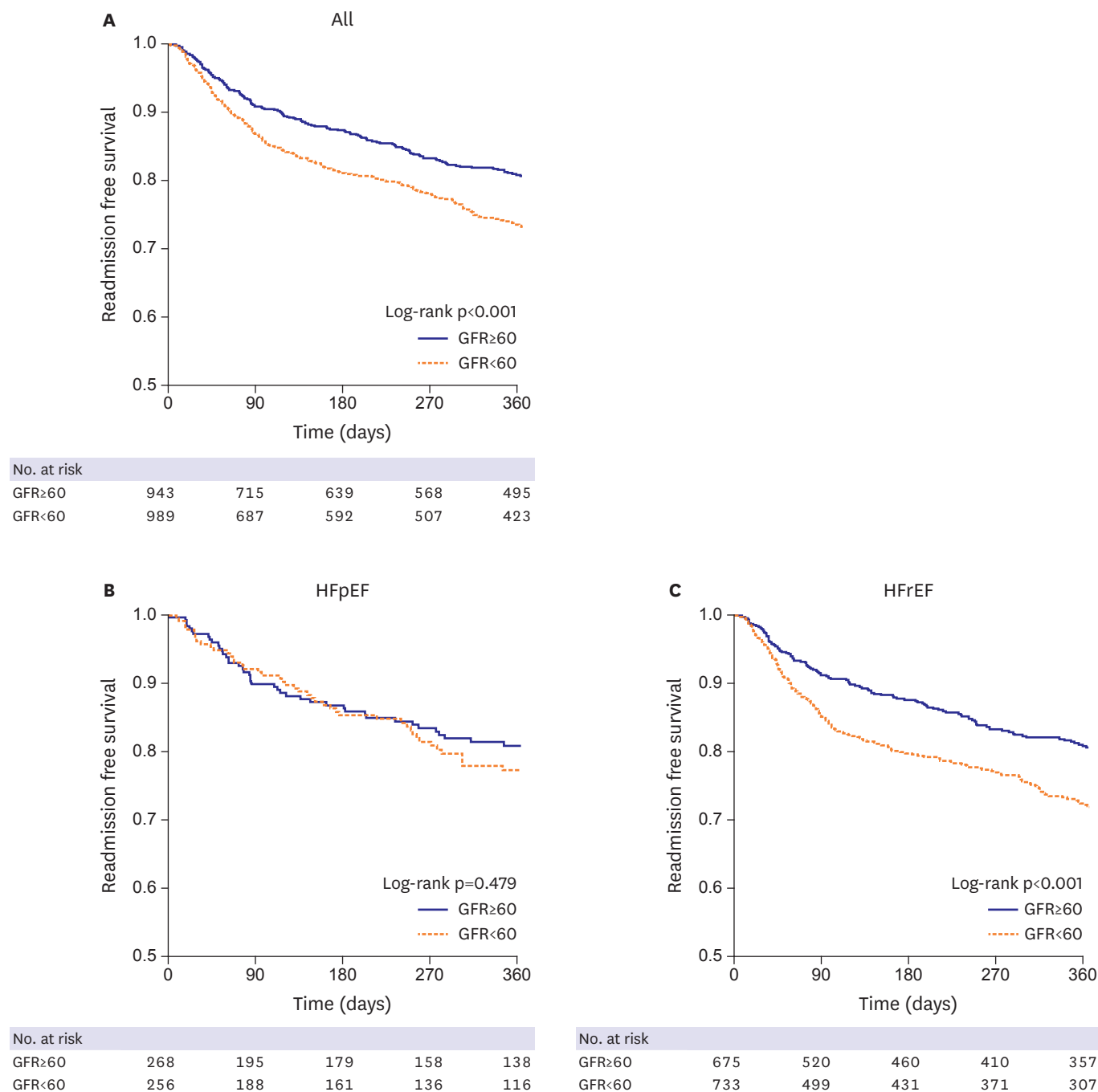


Figure 4. Readmission free survival rates according to renal dysfunction. Kaplan-Meier curves for 12-month readmission free survival rates according to renal dysfunction in all (A), HFpEF (B), and HFrEF (C) patients are presented.

GFR = glomerular filtration rate; HFpEF = heart failure with preserved ejection fraction; HFrEF = heart failure with reduced ejection fraction.

Table 2. Multivariate Cox regression analysis for all-cause mortality

Characteristics	Univariate analysis			Multivariate analysis*		
	HR	95% CI	p value	HR	95% CI	p value
1-month death	-	-	-	-	-	-
HF patients (n=1,932)	-	-	-	-	-	-
GFR<60 mL/min/1.73 m ²	reference	-	-	-	-	0.492
30≤GFR<60 mL/min/1.73 m ²	1.03	0.39–2.71	0.949	0.89	0.50–1.60	0.698
GFR<30 mL/min/1.73 m ²	1.10	0.30–3.99	0.886	1.33	0.65–2.70	0.437
NT-proBNP≥4,508.5 pg/mL	2.42	1.52–3.86	<0.001	2.46	1.39–4.35	0.002
HFpEF patients (n=524)	-	-	-	-	-	-
GFR<60 mL/min/1.73 m ²	-	-	0.990	-	-	0.769
30≤GFR<60 mL/min/1.73 m ²	1.10	0.30–3.99	0.886	0.61	0.14–2.68	0.510
GFR<30 mL/min/1.73 m ²	1.03	0.39–2.71	0.949	0.75	0.26–2.13	0.586
NT-proBNP≥4,508.5 pg/mL	1.74	0.72–4.20	0.218	1.79	0.67–4.75	0.244
HFrEF patients (n=1,408)	-	-	-	-	-	-
GFR<60 mL/min/1.73 m ²	-	-	<0.001	-	-	0.211
30≤GFR<60 mL/min/1.73 m ²	3.57	1.91–6.70	<0.001	1.91	0.825–4.444	0.131
GFR<30 mL/min/1.73 m ²	1.53	0.85–2.76	0.155	1.03	0.502–2.109	0.938
NT-proBNP≥4,508.5 pg/mL	2.83	1.56–5.11	0.001	3.77	1.672–8.500	0.001
12-month death	-	-	-	-	-	-
HF patients (n=1,932)	-	-	-	-	-	-
GFR<60 mL/min/1.73 m ²	-	-	<0.001	-	-	0.001
30≤GFR<60 mL/min/1.73 m ²	1.60	1.19–2.15	0.002	1.13	0.81–1.58	0.479
GFR<30 mL/min/1.73 m ²	3.49	2.52–4.85	<0.001	2.08	1.40–3.11	<0.001
NT-proBNP≥4,508.5 pg/mL	2.11	1.62–2.76	<0.001	-	-	-
HFpEF patients (n=524)	-	-	-	-	-	-
GFR<60 mL/min/1.73 m ²	-	-	0.008	-	-	0.644
30≤GFR<60 mL/min/1.73 m ²	1.67	0.93–2.99	0.088	1.18	0.62–2.23	0.611
GFR<30 mL/min/1.73 m ²	2.83	1.46–5.49	0.002	1.46	0.66–3.21	0.349
NT-proBNP≥4,508.5 pg/mL	2.72	1.64–4.53	<0.001	2.07	1.16–3.71	0.014
HFrEF patients (n=1,408)	-	-	-	-	-	-
GFR<60 mL/min/1.73 m ²	-	-	<0.001	-	-	<0.001
30≤GFR<60 mL/min/1.73 m ²	1.58	1.12–2.23	0.010	1.10	0.74–1.63	0.653
GFR<30 mL/min/1.73 m ²	3.76	2.57–5.49	<0.001	2.43	1.52–3.89	<0.001
NT-proBNP≥4,508.5 pg/mL	1.94	1.42–2.67	<0.001	1.51	1.03–2.20	0.033

CI = confidence interval; GFR = glomerular filtration rate; HF = heart failure; HFpEF = heart failure with preserved ejection fraction; HFrEF = heart failure with reduced ejection fraction; HR = hazard ratio; NT-proBNP = N-terminal pro-brain natriuretic peptide.

*HRs have been adjusted for age >65 years, sex, previous history of myocardial infarction, congestive HF, peripheral artery disease, chronic lung disease, diastolic blood pressure < median, hemoglobin < median, and serum sodium level <135 mmol/L.

In a Cox proportional hazard regression analysis, renal dysfunction was a significant predictor of 12-month mortality (mild renal dysfunction and hazard ratio [HR], 1.33; 95% CI, 0.65–2.70; severe renal dysfunction and HR, 2.08; 95% CI, 1.40–3.11) amongst others (**Table 2**). When stratifying according to HF type, severe renal dysfunction was a significant risk factor in HFrEF patients (HR, 2.43; 95% CI, 1.52–3.89). But its prognostic value was diminished in HFpEF patients (HR, 1.46; 95% CI, 0.66–3.21 across 30 mL/min/1.73 m²).

DISCUSSION

The main findings of this multicenter HF registry analysis are as follows; GFR was dependent on log NT-proBNP level, but independent of EF; and the prevalence of renal dysfunction was similar in HFpEF and HFrEF groups. Renal dysfunction was an independent risk factor for poor outcomes in all AHF patients. However, its prognostic value was attenuated in HFpEF patients, suggesting a differential prognostic value according to HF type.

It is of note that there was a significant inverse correlation between log NT-proBNP level, GFR, and LVEF; however, there was no significant correlation between GFR and LVEF, and the proportion of renal dysfunction was the same in HFpEF vs. HFrEF. The inverse relationship between log NT-proBNP levels and renal function has been previously reported.¹⁴⁾¹⁵⁾ Although the renal dependence on clearance of NT-proBNP partly accounts for elevation of NT-proBNP level, the wide variation in NT-proBNP level among patients with renal dysfunction suggests that reduced renal clearance is only one of many mechanisms for NT-proBNP elevation.¹⁴⁾ NT-proBNP is a cardiac neurohormone that is mainly secreted from the ventricles in response to an increase in wall tension.¹⁶⁾ According to the law of Laplace, wall tension correlates directly with wall pressure and LV diameter, but inversely with LV wall thickness. Thus, HFrEF patients with an enlarged LV cavity size have higher wall tension and higher NT-proBNP levels than HFpEF patients with an increased relative wall thickness and relatively preserved LV diameter.¹⁷⁾

Renal dysfunction in HF patients comprises 2 main components; i.e., intrinsic nephropathy and CRS. As for the intrinsic nephropathy, both HF and kidney disease share common comorbidities such as old age, hypertension, and DM. Nonetheless, these risk factors were more prevalent in HFpEF, so that we cautiously speculate that the proportion of intrinsic nephropathy may be higher in HFpEF than in HFrEF patients. Various comorbidities including DM are reported to cause endothelial inflammation in the microvasculature, leading to functional and structural abnormalities contributing to HFpEF development.¹⁸⁾¹⁹⁾ Those comorbidities can also cause renal impairment by microvascular dysfunction, implying that HFpEF patients may at higher risk for renal impairment.²⁰⁾²¹⁾

Concerning CRS, impaired hemodynamic status and excessive neurohormonal activation are the most often discussed mechanisms. In HF patients, inadequate renal perfusion due to low cardiac output, renal venous congestion, and excessive vasoconstriction can cause impaired renal function. Tang and Mullens²²⁾ showed in AHF patients with low LVEF, venous congestion was the strongest hemodynamic determinant for the development of worsening renal function, while impaired cardiac index had a limited contribution.¹²⁾ This explains the lack of correlation between GFR and LVEF, because LVEF does not necessarily translate into cardiac index. NT-proBNP is a biomarker for neurohormonal activation and HFrEF patients had higher NT-proBNP levels. We also cautiously suggest that the proportion of CRS patients may be higher in HFrEF than in HFpEF.

Taken together, the different proportion of intrinsic nephropathy and CRS may explain the phenomenon of same prevalence of renal dysfunction in HFpEF and HFrEF despite the difference in NT-proBNP levels. In the candesartan in heart failure: assessment of reduction in mortality and morbidity (CHARM)-overall program, there was no correlation between GFR and LVEF, and patient proportion with renal dysfunction was 34.7% in the CHARM-preserved, 33.0% in CHARM-added, and 42.6% in CHARM-alternative study, respectively.²³⁾ This may also explain the differential prognostic impact of impaired renal function on outcomes by LVEF.

Renal dysfunction is a well-known risk factor for worse clinical outcomes in HF patients.¹²⁻²⁵⁾ In this study we also showed that HF patients with renal dysfunction had higher 12-month mortality and readmission rates compared to those without renal dysfunction. However, when stratifying according to the EF, the prognostic value of renal dysfunction differed; in the HFrEF group, severe renal dysfunction was associated with an increased risk of 12-month mortality, while in the HFpEF group, its prognostic value was not statistically significant after adjustment for significant covariates.

The impact of renal function on survival has been well studied in HFrEF patients, and patients with renal dysfunction showed poor prognosis.²⁵⁻²⁷ However, in patients with HFpEF, the data are limited. Rusinaru et al.²⁸ showed that HFpEF patients with impaired function (defined as GFR < 60 mL/min/1.73 m²) had a 1.43 fold increased risk for 7-year mortality, but no increase at 6 months. In the CHARM study, renal dysfunction had poor prognosis for both HFrEF and HFpEF patients.²³ In a post-hoc propensity score analysis of the digoxin investigation group (DIG) trial, the chronic kidney disease (CKD)-associated mortality was worse in patients with diastolic HF than in those with systolic HF.²⁹ The reason for the different prognostic impact between studies including ours may be explained by the different study populations, definitions of HFpEF, and study periods (**Supplementary Table 4**).

In our study, the 1-year survival did not differ between HFpEF and HFrEF patients (log-rank $p=0.527$, **Supplementary Figure 5**), which is in line with previous studies.¹² Our results suggest that the contribution of renal dysfunction to worse outcomes seems to be attenuated in HFpEF. The HFpEF patients had more unfavorable baseline characteristics such as older age and hypertension among others; it is possible that the effect of renal dysfunction on outcomes may be diluted by other risk factors.

It is of note that NT-proBNP level remained a strong prognostic factor in both HFpEF and HFrEF patients.⁸ Thus, NT-proBNP seems to be a more robust prognostic marker for clinical outcomes than renal impairment, regardless of the type of HF.

Our study has several limitations. First, this is an analysis of a prospective cohort, albeit a large one, rather than a randomized trial, and therefore unmeasured confounding factors could have an influence on the relation between renal insufficiency, LV systolic function and clinical outcomes. Second, we only included patients who had available data on EF, NT-proBNP level and GFR. Thus, we cannot exclude the possibility of selection bias. Third, we used the MDRD formula to calculate GFR which should be used for patients with stable renal function. The accuracy of the MDRD formula may not be warranted in AHF patients. Because we used LVEF during admission for AHF to classify HF, we do not know how many patients would be reclassified to chronic stable HF status, when considering the wide variation of LVEF between acute and chronic HF. Nonetheless, categorization during the acute phase has been widely accepted.^{9,17} Finally, pulmonary function tests were not routinely performed in these patients. Although there was no significant difference in previous history of chronic lung disease between HFpEF and HFrEF groups in this registry, this could introduce misdiagnosis of chronic obstructive lung disease to HFpEF.³⁰

In conclusion, in AHF patients, the prevalence of renal dysfunction did not differ between HFpEF and HFrEF patients. Renal dysfunction was independent of LV systolic function, but dependent on NT-proBNP level. Although severe renal dysfunction is a significant prognostic factor in HFrEF patients, its impact seems to be attenuated in HFpEF patients.

ACKNOWLEDGEMENTS

This work was supported by the Korean Society of Heart Failure and the Korean Society of Cardiology. The KorHF Registry was conducted at 24 medical centers: The Catholic University of Korea, St. Mary's Hospital; Chungnam National University Hospital; Chungbuk National University Hospital; Chonnam National University Hospital; Ewha Woman's

University Hospital; Eulji University Daejeon Hospital; Gacheon University Gil Hospital; Hallym University Sacred Heart Hospital; Hanyang University Guri Hospital; Jeju National University Hospital; Konkuk University Medical Centre; Keimyung University Hospital; Korea University Guro Hospital; Kyungpook National University Hospital; Sungkyunkwan University Samsung Medical Centre; Seoul National University Bundang Hospital; Seoul National University Hospital; Ulsan University Asan Medical Centre; Wonkwang University Hospital; Yonsei University Wonju Christian Hospital; Yeungnam University Hospital; Yonsei University Severance Hospital; Dongguk University Ilsan Hospital; Soonchunhyang University Cheonan Hospital; and Inje University Busan Paik Hospital.

SUPPLEMENTARY MATERIALS

Supplementary Table 1

Baseline characteristics according to renal dysfunction

[Click here to view](#)

Supplementary Table 2

Baseline characteristics according to LV systolic function

[Click here to view](#)

Supplementary Table 3

Baseline characteristics according to the 12-month all-cause death

[Click here to view](#)

Supplementary Table 4

Comparison of studies about prognosis of renal dysfunction in HFpEF

[Click here to view](#)

Supplementary Figure 1

Association between LVEF, log NT-proBNP, and renal dysfunction. There was an inverse correlation between log NT-proBNP and GFR (A), thus patients with renal dysfunction showed higher level of log NT-proBNP (B). EF and log NT-proBNP had also an inverse relationship (C), and HFrEF showed higher level of log NT-proBNP than HFpEF (D). There was no significant correlation between EF and GFR (E, F).

[Click here to view](#)

Supplementary Figure 2

Kaplan-Meier curves of the 12-month survival rates are presented. Patients are categorized into 4 groups; HFpEF with preserved renal function, HFpEF with renal dysfunction, HFrEF with preserved renal function, and HFrEF with renal dysfunction.

[Click here to view](#)

Supplementary Figure 3

Kaplan-Meier curves of 12-month mortality rates according to renal dysfunction with subclassification in all (A), HFpEF (B) and HFrEF (C) patients.

[Click here to view](#)

Supplementary Figure 4

Kaplan-Meier curves of 12-month readmission free survival rates according to renal dysfunction with subclassification in all (A), HFpEF (B) and HFrEF (C) patients.

[Click here to view](#)

Supplementary Figure 5

Kaplan-Meier curves of the 12-month mortality rates according to LV systolic function.

[Click here to view](#)

REFERENCES

1. WRITING GROUP MEMBERS Lloyd-Jones D, Adams RJ, et al. Heart disease and stroke statistics--2010 update: a report from the American Heart Association. *Circulation* 2010;121:e46-215.
[PUBMED](#) | [CROSSREF](#)
2. Lee JH, Lim NK, Cho MC, Park HY. Epidemiology of heart failure in Korea: present and future. *Korean Circ J* 2016;46:658-64.
[PUBMED](#) | [CROSSREF](#)
3. Youn JC, Han S, Ryu KH. Temporal trends of hospitalized patients with heart failure in Korea. *Korean Circ J* 2017;47:16-24.
[PUBMED](#) | [CROSSREF](#)
4. Ronco C, Haapio M, House AA, Anavekar N, Bellomo R. Cardiorenal syndrome. *J Am Coll Cardiol* 2008;52:1527-39.
[PUBMED](#) | [CROSSREF](#)
5. Januzzi JL, van Kimmenade R, Lainchbury J, et al. NT-proBNP testing for diagnosis and short-term prognosis in acute destabilized heart failure: an international pooled analysis of 1256 patients: the International Collaborative of NT-probnp Study. *Eur Heart J* 2006;27:330-7.
[PUBMED](#) | [CROSSREF](#)
6. Seino Y, Ogawa A, Yamashita T, et al. Application of NT-proBNP and BNP measurements in cardiac care: a more discerning marker for the detection and evaluation of heart failure. *Eur J Heart Fail* 2004;6:295-300.
[PUBMED](#) | [CROSSREF](#)
7. O'Donoghue M, Chen A, Baggish AL, et al. The effects of ejection fraction on N-terminal ProBNP and BNP levels in patients with acute CHF: analysis from the ProBNP Investigation of Dyspnea in the Emergency Department (PRIDE) study. *J Card Fail* 2005;11:S9-14.
[PUBMED](#) | [CROSSREF](#)
8. van Veldhuisen DJ, Linssen GC, Jaarsma T, et al. B-type natriuretic peptide and prognosis in heart failure patients with preserved and reduced ejection fraction. *J Am Coll Cardiol* 2013;61:1498-506.
[PUBMED](#) | [CROSSREF](#)
9. Choi DJ, Han S, Jeon ES, et al. Characteristics, outcomes and predictors of long-term mortality for patients hospitalized for acute heart failure: a report from the Korean heart failure registry. *Korean Circ J* 2011;41:363-71.
[PUBMED](#) | [CROSSREF](#)
10. Ho KK, Anderson KM, Kannel WB, Grossman W, Levy D. Survival after the onset of congestive heart failure in Framingham Heart Study subjects. *Circulation* 1993;88:107-15.
[PUBMED](#) | [CROSSREF](#)
11. Levey AS, Coresh J, Greene T, et al. Using standardized serum creatinine values in the modification of diet in renal disease study equation for estimating glomerular filtration rate. *Ann Intern Med* 2006;145:247-54.
[PUBMED](#) | [CROSSREF](#)

12. Owan TE, Hodge DO, Herges RM, Jacobsen SJ, Roger VL, Redfield MM. Trends in prevalence and outcome of heart failure with preserved ejection fraction. *N Engl J Med* 2006;355:251-9.
[PUBMED](#) | [CROSSREF](#)
13. Borlaug BA, Paulus WJ. Heart failure with preserved ejection fraction: pathophysiology, diagnosis, and treatment. *Eur Heart J* 2011;32:670-9.
[PUBMED](#) | [CROSSREF](#)
14. Anwaruddin S, Lloyd-Jones DM, Baggish A, et al. Renal function, congestive heart failure, and amino-terminal pro-brain natriuretic peptide measurement: results from the ProBNP Investigation of Dyspnea in the Emergency Department (PRIDE) Study. *J Am Coll Cardiol* 2006;47:91-7.
[PUBMED](#) | [CROSSREF](#)
15. Luchner A, Hengstenberg C, Löwel H, Riegger GA, Schunkert H, Holmer S. Effect of compensated renal dysfunction on approved heart failure markers: direct comparison of brain natriuretic peptide (BNP) and N-terminal pro-BNP. *Hypertension* 2005;46:118-23.
[PUBMED](#) | [CROSSREF](#)
16. Nakagawa O, Ogawa Y, Itoh H, et al. Rapid transcriptional activation and early mRNA turnover of brain natriuretic peptide in cardiocyte hypertrophy. Evidence for brain natriuretic peptide as an "emergency" cardiac hormone against ventricular overload. *J Clin Invest* 1995;96:1280-7.
[PUBMED](#) | [CROSSREF](#)
17. Kang SH, Park JJ, Choi DJ, et al. Prognostic value of NT-proBNP in heart failure with preserved versus reduced EF. *Heart* 2015;101:1881-8.
[PUBMED](#) | [CROSSREF](#)
18. Paulus WJ, Tschöpe C. A novel paradigm for heart failure with preserved ejection fraction: comorbidities drive myocardial dysfunction and remodeling through coronary microvascular endothelial inflammation. *J Am Coll Cardiol* 2013;62:263-71.
[PUBMED](#) | [CROSSREF](#)
19. Ter Maaten JM, Damman K, Verhaar MC, et al. Connecting heart failure with preserved ejection fraction and renal dysfunction: the role of endothelial dysfunction and inflammation. *Eur J Heart Fail* 2016;18:588-98.
[PUBMED](#) | [CROSSREF](#)
20. Bidani AK, Polichnowski AJ, Loutzenhiser R, Griffin KA. Renal microvascular dysfunction, hypertension and CKD progression. *Curr Opin Nephrol Hypertens* 2013;22:1-9.
[PUBMED](#) | [CROSSREF](#)
21. Brown WV. Microvascular complications of diabetes mellitus: renal protection accompanies cardiovascular protection. *Am J Cardiol* 2008;102:10L-13L.
[PUBMED](#) | [CROSSREF](#)
22. Tang WH, Mullens W. Cardiorenal syndrome in decompensated heart failure. *Heart* 2010;96:255-60.
[PUBMED](#) | [CROSSREF](#)
23. Hillege HL, Nitsch D, Pfeffer MA, et al. Renal function as a predictor of outcome in a broad spectrum of patients with heart failure. *Circulation* 2006;113:671-8.
[PUBMED](#) | [CROSSREF](#)
24. Schrier RW. Role of diminished renal function in cardiovascular mortality: marker or pathogenetic factor? *J Am Coll Cardiol* 2006;47:1-8.
[PUBMED](#) | [CROSSREF](#)
25. Damman K, Valente MA, Voors AA, O'Connor CM, van Veldhuisen DJ, Hillege HL. Renal impairment, worsening renal function, and outcome in patients with heart failure: an updated meta-analysis. *Eur Heart J* 2014;35:455-69.
[PUBMED](#) | [CROSSREF](#)
26. Dries DL, Exner DV, Domanski MJ, Greenberg B, Stevenson LW. The prognostic implications of renal insufficiency in asymptomatic and symptomatic patients with left ventricular systolic dysfunction. *J Am Coll Cardiol* 2000;35:681-9.
[PUBMED](#) | [CROSSREF](#)
27. de Silva R, Nikitin NP, Witte KK, et al. Incidence of renal dysfunction over 6 months in patients with chronic heart failure due to left ventricular systolic dysfunction: contributing factors and relationship to prognosis. *Eur Heart J* 2006;27:569-81.
[PUBMED](#) | [CROSSREF](#)
28. Rusinaru D, Buiciuc O, Houpe D, Tribouilloy C. Renal function and long-term survival after hospital discharge in heart failure with preserved ejection fraction. *Int J Cardiol* 2011;147:278-82.
[PUBMED](#) | [CROSSREF](#)
29. Ahmed A, Rich MW, Sanders PW, et al. Chronic kidney disease associated mortality in diastolic versus systolic heart failure: a propensity matched study. *Am J Cardiol* 2007;99:393-8.
[PUBMED](#) | [CROSSREF](#)

30. Caruana L, Petrie MC, Davie AP, McMurray JJ. Do patients with suspected heart failure and preserved left ventricular systolic function suffer from “diastolic heart failure” or from misdiagnosis? A prospective descriptive study. *BMJ* 2000;321:215-8.

[PUBMED](#) | [CROSSREF](#)