

Sjögren

1

2

Sjögren

. CT

Sjögren

가

Sjögren

가

(Fig. 1A).

5 - 10%

(1)

(2). Sjögren

가

5%

가

(Fig. 1B, C)

(3).

(Fig. 1B).

(Fig. 1D).

(4).

Sjögren

(Fig. 1E)

42

가 4

SSA(Ro)

Sjögren

가

C3 C4

. Sjögren

(Fig. 1F).

가

T1

T2

¹가

²가

2007 8 6

2007 10 4

Sjögren

가

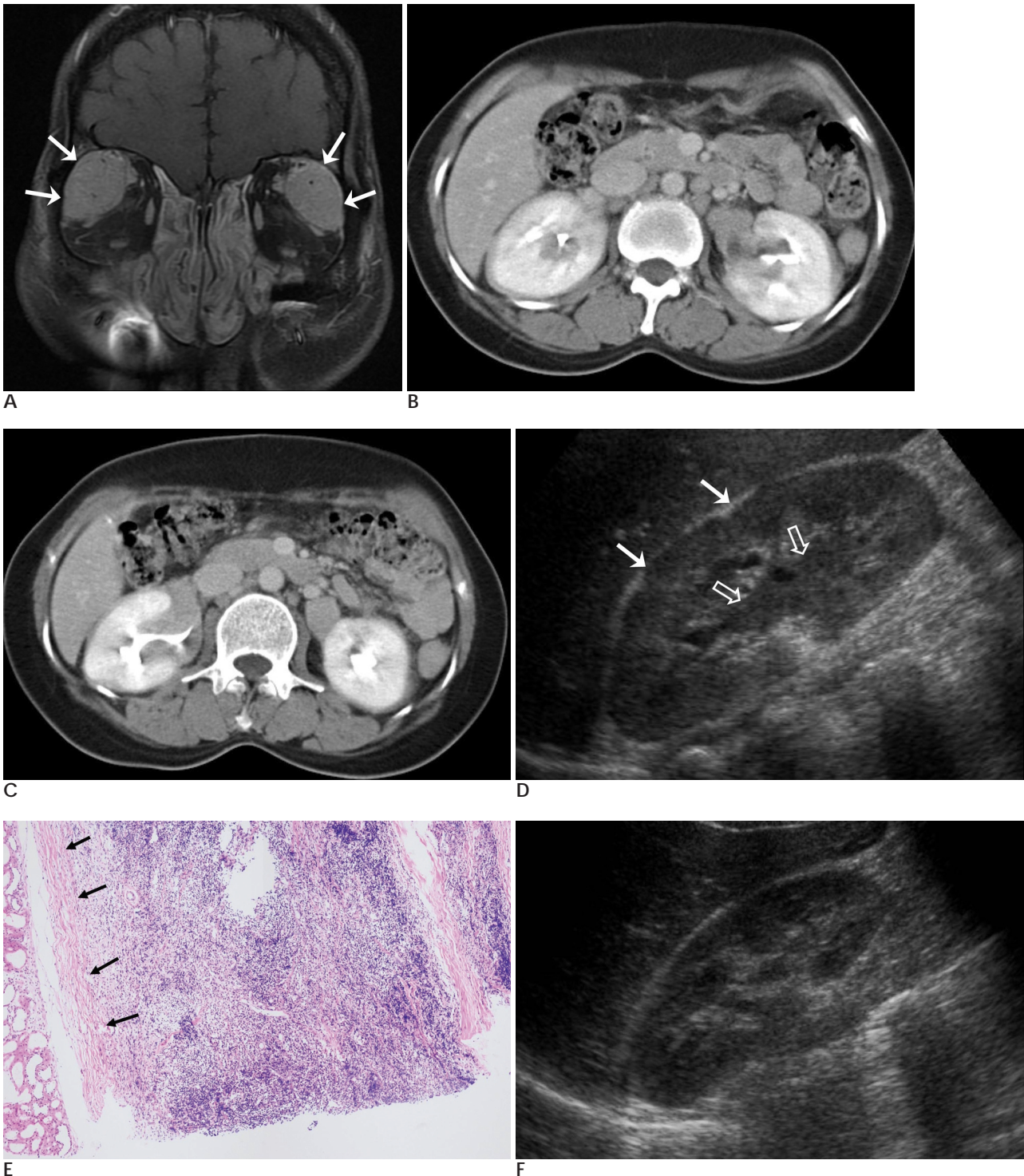


Fig. 1. A 42-year-old female with Sjögren's syndrome.

A. Contrast-enhanced, fat-suppressed coronal T1-weighted MR image of the orbit demonstrates diffuse symmetrical enlargement of both lacrimal glands (arrows) in both orbits with compression and displacement of the superior and lateral rectus muscles.

B, C. CT scans reveal homogeneous soft tissue masses in both renal sinuses and periureteral areas and perirenal thin band like lesions. There is mild dilatation of the left renal pelvis and calyces.

D. Ultrasonography of right kidney reveals thin hypoechoic rim (arrows) along the capsule of the kidney and hypoechoic mass (open arrows) filled in renal sinus.

E. Photomicrograph (H/E, $\times 40$) of perirenal mass demonstrates perirenal reactive lymphoid hyperplasia. Arrows indicate renal capsule.

F. On follow-up ultrasonography after treatment, the right kidney shows complete regression of the thin hypoechoic rim and hypoechoic mass which filled the renal sinus.

가

(1, 5). CD4

T

(3). Sjögren B

가

(5). Sjögren 27%

가

(6, 7).

Sjögren

가

가 (10).

(3, 5). Sjögren

가

가 44 (5, 6).

(7). Sjögren

3가

(1).

가

가

가 . Sjögren

T

(7). CD4 T

(6 - 8). Sjögren

(6, 8)

Sjögren

(9).

(10). 가

(9, 10).

1. Sugai S, Masaki Y, Dong L. Lymphoproliferative disorders in patients with Sjögren's syndrome. *Autoimmun Rev* 2004;3:S67-S69
2. Manthorpe R, Asmussen K, Oxholm P. Primary Sjögren's syndrome: diagnostic criteria, clinical features, and disease activity. *J Rheumatol Suppl* 1997;50:8-11
3. Bossini N, Savoldi S, Franceschini F, Mombelloni S, Baronio M, Cavazzana I, et al. Clinical and morphological features of kidney involvement in primary Sjögren's syndrome. *Nephrol Dial Transplant* 2001;16:2328-2336
4. Bechtold RE, Dyer RB, Zagoria RJ, Chen MY. The perirenal space: relationship of pathologic processes to normal retroperitoneal anatomy. *Radiographics* 1996;16:841-854
5. Skopouli FN. Kidney injury in Sjögren's syndrome. *Nephrol Dial Transplant* 2001;16 Suppl 3:63-64
6. Cacoub P, Ginsburg C, Tazi Z, Beaufils H, Charlotte F, Davi F, et al. Sjögren's syndrome with acute renal failure caused by renal pseudolymphoma. *Am J Kidney Dis* 1996;28:762-766
7. Yuhara T, Sakauchi M, Akama T, Suzuki H, Yamane K, Kashiwagi H. Sjögren's syndrome with hydronephrosis caused by pseudolymphoma. *Intern Med* 1992;31:474-477
8. Teranishi J, Ogawa T, Saito K, Noguchi K, Kubota Y. Sjögren's syndrome with bilateral hydronephrosis caused by pseudolymphoma of bilateral renal pelves: a case report. *Hinyokika Kyo.* 2003;49:91-93
9. Sheth S, Ali S, Fishman E. Imaging of renal lymphoma: patterns of disease with pathologic correlation. *Radiographics* 2006;26:1151-1168
10. Urban BA, Fishman EK. Renal lymphoma: CT patterns with emphasis on helical CT. *Radiographics* 2000;20:197-212

Benign Lymphoproliferative Disorder of the Perirenal Space and Renal Sinus in Sjögren's Syndrome: A Case Report¹

Yu Ri Shin, M.D., Seung Eun Jung, M.D., Michael Yong Park, M.D., Kook Jin Ahn, M.D.,
Jae Mun Lee, M.D., Gyeongsin Park, M.D.²

¹Department of Radiology, St. Mary's Hospital, College of Medicine, the Catholic University of Korea

²Department of Radiology and Hospital Pathology, St. Mary's Hospital, College of Medicine, the Catholic University of Korea

We report a case of benign lymphoproliferative disease involving the perirenal space and renal sinus in patients with Sjögren's syndrome, which simulated malignant lymphoma. CT scans revealed homogeneous soft tissue masses in both renal sinuses and perirenal thin band-like lesions. An ultrasonography revealed thin hypoechoic rims along the capsule of both kidneys as well as hypoechoic masses filled in renal sinuses. The lesions completely regressed following steroid treatment. Although rare, since these benign lymphoproliferative disorders with a similar appearance to lymphoma can occur in patients with Sjögren's syndrome, pathological biopsies should be performed.

Index words : Lymphoproliferative disorders

Kidney

Spiral computed tomography

Ultrasonography

Sjögren's syndrome

Address reprint requests to : Seung Eun Jung, M.D., Department of Radiology, St. Mary's Hospital, College of Medicine,
the Catholic University of Korea, 62, Youido-dong, Yeongdeungpo-gu, Seoul 150-713, Korea.
Tel. 82-2-3779-1327 E-mail: sejung@catholic.ac.kr