



1

CT 가

tary plasmacytoma of bone),
(plasma cell leukemia) 가 , (soli - 8 x 7 x 7 cm 가
CT 1 - 2 cm 가
3 - 10% (Fig. 1A - C).
(1, 2).

(1).

1

2 cm

가

0.5 cm

(Fig. 1B).

CT

가

가

54

가

1D).

(Fig.
가

가

CEA, CA19 - 9

가

가

가

4 cm

가

가

CT

CT

가

가

(Fig. 1E)

가

2004 9 8

2005 1 6

(Fig. 1F)

가

(sol-

tary plasmacytoma of bone),
(plasma cell leukemia)

가

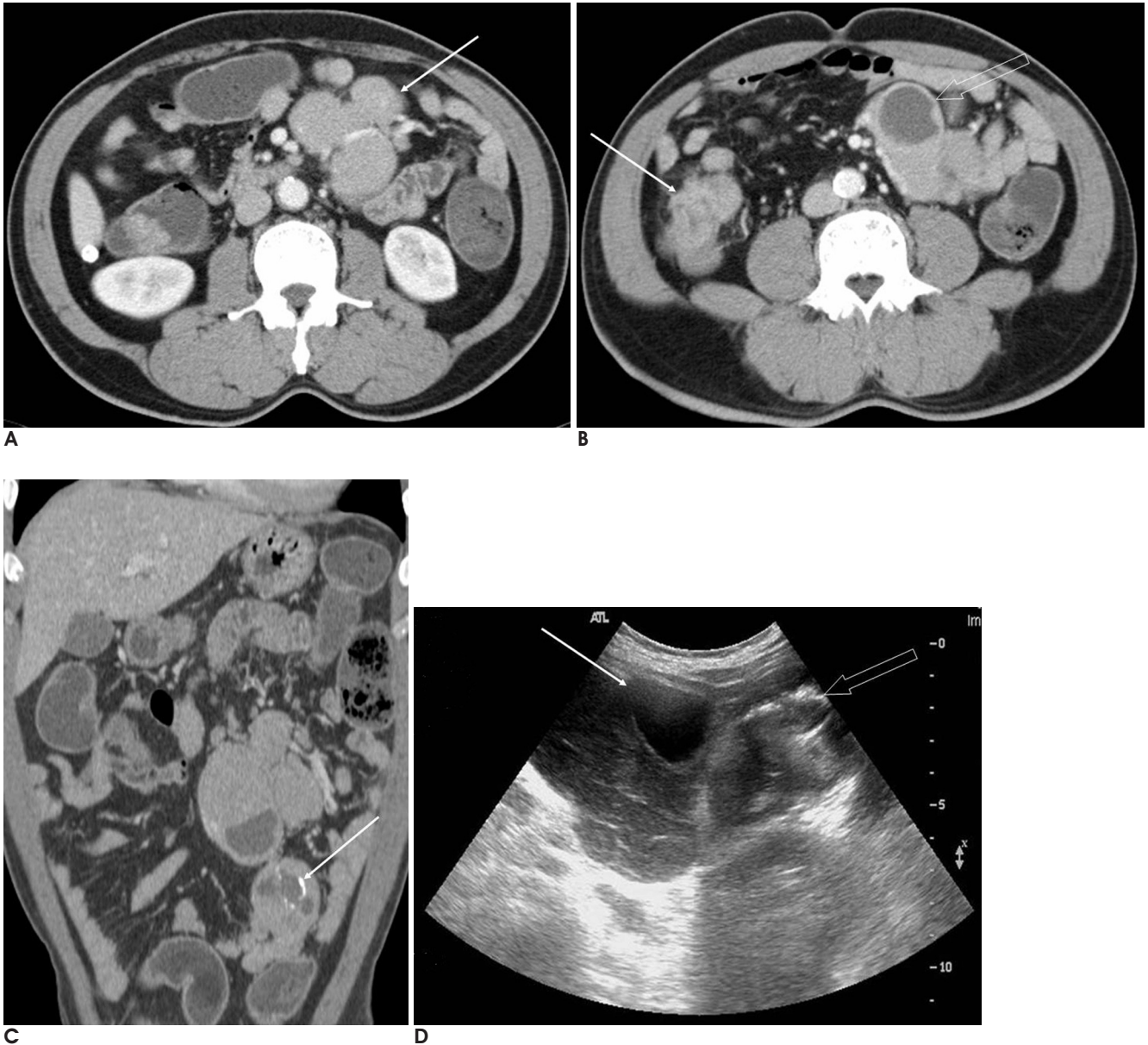


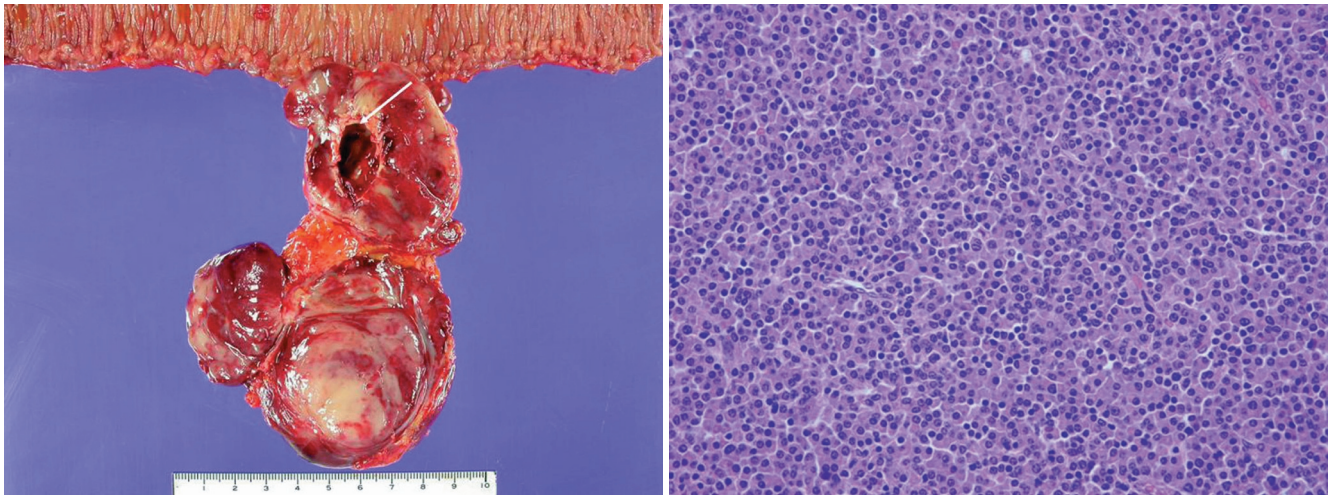
Fig. 1. 54-year-old man with mesenteric extramedullary plasmacytoma.

A. Axial contrast enhanced CT image of lower abdomen shows a lobulated soft tissue mass (arrow) in the mesentery. The attenuation of the mass is homogeneous and similar to that of the muscle.

B. Axial contrast enhanced CT image shows almost circumferential wall thickening of cecum. Colonic mass (arrow) extends into surrounding pericolic fat and surgically confirmed as colon cancer with Duke's stage B2. Also noted cystic portion of mesenteric mass (open arrow).

C. Coronal reformatted image demonstrates that the mass with some area of lower attenuation. Note thin rim like calcifications (arrow) along periphery of the low attenuation.

D. Ultrasonography in the longitudinal plane demonstrates a well circumscribed hypoechoic solid mass with cystic portion (arrow). There is also linear bright echogenicity (open arrow) suggestive of linear calcification.



E **Fig. 1. E.** Cut surface of gross specimen shows lobulated solid mass with focal hemorrhage and cystic change. The cystic portion (arrow) was rimmed by thin calcification.

F **F.** Microscopic finding shows sheets of plasma cells with well differentiation (Hematoxylin- eosin stain, $\times 200$).

, CT MRI
 , 80% ,
 , 10% 가
 gallium - 67 citrate
 가
 (1, 2).
 (3, 4)
 1 (5) .
 (2, 6, 7).
 가
 .
 가
 , 가
 , 가
 (1, 6).
 가
 , 가
 가
 (6, 7) 가
 가
 (M -
 component) Bense Jones
 25% 가
 (6).
 ,
 ,
 가

(8, 9).
 (5) 가 .
 가
 30%
 (1, 6).
 CT
 가
 1. Alexiou C, Kau RJ, Dietzfelbinger H, Kremer M, Spiess JC, Schratzenstaller B, et al. Extramedullary plasmacytoma: tumor occurrence and therapeutic concepts. *Cancer* 1999;85:2305-2314
 2. Chen TC, Wu JH, NG KF, Lien JM, Hung CF. Solitary ex-

tramedullary plasmacytoma in the retroperitoneum. *Am J Hematol* 1998;58:235-238
 3. Nishikawa H, Tanaka R, Nakata T, Nakanishi T, Miyoshi K, Fujii Y, et al. A case of extramedullary plasmacytoma of the mesenteric lymph nodes. *Rinsho Hoshasen* 1990;35:987-990
 4. Yoshida T, Soda K, Yamada S, Nakahara M, Nishida J, Kametaka M, et al. Biclinal extramedullary plasmacytoma arising in the peritoneal cavity: report of a case. *Surg Today* 2004;34:379-382
 5. Peison B, Benisch B, Williams MC, Newman R. Primary extramedullary plasmacytoma of the omentum associated with recurrent adenocarcinoma of the colon: first case report. *Human Pathol* 1980;11:399-401
 6. Watanabe N, Morijiri M, Shimizu M, Noguchi K, Miyazaki T, Watanabe A, et al. A case of retroperitoneal extramedullary plasmacytoma with multiple metastases. *Clin Imaging* 2000;24:365-367
 7. Pantelidou D, Tsatalas C, Margaritis D, Karayiannakis AJ, Kaloutsis V, Spanoudakis E, et al. Extramedullary plasmacytoma: report of two cases with uncommon presentation. *Ann Hematol* 2005;84:188-191
 8. Christou L, Tsiara S, Frangides Y, Pnevmatikos J, Briasoulis E, Galanakis E, et al. Patients with multiple myeloma and solid tumors: six case reports. *J Exp Clin Cancer Res* 1998;17:239-242
 9. Cannon M, Flanders W, Pellett P. Occurrence of primary cancers in association with multiple myeloma and Kaposi's sarcoma in the United States, 1973-1995. *Int J Cancer* 2000;85:453-456

J Korean Radiol Soc 2005;52:133 - 136

Extramedullary Plasmacytoma of Small Bowel Mesentery in Associated with Cecal Cancer: A Case Report¹

Sung Kyu Kim, M.D., Yongsoo Kim, M.D., Young-Sun Kim, M.D., On Koo Cho, M.D.,
 Byung Hee Koh, M.D., Hyunchul Rhim, M.D., Choog-Ki Park, M.D.,
 Dong Woo Park, M.D., Yong Wook Park, M.D.², Young-Ha Oh, M.D.²

¹Department of Diagnostic Radiology, Hanyang University College of Medicine

²Department of Pathology, Hanyang University Guri Hospital

Extramedullary plasmacytoma is a rare disease that is histopathologically defined as a solitary tumor composed of a monoclonal proliferation of cells with plasmacytic differentiation in an extramedullary site. Most of these tumors occur in the submucosa of the upper aerodigestive tract, and they rarely occur in the small bowel mesentery. We report here on a case of extramedullary plasmacytoma of the small bowel mesentery that was in association with a cecal cancer. Abdominal ultrasound and CT revealed a lobulated soft tissue mass with a cystic portion and peripheral calcification. In this case, the preoperative radiological diagnosis was difficult due to accompanying cecal cancer.

Index words : Mesentery, abnormalitles
 Plasmacytoma, CT

Address reprint requests to : Sung Kyu Kim, M.D., Department of Diagnostic Radiology, Hanyang University Guri Hospital, Hanyang University College of Medicine, 249-1 Gyomoon-dong, Guri City, Gyunggi-do 471-701, South Korea.
 Tel. 82-31-560-2544 Fax. 82-31-560-2551 E-mail: drskkim@hanmail.net