

(1) 가 , 1939 가 (lateral superficial vein) 가 (superficial dorsal vein) (Fig. 1A). (1, 2). 1955 (3) 가 (Fig. 1B).

(Fig. 1C).

6

26 가

가 2

2 cm

가

2003

25

57

77

가

1955

15

(34) (4, 7).

(HDI 5000 sonoCT, Phillips, Bothwell, WA)
(12 - 5 MHz)

C,

S

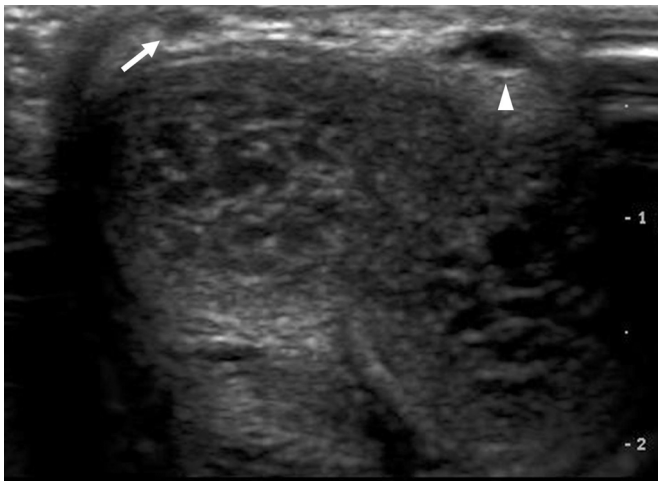
(5), Virchow (6)

1
2
3

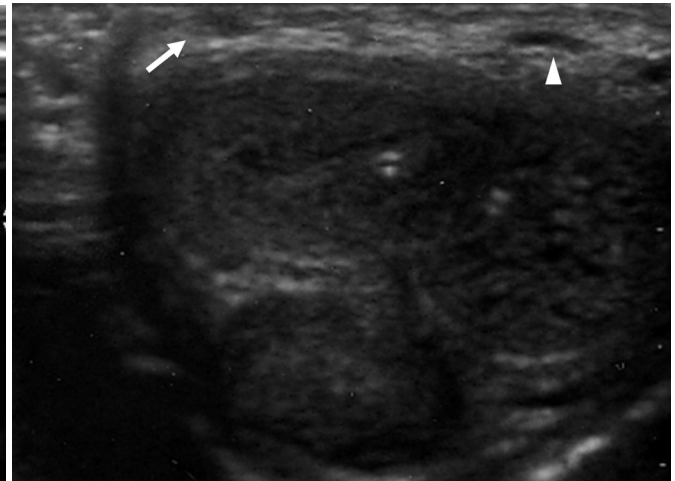
2006 6 19

2006 8 13

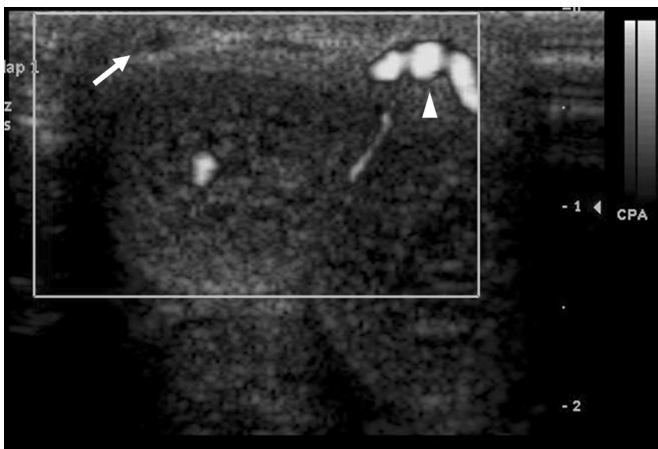
(sexually transmitted disease),



A



B



C

Fig. 1. A 26 year-old-man with linear palpable mass in right dorsal penis.

A. Transverse scan of dorsal penis shows that right lateral superficial vein is more echogenic than the dorsal superficial vein.

B. Transverse scan of dorsal penis with compression revealed compression in the dorsal superficial vein, but not in the right lateral superficial vein.

C. Power Doppler image of corresponding plane of A. shows no blood flow signal in the right lateral superficial vein, but visible blood flow signal in the dorsal superficial vein. (Arrow: Right lateral superficial vein, Arrowhead: Sperficial dorsal vein)

(7).

가

(9).

가
가

가

(10).

(4).

가

가

(8).

가

(Peyronie 's disease)

1. Mondor H. Tronculite sous-cutanee subaigue de la paroi thoracique anterolaterale. *Mem Acad Chir* 1939;65:1271-1278
2. Shetty MK, Watson AB. Mondor's disease of the breast: sonographic and mammographic findings. *AJR Am J Roentgenol* 2001; 177:893-896
3. Braun-Falco O. Clinical manifestations, histology and pathogenesis

- of the cordlike superficial phlebitis forms. *Dermatol Wochenschr* 1955;132:705-715
4. Al-Mwalad M, Loertzer H, Wicht A, Fornara P. Subcutaneous penile vein thrombosis (Penile Mondor's Disease): pathogenesis, diagnosis, and therapy. *Urology* 2006;67:586-588
 5. Pabinger I, Schneider B: Thrombotic risk in hereditary antithrombin, protein C, or protein S deficiency. A cooperative, retrospective study. Gesellschaft fur Thrombose-und Hanostaseforschung (GTH) Study Group on Natural Inhibitors. *Arterioscler Thromb Vasc Biol* 1996;16:742-748
 6. Virchow R. *Ein vortrag uber be thromboses vom jahre 1845. In Gesammelte abhandlungen zur wissenschaftlichen Medizin.* Frankfurt, Germany: Meidinger, 1856;478-486
 7. Nachmann MM, Jaffe JS, Ginsberg PC, Horrow MM, Harkaway RC. Sickle cell episode manifesting as superficial thrombophlebitis of the penis. *J Am Osteopath Assoc* 2003;103:102-104
 8. Shapiro RS. Superficial dorsal penile vein thrombosis (penile Mondor's phlebitis): ultrasound diagnosis. *J Clin Ultrasound* 1996;24:272-274
 9. Griger DT, Angelo TE, Grisier DB. Penile Mondor's disease in a 22-year-old man. *J Am Osteopath Assoc* 2001;101:235-237
 10. Khan SA, Smith NL, Hu KN. New perspectives in diagnosis and management of thrombophlebitis of superficial dorsal vein of the penis. *J Dermatol Surg Oncol* 1982;8:1063-1067

J Korean Radiol Soc 2007;57:77 - 79

Thrombophlebitis of the Penile Superficial Vein, Penile Mondor's Disease: A Case Report¹

Sang Hyun Park, M.D., Young-Hwa Kim, M.D., Hyun Cheol Kim, M.D.², Doo Sang Kim, M.D.³,
Hyung Chul Shin, M.D., Won Kyung Bae, M.D., Il Young Kim, M.D.

¹Department of Radiology, ²Urology Chunan Hospital, Soonchunhyang University

²Department of Radiology East-West Neo Medical Center, Kyung-Hee University

Mondor's disease is commonly known as thrombophlebitis of the superficial vein in the breast, and this disease occurs rarely in the penis. Despite extensive information about the clinical presentation and course of this disease, imaging findings for this disease are limited. We report gray scale and power Doppler sonographic findings of penile Mondor's disease.

Index words : Penis

Thrombophlebitis

Ultrasound (US)

Address reprint requests to : Young Hwa Kim, M.D., Department of Radiology, Chunan Hospital, Soonchunhyang University
23-20 Bongmyung-dong, Chunan 330-721, Korea
Tel. 82-41-570-3515 Fax. 82-41-579-9026 E-mail: ykim525@dreamwiz.com