



1

(gastric web)
1940
가
가 (1, 2).
150
가
2 cm
(3).
(pyloric web)
(body of stomach)
(antral web)

(Fig. 2).

4 가
41
4.0 kg . 가
가 B
8.8 mg/dL 가
0.8 mg/dL .
가

(Fig. 1).

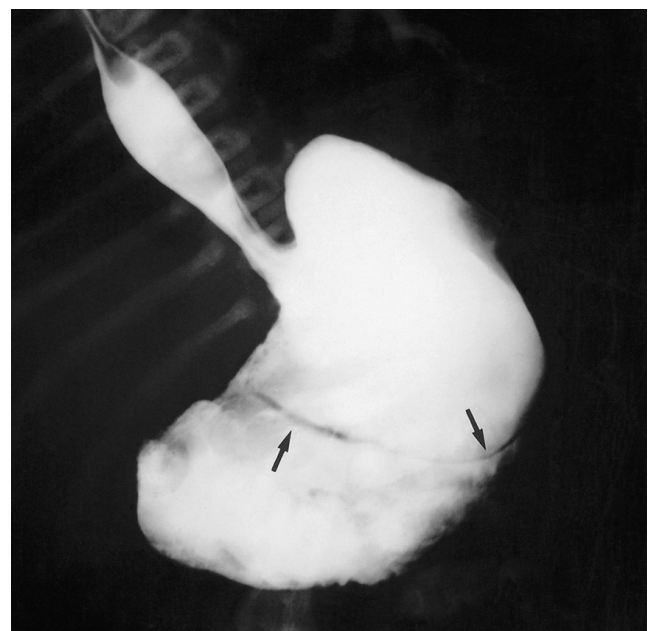


Fig. 1. UGI series shows encircling thin and linear filling defect (black arrow) in gastric body.

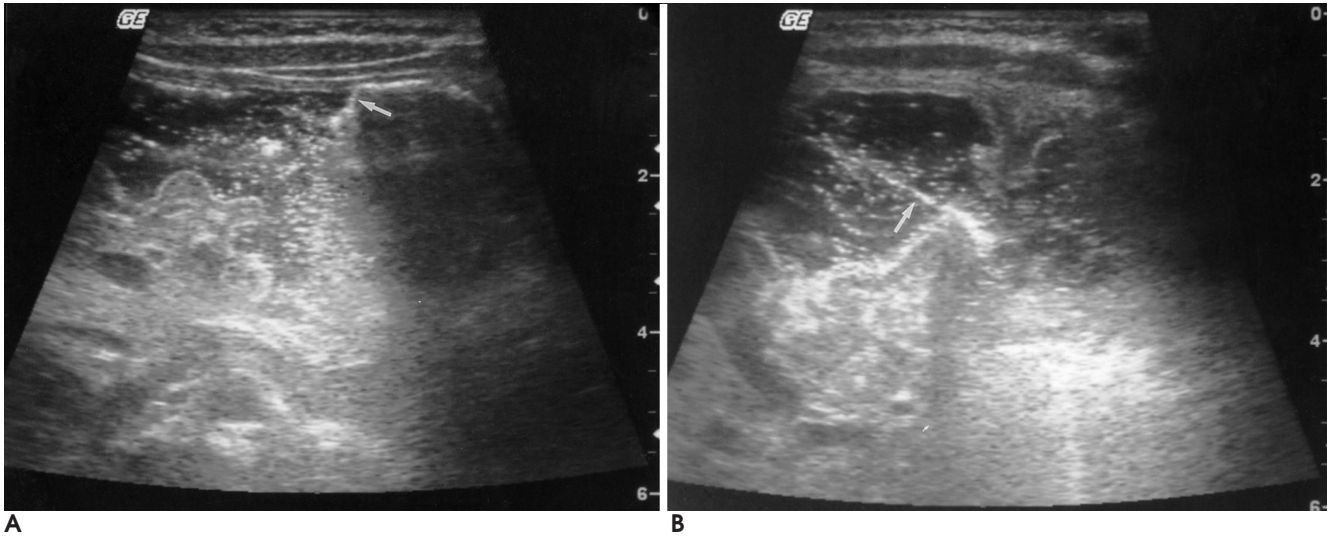


Fig. 2. A and B. Ultrasonogram performed after water feeding shows linear thin echogenic lesion(white arrow) attached to the gastric mucosa in anterior and posterior walls of gastric body.

mm (4).

가 (3, 8).

5 - 6

(embryonic foregut) (complete

recanalization) ,

proliferation) (local endodermal (3, 5, 6).

Banks Waye (9)

가

Lu Schulze - Delrieu 가

(2).

가 (5, 7).

가

가

(duodenal bulb) double bulb

sign 가 (spraying) (3, 5).

jet effect가

가

(pylorospasm), (redundant gastric mucosa),

1. Blazek FD, Boeckman CR. Prepyloric antral diaphragm: delays in treatment. *J Pediatr Surg* 1987;22:948-949
2. Lu CC, Schulze-Delrieu K. Pyloric deformation from peptic disease; radiographic evidence for incompetence rather than obstruction. *Dig Dis Sci* 1990;35:1459-1467
3. Bell MJ, Ternberg JL, McAlister W, Keating JP, Tedesco FJ. Antral diaphragm a cause of gastric outlet obstruction in infants and children. *J Pediatr* 1977;90:196-202

4. Simstein NL. Congenital prepyloric web in a child. *Am J Surg* 1986; 52:282-283
5. Felson B, Berkmen YM, Hoympha AM. Gastric mucosal diaphragm. *Radiology* 1969;92:513-517
6. Berr F, Rienmueller R, Sauerbruch T. Successful endoscopic transection of partially obstructing antral diaphragm. *Gastroenterology* 1985;89:1147-1151
7. . 1 . 1996;16:761-764
8. Chew AL, Friedwald JP, Donovan C. Diagnosis of congenital antral web by ultrasound. *Pediatr Radiol* 1992;22:342-343
9. Banks PA, Waye DJ. The gastroscopic appearance of antral web. *Gastrointest Endosc* 1969;15:228-229

J Korean Radiol Soc 2006;54:39 - 41

Neonatal Gastric Web Located in the Body of Stomach: A Case Report¹

Jun Hyun Yun, M.D., Hyun Jun Choi, M.D., Ji Hyeo Choi, M.D., Ju Hyun Im, M.D.,
Se Jong Kim, M.D., Byung Ran Park, M.D.

¹*Department of Diagnostic Radiology, Gwangju Christian Hospital*

Gastric web is a rare gastric anomaly and almost all the reported cases have been located in the distal antrum. We experienced a case of neonatal gastric web that was located in the body of stomach, and we report the findings of the upper gastrointestinal series and ultrasonography.

Index words : Stomach, abnormalities
Stomach, US
Ultrasound (US), in infants and children

Address reprint requests to : Jun Hyun Yun, M.D., Department of Diagnostic Radiology, Gwangju Christian Hospital,
264 Yanglim-dong, Nam-gu, Gwangju 503-715, Korea.
Tel. 82-62-650-5196 Fax. 82-62-671-7447 E-mail: yjhcell@hanmail.net