

가 67

가 (Fig. 2B).

(1).

(2).

2

CT

67

5

가

가 8.8 mg/dl

가

(Fig. 3A).

(Fig. 1).

가

7.5×5.5 cm

가

(Fig. 3B),  
(celiac artery)

, pT4, pN1,pM0

5

가

5

가

(Fig. 2A).

95%

0.5%

(3, 4).

1  
2  
3  
4

2005 4 23

2005 7 15

25%

(5).

(squamous pearl)

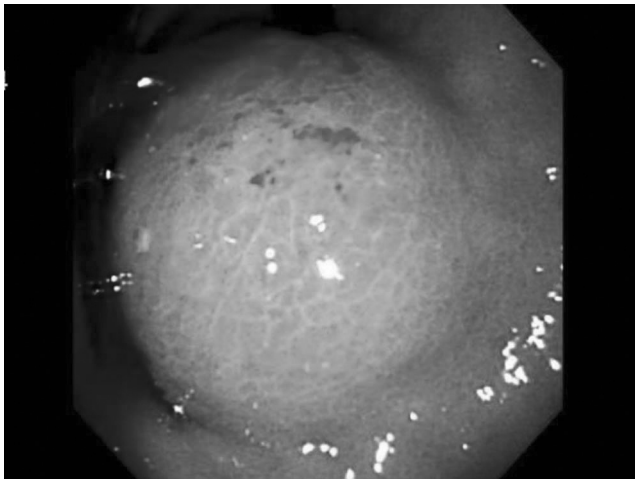
(6).

가 가

(cancerization of ectopic squamous epithelium),

(cancerization of metaplastic

non - neoplastic squamous cells),



**Fig. 1.** Gastrosopic finding of primary adenosquamous carcinoma of the stomach. A round tumor with intact overlying mucosa and a central ulceration in the upper body of the lesser curvature of the stomach is found, mimicking a submucosal tumor.

(squamous metaplasia of an adenocarcinoma),

(differentiation

of multipotential undifferentiated cancer cells toward both squamous and glandular cells)

가

가 0%

가 0.9%

가

(3, 6). Mori

(mucous vacuole)

(tonofibril)

(desmosome)

가

(7),

가

가

2 - 3:1

50 - 70

(8).

가

가

,

(9).

가

가

,

가

가

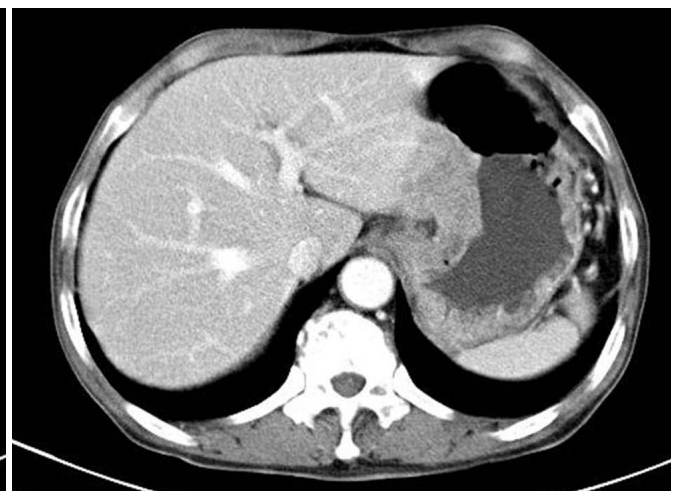
(6).

(8).

(2, 10). Parks (2)



A

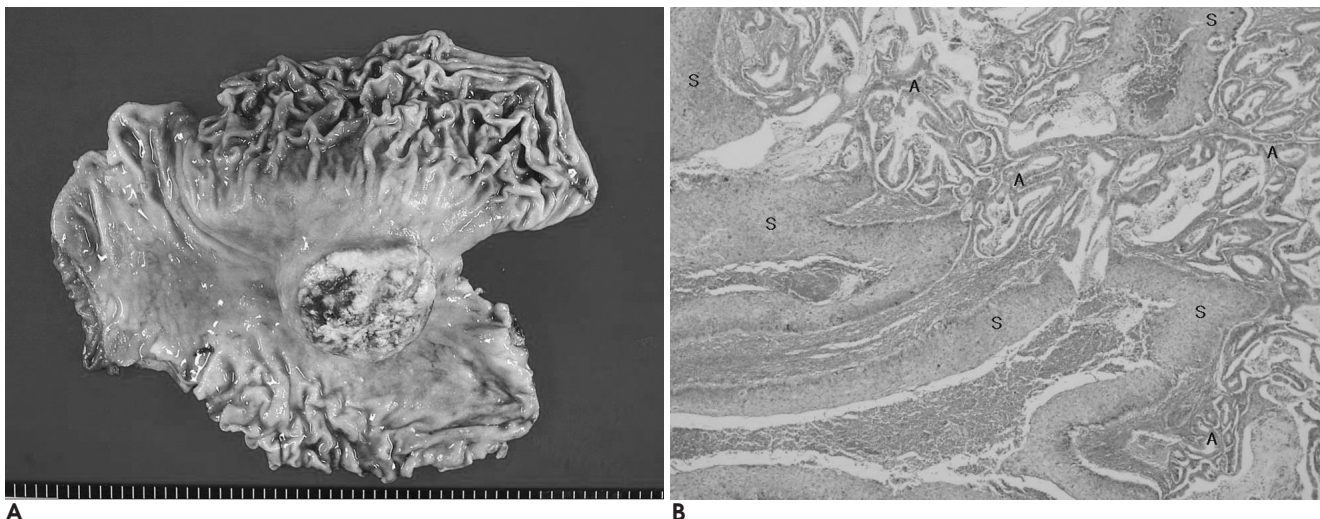


B

**Fig. 2.** Radiologic findings of primary adenosquamous carcinoma of the stomach.

**A.** Contrast-enhanced CT scan obtained during arterial phase shows a heterogeneous enhancing mass with an ulceration (black arrowheads) and overlying intact mucosa (white arrowheads) in the gastric body of the lesser curvature. Left gastric artery (arrow) is encased by this mass, suggesting a carcinoma arising in the mucosa.

**B.** Portal phase contrast-enhanced CT scan shows the obliteration of fat plane between gastric mass and lateral segment of the liver, suggesting a direct invasion.



**Fig. 3.** Pathologic findings of primary adenosquamous carcinoma of the stomach.

**A.** Gross finding of the resected specimen after total gastrectomy shows a round, pale-tan, irregular-surfaced, firm, solid, protruding mass with areas of hemorrhage and necrosis.

**B.** Microscopic finding shows intermingled patterns of irregular-shaped anaplastic glandular proliferation of tumor cells (A) and irregular sheets of atypical keratinized squamous tumor cells (S) with foci of central necrosis (H & E,  $\times 100$ ).

- (10) 6
- 3
- Borrmann 가
- , CT
- 가
- 가 (1).
- , CT
- 1.
- 1999;19:771-775
  2. Parks RE. Squamous neoplasms of the stomach. *AJR Am J Roentgenol* 1967;101:447-449
  3. Strauas R, Heschel S, Fortmann DJ. Primary adenosquamous carcinoma of the stomach. A case report and review. *Cancer* 1969;24:985-995
  4. Urban A, Oszacki J, Szczygiel K. Squamous cell metaplasia in carcinoma of the stomach. *Acta Medica Polona* 1966;7:227-243
  5. Japanese Research Society for Gastric cancer. *Japanese classification of gastric carcinoma*. 1st English ed. Tokyo: Kanehara-Shuppan, 1995;1-7, 64-67
  6. Mori M, Iwashita A, Enjoji M. Adenosquamous carcinoma of the stomach. A clinicopathologic analysis of 28 cases. *Cancer* 1986;57:333-339
  7. Mori M, Fukuda T, Enjoji M. Adenosquamous carcinoma of the stomach-Histogenetic and ultrastructural studies. *Gastroenterology* 1987;92:1078-1082
  8. Hoshi K, Haneo, Takeshita K, Nakajima A, Ishii T. Specific type stomach neoplasms: report based on the questionnaires of the 40th Stomach Cancer Research Group. *Nippon Gan Chiryo Gakkai Shi* 1983;18:2112-2124
  9. Boswell JT, Helwig EB. Squamous cell carcinoma and adenoacanthoma of the stomach. *Cancer* 1965;18:181-192
  10. :6

## Primary Adenosquamous Carcinoma of the Stomach: A Case Report<sup>1</sup>

Mi Jeong Kim, M.D., Jung Hyeok Kwon, M.D., In Ho Kim, M.D.<sup>2</sup>, Seung Wan Ryu, M.D.<sup>2</sup>,  
Kyung Sik Park, M.D.<sup>3</sup>, Jae Seok Hwang, M.D.<sup>3</sup>, Yu Na Kang, M.D.<sup>4</sup>

<sup>1</sup>Department of Diagnostic Radiology, Dongsan Medical Center, Keimyung University School of Medicine

<sup>2</sup>Department of Surgery, Dongsan Medical Center, Keimyung University School of Medicine

<sup>3</sup>Department of Internal Medicine, Dongsan Medical Center, Keimyung University School of Medicine

<sup>4</sup>Department of Pathology, Dongsan Medical Center, Keimyung University School of Medicine

Adenosquamous carcinoma, a rare malignant tumor of the stomach, is characterized by the presence of two different cell components, one adenomatous and the other squamous. Adenosquamous carcinoma of the stomach tends to show more aggressive clinicopathologic features than common adenocarcinoma. There are few reports about radiologic features of adenosquamous carcinoma of the stomach. We experienced a case of a primary adenosquamous carcinoma of the stomach in a 67-year-old man, and report here the ultrasonographic and computed tomographic (CT) findings.

**Index words :** Stomach neoplasms, CT  
Stomach neoplasms, US

Address reprint requests to : Mi Jeong Kim, M.D., Department of Diagnostic Radiology, Dongsan Medical Center, Keimyung University School of Medicine, 194 Dongsan-dong, Jung-gu, Daegu 700-712, Korea.  
Tel. 82-53-250-7770 Fax. 82-53-250-7766 E-mail: kmj1971@dsmc.or.kr