

가 Brunn Nests: 1 1

2

Brunn nests 가

34

Brunn nests

Brunn nests (von Brunn nests)

4 cm 가

Brunn nests가 가 (1 - 3). Brunn nests가

, BCG

Brunn nests

(4),

, nests

가 ,

CT

가

(eosinophilic secretion)가 (Fig.

Brunn nests

1E).

34

가 1

, Brunn nests

Brunn nests

0 - 1

90%

(trigone)

(lamina propria)

(Fig. 1A).

CT

Brunn nest

, nests

(Fig. 1B).

(1, 5 - 7).

가 (Fig. 1C, D).

1

(6).

cm²

Brunn nests

60

70 HU, 180

41 HU,

105 HU

, Brunn nests

가

가

1

2

2005 2 14

2005 5 19

Brunn nests
 nested variant of transitional cell carcinoma (NVTCC), NVTCC
 0.3%
 Brunn nests nest가
 가 , , ,
 NVTCC nest가
 가 , ,
 Brunn nests 가 가



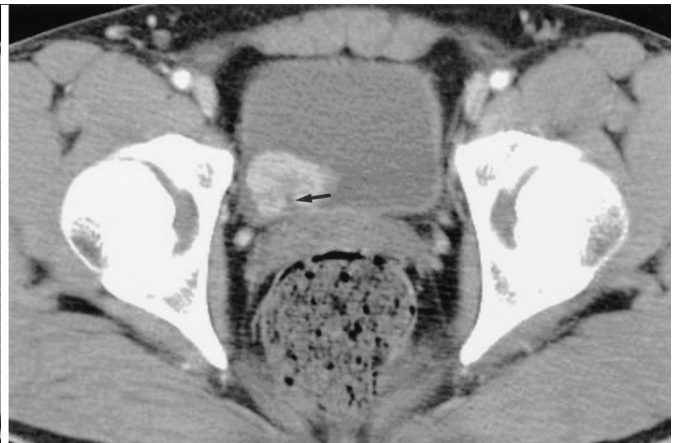
A



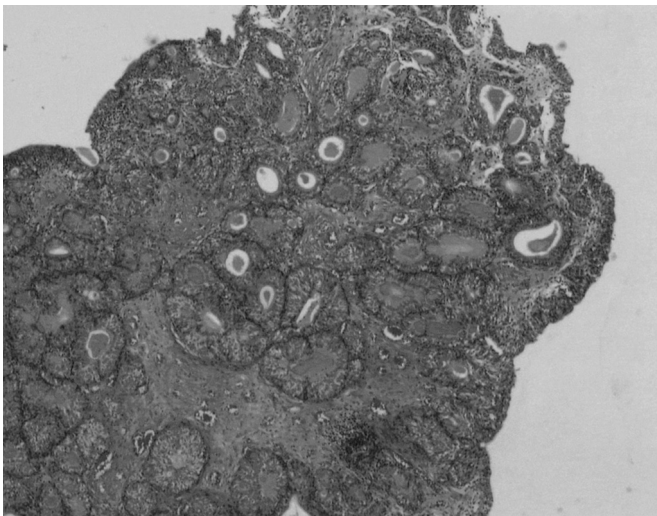
B



C



D



E

Fig. 1. A 34-year-old man with bladder mass, pathologically proven as Brunn nests.

A. Intravenous urogram shows polypoid filling defect at right wall of bladder base.

B-D. CT scans show an enhancing polypoid mass at right posterior bladder wall. It is slightly high density on pre-enhanced scan (**B**) and progressively enhanced with time on post-enhanced scans taken on 60-second (**C**) and 180-second (**D**) after contrast injection. Note slightly less enhancing portion within the mass, and poorly enhancing stalk-like structure (arrows).

E. Photomicrograph shows a polypoid mass consisted of numerous Brunn nests. The nests have regular spacing with orderly spatial arrangement, and flat noninfiltrative base. Multiple nests show cystic dilatation with dense eosinophilic secretions (H & E, $\times 40$).

(8, 9).
가
(nephrogenic adenoma),
가 가
Brunn nests
80%
(10, 11). MR
MR T2 -
(7, 12).
CT
가 Brunn nests
(13) 가 CT
60 가 60 180
가
가 Brunn nests CT
CT 가

- 가
Brunn nests
1. Jones EC. Urinary bladder. Mimics of neoplasia and new pathologic entities. *Urol Clin North Am* 1999;26:509-534
 2. Ito N, Hirose M, Shirai T, Tsuda H, Nakanishi K, Fukushima S. Lesions of the urinary bladder epithelium in 125 autopsy cases. *Acta Pathol Jpn* 1981;31:545-557
 3. Wiener DP, Koss LG, Sablay B, Freed SZ. The prevalence and significance of Brunn's nests, cystitis cystica and squamous metaplasia in normal bladders. *J Urol* 1979;122:317-321
 4. Stern JB. Unusual benign bladder tumor of Brunn nest origin. *Urology* 1979;14:288-289
 5. Tannenbaum M. Brunn's nests: proliferative epithelial lesion in urinary bladder. *Urology* 1976;7:321-322
 6. Young RH. Pseudoneoplastic lesions of the urinary bladder. *Pathol Annu* 1988;23:67-104
 7. Hayes WS. *The urinary bladder*. In Davidson AJ, Hartman DS. *Radiology of the kidney and urinary tract*. Philadelphia: Saunders, 1994:607-648
 8. Murphy WM, Deana DG. The nested variant of transitional cell carcinoma: a neoplasm resembling proliferation of Brunn's nests. *Mod pathol* 1992;5:240-243
 9. Volmar KE, Chan TY, De Marzo AM, Epstein JI. Florid von Brunn nests mimicking urothelial carcinoma: a morphologic and immunohistochemical comparison to the nested variant of urothelial carcinoma. *Am J Surg Pathol* 2003;27:1243-1252
 10. : 1
2002;46:63-66
 11. : 1
2001;44:377-379
 12. , CT, MRI : 2004;50:209-211
 13. Kim JK, Park SY, Ahn HJ, Kim CS, Cho KS. Bladder cancer: analysis of multi-detector row helical CT enhancement pattern and accuracy in tumor detection and perivesical staging. *Radiology* 2004;231:725-731

Brunn Nests Masquerading as Bladder Tumor: A Case Report¹

Jin Hee Lee, M.D., Kyung Hwan Byun, M.D., Ji Min Jeon, M.D.²

¹*Department of Diagnostic Radiology, College of Medicine, Pochon CHA University, Kumi CHA Hospital*

²*Department of Pathology, College of Medicine, Pochon CHA University, Kumi CHA Hospital*

Brunn nests are the most common proliferative lesions of the bladder uroepithelium, but exuberant proliferation can mimic bladder tumor on radiologic imaging and cystoscopy. We describe a case of pathologically proven Brunn nests in a 34-year-old man, misdiagnosed as bladder tumor on preoperative imaging studies.

Index words : Bladder, CT
Bladder, abnormalities
Bladder neoplasms, CT

Address reprint requests to : Kyung Hwan Byun, M.D., Department of Diagnostic Radiology, Pochon CHA University, College of Medicine, Kumi Cha hospital, 855 Hyungok Dong, Kumi 730-040, Korea.
Tel. 82-54-450-9738 Fax. 82-54-450-9740 E-mail: khbyun8092@hananet.net