



가 가

(CT)

6 가 1

24 6

가

가 (Fig. 1F).

(air - fluid level)

가 (Fig. 1A).

(nasogastric tube)

300ml

(pyloric antrum)가

(duodenum) 가 (Fig. 1B).

가 (anterior type)

(organoaxial type)

(mesenteroaxial type)

180 180

(1, 2).

Brouhard 3 (3).

(gastric cardia)가 (Fig. 1C).

(CT)

가

(Fig. 1D, E).

가

가

가 (6).

(diaphragmatic her - nia), (paraesophageal hernia), (esophageal eventuration), (wandering

30 - 60 (gastro - colic liga - 가

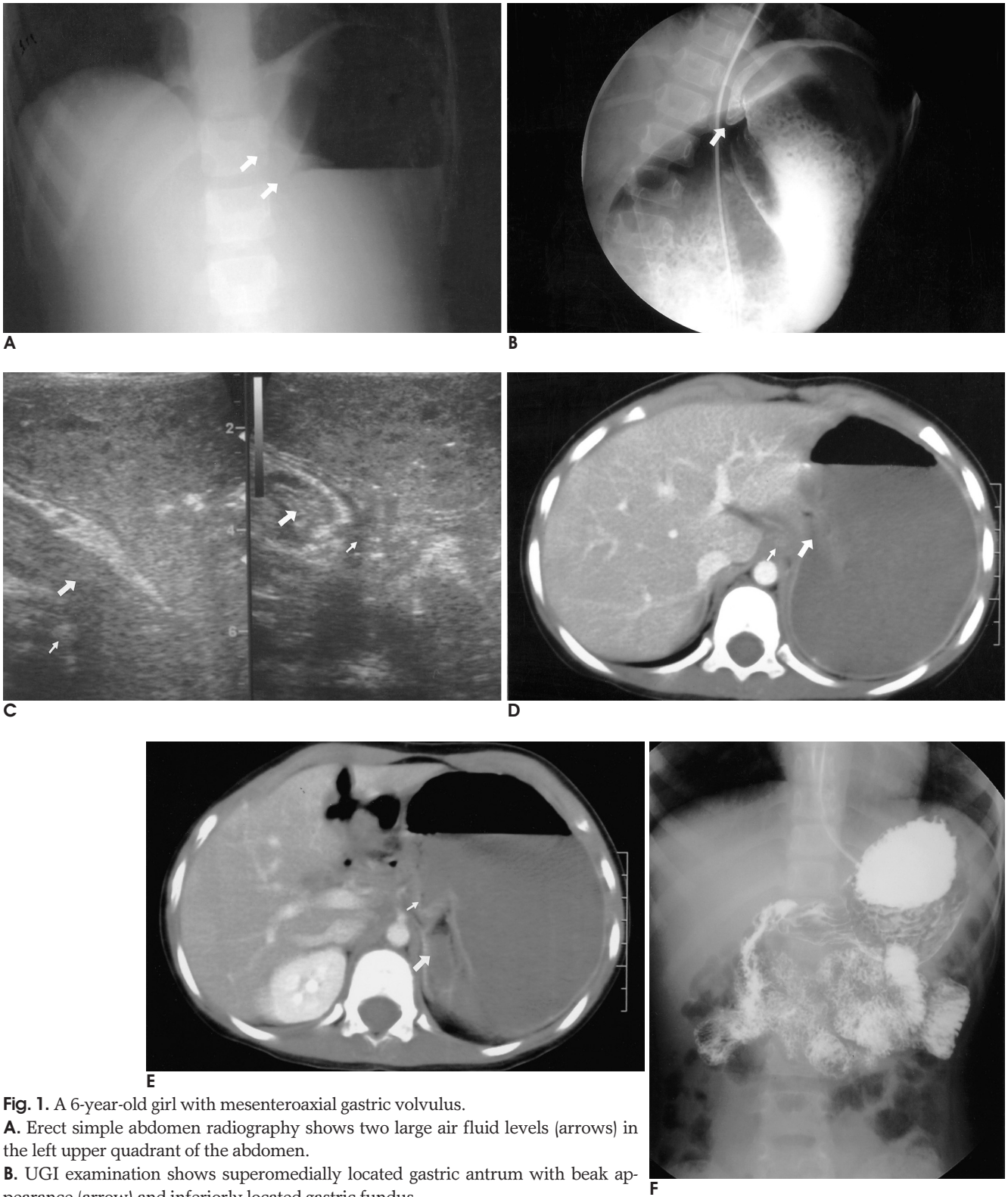
ment)

가

가

1

2004 6 30 2004 9 30



**Fig. 1.** A 6-year-old girl with mesenteroaxial gastric volvulus.

**A.** Erect simple abdomen radiography shows two large air fluid levels (arrows) in the left upper quadrant of the abdomen.

**B.** UGI examination shows superomedially located gastric antrum with beak appearance (arrow) and inferiorly located gastric fundus.

**C.** The gastric antrum (thick arrow) is seen at the superoanterior side of the esophagogastric junction (thin arrow) on transverse ultrasonographic scan. The gastric cardiac portion (thin arrow) connected with esophagogastric junction is crossing the gastric antrum (thick arrow) on a more inferior oblique transverse ultrasonographic scan.

**D.** The gastric antrum (thick arrow) is seen at the superoanterior side of the esophagogastric junction (thin arrow) on axial CT images.

**E.** The gastric cardiac portion (thin arrow) connected with esophagogastric junction is crossing the gastric antrum (thick arrow) on a more inferior image.

**F.** Follow-up UGIS shows the normal gastric antral location and good passage of the contrast medium to the duodenum.

spleen)

가

(4, 5).

가

(crossing sign)

,

가

,

CT

가

가

(2).

60%

,

6

가

(1, 10).

(greater curvature)

,

(lesser curvature)

,

가

(1).

.

30%

CT

,

가

Miller

(5).

,

가

가

가

,

(1).

가

가

(gastric outlet obstruction)

,

가

CT

가

.

Cherukupalli

CT

(gastric fundus)

가

(transition line)

(7), Matsuzaki

-

가

가

(peanut)

peanut sign

CT

(8). ‘ ’

CT

,

,

(9).

2001;45:79-82

가

1. Buonomo C, Taylor GA, Share JC, Kirks DR. *Gastrointestinal tract*. In: Kirks DR, Griscom NT. *Practical pediatric imaging: diagnostic radiology of infants and children* 3rd ed. Philadelphia, pa; Lippincott-Raven, 1998;908-911
2. Wastell C, Ellis H. Volvulus of the stomach a review of a report 8 cases. *Br J Surg* 1971;58:557-562
3. Borchardt M. Zun pathologie and therapie des mangevolvulus. *Arch Klin Chir* 1904;74:243-260
4. Park WH, Choi SO, Suh SJ. Pediatric gastric volvulus. *J Korean Med Sci* 1992;7:258-263
5. Miller DL, Pasquale MD, Seneca RP, Hodin E. Gastric volvulus in the pediatric population. *Arch Surg* 1991;126:1146-1149
6. Askew AR. Treatment of acute and chronic gastric volvulus. *Ann R Coll Surg Engl* 1978;60:326-328
7. Cherukupalli C, Khaneja S, Bankulla P, Schein M. CT diagnosis of acute gastric volulus. *Dig Surg* 2003;20:497-499
8. Matsuzaki Y, Asai M, Okura T, Tamura R. Ultrasonography of gastric volvulus "peanut sign". *Intern Med* 2001 Jan;40:23-27
9. , , , , , , , .  
2004;50:123-126
10. , , , , , , , . : 2

## **Recurrent Pediatric Mesenteroaxial Gastric Volvulus: Case Report<sup>1</sup>**

### **Focusing on Ultrasonographic and CT Findings**

Hyun Jun Choi, M.D., Jun Hyun Yun, M.D., Ji Hyeo Choi, M.D.,  
Ju Hyun Im, M.D., Se jong Kim, M.D., Byung Ran Park, M.D.

*<sup>1</sup>Department of Diagnostic Radiology, Gwangju Christian Hospital*

Gastric volvulus is a rare condition, and it is classified as the organoaxial or mesentericaxial type according to the axis of rotation. We experienced 1 case of pediatric recurrent mesenteroaxial gastric volvulus and we report here the ultrasonographic and CT findings.

**Index words :** Stomach, volvulus  
Children, gastrointestinal tract  
Stomach, US  
Stomach, CT

Address reprint requests to : Hyun Jun Choi, M.D., Department of Diagnostic Radiology, Gwangju Christian Hospital,  
264 Yanglim-dong, Nam-gu, Gwangju 503-715, Korea.  
Tel. 82-62-650-5196 Fax. 82-62-671-7447 E-mail: chjchj12@hanmail.net