



Seung Woo Yang, MD, PhD^{1,*},
Su Hyun Chae, MD^{1,*},
So Ra Kim, MD¹,
Young Hee Hong, MD¹,
Meeri Dong, MD¹,
Hee Sun Kim, MD, PhD²,
Han-Sung Kwon, MD, PhD¹,
In-Sook Sohn, MD, PhD¹,
Han-Sung Hwang, MD, PhD¹

¹Division of Maternal and Fetal
Medicine, Department of Obstetrics
and Gynecology, Research Institute of
Medical Science, Konkuk University
School of Medicine, Seoul;

²Department of Obstetrics and
Gynecology, Ilsan Paik Hospital, Inje
University College of Medicine,
Goyang, Korea

*These authors contributed equally
to this work.

Received: 19 February 2019

Revised: 13 April 2019

Accepted: 10 June 2019

Correspondence to

Han-Sung Hwang, MD, PhD
Division of Maternal and Fetal
Medicine, Department of Obstetrics
and Gynecology, Research Institute
of Medical Science, Konkuk University
School of Medicine, 120 Neungdong-
ro, Gwangjin-gu, Seoul 05029, Korea

Tel: +82-2-2030-7747

Fax: +82-2-2030-7748

E-mail: hwanghs@kuh.ac.kr

Copyright© 2019 by The Korean Society
of Perinatology

This is an Open Access article distributed
under the terms of the Creative Com-
mons Attribution Non-Commercial
License ([http://creativecommons.org/
license/by-nc/4.0/](http://creativecommons.org/licenses/by-nc/4.0/)), which permits
unrestricted non-commercial use,
distribution, and reproduction in any
medium, provided that the original work
is properly cited.

Clinical Significance of Fetal Subcutaneous Thickness via Ultrasonography Biometry in the Third Trimester for Estimating Fetal Birth Weight

Objective: In Korean population, information is lacking regarding fetal subcutaneous tissue thickness (SCTT) detected during pregnancy in the normal maternal condition. Thus, the aim of this study is to evaluate SCTT in the basic fetal biometry measurement plane, and to identify the clinical significance of SCTT in estimating fetal weight.

Methods: In this retrospective observational study, 856 term pregnant women were recruited between 1st January 2013 and 31st December 2015. Estimated fetal weight (EFW) and fetal SCTT were measured routine ultrasonography within one week before delivery. The women were divided in two groups: SCTT group (n=46) and non-SCTT group (n=810). Pregnancy outcomes including birth weight (BW) and EFW were compared between the two groups.

Results: The incidence of SCTT was 5.4% and no significant differences in parity, maternal age, maternal pre-pregnancy body mass index or gestational age at delivery were found between the groups. EFW, BW, amniotic fluid index, and cesarean section rate were higher in the SCTT group than in the non-SCTT group. The difference between EFW and BW was only significant in the SCTT group. Moreover, SCTT and EFW were positively correlated with BW (SCTT group: EFW 3,460±472 g vs. BW 3,779±496 g, $P=0.013$; non-SCTT group: EFW 3,011±436 g vs. BW 3,090±468 g, $P=0.324$).

Conclusion: Fetal SCTT detected during routine biometric ultrasonography evaluation in the third trimester of pregnancy could suggest larger BW than EFW. Therefore, physicians should pay careful attention in such cases during assessments for delivery.

Key Words: Birth weight, Fetal weight, Subcutaneous tissue, Pregnancy trimester, third, Ultrasonography

Introduction

Ultrasonography is widely used for the prenatal evaluation of fetal weight, achieved through various morphometric formulae. Most of these formulae combine basic biometric parameters such as biparietal diameter (BPD), head circumference (HC), abdominal circumference (AC) and femur length (FL).¹ The Hadlock and Shepard methods are the most commonly used, with a limitation of 62% sensitivity and 93% specificity for the Hadlock method for the prediction of fetal macrosomia, and a 21% sensitivity and 99% specificity for the Shepard method.² Consequently, other sonographic parameters with higher predictive values for fetal weight are required. Formulae using fetal parameters such as liver dimension, cerebellar diameter, kidney length, upper arm soft tissue thickness, femur volume, and cheek-to-cheek diameter have been developed but are not always accurate.²⁻⁵

Fat content is related to energy source and fat mass is often used in the evaluation of nutritional status. Fat constitutes 12 to 14% of the birth weight (BW) and has been demonstrated to

account for 46% of the variance noted in neonatal weight.⁶ Some previous studies assessed the relationship between ultrasonography fat mass and neonatal BW.^{7–9} These ultrasonography-derived anthropometric evaluations of fetal body fat composition showed significant correlations with BW and estimated fetal weight (EFW).

Fetal subcutaneous tissue thickness (SCTT) observed on ultrasonography examination in the second or third trimester has not been clarified, although it is an indicator of poor perinatal and neonatal outcomes. Moreover, there is a lack of information on SCTT detected during pregnancy in the normal maternal condition. Some studies focused on SCTT measurement for assessing BW;^{10,11} however, in these studies, specific areas such as mid-arm, mid-thigh, or subscapular fat mass were measured. Thus, we evaluated BW considering SCTT in Hadlock biometry method which are using in widely.

Therefore, in this study, we measured the third trimester SCTT on routine ultrasonography fetal biometry during normal pregnancy. We compare the perinatal and neonatal outcomes of fetuses and the differences between BW and EFW in fetuses with or without SCTT.

Methods

1. Patients

This was a retrospective observational study that enrolled pregnant women with fetuses of gestational ages between 37+0 and 41+6 weeks. Gestational age was determined based on the last menstrual period and confirmed via an early ultrasonography scan in all cases. The women visited the outpatient obstetrics ultrasonography clinic of Konkuk University Medical Center between 1st January 2013 and 31st December 2015. The inclusion criteria were a healthy singleton pregnancy, the absence of fetal anomalies, and the absence of abnormalities during delivery. The exclusion criteria were preterm delivery, multiple pregnancies, preeclampsia, maternal diabetes mellitus, maternal gestational diabetes mellitus, maternal chronic hypertension, fetal growth restriction, and fetal anomalies. In total, 856 women were recruited and divided in two groups as follows: SCTT group (n=46) and non-SCTT group (n=810).

2. Ultrasonography scans

Data from routine ultrasonography examinations performed the week before delivery were reviewed and compared. Ultrasonography biometric parameters were measured, including BPD, HC, AC, FL, and humerus length (HL) to calculate EFW. Additionally, SCTT was defined as the thickest inner-to-inner distance of sonolucent areas under the skin level in the routine biometric parameters of fetal BPD, HC, AC, FL and HL during ultrasonography measurement. All measured values were averaged with respect to each individual. If SCTT was observed in two or more sites during measurement, the average SCTT was calculated (Fig. 1). Positive SCTT group was defined as prominent SCTT measurement group. Negative SCTT group was defined as non-measurable SCTT group due to absent or minimal to visualization. This study was approved by the Institutional Review Board of Konkuk University Hospital (project number: KUH1040062).

3. Statistical analysis

Differences in clinical characteristics and neonatal outcomes were analyzed using the Chi-squared test and Mann-Whitney *U* test. To compare differences between BW and EFW, the Wilcoxon signed-rank test and paired *t*-test were used. To assess the relationship among BW, SCTT, and EFW, Spearman's correlation was used, and linear regression was used for the equation model of BW. The data analysis was performed using the Statistical Package for Social Sciences for Windows, version 18.0 (SPSS Inc., Chicago, IL, USA). A *P*-value of <0.05 was considered statistically significant.

Results

The incidence of SCTT was 5.4% and the averaged SCTT ranged from 2.6 to 13.4 mm. The clinical characteristics of both groups before delivery are summarized in Table 1. EFW determined by ultrasonography, amniotic fluid index, and cesarean section rate was higher in the SCTT group than in the non-SCTT group. No significant differences in parity, maternal age, maternal pre-pregnancy body mass index, maternal glucose levels, or gestational age at delivery were found between the groups. Uterine artery Doppler ultrasonography and fetal middle cerebral artery Doppler ultrasonography showed no abnormal

findings in either group. The postpartum outcomes of the SCTT and non-SCTT groups are summarized in Table 2. No significant differences were found in Apgar score, neonatal intensive care

Table 1. Clinical Characteristics of the SCTT and non-SCTT Groups before Delivery

Characteristics	SCTT (n=46)	Non-SCTT (n=810)	P-value
Maternal age (years)	33 (23-42)	32 (23-43)	0.657*
Parity	1 (0-2)	1 (0-2)	0.215*
BMI (kg/m ²)	23 (18-40)	22 (16-41)	0.121*
Gestational age at delivery (weeks)	39 (37-41)	39 (37-41)	0.994*
Glucose (mg/dL)	92 (62-217)	89 (58-150)	0.114*
EFW (g)	3,543 (2,338-4,857)	3,005 (2,277-3,843)	<0.001*
AFI (cm)	14.8 (6.5-26.7)	12.5 (6.0-20.9)	<0.002*
Cesarean section	27 (58.7)	352 (43.5)	0.015 [†]

Values are presented as median (range) or number (%). A *P*-value of <0.05 was considered significant. Glucose level estimated at 36-37 gestational weeks.

Abbreviations: SCTT, subcutaneous tissue thickness; BMI, body mass index; EFW, estimated fetal weight; AFI, amniotic fluid index.

*Mann-Whitney *U* test.

[†]Chi-squared test.

unit admission rate, meconium staining, or neonatal hemoglobin levels between the groups. However, neonatal BW was significantly higher in the SCTT group than in the non-SCTT group (3,714 vs. 3,140 g, *P*<0.001). Differences between the mean EFW determined by ultrasonography and BW were statistically noted in the SCTT group but not in the non-SCTT group (SCTT group: EFW 3,460±472 g, BW 3,779±496 g, *P*=0.013; non-SCTT

Table 2. Postpartum Outcomes in the SCTT Group and Non-SCTT Group

Outcomes	SCTT (n=46)	Non-SCTT (n=810)	P-value
Birth weight (g)	3,717 (2,480-5,265)	3,140 (2,425-4,100)	<0.001
1-minute Apgar score	8 (3-9)	8 (4-9)	0.217
5-minute Apgar score	9 (4-10)	9 (6-10)	0.458
NICU admission	3 (6.5)	25 (3.1)	0.124
Meconium staining	1 (2.2)	42 (5.2)	0.398
Neonatal hemoglobin	14.6 (12.5-16.2)	15.0 (13.5-16.0)	0.568

Values are presented as median (range) or number (%). A *P*-value of <0.05 was considered significant using Mann-Whitney *U* test or Chi-squared test.

Abbreviations: SCTT, subcutaneous tissue thickness; NICU, neonatal intensive care unit.

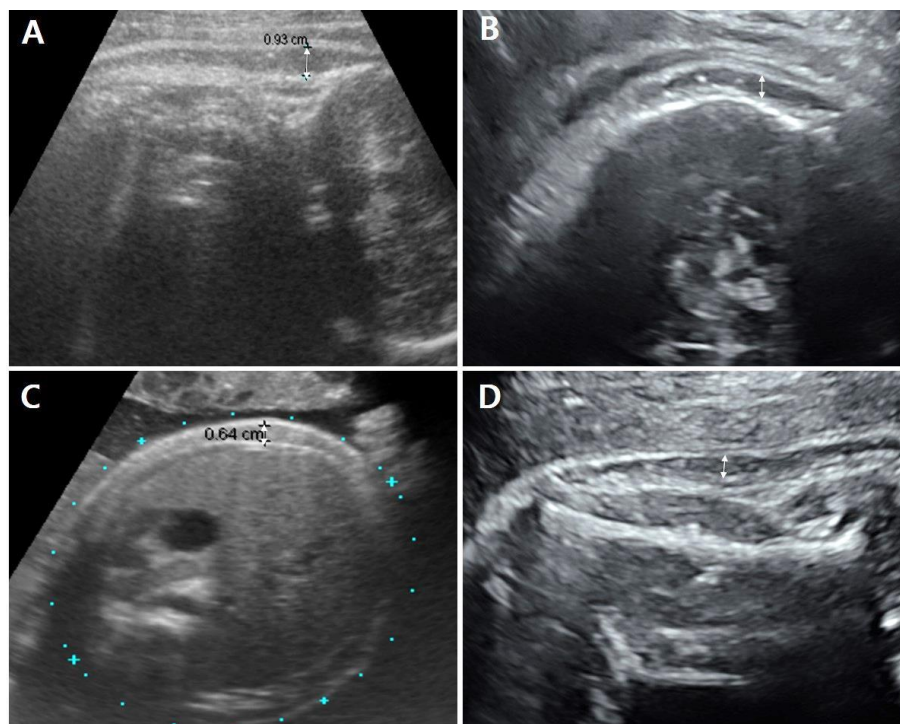


Fig. 1. Subcutaneous tissue thickness detected by ultrasonography in various planes (A, C: 37+2 weeks, male; B, D: 39+4 weeks, female). (A) Fetal ultrasonography image in the sagittal view at the posterior neck level, 9.3 mm. (B) Fetal ultrasonography image recorded in the plane used to determine humerus length, 3.2 mm. (C) Transverse view of the abdominal circumference, 6.4 mm. (D) Fetal ultrasonography image recorded in the plane used to determine head circumference, 3.6 mm.

Table 3. Comparison of EFW by Ultrasonography with BW in Each Group

Group	EFW (g)	BW (g)	P-value
SCTT (n=46)	3,460±472	3,779±496	0.013*
Non-SCTT (n=810)	3,011±436	3,090±468	0.324†

Values are presented as mean±standard deviation. A *P*-value of <0.05 was considered significant.

Abbreviations: EFW, estimated fetal weight; BW, birth weight; SCTT, subcutaneous tissue thickness.

*Wilcoxon signed-rank test.

†Paired *t*-test.

Table 4. Relationship between BW, SCTT, and EFW by Linear Regression Analysis for BW Estimation

Variable	B	SE	Beta	t-value	P-value
Constant	623.8	266.6		2.34	0.024
SCTT	33.0	19.3	0.132	1.711	0.044
EFW	0.855	0.080	0.825	10.667	<0.001
	R	Adjusted R ²	F	P-value	
Model summary	0.883	0.770	76.3	<0.001	
Regression equation	BW=623.8+0.855*EFW+33.0*SCTT				

A *P*-value of <0.05 was considered significant.

Abbreviations: BW, birth weight; SCTT, subcutaneous tissue thickness; EFW, estimated fetal weight.

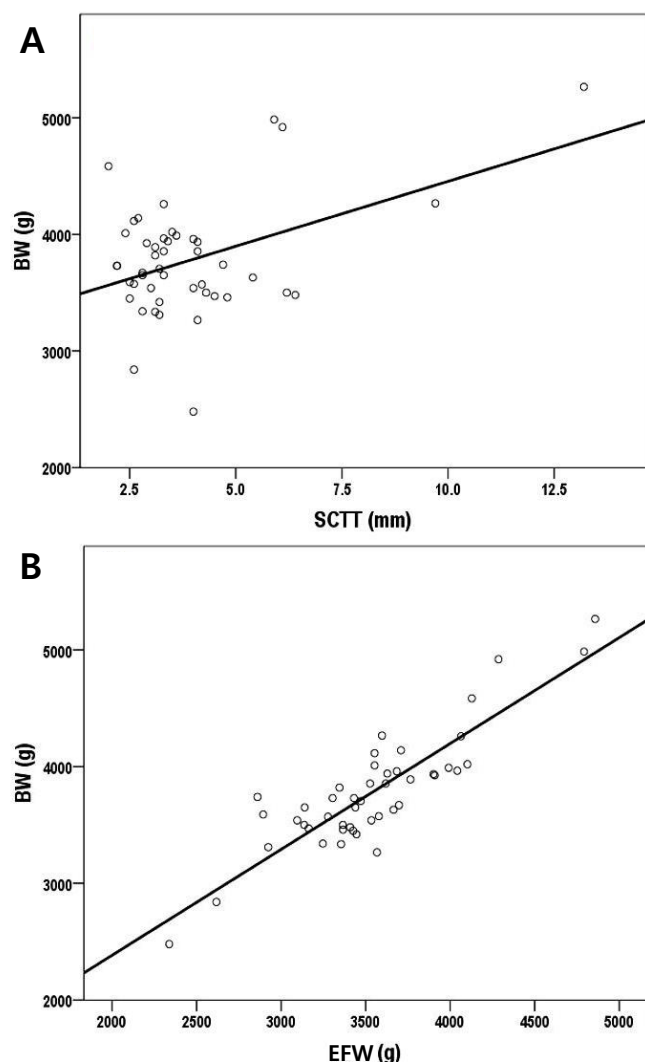


Fig. 2. Correlation between BW and EFW or SCTT. The correlation coefficient in each graph was (A) $r=0.446$, $P=0.002$ (B) $r=0.875$, $P<0.001$ by Spearman's rank correlation test. BW, birth weight; EFW, estimated fetal weight; SCTT, subcutaneous tissue thickness.

group; EFW 3,011±436 g, BW 3,090±468 g, $P=0.324$) (Table 3). Moreover, in the SCTT group, positive correlations were noted between BW and EFW or SCTT (EFW: $r=0.443$, $P<0.001$; SCTT: $r=0.443$, $P<0.001$) (Fig. 2). The regression model equation was as follows: $BW=623.8+0.855*EFW+33.0*SCTT$ (adjusted $R^2=0.770$, $F=76.3$, $P<0.001$) (Table 4).

Discussion

Various ultrasonography formulae have been used to estimate fetal weight. EFW is generally calculated using the Hadlock formula, which involves ultrasonography parameters such as BPD, HC, AC, and FL.¹² However, EFW and especially AC show a wide error range ($\pm 10\%$), which may affect clinical evaluation.^{11,13,14} This error may have several contributing factors. For one, fat constitutes 12 to 14% of BW,¹⁵ and fetal fat tissue is detected on ultrasonography as SCTT, seen as hypoechoic lesions under the skin, similar to fetal SCTT. Therefore, estimating the amount of subcutaneous fat tissue via ultrasonography may be useful for detecting fetal growth abnormalities.

Several studies suggest that various ultrasonography parameters related to soft tissue thickness are useful for fetal weight estimation.^{2,4,5,16,17} Forouzmehr et al.¹⁶ showed that a strong positive correlation exists between fetal abdominal soft tissue thickness in the third trimester and fetal weight. Chen et al.¹⁷ demonstrated that soft tissue thickness at the fetus's abdomen and subscapular area is strongly correlated with fetal age. In the case of SCTT, Larciprete et al.^{10,11} suggested that mid-arm, mid-thigh, abdominal, and subscapular SCTT were gestational age-specific

reference values for fetal weight. Based on these studies, several EFW calculation formulae have been suggested.¹⁸⁻²⁰ However, these formulae have a large risk of error because identifying the correct ultrasonography plane is difficult with these techniques, and the observations may vary with physician ability. Therefore, we suggest that the ultrasonographic plane routinely used to determine BPD, HC, AC, FL, and HL be used to examine SCTT thickness in the third trimester.

In this study, the SCTT group showed an increased EFW and amniotic fluid index compared to the non-SCTT group. BW were more increased in the SCTT group than in the non-SCTT group. Because of the increased BW, the cesarean section rate was also increased in the SCTT group. Most of the cesarean sections were due to cephalopelvic disproportion. The difference between EFW and BW was significant only in the SCTT group. Additionally, since SCTT and EFW were significantly correlated with BW, an estimated equation for BW using EFW and SCTT was feasible. Therefore, appropriate care should be exercised if fetal SCTT is detected in third trimester biometry. Based on our result, this finding could be a sign that the weight of the fetus at delivery may be higher than that expected based on EFW.

This study was limited by its retrospective design and small size. Thus, analysis based on maternal characteristics including parity and indication of cesarean section will be necessary. Although, there was no difference in neonatal outcomes between the two groups in this study, a future large scale study could estimate adverse neonatal outcomes following the increased incidence of cephalopelvic disproportion and macrosomia. However, this study suggests a definition of SCTT based on the more popular fetal biometric evaluation of the Hadlock formula as against other formulae including specific measures such as mid-arm, mid-thigh or subscapular fat mass. For further study, we have designed a prospective longitudinal study of SCTT from its initial appearance and will suggest cut-off values for macrosomia. Adipose tissues are accumulated in the fetal subcutaneous area²¹ and some studies have indicated an association between maternal gestational diabetes mellitus or diabetes mellitus and fetal SCTT.^{22,23} Thus, application with respect to maternal gestational diabetes mellitus or diabetes mellitus in pregnancy would be necessary.

In conclusion, fetal SCTT detected during routine biometric ultrasonography evaluation in the third trimester of pregnancy could suggest larger BW than EFW. Therefore, physicians should

pay careful attention in such cases during assessments for delivery.

Acknowledgement

This research was supported by the Basic Science Research Program through the National Research Foundation of Korea (NRF) funded by the Ministry of Science, ICT & Future Planning (NRF-2017R1C1B2010487).

This research was supported by a grant of the Korea Health Technology R&D Project through the Korea Health Industry Development Institute (KHIDI), funded by the Ministry of Health & Welfare, Republic of Korea (grant number: HI17C1713).

References

- 1) Warska A, Maliszewska A, Wnuk A, Szyszka B, Sawicki W, Cendrowski K. Current knowledge on the use of ultrasound measurements of fetal soft tissues for the assessment of pregnancy development. *J Ultrason* 2018;18:50-5.
- 2) Rotmensch S, Celentano C, Liberati M, Malinge G, Sadan O, Bellati U, et al. Screening efficacy of the subcutaneous tissue width/femur length ratio for fetal macrosomia in the non-diabetic pregnancy. *Ultrasound Obstet Gynecol* 1999;13:340-4.
- 3) Chauhan SP, West DJ, Scardo JA, Boyd JM, Joiner J, Hendrix NW. Ante-partum detection of macrosomic fetus: clinical versus sonographic, including soft-tissue measurements. *Obstet Gynecol* 2000;95:639-42.
- 4) Luo H, Zhou S, Yang T, Liu S, Xu H. Ultrasonic multiple measurement estimation of fetal weight in parturient. *Hua Xi Yi Ke Da Xue Xue Bao* 2001; 32:618-20.
- 5) Lee W, Balasubramaniam M, Deter RL, Yeo L, Hassan SS, Gotsch F, et al. New fetal weight estimation models using fractional limb volume. *Ultrasound Obstet Gynecol* 2009;34:556-65.
- 6) Catalano PM, Tyzbir ED, Allen SR, McBean JH, McAuliffe TL. Evaluation of fetal growth by estimation of neonatal body composition. *Obstet Gynecol* 1992;79:46-50.
- 7) Galan HL, Rigano S, Radaelli T, Cetin I, Bozzo M, Chyu J, et al. Reduction of subcutaneous mass, but not lean mass, in normal fetuses in Denver, Colorado. *Am J Obstet Gynecol* 2001;185:839-44.
- 8) Bernstein IM, Goran MI, Amini SB, Catalano PM. Differential growth of fetal tissues during the second half of pregnancy. *Am J Obstet Gynecol* 1997;176:28-32.
- 9) Maruotti GM, Saccone G, Martinelli P. Third trimester ultrasound soft-tissue measurements accurately predicts macrosomia. *J Matern Fetal Neonatal Med* 2017;30:972-6.
- 10) Lariciprete G, Valensise H, Vasapollo B, Novelli GP, Parretti E, Altomare F, et

- al. Fetal subcutaneous tissue thickness (SCTT) in healthy and gestational diabetic pregnancies. *Ultrasound Obstet Gynecol* 2003;22:591-7.
- 11) Larciprete G, Valensise H, Barbati G, Di Pierro G, Jarvis S, Deaibess T, et al. Ultrasound-determined fetal subcutaneous tissue thickness for a birth-weight prediction model. *J Obstet Gynaecol Res* 2007;33:635-40.
 - 12) Hadlock FP, Deter RL, Harrist RB, Park SK. Estimating fetal age: computer-assisted analysis of multiple fetal growth parameters. *Radiology* 1984;152:497-501.
 - 13) Chang TC, Robson SC, Boys RJ, Spencer JA. Prediction of the small for gestational age infant: which ultrasonic measurement is best? *Obstet Gynecol* 1992;80:1030-8.
 - 14) Skovron ML, Berkowitz GS, Lapinski RH, Kim JM, Chitkara U. Evaluation of early third-trimester ultrasound screening for intrauterine growth retardation. *J Ultrasound Med* 1991;10:153-9.
 - 15) Spady DW, Atrens MA, Szymanski WA. Effects of mother's smoking on their infants' body composition as determined by total body potassium. *Pediatr Res* 1986;20:716-9.
 - 16) Forouzmehr A, Shahrokh A, Moulaei M. Estimation of birth weight using sonographically measured fetal abdominal subcutaneous tissue thickness. *Iran J Radiol* 2004;2:48-9.
 - 17) Chen L, Wu JJ, Chen XH, Cao L, Wu Y, Zhu LJ, et al. Measurement of fetal abdominal and subscapular subcutaneous tissue thickness during pregnancy to predict macrosomia: a pilot study. *PLoS One* 2014;9:e93077.
 - 18) Abuelghar W, Khairy A, El Bishry G, Ellaithy M, Abd-Elhamid T. Fetal mid-thigh soft-tissue thickness: a novel method for fetal weight estimation. *Arch Gynecol Obstet* 2014;290:1101-8.
 - 19) Scioscia M, Scioscia F, Vimercati A, Caradonna F, Nardelli C, Pinto LR, et al. Estimation of fetal weight by measurement of fetal thigh soft-tissue thickness in the late third trimester. *Ultrasound Obstet Gynecol* 2008;31:314-20.
 - 20) Kalantari M, Negahdari A, Roknsharifi S, Qorbani M. A new formula for estimating fetal weight: the impression of biparietal diameter, abdominal circumference, mid-thigh soft tissue thickness and femoral length on birth weight. *Iran J Reprod Med* 2013;11:933-8.
 - 21) Catalano PM, Thomas A, Huston-Presley L, Amini SB. Increased fetal adiposity: a very sensitive marker of abnormal in utero development. *Am J Obstet Gynecol* 2003;189:1698-704.
 - 22) Araujo Júnior E, Peixoto AB, Zamarian AC, Elito Júnior J, Tonni G. Macrosomia. *Best Pract Res Clin Obstet Gynaecol* 2017;38:83-96.
 - 23) Tantanasis T, Daniilidis A, Giannoulis C, Tzafettas M, Dinas K, Loufopoulos A, et al. Sonographic assessment of fetal subcutaneous fat tissue thickness as an indicator of gestational diabetes. *Eur J Obstet Gynecol Reprod Biol* 2010;152:157-62.