

## Original Research



# Protective effect of *Phyllostachys edulis* (Carrière) J. Houz against chronic ethanol-induced cognitive impairment *in vivo*

Jiyeon Kim <sup>1\*</sup>, Ji Myung Choi <sup>2\*</sup>, Ji-Hyun Kim <sup>1</sup>, Qi Qi Pang <sup>1</sup>, Jung Min Oh <sup>1</sup>,  
Ji Hyun Kim <sup>3</sup>, Hyun Young Kim <sup>3§</sup>, and Eun Ju Cho <sup>1§</sup>

<sup>1</sup>Department of Food Science and Nutrition, Pusan National University, Busan 46241, Korea

<sup>2</sup>Department of Food and Nutrition, Kyungsung University, Busan 48434, Korea

<sup>3</sup>Department of Food Science and Nutrition, Gyeongsang National University, Jinju 52725, Korea

## OPEN ACCESS

**Received:** Feb 21, 2024

**Revised:** Apr 8, 2024

**Accepted:** May 9, 2024

**Published online:** May 16, 2024

### \*Corresponding Authors:

**Hyun Young Kim**

Department of Food Science and Nutrition,  
Gyeongsang National University, 33 Dongjin-  
ro, Jinju 52725, Korea.

Tel. +82-55-772-3277

Email. Hyunyong.kim@gnu.ac.kr

**Eun Ju Cho**

Department of Food Science and Nutrition,  
Pusan National University, 2 Busandaehak-ro  
63beon-gil, Geumjeong-gu, Busan 46241,  
Korea.

Tel. +82-51-510-2837

Email. ejcho@pusan.ac.kr

\*These authors contributed equally to this work.

©2024 The Korean Nutrition Society and the Korean Society of Community Nutrition  
This is an Open Access article distributed under the terms of the Creative Commons Attribution Non-Commercial License (<https://creativecommons.org/licenses/by-nc/4.0/>) which permits unrestricted non-commercial use, distribution, and reproduction in any medium, provided the original work is properly cited.

### ORCID iDs

Jiyeon Kim

<https://orcid.org/0009-0002-0587-4623>

Ji Myung Choi

<https://orcid.org/0000-0002-8869-9367>

## ABSTRACT

**BACKGROUND/OBJECTIVES:** Chronic alcohol consumption causes oxidative stress in the body, which may accumulate excessively and cause a decline in memory; problem-solving, learning, and exercise abilities; and permanent damage to brain structure and function. Consequently, chronic alcohol consumption can cause alcohol-related diseases.

**MATERIALS/METHODS:** In this study, the protective effects of *Phyllostachys edulis* (Carrière) J. Houz (PE) against alcohol-induced neuroinflammation and cognitive impairment were evaluated using a mouse model. Alcohol (16%, 5 g/kg/day for 6 weeks) and PE (100, 250, and 500 mg/kg/day for 21 days) were administered intragastrically to mice.







**RESULTS:** PE showed a protective effect against memory deficits and cognitive dysfunction caused by alcohol consumption, confirmed through behavioral tests such as the T-maze, object recognition, and Morris water maze tests. Additionally, PE attenuated oxidative stress by reducing lipid oxidation, nitric oxide, and reactive oxygen species levels in the mice's brains, livers, and kidneys. Improvement of neurotrophic factors and downregulation of apoptosis-related proteins were confirmed in the brains of mice fed low and medium concentrations of PE. Additionally, expression of antioxidant enzyme-related proteins *GPx-1* and *SOD-1* was enhanced in the liver of PE-treated mice, related to their inhibitory effect on oxidative stress.

**CONCLUSION:** This suggests that PE has both neuroregenerative and antioxidant effects. Collectively, these behavioral and histological results confirmed that PE could improve alcohol-induced cognitive deficits through brain neurotrophic and apoptosis protection and modulation of oxidative stress.

**Keywords:** Alcohol consumption; cognitive impairment; oxidative stress

## INTRODUCTION

Alcohol-related dementia, characterized by cognitive impairment due to chronic and excessive alcohol consumption, presents a major global public health concern. Alcoholism is one of the causes of mental illness [1], and chronic alcohol consumption causes a decline in memory; problem-solving, learning, and motor abilities; and permanent

Ji-Hyun Kim   
<https://orcid.org/0000-0001-8232-2932>  
 Qi Qi Pang   
<https://orcid.org/0000-0001-6831-7061>  
 Jung Min Oh   
<https://orcid.org/0009-0001-5620-8121>  
 Ji Hyun Kim   
<https://orcid.org/0000-0001-6617-2129>  
 Hyun Young Kim   
<https://orcid.org/0000-0003-2241-2877>  
 Eun Ju Cho   
<https://orcid.org/0000-0003-4282-3219>

#### Conflict of Interest

The authors declare no potential conflicts of interests.

#### Author Contributions

Conceptualization: Kim HY, Cho EJ; Formal analysis: Kim J, Choi JM, Kim JH<sup>1</sup>; Funding acquisition: Kim HY, Cho EJ; Investigation: Kim J, Pang QQ, Oh JM; Methodology: Kim J, Choi JM, Kim JH<sup>2</sup>; Supervision: Kim HY, Cho EJ; Writing - original draft: Kim J; Writing - review & editing: Choi JM, Cho EJ.

Kim JH<sup>1</sup>, Ji-Hyun Kim; Kim JH<sup>2</sup>, Ji Hyun Kim.

damage to the structure and function of brain tissue. While several hypotheses propose the pathophysiological mechanism through which alcohol causes brain damage, it is known to be due to the toxicity of ethanol itself, damage to liver function, and the interaction of these factors [2]. A liver directly damaged by ethanol loses its detoxification function, and the accumulation of ammonia affects cerebral blood flow, metabolism, and astrocyte function, not only affecting the dopamine system but also increasing oxidative stress and causing neurotoxicity [3]. Additionally, acetaldehyde by-products or oxidative stress causes inflammatory liver damage and triggers a wide range of immune responses, leading to inflammation and neuronal degeneration of the central nervous system [4].

Numerous types of bamboo are grown and cultivated in Korea [5]. Among them, *Phyllostachys edulis* (Carrière) J. Houz (PE) is also called Maengjong bamboo or Moso bamboo. It is one of the three major bamboos in Korea, along with Wangdae and Somdae, and is mainly cultivated in the southern region [6]. It is known to mainly eat bamboo shoots, which are young, soft shoots that sprout from bamboo stems [7]. Since ancient times, PE has been used as a folk remedy in oriental medicine [8]. It is said to be used to prevent constipation, relieve hangovers, freshen blood, treat stroke and sweating, and relieve fever and dry mouth [9]. To date, research on PE has focused on its anti-inflammatory [10], antibacterial [11], and anticancer activities [12,13] within bamboo leaves. Nevertheless, there is a notable absence of research focused on the physiological activities of PE.

Therefore, this study was conducted to investigate whether bamboo shoots improve alcohol-induced cognitive impairment in an *in vivo* mouse model. We also analyzed the protective mechanisms of bamboo shoots against inflammatory responses and oxidative stress generation.

## MATERIALS AND METHODS

### Reagents

Sodium chloride, 1.5 M tris-HCl, skim milk, glycine were obtained from LPS Solution Co. (Seoul, Korea). Ethyl alcohol was obtained from Duksan Pure Chemicals Co., Ltd. (Ansan, Korea). Griess reagent, and 2', 7'-dichlorofluorescein diacetate (DCF-DA) were purchased from Sigma Aldrich Co. (St. Louis, OK, USA). The protein markers and acrylamide were purchased from GenDEPOT Co. (Katy, TX, USA). Protein assay dye and 2× laemmli sample buffer were purchased from Bio-Rad Laboratories (Hercules, CA, USA). The protease inhibitor cocktail and polyvinylidene fluoride (PVDF) membranes were purchased from Merck Millipore Co. (Burlington, MA, USA). Radioimmunoprecipitation assay (RIPA) buffer was purchased from iNtRON Bio. (Seongnam, Korea). Two-mercaptoethanol was purchased from Biopure Co. (Cambridge, MA, USA). Sodium dodecyl sulfate (SDS) and thiobarbituric acid (TBA) were purchased from Thermo Fisher Scientific Co. (Waltham, MA, USA). Trichloroacetic acid (TCA) was purchased from Kanto Chemical Co. (Tokyo, Japan). Dimethyl sulfoxide was purchased from Daejung Co. (Siheung, Korea).

### Sample preparation

PE was selected as the 95% ethanol extract based on the *in vitro* radical scavenging activity in previous study. The ethanol extract of PE was stored at 4°C until use. All samples were diluted in drinking water to their respective concentrations (100, 250, and 500 mg/kg/day).

### Animals and experimental protocols

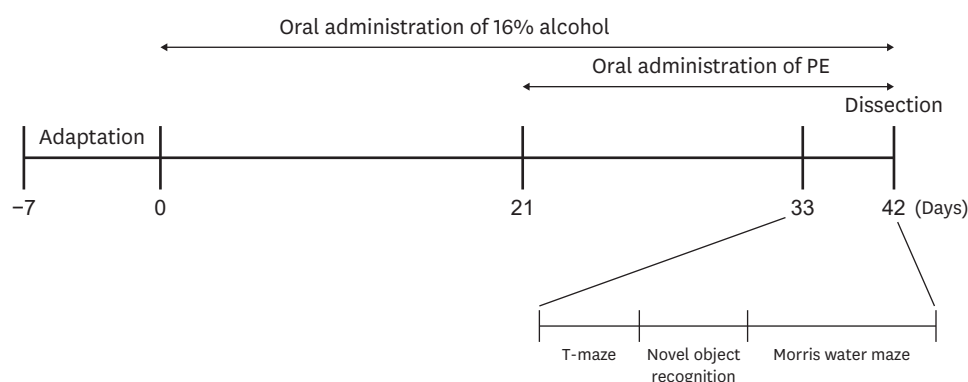
Seven-week-old male C57BL/6N mice were purchased from Orient, Inc. (Seongnam, Korea). Mice weighing 19–22 g were maintained in an animal laboratory under automatically controlled temperature ( $20 \pm 2^\circ\text{C}$ ), humidity ( $50 \pm 10\%$ ), and 12-h light-dark cycles. After a week of adaptation, the mice were divided into 5 groups (each group comprised 9 mice): 1) Normal, oral administration of drinking water; 2) Control, oral administration of 16% alcohol (5 g/kg/day); 3) PE100, oral administration of 16% alcohol (5 g/kg/day) + PE (100 mg/kg/day); 4) PE250, oral administration of 16% alcohol (5 g/kg/day) + PE (250 mg/kg/day); and 5) PE500, oral administration of 16% alcohol (5 g/kg/day) + PE (500 mg/kg/day). During the 6-week experiment period, 16% alcohol was provided to all groups except normal for the first 3 weeks. For the next 3 weeks, PE was orally administered to the treatment group. All mice could chow freely, and samples were provided by gastric gavage at a volume of 100  $\mu\text{L}$ . The experimental schedule is illustrated in **Fig. 1**. All experimental procedures were approved by the Institutional Animal Care and Use Committee of the Pusan National University (ED-PNU2021-0229).

### T-maze test

The T-maze test was performed to evaluate spatial memory ability, according to the procedures established by Montgomery [14]. In the maze challenge, the mice naturally took either the left or the right path within a T-shaped box. On the training day, each mouse was placed in the starting area with a blocked right passage and allowed to explore freely for 10 min. On the test day, after 24 h, the blocking wall was removed and the mice were allowed to explore both passages (old and new passages) for 10 min. The number of times each passage was entered was recorded, and spatial perception ability (%) was calculated. The space perceptive ability (%) was calculated as the ratio of new passage entries divided by the number of total maze entries, multiplied by 100. It was determined that the higher the proportion of new passages entered, the better a mouse's memory.

### Novel object recognition test

The novel object recognition test was used to evaluate the mice's cognitive performance in short-term memory [15]. The experiment was performed in a square black box measuring  $40 \times 40 \times 40$  cm. Two objects were placed in the box. On the training day, two identical objects were placed within the square field and the mice were placed at the middle of the box. Each mouse was allowed to freely touch both objects for 10 min, and the number of times it touched each object was recorded. On the test day, 24 h later, the mice were placed in the



**Fig. 1.** Experimental schedule of PE.

A behavioral experiment was conducted on the mice eight days before the end of the experiment. PE, *Phyllostachys edulis* (Carrière) J. Houz.

center of the box and allowed to explore for the same amount of time (10 min). However, unlike the in training day, one of the two objects had a different shape. The number of touches per object was recorded. The object recognition ability was expressed as the number of contacts exploring a new object divided by the total number of times a mouse touched the object, multiplied by 100.

### Morris water maze test

The water maze test, based on the experimental design by Morris [16], is a generally accepted method for testing cognitive function. This experiment was performed over four consecutive days. During this period, the escape latency and route of each mouse were recorded using a SMART video tracking system 3.0 (Panlab, Barcelona, Spain) and camera. The circular tank used in the experiment had a diameter of 150 cm and height of 60 cm. The tank was filled with water maintained at  $22 \pm 2^\circ\text{C}$ , and the platform was installed in one of the 4 quadrants after it was equally divided into 4 quadrants, with the center of the tank as a starting point. Water was filled up to 1 cm above the platform, and white paint was dissolved in the water to make the platform invisible. Training was performed thrice a day for 3 days, and the test was conducted on the fourth day. The mice were allowed to learn how to locate the hidden platform using visual tips around the pool. The mice were evenly placed in quadrants 2, 3, and 4 for each experiment, comprising three trials per day, and allowed to find the platform while swimming freely for 60 s. If a mouse reached the target platform within 60 s, the time was recorded in the program, and it remained there for 15 s. If a mouse did not reach the platform in time, it was guided to the platform and then kept there for 15 s to help it remember the platform location. On test day, the last of the 4 days, 3 different tests were conducted. The first experiment was conducted using the same procedures as in the last training session. In the second experiment, the mice were allowed to swim freely for the same duration with the target platform removed, and the time taken to find the quadrant where the platform was located was recorded. In the third experiment, we placed the platform in a pool filled with clear water and measured the time taken to reach the visible platform.

### Measurement of reactive oxygen species (ROS) generation

The ROS levels were measured using the DCF-DA assay [17]. Brain, liver, kidney and tissues homogenized with 50 mM phosphate-buffered saline (PBS) were reacted with 12.5 mM DCF-DA solution. The ROS levels were measured using a fluorescence spectrophotometer (FLUOstar OPTIMA, BMG LABTECH, Ortenberg, Germany). It had an excitation wavelength of 485 nm and an emission wavelength of 535 nm.

### Measurement of lipid peroxidation

Malondialdehyde (MDA) production was measured as described by Ohkawa *et al.* [18]. The dissected brain, liver, kidney and tissues were homogenized and centrifuged, then mixed with TBA Reactive Substances solution. The solution was produced by mixing 46 mM TBA, 920 mM TCA, 20% acetic acid, and distilled water. The solution was added to the tissue supernatant, boiled for 20 min to react, then a butanol:pyridine mixture (15:1) was added and centrifuged at 3,000 rpm for 20 min. The absorbance of the supernatant was measured at 540 nm using a microplate reader (LTEK, Seongnam, Korea). The tissue lipid peroxidation was calculated using an MDA standard curve.

### Measurement of nitric oxide (NO) production

NO production in homogenized brain, liver, kidney and tissues was measured according to the method described by Schmidt *et al.* [19]. The supernatant obtained after homogenization

and centrifugation was mixed with distilled water (1:1). The Griess reagent was added and incubated for 15 min at room temperature. The absorbance of the mixture was measured at 540 nm using a microplate reader (LTEK). The NO production value of the tissue was calculated using a NaNO<sub>2</sub> standard curve.

### Western blot analysis

The mice's brain and liver tissues were homogenized with a lysis buffer containing a protease inhibitor cocktail and RIPA buffer (1:99). Thereafter, the mixture was centrifuged at 12,000 rpm for 30 min, 4°C. The amount of protein in all supernatants was quantified using the Bradford protein assay. Subsequently, a western blot sample was prepared by adding a mixture of 2× laemmli buffer and 2-mercaptoethanol. Equal amounts of samples were loaded onto a 10% SDS polyacrylamide gel and electrophoresed for 2 h at 90 V. Thereafter, the samples were transferred to a PVDF membrane and blocked in 5% skim milk for 90 min. The membranes were then washed 5 times with PBS-T (100 mM PBS containing 0.1% Tween-20) and incubated with the primary antibody overnight. The primary antibodies used for protein expression assay were as follows: beta-actin (*β-actin*, 1:1,000; Cell Signaling Tech, Beverly, MA, USA), brain-derived neurotrophic factor (*BDNF*, 1:1,000; Abcam, Cambridge, UK), B-cell lymphoma 2 (*Bcl-2*, 1:500; Abcam), Bcl-2-associated X protein (*Bax*, 1:1,000; Cell Signaling Tech), Catalase (*CAT*, 1:500; Cell Signaling Tech), superoxide dismutase 1 (*SOD-1*, 1:500; Abcam), and glutathione peroxidase 1 (*GPx-1*, 1:500; Abcam). After the primary antibody reaction, the membranes were washed four times for 5 min with PBS-T and incubated in the appropriate secondary antibody with horseradish peroxidase conjugated for 1 h. The membranes were then scanned using a chemiluminescent imaging system (Davinch-K, Seoul, Korea) to measure protein expression. The measured results were analyzed using the ImageJ software.

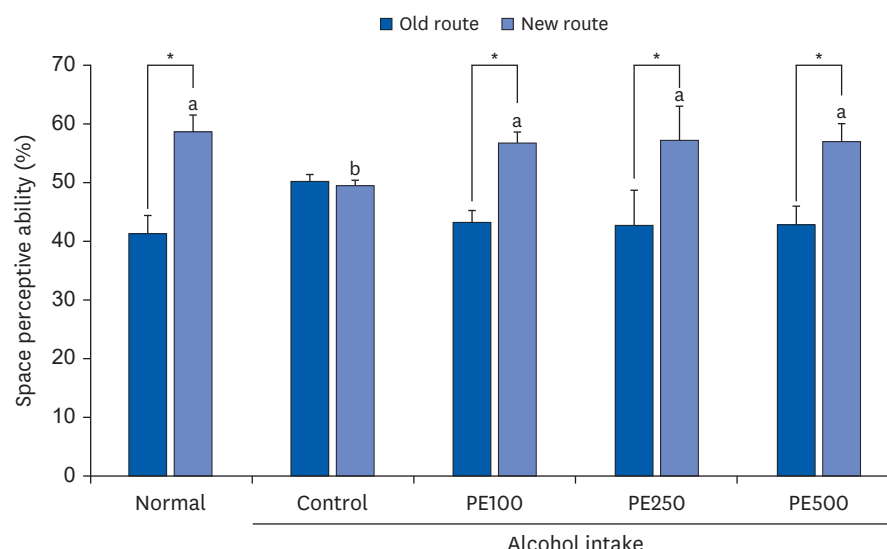
### Statistical analysis

The results are presented as mean ± SD. Statistical differences were confirmed using SPSS software (version 26.0; IBM Corporation, Armonk, NY, USA). Duncan's multiple range test by one-way analysis of variance was used to compare significant differences between the groups. Student's *t*-test was performed to compare the training and test sessions in the T-maze and novel object recognition tests. For all comparisons, significant differences used a probability value of *P* < 0.05.

## RESULTS

### Effects of PE on space perceptive ability in T-maze test

The effects of PE on the spatial cognitive ability of mice were measured using the T-maze test. In the control group that consumed alcohol, no significant change was noted in the number of entries between the new and old paths; however, in the treatment group that consumed PE at different concentrations after alcohol consumption, the exploration of new paths significantly increased. These results suggest that long-term alcohol consumption impairs spatial cognition and learning abilities in mice. By contrast, the PE treatment group significantly preferred exploring new routes (approximately 56–58%) rather than existing routes (approximately 41–42%). This indicates that PE attenuated spatial perceptual impairment in mice (**Fig. 2**).



**Fig. 2.** Effect of PE on the T-maze test in alcohol-induced mouse.

Values are mean  $\pm$  SD.

The mice were divided into 5 groups (each group comprised 9 mice): Normal = water; Control = 16% alcohol (5 g/kg/day); PE100 = 16% alcohol (5 g/kg/day) + PE (100 mg/kg/day); PE250 = 16% alcohol (5 g/kg/day) + PE (250 mg/kg/day); PE500 = 16% alcohol (5 g/kg/day) + PE (500 mg/kg/day).

PE, *Phyllostachys edulis* (Carrière) J. Houz.

\*Space perceptive abilities for old and new routes were significantly different, as determined by Student's *t*-test ( $P < 0.05$ ).

<sup>a,b</sup>Means with different letters are significantly different ( $P < 0.05$ ), according to Duncan's multiple range test.

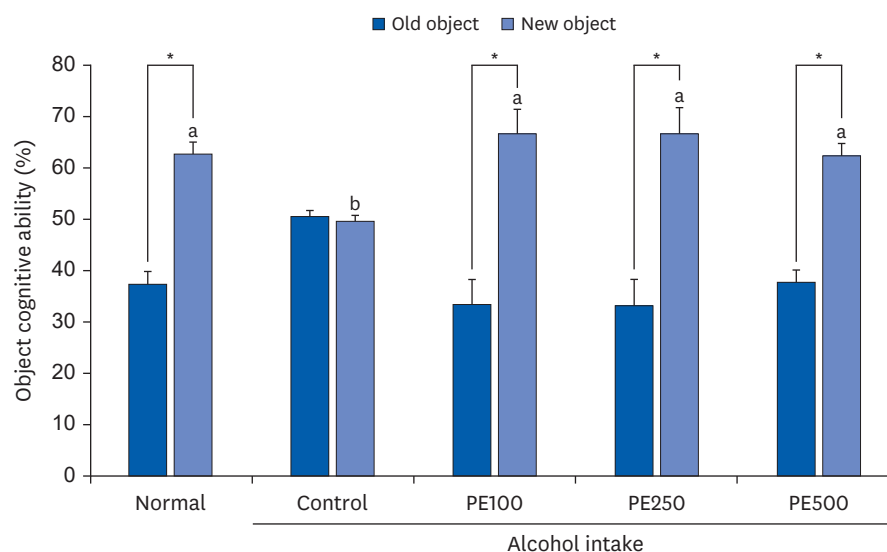
### Effects of PE on object cognitive ability in novel object recognition test

To determine whether PE consumption affected the object recognition ability of mice, we performed a novel object recognition test. The difference in exploration speed between familiar and novel objects was correlated with the mice' object recognition ability (**Fig. 3**). Mice that drank alcohol were observed to have an impaired ability to discriminate between objects, with no significant difference between the number of times they touched familiar objects (50.4%) and the number of times they touched novel objects (49.5%). However, mice that were intragastrically administered PE could discriminate between the novel objects. These results showed that PE administration improved impaired object recognition in alcohol-induced mice.

### Effects of PE on Morris water maze test

The effects on spatial memory were investigated using the Morris water maze test. Over the 3 days of training, the mice learned how to find the hidden platform. However, control mice discovered the platform more slowly than normal mice, suggesting that alcohol consumption induced memory deficits. In comparison, mice treated with PE showed a reduction in the latency to reach the hidden platform (**Fig. 4A**). Additionally, the PE-treated mice had fewer crossings and took a shorter time to discover the target platform compared to the alcohol-induced mice (**Fig. 4B**). We also conducted a memory retention test to calculate the time spent in the target quadrant area (**Fig. 4C**). It was confirmed that the occupancy rate of the target quadrant decreased for the alcohol-consuming control group (13.7%) compared to the normal group (25.0%). Conversely, when PE was administered to memory-impaired mice, the average time spent in the target quadrant increased, with the highest rate (26.6%) in the group administered at PE100 group. This suggests that PE is effective in improving learning and memory formation. Finally, the latency to the exposed platform was assessed





**Fig. 3.** Effect of PE on novel object recognition test in alcohol-induced mouse.

Values are mean  $\pm$  SD.

The mice were divided into 5 groups (each group comprised 9 mice): Normal = water; Control = 16% alcohol (5 g/kg/day); PE100 = 16% alcohol (5 g/kg/day) + PE (100 mg/kg/day); PE250 = 16% alcohol (5 g/kg/day) + PE (250 mg/kg/day); PE500 = 16% alcohol (5 g/kg/day) + PE (500 mg/kg/day).

PE, *Phyllostachys edulis* (Carrière) J. Houz.

\*Significant differences in cognitive ability between familiar and novel objects were determined using the Student's *t*-test ( $P < 0.05$ ).

<sup>a,b</sup>Means with different letters on the bars are significantly different, according to Duncan's multiple range test ( $P < 0.05$ ).

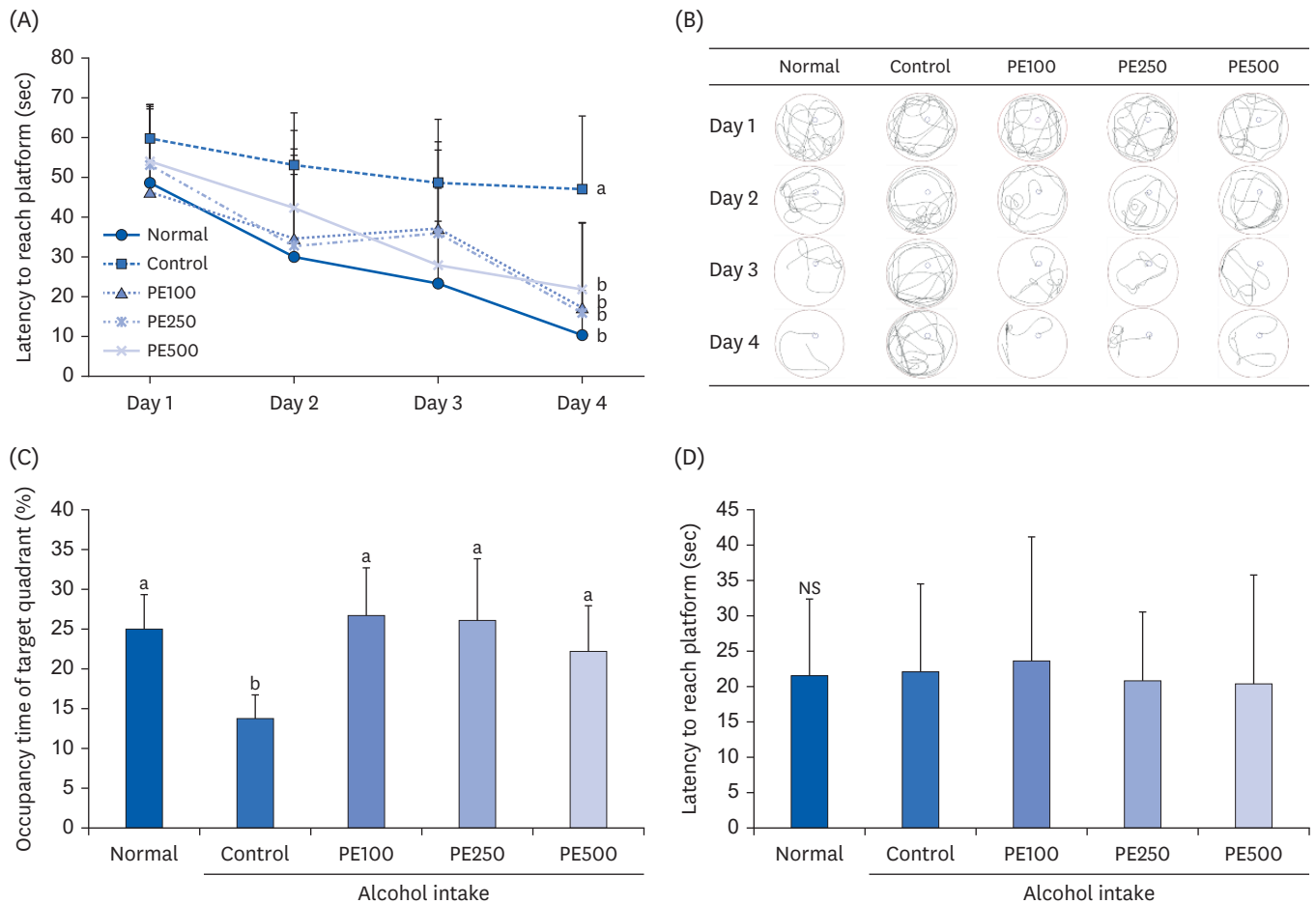
to determine whether visual and motor skills were influencing factors. None of the groups showed any differences in the latency to reach the exposed platform. This confirmed that the results of the experiment were related to learning and long-term memory but not to the mice's visual and motor abilities (**Fig. 4D**). Although there were no significant concentration-dependent differences in the effectiveness of PE, all concentrations effectively ameliorated alcohol-induced cognitive impairment.

### Effects of PE on ROS generation

To determine whether PE was effective in suppressing oxidative stress, we measured the ROS levels in the brain, liver, and kidney of mice with alcohol-induced injuries (**Fig. 5**). Alcohol-induced ROS production was significantly higher in the brain, liver, and kidney of the control group than in those of the normal group. In all groups administrated PE across brain, kidney and liver tissues, ROS production was significantly reduced to levels similar to those in the normal group. Although, there was no variance in concentration based on PE administration, the treatment of PE effectively mitigated ROS production induced by alcohol.

### Effects of PE on lipid peroxidation

As MDA indicates the degree of lipid peroxidation, MDA content in the mouse brain, kidney, and liver tissues was measured and quantified as an indicator of oxidative stress (**Fig. 6**). MDA levels in the mice's brain were significantly increased in the control group (38.2 nmol/L/mg protein) compared to the normal group (27.9 nmol/L/mg protein). However, in all PE-treated groups, MDA production decreased to a significantly lower level than that in the normal group, at 21.8, 26.6, and 25.4 nmol/L/mg protein. Likewise, PE inhibited the alcohol-induced increase in MDA levels in the liver and kidneys. These results indicate that PE administration can prevent alcohol-induced oxidative stress by improving lipid peroxidation.



**Fig. 4.** Effect of PE on Morris water maze test in alcohol-induced mouse.

(A) Escape latency to the hidden platform, (B) path tracing of each group to reach the hidden platform, (C) occupancy time of target quadrant, and (D) latency to exposed platform.

Values are mean  $\pm$  SD.

The mice were divided into 5 groups (each group comprised 9 mice): Normal = water; Control = 16% alcohol (5 g/kg/day); PE100 = 16% alcohol (5 g/kg/day) + PE (100 mg/kg/day); PE250 = 16% alcohol (5 g/kg/day) + PE (250 mg/kg/day); PE500 = 16% alcohol (5 g/kg/day) + PE (500 mg/kg/day).

PE, *Phyllostachys edulis* (Carrière) J. Houz.

<sup>a,b</sup>Means with different letters on the bars are significantly different according to Duncan's multiple range test ( $P < 0.05$ ). NS indicates that there is no significant difference ( $P < 0.05$ ) among groups by Duncan's multiple range test.

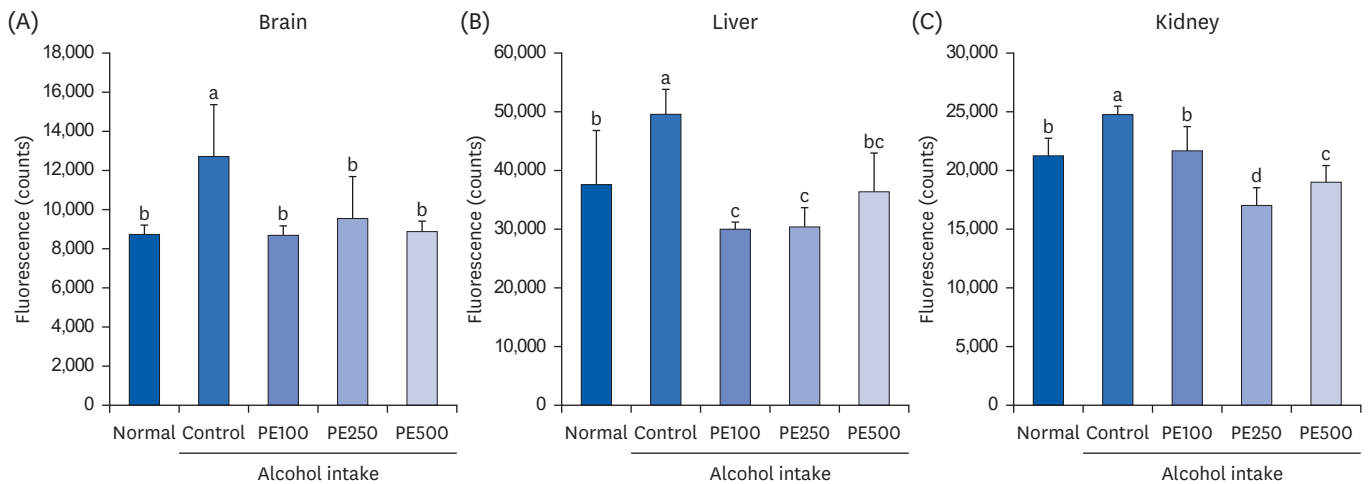
### Effects of PE on NO production

The protective effects of PE on alcohol-induced NO production in the brain, liver, and kidneys are shown in **Fig. 7**. We observed that the NO concentration in the brains of the alcohol-induced control group was higher than that in the normal group. Conversely, the PE treatment group had significantly lower NO levels compared to the control group (2.73  $\mu\text{mol/L}$ ) at 1.92, 1.98, and 2.01  $\mu\text{mol/L}$ . Additionally, the intragastric administration of PE significantly reduced liver NO levels. In the kidneys, the PE-administered group showed reduced NO production to a level similar to that of the normal group. These results revealed that alcohol consumption leads to the overproduction of NO, and that treatment with PE inhibits it.

### Effects of PE on BDNF protein expression

The effect of PE on alcohol-induced neuroprotection in mice brains was studied by measuring the expression of BDNF using western blot analysis (**Fig. 8**). In comparison to the normal group, BDNF protein levels were notably decreased in the brains of the alcohol-induced





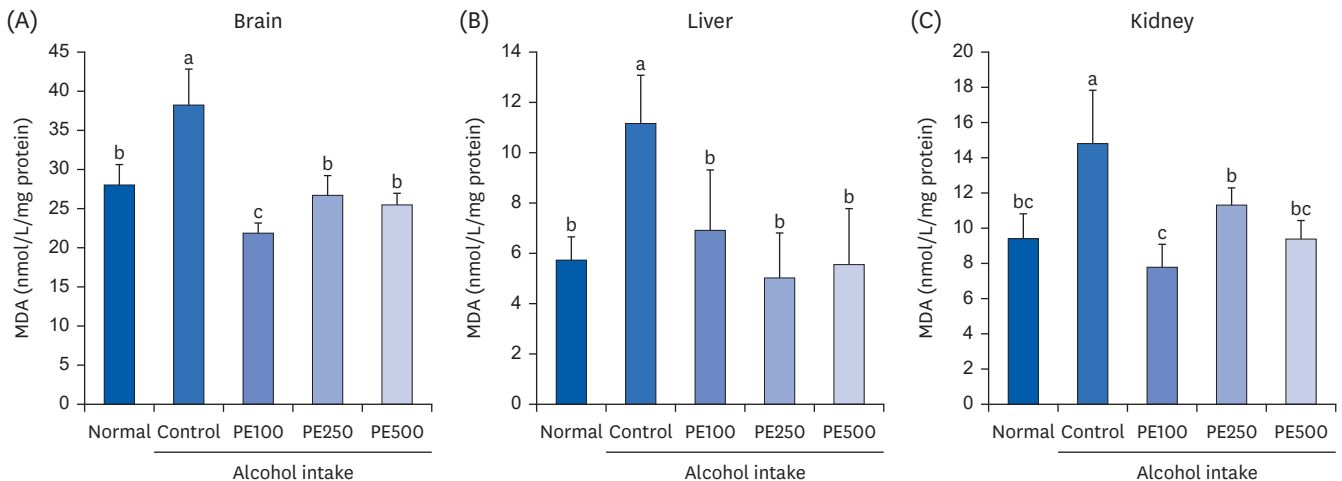
**Fig. 5.** Effect of PE on ROS in (A) brain, (B) liver, and (C) kidney in alcohol-induced mouse.

Values are mean  $\pm$  SD.

The mice were divided into 5 groups (each group comprised 9 mice): Normal = water; Control = 16% alcohol (5 g/kg/day); PE100 = 16% alcohol (5 g/kg/day) + PE (100 mg/kg/day); PE250 = 16% alcohol (5 g/kg/day) + PE (250 mg/kg/day); PE500 = 16% alcohol (5 g/kg/day) + PE (500 mg/kg/day).

PE, *Phyllostachys edulis* (Carrière) J. Houz; ROS, reactive oxygen species.

<sup>a-d</sup>Means with different letters on the bars are significantly different, according to Duncan's multiple range test ( $P < 0.05$ ).



**Fig. 6.** Effect of PE on lipid peroxidation in (A) brain, (B) liver, and (C) kidney in alcohol-induced mouse.

Values are mean  $\pm$  SD.

The mice were divided into 5 groups (each group comprised 9 mice): Normal = water; Control = 16% alcohol (5 g/kg/day); PE100 = 16% alcohol (5 g/kg/day) + PE (100 mg/kg/day); PE250 = 16% alcohol (5 g/kg/day) + PE (250 mg/kg/day); PE500 = 16% alcohol (5 g/kg/day) + PE (500 mg/kg/day).

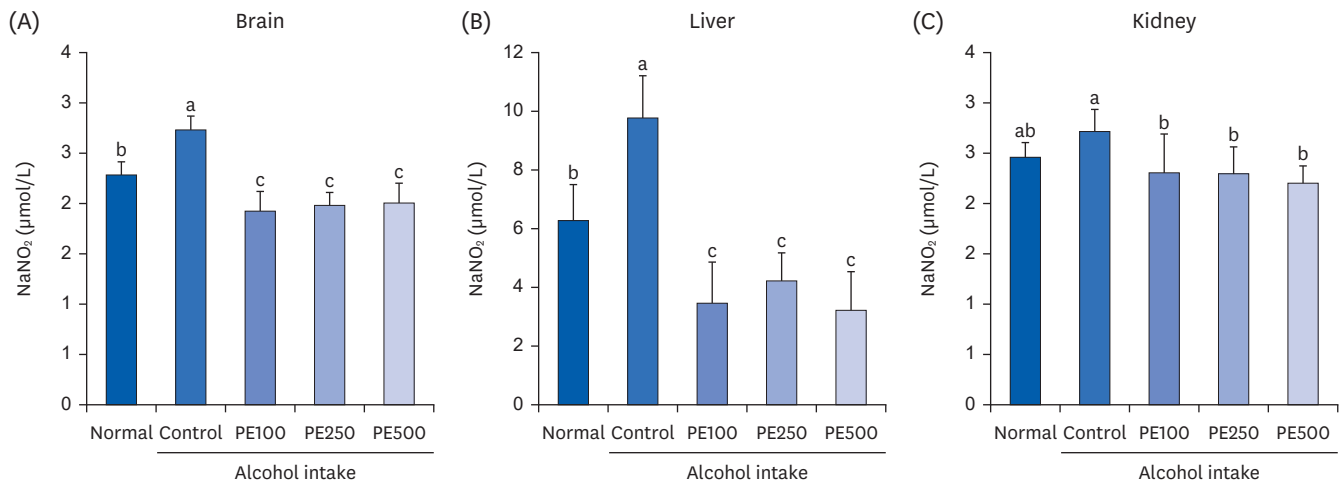
PE, *Phyllostachys edulis* (Carrière) J. Houz; MDA, malondialdehyde.

<sup>a-c</sup>Means with different letters on the bars are significantly different, according to Duncan's multiple range test ( $P < 0.05$ ).

control group, indicating a suppression of *BDNF* expression. Conversely, treatment with PE appeared to promote recovery in *BDNF* protein expression levels. Specifically, *BDNF* expression was upregulated in the PE250 group to a level akin to that observed in the normal group.

### Effects of PE on apoptosis-related protein expression

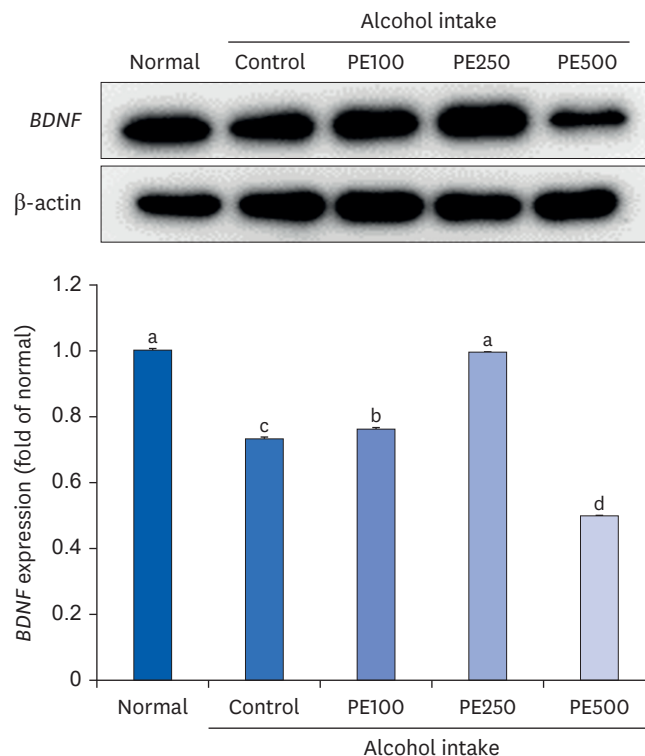
To validate the protective effect of PE against apoptosis, we assessed the protein expression of key genes, *Bcl-2* and *Bax*, in mouse brain tissue. *Bax*, a known promoter of apoptosis, exhibited a significant increase in protein expression in the alcohol-consuming control group compared to the normal group. However, *Bax* expression was notably decreased in the PE-treated group relative to the control group. Furthermore, *Bcl-2*, which impedes



**Fig. 7.** Effect of PE on NO production in (A) brain, (B) liver, and (C) kidney in alcohol-induced mouse. Values are mean  $\pm$  SD.

The mice were divided into 5 groups (each group comprised 9 mice): Normal = water; Control = 16% alcohol (5 g/kg/day); PE100 = 16% alcohol (5 g/kg/day) + PE (100 mg/kg/day); PE250 = 16% alcohol (5 g/kg/day) + PE (250 mg/kg/day); PE500 = 16% alcohol (5 g/kg/day) + PE (500 mg/kg/day). PE, *Phyllostachys edulis* (Carrière) J. Houz; NO, nitric oxide.

<sup>a-c</sup>Means with different letters on the bars are significantly different, according to Duncan's multiple range test ( $P < 0.05$ ).



**Fig. 8.** Effect of PE on BDNF protein expression in alcohol-induced mouse.

Values are mean  $\pm$  SD.

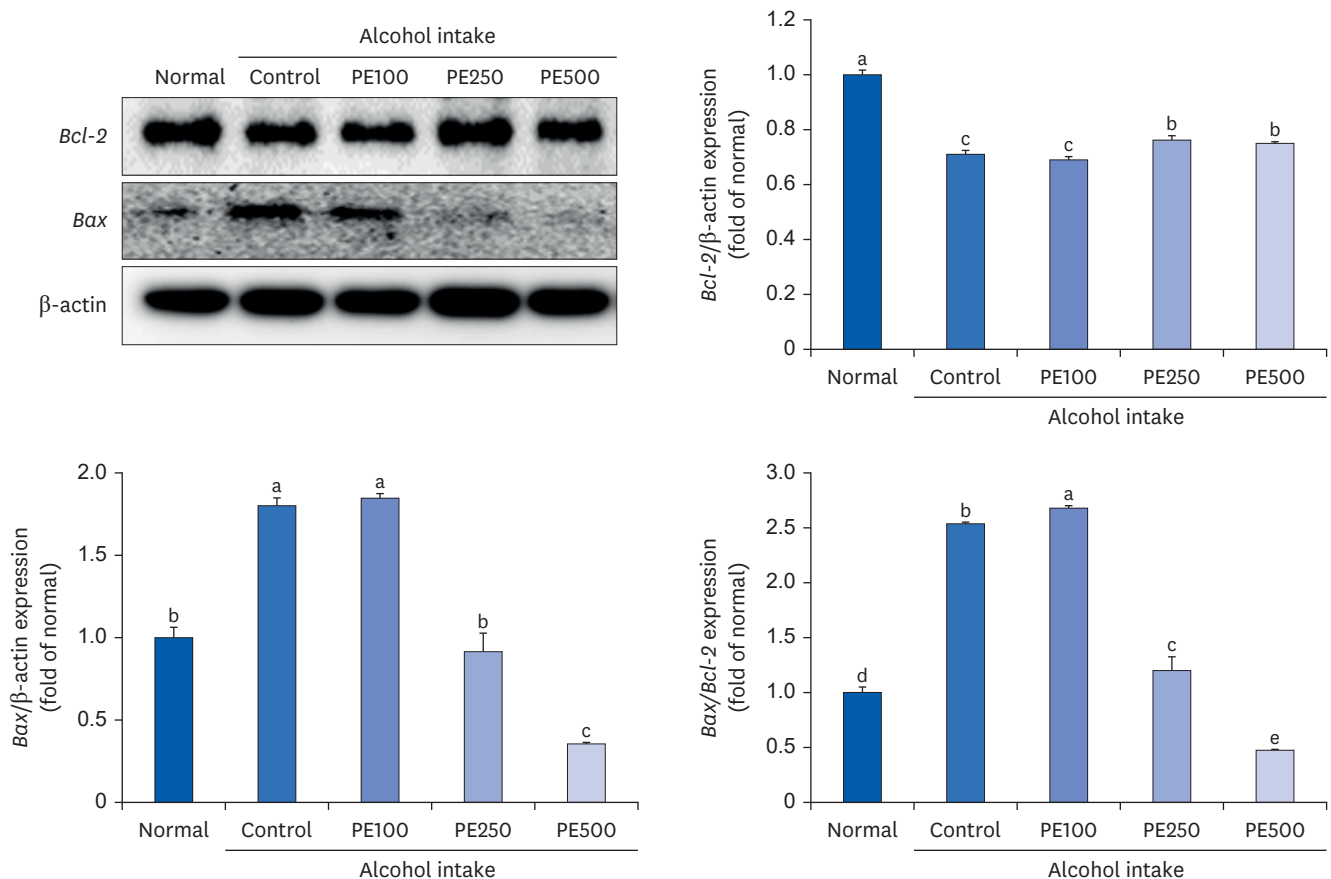
The mice were divided into 5 groups (each group comprised 9 mice): Normal = water; Control = 16% alcohol (5 g/kg/day); PE100 = 16% alcohol (5 g/kg/day) + PE (100 mg/kg/day); PE250 = 16% alcohol (5 g/kg/day) + PE (250 mg/kg/day); PE500 = 16% alcohol (5 g/kg/day) + PE (500 mg/kg/day). PE, *Phyllostachys edulis* (Carrière) J. Houz; BDNF, brain-derived neurotrophic factor.

<sup>a-d</sup>Means with different letters on the bars are significantly different, according to Duncan's multiple range test ( $P < 0.05$ ).

cell death mechanisms, displayed significantly lower protein expression in the control group compared to the normal group. Interestingly, *Bcl-2* protein expression, which was downregulated, exhibited a slight increase in the PE250 and PE500 groups compared to the normal group. Moreover, upon evaluating the ratio of *Bax* to *Bcl-2*, a significant increase was observed in the control group compared to the normal group, whereas a significant decrease in concentration was noted in the PE250 and PE500 treated groups. These findings suggest that PE confers a protective effect against alcohol-induced cell death by inhibiting *Bax* and promoting *Bcl-2* (Fig. 9).

### Effects of PE on oxidative stress-related protein expression

*SOD-1* is a major superoxide-scavenging enzyme that catalyzes the replacement of superoxide with hydrogen peroxide and molecular oxygen and is an essential antioxidant enzyme that maintains cellular redox homeostasis. It also actively catalyzes the detoxification of peroxide radicals. Additionally, under normal conditions, *CAT* is of little importance to most cell types; however, in the presence of oxidative stress, it is the most adaptable antioxidant enzyme and plays an important role in the cellular defense against oxidative damage. *GPx-1* functions to detoxify hydrogen peroxide and is one of the most important antioxidant enzymes in



**Fig. 9.** Effect of PE on apoptosis-related protein expression in alcohol-induced mouse. Values are mean  $\pm$  SD.

The mice were divided into 5 groups (each group comprised 9 mice): Normal = water; Control = 16% alcohol (5 g/kg/day); PE100 = 16% alcohol (5 g/kg/day) + PE (100 mg/kg/day); PE250 = 16% alcohol (5 g/kg/day) + PE (250 mg/kg/day); PE500 = 16% alcohol (5 g/kg/day) + PE (500 mg/kg/day).

PE, *Phyllostachys edulis* (Carrière) J. Houz; *Bcl-2*, B-cell lymphoma 2; *Bax*, Bcl-2-associated X protein.

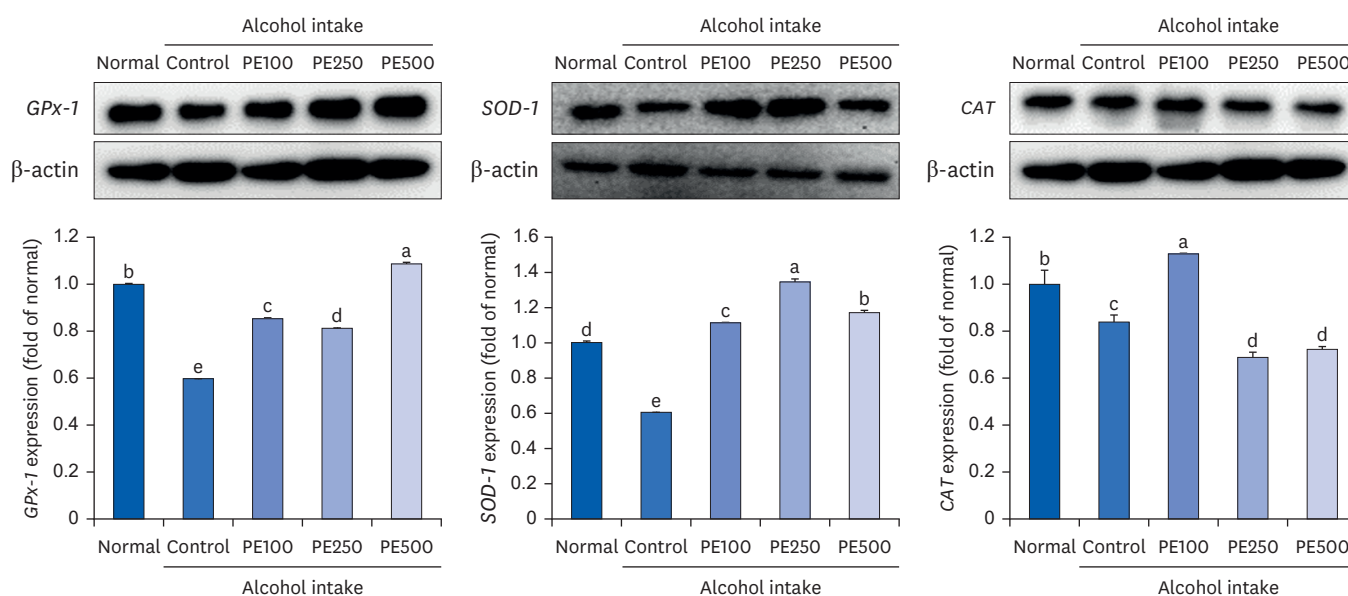
<sup>a-c</sup>Means with different letters on the bars are significantly different, according to Duncan's multiple range test ( $P < 0.05$ ).

humans. Based on this, we measured the expression of proteins related to oxidative enzymes in the liver of mice. In the alcohol-consuming control group, all three oxidative stress factors were reduced compared to the normal group. However, the PE treated group showed recovery patterns similar to the normal group. Specifically, in *CAT*, significant results were observed only in the low-concentration PE treatment group (PE100). Additionally, both *GPx-1* and *SOD-1* showed signs of recovery, although their concentrations were not statistically significant. These findings collectively confirm the protective effect of PE against alcohol-induced liver damage and oxidative stress (Fig. 10).

## DISCUSSION

Chronic alcohol consumption is a risk factor for various forms of dementia, including neuropsychiatric disorders and brain damage [20,21]. When excessive alcohol is consumed, ROS is overproduced, causing oxidative stress and DNA damage [22,23]. Oxidative stress induced by alcohol consumption downregulates *BDNF*; disrupts intracellular signaling systems involved in cell survival, growth, and differentiation; and can cause neuroinflammation in the brain, leading to a decline in neurological function [24].

Approximately 70 bamboo species are grown and cultivated in Korea. Bamboo is cold; sweet in taste; non-poisonous; and effective in treating high blood pressure, sterilization, and antifungal treatments. Therefore, it has been used as a folk remedy in oriental medicine since ancient times [25]. Most recent studies have focused on component analysis and antibacterial activity and are mainly limited to the physiological activity of leaves, resulting in a lack of research on *in vivo* physiological activity [26]. In this study, we examined the effect of improving cognitive and memory abilities in animal experimental models induced



**Fig. 10.** Effect of PE on oxidative stress-related protein expression in alcohol-induced mouse.

Values are mean  $\pm$  SD.

The mice were divided into 5 groups (each group comprised 9 mice): Normal = water; Control = 16% alcohol (5 g/kg/day); PE100 = 16% alcohol (5 g/kg/day) + PE (100 mg/kg/day); PE250 = 16% alcohol (5 g/kg/day) + PE (250 mg/kg/day); PE500 = 16% alcohol (5 g/kg/day) + PE (500 mg/kg/day).

PE, *Phyllostachys edulis* (Carrière) J. Houz; GPx-1, glutathione peroxidase 1; SOD-1, superoxide dismutase 1; CAT, catalase.

<sup>a-e</sup>Means with different letters on the bars are significantly different, according to Duncan's multiple range test ( $P < 0.05$ ).

by chronic alcohol consumption of PE. T-maze, novel object recognition and water maze test are the most commonly used memory tests. Among them, T-maze and novel object recognition tests are conducted to evaluate short-term spatial cognitive and memory ability by relying on the mouse's innate spatial detection ability [27,28]. On the other hand, Morris water maze is an experiment conducted to evaluate the animal's long-term memory ability based on its learning ability [29]. The chronic alcohol consumption control group didn't show a significant difference in entries between existing and new passages in the T-maze test compared to the normal group. However, the group treated with PE showed an increase in entries into the new passage, indicating improved learning ability. Similar results were seen in the object recognition test, where the control group showed no difference in contact frequency between old and new objects, whereas the PE group had increased contact frequency with new objects. These findings suggest that PE consumption improved learning ability impaired by alcohol consumption. In the Morris water maze experiment, the time to find the hidden escape zone was significantly shortened in the PE group compared to the control group that consumed chronic alcohol. The escape zone was removed and the mice remained in the quadrant, where the escape zone was located. On comparing time, it was confirmed that the group treated with PE remained longer. In addition, when the time to arrive at the escape zone was measured by comparing the hidden and exposed escape zones, there was no significant difference in the exposed escape zone, indicating that the escape zone found using memory and learning abilities. This confirmed that PE improved the long-term memory and learning abilities that were damaged by alcohol consumption.

The levels of NO, MDA, and ROS in the brain, kidney, and liver tissues of the control group that chronically consumed alcohol increased significantly compared to those in the normal group; however, the levels were significantly decreased in the group that was administered PE. This demonstrates the effect of improving oxidative stress induced by chronic alcohol consumption. The expression of dementia- and apoptosis-related proteins was measured in the brain tissue using western blotting. *BDNF*, a growth factor that regulates neuroplasticity and synapse growth in the adult brain [30], is associated with long-term drug addiction [31]. It has been suggested that long-term alcohol consumption can cause changes in neuroplasticity and ultimately lead to cognitive impairment [32]. The results of this experiment also confirmed that the *BDNF* concentration in the control group that consumed alcohol decreased. Additionally, it was confirmed that the reduced expression of *BDNF* was restored when bamboo shoots were treated at low and medium concentrations. However, because *BDNF* is not the only target for alcohol, further research will be needed on directly or indirectly linked biological factors [33,34].

Additionally, a decrease in the expression of *Bax*, a pro-apoptotic protein, and an increase in the expression of *Bcl-2*, an anti-apoptotic protein, were observed. By measuring oxidative stress-related factors related to alcohol metabolism in the liver using western blotting, it was confirmed that the expression of antioxidant enzyme factors increased in the group that consumed PE, indicating that PE inhibits alcohol-induced apoptosis and oxidative stress. This is thought to have had an effect on improving cognitive ability by increasing the expression of growth factors in the brain. Hence, PE consumption potentially guards against cognitive decline stemming from chronic alcohol consumption. Further understanding of how PE preserves cognitive function and the imperative for extensive large-scale studies are essential, with expectations for advancements in future research. This underscores the significance of exploring the effectiveness of natural compounds in preventing and mitigating cognitive impairment linked to alcohol consumption.

## REFERENCES

- Grant BF, Dawson DA, Stinson FS, Chou SP, Dufour MC, Pickering RP. The 12-month prevalence and trends in DSM-IV alcohol abuse and dependence: United States, 1991-1992 and 2001-2002. *Drug Alcohol Depend* 2004;74:223-34. [PUBMED](#) | [CROSSREF](#)
- Zahr NM, Kaufman KL, Harper CG. Clinical and pathological features of alcohol-related brain damage. *Nat Rev Neurol* 2011;7:284-94. [PUBMED](#) | [CROSSREF](#)
- Butterworth RF. Hepatic encephalopathy--a serious complication of alcoholic liver disease. *Alcohol Res Health* 2003;27:143-5. [PUBMED](#)
- Cheon YH, Joe KH, Kim DJ. Alcohol-related dementia. *J Korean Geriatr Psychiatry* 2012;16:89-96.
- Korea Forest Research Institute. Encyclopedia of Bamboos in Korea; New Research Report 7. Seoul: Ukgo Publishing; 2005; p. 203.
- Cho WD. Studies on the functional components extracted from bamboo. *Coop Manag Inst* 2000;23:95-108.
- Cho E, Kim S, Na I, Kim DC, In MJ, Chae HJ. Antioxidant and anticoagulant activities of water and ethanol extracts of *Phyllostachys pubescence* leaf produced in Geoje. *J Appl Biol Chem* 2010;53:170-3. [CROSSREF](#)
- Shibata M, Sato F, Takeshita K, Otani K. Pharmacological studies on bamboo grass *Sasa-albomarginata* 5. Combined effects of the extract F-D with vitamin C. *Shoyakugaku Zasshi* 1980;34:274-9.
- Heo, J. DongUiBoGam-DongUiBoGam Korean Translate Committee. Seoul: Bubinmunhwasa; 1990. p. 192-1392.
- Tundis R, Augimeri G, Vivacqua A, Romeo R, Sicari V, Bonofiglio D, Loizzo MR. Anti-inflammatory and antioxidant effects of leaves and sheath from bamboo (*Phyllostachys edulis* J. Houz). *Antioxidants* 2023;12:1239. [PUBMED](#) | [CROSSREF](#)
- Rajebhosale VA, Burt RG, Toro VA. Nutritive value of bamboo (*Dendrocalamus calostachyus*) leaves for crossbred calves. *Indian J Anim Nutr* 1998;15:58-60.
- Tsunoda S, Yamamoto K, Sakamoto S, Inoue H, Nagasawa H. Effects of Sasa Health, extract of bamboo grass leaves, on spontaneous mammary tumorigenesis in SHN mice. *Anticancer Res* 1998;18:153-8. [PUBMED](#)
- Michiko F. Difference between bamboo shoots and vegetables in thermal disintegration of tissues and polysaccharides fractionated by successive extraction. *J Food Sci* 1990;55:739-45. [CROSSREF](#)
- Montgomery KC. A test of two explanations of spontaneous alternation. *J Comp Physiol Psychol* 1952;45:287-93. [PUBMED](#) | [CROSSREF](#)
- Antunes M, Biala G. The novel object recognition memory: neurobiology, test procedure, and its modifications. *Cogn Process* 2012;13:93-110. [PUBMED](#) | [CROSSREF](#)
- Morris R. Developments of a water-maze procedure for studying spatial learning in the rat. *J Neurosci Methods* 1984;11:47-60. [PUBMED](#) | [CROSSREF](#)
- Muhammad T, Ali T, Ikram M, Khan A, Alam SI, Kim MO. Melatonin rescue oxidative stress-mediated neuroinflammation/neurodegeneration and memory impairment in scopolamine-induced amnesia mice model. *J Neuroimmune Pharmacol* 2019;14:278-94. [PUBMED](#) | [CROSSREF](#)
- Ohkawa H, Ohishi N, Yagi K. Assay for lipid peroxides in animal tissues by thiobarbituric acid reaction. *Anal Biochem* 1979;95:351-8. [PUBMED](#) | [CROSSREF](#)
- Schmidt HH, Pollock JS, Nakane M, Förstermann U, Murad F. Ca<sup>2+</sup>/calmodulin-regulated nitric oxide synthases. *Cell Calcium* 1992;13:427-34. [PUBMED](#) | [CROSSREF](#)
- Gerritzen IJ, Hertogh CM, Depla MF, Veenhuizen RB, Verschuur EM, Joling KJ. Neuropsychiatric symptoms in people with Korsakoff syndrome and other alcohol-related cognitive disorders living in specialized long-term care facilities: prevalence, severity, and associated caregiver distress. *J Am Med Dir Assoc* 2018;19:240-7. [PUBMED](#) | [CROSSREF](#)
- Huang WJ, Zhang X, Chen WW. Association between alcohol and Alzheimer's disease. *Exp Ther Med* 2016;12:1247-50. [PUBMED](#) | [CROSSREF](#)
- Signorini-Allibe N, Gonthier B, Lamarche F, Eysseric H, Barret L. Chronic consumption of ethanol leads to substantial cell damage in cultured rat astrocytes in conditions promoting acetaldehyde accumulation. *Alcohol Alcohol* 2005;40:163-71. [PUBMED](#) | [CROSSREF](#)
- Koop DR. Alcohol metabolism's damaging effects on the cell: a focus on reactive oxygen generation by the enzyme cytochrome P450 2E1. *Alcohol Res Health* 2006;29:274-80. [PUBMED](#)
- Climont E, Pascual M, Renau-Piqueras J, Guerri C. Ethanol exposure enhances cell death in the developing cerebral cortex: role of brain-derived neurotrophic factor and its signaling pathways. *J Neurosci Res* 2002;68:213-25. [PUBMED](#) | [CROSSREF](#)



25. Kweon MH, Hwang HJ, Sung HC. Identification and antioxidant activity of novel chlorogenic acid derivatives from bamboo (*Phyllostachys edulis*). J Agric Food Chem 2001;49:4646-55. [PUBMED](#) | [CROSSREF](#)
26. Kim EY, Lee MJ, Song YO, Moon GS. Effect of maengjong-juk (*Phyllostachys pubescens*) extract coated rice diet on antioxidative system of C57BL/6 mice fed atherogenic diet. Korean J Community Nutr 2004;9:536-44.
27. Mamiya T, Kise M, Morikawa K. Ferulic acid attenuated cognitive deficits and increase in carbonyl proteins induced by buthionine-sulfoximine in mice. Neurosci Lett 2008;430:115-8. [PUBMED](#) | [CROSSREF](#)
28. Vorhees CV, Williams MT. Morris water maze: procedures for assessing spatial and related forms of learning and memory. Nat Protoc 2006;1:848-58. [PUBMED](#) | [CROSSREF](#)
29. Bevins RA, Besheer J. Object recognition in rats and mice: a one-trial non-matching-to-sample learning task to study 'recognition memory'. Nat Protoc 2006;1:1306-11. [PUBMED](#) | [CROSSREF](#)
30. Alderson RF, Alterman AL, Barde YA, Lindsay RM. Brain-derived neurotrophic factor increases survival and differentiated functions of rat septal cholinergic neurons in culture. Neuron 1990;5:297-306. [PUBMED](#) | [CROSSREF](#)
31. Peregud DI, Baronets VY, Terebilina NN, Gulyaeva NV. Role of *BDNF* in neuroplasticity associated with alcohol dependence. Biochemistry (Mosc) 2023;88:404-16. [PUBMED](#) | [CROSSREF](#)
32. MacLennan AJ, Lee N, Walker DW. Chronic ethanol administration decreases brain-derived neurotrophic factor gene expression in the rat hippocampus. Neurosci Lett 1995;197:105-8. [PUBMED](#) | [CROSSREF](#)
33. Abrahao KP, Salinas AG, Lovinger DM. Alcohol and the brain: neuronal molecular targets, synapses, and circuits. Neuron 2017;96:1223-38. [PUBMED](#) | [CROSSREF](#)
34. Ceballos N, Sharma S. Risk and resilience: the role of brain-derived neurotrophic factor in alcohol use disorder. AIMS Neurosci 2016;3:398-432. [CROSSREF](#)