



## Isolation and Quantitative Analysis of BACE1 Inhibitory Compounds from *Cirsium maackii* Flower

Grishma Bhatarrail, Su Hui Seong<sup>1</sup>, Hyun Ah Jung<sup>2,\*</sup>, and Jae Sue Choi<sup>1,\*</sup>

<sup>1</sup>Department of Food and Life Sciences, Pukyong National University, Busan 48513, Republic of Korea

<sup>2</sup>Department of Food Science and Human Nutrition, Jeonbuk National University, Jeonju 54896, Republic of Korea

**Abstract** – The purpose of our study was to evaluate anti-AD potential of *Cirsium maackii* flowers. MeOH extract, CH<sub>2</sub>Cl<sub>2</sub>, EtOAc, and *n*-BuOH fraction of this flower notably inhibited BACE1 (IC<sub>50</sub> = 76.47 ± 1.66, 22.98 ± 1.45, 8.65 ± 0.63, and 72.47 ± 3.04 µg/mL, respectively). β-amyrenone (49.70 mg) (**1**), lupeol acetate (1.43 g) (**2**), lupeol (1.22 g) (**3**), lupenone (23.70 mg) (**4**), β-sitosterol (1.01 g) (**6**), and β-sitosterol glucoside (13.00 mg) (**7**) from CH<sub>2</sub>Cl<sub>2</sub>, apigenin (100.20 mg) (**8**), luteolin (19.00 mg) (**9**), apigenin 7-*O*-glucuronide methyl ester (21.30 mg) (**14**), and tracheloside (53.70 mg) (**5**) from EtOAc, apigenin 5-*O*-glucoside (11.00 mg) (**10**), luteolin 5-*O*-glucoside (11.00 mg) (**11**) and apigenin 7-*O*-glucuronide (91.00 mg) (**12**) from *n*-BuOH, and luteolin 7-*O*-glucuronide (22.00 mg) (**13**) from H<sub>2</sub>O fraction were isolated. HPLC showed high levels of **8**, **9** and **12** in MeOH extract (33.07 ± 0.07, 31.44 ± 0.17 and 16.89 ± 0.33 mg/g, respectively), EtOAc (161.01 ± 1.78, 96.93 ± 0.34 and 73.38 ± 0.06 mg/g, respectively), and *n*-BuOH fraction (32.18 ± 0.33, 44.31 ± 0.32 and 105.94 ± 0.36 mg/g, respectively). Since, **3** and **9** are well-known BACE1 inhibitors, the anti-AD activity of *C. maackii* flower might be attributable to their presence.

**Keywords** – *Cirsium maackii* flower, Alzheimer's disease, BACE1, HPLC, Isolation

### Introduction

Alzheimer's disease (AD) is a progressive neurodegenerative disease where brain regions, particularly cerebral cortex and hippocampus, are affected by deposition of amyloid-β (Aβ) plaques and neurofibrillary tangles accompanied by synaptic dysfunction and neurodegeneration.<sup>1,2</sup> Increased proteolytic processing of β-amyloid precursor protein (APP) can lead to the production and accumulation of neurotoxic forms of Aβ in the brain.<sup>3</sup> According to the amyloid cascade hypothesis, APP is generally cleaved by α-secretase and simultaneously processed by β- and γ-secretases. Disparity between production and clearance of Aβ peptide can result in aggregation of Aβ peptide into soluble oligomers and forms insoluble fibrils of beta-sheet conformation that are eventually deposited in diffused senile plaques.<sup>4</sup> Beta-secretase 1, also known as beta-site amyloid precursor

protein cleaving enzyme 1 (BACE1) is an enzyme that leads to the production of neurotoxic Aβ in the pathogenesis of AD. Due to the result disabling nature and chronicity of AD with high prevalence in older population and inability of available AD treatments to justify their costs, current AD treatments have been criticized because they fail to provide sufficient benefit.

Emerging researches have been directed toward BACE1 inhibitors due to their potential in lowering cerebral Aβ concentrations and treating as well as preventing AD.<sup>5</sup> Moreover, BACE1 initiates the production of toxic Aβ that plays a crucial role in the early phase of AD pathogenesis. Due to its apparent rate limiting function, BACE1 appears to be a prime target to prevent and lower Aβ generation in AD.<sup>6</sup>

*Cirsium maackii* (*C. maackii*) is an herbaceous perennial plant of family Compositae. It is native to Korea.<sup>7</sup> Roots or whole plant of *Cirsium* Radix et Herba have been used as a folk medicine to treat hemorrhage, diuresis, inflammation of the liver and kidney, and a variety of abdominal and intestinal disorders.<sup>8</sup> *Cirsium* species have been found to exert various bioactivities, including anti-microbial,<sup>9</sup> anti-proliferative,<sup>10</sup> anti-diabetic,<sup>11</sup> anti-oxidant,<sup>12</sup> anti-inflammatory,<sup>7</sup> vasorelaxant,<sup>13</sup> anti-cancer,<sup>14</sup> and hepatopro-

\*Author for correspondence

Hyun Ah Jung, Department of Food Science and Human Nutrition, Jeonbuk National University, Jeonju 54896, Republic of Korea.  
Tel: +82-63-270-4882; E-mail: [jungaha@jbnu.ac.kr](mailto:jungaha@jbnu.ac.kr)

Jae Sue Choi, Department of Food and Life Sciences, Pukyong National University, Busan 48513, Republic of Korea.  
Tel: +51-629-5845; E-mail: [choijs@pknu.ac.kr](mailto:choijs@pknu.ac.kr)

TECTIVE<sup>15</sup> effects. In addition, numerous phytochemicals, including flavonoids, phenolic acids,<sup>9,16</sup> lignans, neolignans, sesquieolignans,<sup>16,17</sup> phenylacrylic acid esters, polyacetylenes,<sup>18</sup> sterols, and triterpenes have been isolated from these species.<sup>19,20</sup>

Walesiuk et al. have reported that *Cirsium rivulare* flowers extract shows pro-cognitive and its leaf extract possesses anxiolytic effect in a rat model.<sup>21</sup> Kim and Kim have shown that, among methanol extracts of root, stem, leaves, and flowers of *Cirsium japonicum*, flowers and leaves have optimum peaks of luteolin, apigenin, and hispidulin when analyzed by high-performance liquid chromatography (HPLC).<sup>22</sup>

Our previous study has focused on inhibitory effects of *C. maackii* leaves on advanced glycation end products (AGEs).<sup>16</sup> Considering mounting interest in assessing the anti-AD capacity of compounds from natural source and the ease of access to *Cirsium* species, the objective of the present study was to determine whether *C. maackii* flower could alleviate AD by evaluating its BACE1 inhibition effect and clarifying its activity through quantitative analysis of compounds present in its different extracts and fractions by HPLC.

## Experimental

**Chemicals and reagents** – BACE1 kit was obtained from PanVera Corp. (Madison, WI, USA). Ultra-pure grade water was used in this study. All chemicals and solvents used in this study were purchased from Sigma-Aldrich (St. Louis, MO, USA) unless otherwise stated. All solvents used in HPLC were of HPLC grade.

**Plant materials** – Flowers of *C. maackii* were collected from the southeast area of Gyeongsangnam-do Province, Korea, in 2016 and authenticated by Professor Jae Sue Choi (Pukyong national university, Korea). A voucher specimen (No.20160901) was deposited at the laboratory of Professor J.S. Choi.

**Extraction, fractionation, and isolation** – Dried flowers of *C. maackii* (2.8 kg) were extracted four times with MeOH at 70 °C. The final yield of MeOH extract was 168.28 g. The obtained extract was then suspended in water (H<sub>2</sub>O) and successively partitioned with dichloromethane (CH<sub>2</sub>Cl<sub>2</sub>), ethyl acetate (EtOAc), and *n*-butanol (*n*-BuOH) to yield CH<sub>2</sub>Cl<sub>2</sub> (34.78 g), EtOAc (13.33 g), and *n*-BuOH (16.63 g) fractions, as well as H<sub>2</sub>O residue (102.00 g). The CH<sub>2</sub>Cl<sub>2</sub> fraction was chromatographed over silica gel column and eluted with *n*-hexane:EtOAc 25:1 to EtOAc to obtain five subfractions. Repeated chromatography of subfraction 1 yielded β-amyrenone

(49.70 mg) (1), lupeol acetate (1.43 g) (2), and lupenone (23.70 mg) (4) while subfraction 2 yielded lupeol (1.22 g) (3). β-sitosterol (1.01 g) (6) and β-sitosterol glucoside (13.00 g) (7) were obtained from subfractions 3 and 5, respectively. The EtOAc fraction was subjected to silica gel column chromatography and eluted with CH<sub>2</sub>Cl<sub>2</sub>:MeOH:H<sub>2</sub>O (7:1:0.1 to 3:1:0.1) to give seven different subfractions. Apigenin (100.20 mg) (8) was obtained as a precipitate from subfraction 2. Repetitive chromatography of subfractions 3, 4, and 5 over silica gel column with CH<sub>2</sub>Cl<sub>2</sub>:MeOH:H<sub>2</sub>O (10:2:0.1, 7:1:0.1, and 5:1:0.1) yielded luteolin (19.00 mg) (9), tracheloside (53.70 mg) (5), and apigenin 7-*O*-glucuronide methyl ester (21.30 mg) (14), respectively.

The *n*-BuOH fraction was proceeded to chromatography on Sephadex LH-20 column using 100% MeOH as a mobile phase solvent to yield eight different subfractions. Continual elution of subfraction 4 using EtOAc:MeOH:H<sub>2</sub>O (24:4:3) and RP-C<sub>18</sub> column gave apigenin 7-*O*-glucuronide (91.00 mg) (12) whereas subfraction 7 chromatographed over silica gel column using EtOAc:MeOH:H<sub>2</sub>O (30:2:1) gave an insoluble precipitate on addition of MeOH. This precipitate was separated through filtration and later identified as luteolin 5-*O*-glucoside (11.00 mg) (11). Repetitive column chromatography of the supernatant over silica gel, RP-C<sub>18</sub>, and Sephadex LH-20 yielded apigenin 5-*O*-glucoside (11.00 mg) (10). Quarter amount of the H<sub>2</sub>O fraction (40 g) was subjected to Diaion HP-20 column and eluted with 100% H<sub>2</sub>O and 100% MeOH. Continuous silica gel, Sephadex LH-20, and MCI CHP-20P chromatography of 100% MeOH subfraction (7 g) with EtOAc:MeOH:H<sub>2</sub>O (24:4:3), 50% MeOH, and 30% MeOH gave luteolin 7-*O*-glucuronide (22.00 mg) (13).

**β-Amyrenone (1)** – EI-MS for C<sub>30</sub>H<sub>48</sub>O *m/z* (rel. int.): 409 [M-CH<sub>3</sub>] (4.59%), 218.25 (100%), 203.15 (34%), 189.20 (24.21%), 147.15 (11.88%).

**Lupeol acetate (2)** – EI-MS for C<sub>32</sub>H<sub>52</sub>O<sub>2</sub> *m/z* (rel. int.): 468 [M<sup>+</sup>] (20.99%), 408.35 [M-CH<sub>3</sub>COO]<sup>+</sup> (8.36%), 189.15 (100%).

**Tracheloside (5)** – <sup>1</sup>H-NMR (CD<sub>3</sub>OD, 600 MHz) δ<sub>H</sub> 7.06 (1H, d, *J* = 8.3 Hz, H-5'), 6.85 (1H, d, *J* = 7.6 Hz, H-5), 6.70 (1H, d, *J* = 2.1 Hz, H-2), 6.68 (3H, d, H-6), 6.67 (2H, d, *J* = 2.1 Hz, H-2'/6'), 3.98 (2H, d, *J* = 8.9 Hz, H-9), 3.14 (1H, d, *J* = 13.7 Hz, H-7'), 2.88 (1H, d, *J* = 13.7 Hz, H-7'), 2.79 (1H, dd, *J* = 13.7, 5.52 Hz, H-7), 2.51 (1H, dd, *J* = 13.8, 9.63 Hz, H-7), 2.43 (1H, m). <sup>13</sup>C-NMR (CD<sub>3</sub>OD, 150 MHz) δ<sub>C</sub> 180.37 (C-9'), 150.61 (C-4'), 150.58 (C-4), 149.18 (C-3), 147.17 (C-3'), 133.34 (C-1), 131.71 (C-1'), 124.13 (C-6'), 122.23 (C-6), 117.82 (C-5'), 115.94 (C-2'),

113.96 (C-2), 113.25 (C-5), 102.85 (C-1''), 77.27 (C-8'), 77.84 (C-3''), 74.89 (C-2''), 71.78 (C-9), 71.30 (C-4''), 44.60 (C-8), 41.83 (C-7'), 32.18 (C-7).

**Apigenin 7-O-glucuronide methyl ester (14)** –  $^1\text{H}$ -NMR (DMSO- $d_6$ , 600 MHz)  $\delta_{\text{H}}$  7.95 (2H, d,  $J$  = 8.9 Hz, H-2'/6'), 6.94 (2H, d,  $J$  = 8.8 Hz, H-3'/5'), 6.86 (1H, s, H-3), 6.85 (1H, d,  $J$  = 2.0 Hz, H-8), 6.47 (1H, d,  $J$  = 2.7 Hz, H-6), 5.32 (2H, d,  $J$  = 7.6 Hz, H-1''), 4.21 (1H, d,  $J$  = 9.6 Hz, H-5'), 3.67 (3H, s, OCH<sub>3</sub>).  $^{13}\text{C}$ -NMR (DMSO- $d_6$ , 150 MHz)  $\delta_{\text{C}}$  181.95 (C-4), 169.16 (C-6'), 164.30 (C-2), 162.39 (C-7), 161.46 (C-4'), 161.16 (C-5), 156.93 (C-9), 128.59 (C-2'/6'), 120.90 (C-1'), 116.00 (C-3'/5'), 105.96 (C-10), 103.08 (C-3), 99.28 (C-6), 94.60 (C-8), 75.38 (C-5'), 75.13 (C-2'), 72.69 (C-3'), 71.28 (C-4'), 51.95 (OCH<sub>3</sub>).

**Apigenin 5-O-glucoside (10)** –  $^1\text{H}$  NMR (DMSO- $d_6$ , 600 MHz)  $\delta_{\text{H}}$  7.88 (1H, d,  $J$  = 9.0, 2.2 Hz, H-2'/6'), 6.91 (1H, d,  $J$  = 8.9 Hz, H-5'), 6.79 (1H, d,  $J$  = 2.0 Hz, H-8), 6.65 (1H, s, H-3), 6.73 (1H, d,  $J$  = 2.5 Hz, H-6), 4.70 (1H, d,  $J$  = 7.7 Hz, H-1''),  $^{13}\text{C}$  NMR (DMSO- $d_6$ , 150 MHz)  $\delta_{\text{C}}$  176.99 (C-4), 162.69 (C-2), 161.18 (C-7), 158.64 (C-9), 158.32 (C-5), 160.76 (C-4'), 115.87 (C-3'/5'), 128.08 (C-2'/6'), 121.16 (C-1'), 108.17 (C-10), 104.56 (C-3), 104.40 (C-6), 98.30 (C-8), 75.57 (C-3''), 77.57 (C-5''), 73.62 (C-2''), 69.66 (C-4''), 60.82 (C-6'').

**Apigenin 7-O-glucuronide (12)** –  $^1\text{H}$  NMR (DMSO- $d_6$ , 400 MHz)  $\delta_{\text{H}}$  7.85 (2H, d,  $J$  = 8.9 Hz, H-2'/6'), 6.88 (2H, d,  $J$  = 8.9 Hz, H-3'/5'), 6.77 (1H, d,  $J$  = 4.2 Hz, H-8), 6.40 (1H, s, H-3), 6.40 (1H, d,  $J$  = 2.0 Hz, H-6), 5.05 (1H, d,  $J$  = 6.6 Hz, H-1'').  $^{13}\text{C}$  NMR (DMSO- $d_6$ , 100 MHz)  $\delta_{\text{C}}$  181.92 (C-4), 172.45 (C-6''), 164.41 (C-2), 163.03 (C-7), 156.94 (C-9), 162.51 (C-5), 161.0 (C-4'), 116.16 (C-3'/5'), 128.44 (C-2'/6'), 120.16 (C-1'), 105.26 (C-10), 102.64 (C-3), 99.61 (C-6), 94.65 (C-8), 73.75 (C-3''), 76.48 (C-5''), 72.95 (C-2''), 71.98 (C-4'').

**Luteolin 7-O-glucuronide (13)** –  $^1\text{H}$  NMR (DMSO- $d_6$ , 600 MHz)  $\delta_{\text{H}}$  7.42 (1H, s, H-2'), 7.38 (1H, d,  $J$  = 8.7 Hz, H-6'), 6.86 (1H, d,  $J$  = 7.9 Hz, H-5'), 6.76 (1H, d,  $J$  = 1.4 Hz, H-8), 6.69 (1H, s, H-3), 6.40 (1H, d,  $J$  = 2.1 Hz, H-6), 5.09 (1H, d,  $J$  = 7.6 Hz, H-1'').  $^{13}\text{C}$  NMR (DMSO- $d_6$ , 150 MHz)  $\delta_{\text{C}}$  181.80 (C-4), 172.70 (C-6''), 162.95 (C-2), 164.46 (C-7), 160.98 (C-5), 156.89 (C-9), 150.34 (C-4'), 145.96 (C-3'), 118.96 (C-1'), 120.90 (C-6'), 116.04 (C-5'), 113.11 (C-2'), 105.23 (C-10), 102.83 (C-3), 99.54 (C-1''), 99.54 (C-6), 94.51 (C-8), 76.39 (C-3''), 77.48 (C-5''), 72.90 (C-2''), 73.80 (C-4'').

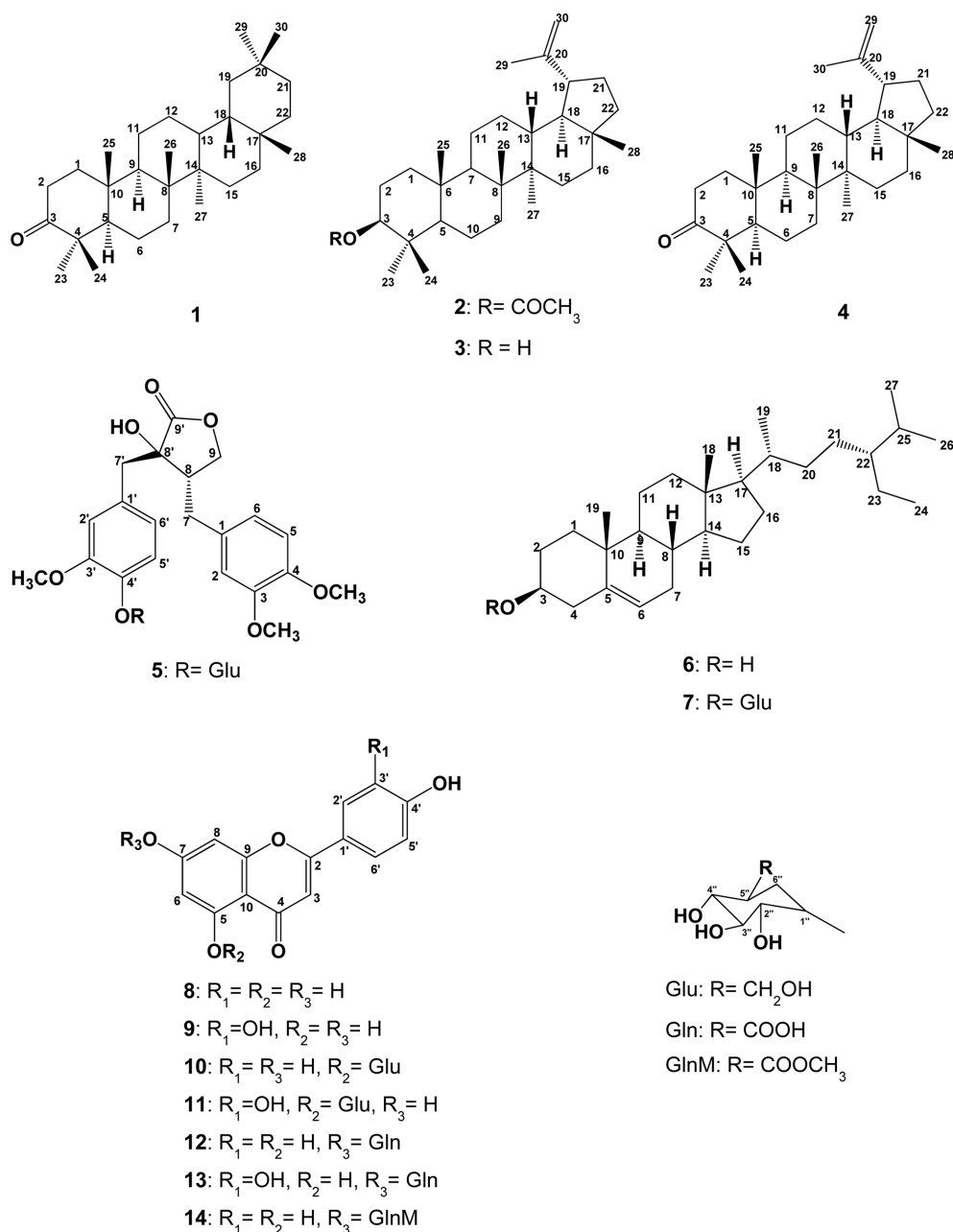
**HPLC quantitative analysis** – HPLC was performed on a Reverse phase JASCO HPLC system (Tokyo, Japan) equipped with a PU-1580 Intelligent HPLC pump, an LG-1580-04 quaternary gradient unit, a UV-1575 intelligent UV/Vis detector, a PG-1580-54 4-line degasser, and a

CO-1560 intelligent column thermostat. Using a BORWIN chromatographic system (Le Fontanil, France), HPLC data were analyzed. Chromatography was accomplished on a Phenomenex C<sub>18</sub> reverse phase column (Phenomenex, 4.6 × 250 mm, 5  $\mu\text{m}$ ) at 30 °C and monitored at 350 nm. An isocratic solvent system consisting of 0.2% phosphoric acid and MeOH at ratio of 55:45 was used for 80 min at the flow rate of 0.5 ml/min. For preparation of stock solutions, extracts and seven flavonoids were dissolved in 100% MeOH at concentrations of 2 mg/mL and diluted to 1, 0.5, and 0.25  $\mu\text{g/mL}$ , respectively. After filtration through a centrifugal filter device (0.45  $\mu\text{m}$ , Millipore Co., Bedford, MA, USA), 10  $\mu\text{L}$  of each sample was injected. Calibration curves of all seven compounds were drawn with three standards at concentrations ranging from 62.5 to 500  $\mu\text{g/mL}$ . Regression equations were calculated in the form of  $y = ax + b$ , where  $y$  and  $x$  corresponded to peak area and concentration, respectively. Relative quantities of seven flavonoids in the MeOH extract, EtOAc fraction, and *n*-BuOH fraction (mg/g of the extract) were calculated from each equation.

**Assay for BACE1 inhibition** – BACE1 inhibitory assay was carried out according to the supplied manual with selected modifications. Briefly, mixtures of 10  $\mu\text{L}$  of assay buffer (50 mM sodium acetate, pH 4.5), 10  $\mu\text{L}$  of BACE1 (1.0 U/mL), and 10  $\mu\text{L}$  of the substrate (750 nM Rh-EVNLDAEFK-Quencher in 50 mM, ammonium bicarbonate), and 10  $\mu\text{L}$  of samples (final concentration, 250  $\mu\text{g/mL}$  for the extracts/fractions) were incubated at 25 °C for 60 min in the dark. The proteolysis of two fluorophores (Rh-EVNLDAEFK-Quencher) by BACE1 was observed by exciting the mixtures at 545 nm and collecting the emitted light at 585 nm. Fluorescence was recorded with a microplate spectrofluorometer (Molecular Devices, Sunnyvale, CA, USA). The BACE1 inhibitory activity was expressed in terms of the IC<sub>50</sub> value ( $\mu\text{g/mL}$ ). Quercetin was used as a positive control.

## Result and Discussion

Initially, the anti-AD potential of MeOH extract of *C. maackii* showed dose-dependent inhibition of BACE1 (16.50, 43.45, and 59.48% inhibition at 20, 50, and 100  $\mu\text{g/mL}$ , respectively). Since its MeOH extract showed modest inhibition, it was further portioned into different fractions. BACE1 inhibitory potentials of different fractions were then determined. Results are summarized in Table 1 and Fig. 2. CH<sub>2</sub>Cl<sub>2</sub> (86.58% at 50  $\mu\text{g/mL}$ ), EtOAc (65.45% at 25  $\mu\text{g/mL}$ ), and *n*-BuOH (59.63% at 100  $\mu\text{g/mL}$ ) fractions showed dose-dependent inhibition against BACE1,



**Fig. 1.** Structures of the isolated compounds from *Cirsium maackii*.

with IC<sub>50</sub> values of 22.98 ± 1.45, 8.65 ± 0.63, and 72.47 ± 3.04 µg/mL, respectively, while IC<sub>50</sub> value of quercetin, the standard, was 4.51 ± 3.63 µg/mL. Its H<sub>2</sub>O fraction did not show BACE1 inhibition at tested concentration (4–100 µg/mL), indicating the absence of BACE1 inhibitory potential. The inhibition order was EtOAc > CH<sub>2</sub>Cl<sub>2</sub> > *n*-BuOH, demonstrating that EtOAc and CH<sub>2</sub>Cl<sub>2</sub> fractions were remarkable BACE1 inhibitors.

Isolated compounds including β-amyrenone (**1**),<sup>23</sup> lupeol acetate (**2**),<sup>24</sup> lupeol (**3**), lupenone (**4**), β-sitosterol

(**6**), β-sitosterol glucoside (**7**), apigenin (**8**), luteolin (**9**), tracheloside (**5**),<sup>25</sup> apigenin 7-*O*-glucuronide methyl ester (**14**),<sup>26</sup> apigenin 5-*O*-glucoside (**10**),<sup>27</sup> luteolin 5-*O*-glucoside (**11**), apigenin 7-glucuronide (**12**),<sup>28</sup> and luteolin 7-*O*-glucuronide (**13**)<sup>28</sup> were identified via <sup>1</sup>H and <sup>13</sup>C NMR analysis as well as thin layer chromatographic analysis with standard. Data were compared with reported data. Structures of compounds are shown in Fig. 1.

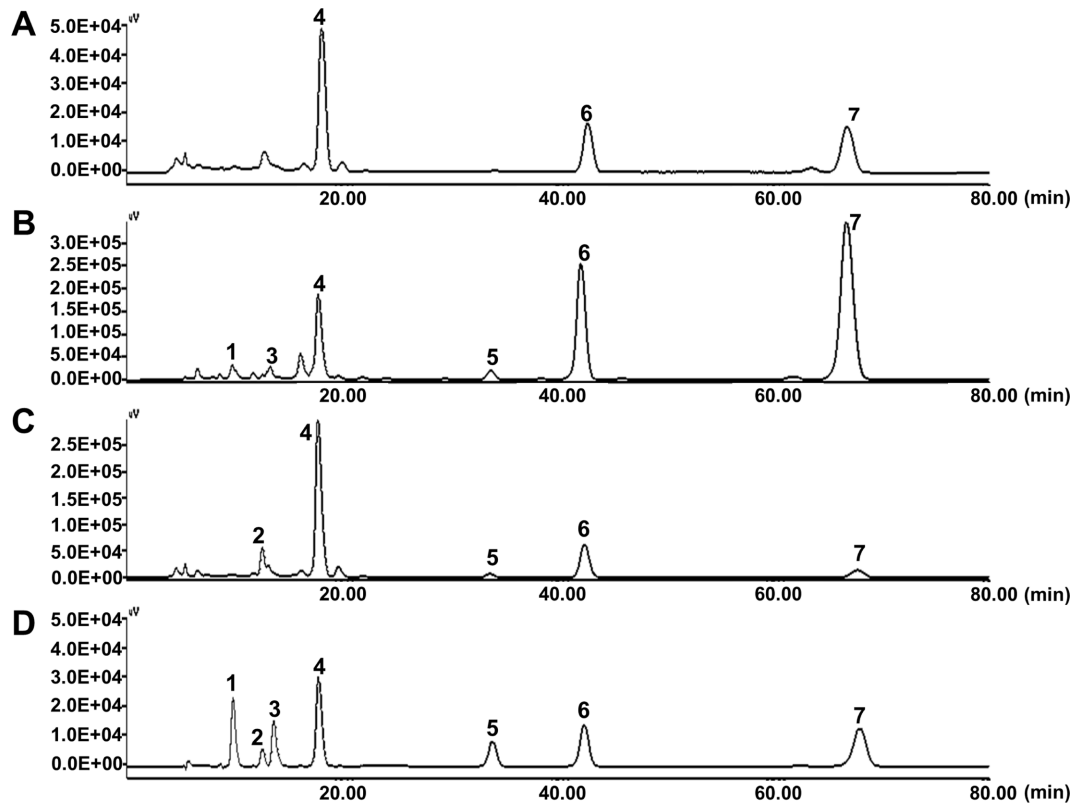
In order to determine the part-specific preponderance of all the isolated flavonoids, HPLC quantitative analysis

**Table 1.** BACE1 inhibitory activities of different fractions of *Cirsium maackii* flowers

| Fractions                       | IC <sub>50</sub> value (μg/mL) <sup>a</sup> | Concentration (μg/mL) | Inhibition % |
|---------------------------------|---|-----------------------|--------------|
| CH <sub>2</sub> Cl <sub>2</sub> | 22.98 ± 1.45                                | 5                     | 24.40 ± 6.49 |
|                                 |   | 10                    | 33.54 ± 1.92 |
|                                 |   | 50                    | 86.58 ± 1.47 |
| EtOAc                           | 8.65 ± 0.63                                 | 2                     | 26.98 ± 2.85 |
|                                 |   | 10                    | 54.62 ± 2.05 |
|                                 |   | 25                    | 65.45 ± 0.74 |
| <i>n</i> -BuOH                  | 72.47 ± 3.04                                | 4                     | 20.68 ± 2.32 |
|                                 |   | 20                    | 34.56 ± 0.29 |
|                                 |   | 100                   | 59.63 ± 1.39 |
| H <sub>2</sub> O                | >100  | 4                     | 21.34 ± 1.78 |
|                                 |   | 20                    | 25.49 ± 2.50 |
|                                 |   | 100                   | 31.38 ± 5.16 |
| Quercetin <sup>b</sup>          | 4.51 ± 3.63                                 | 0.6                   | 33.06 ± 1.67 |
|                                 |   | 3                     | 49.06 ± 0.91 |
|                                 |   | 6                     | 55.82 ± 2.52 |

<sup>a</sup>The 50% inhibition concentrations (IC<sub>50</sub>, μg/mL) are expressed as mean ± SD of triplicates.

<sup>b</sup>Positive control.



**Fig. 2.** HPLC chromatograms of MeOH extract and different fractions of *Cirsium maackii* flower. (A) MeOH extract, (B) EtOAc fraction, (C) *n*-BuOH fraction along with (D) standard compounds: peak 1 (RT: 9.84 min, compound 11), peak 2 (RT: 12.57 min, compound 13), peak 3 (RT: 13.60 min, compound 10), peak 4 (RT: 17.74 min, compound 12), peak 5 (RT: 33.87 min, compound 14), peak 6 (RT: 42.38 min, compound 9), peak 7 (RT: 67.93 min, compound 8).

of MeOH extract, EtOAc fraction, and *n*-BuOH of *C. maackii* flowers was performed. Chromatograms, calibra-

tion curve, and quantification data are shown in Fig. 2 and Tables 2 and 3, respectively. The MeOH extract had the

**Table 2.** HPLC calibration curve data of compounds **8** - **14**.

| Compounds | Retention time (min) | Linear Regression Equation     | R <sup>2</sup> |
|-----------|----------------------|--------------------------------|----------------|
| <b>8</b>  | 67.93                | $y = 9953690.54x - 5317178.63$ | 0.999          |
| <b>9</b>  | 42.38                | $y = 9784471.21x - 5398920.96$ | 0.999          |
| <b>10</b> | 13.60                | $y = 1404260.46x + 687709.38$  | 0.998          |
| <b>11</b> | 9.84                 | $y = 2227168.42x + 504059.63$  | 0.996          |
| <b>12</b> | 17.74                | $y = 4546174.33x + 405951.05$  | 0.998          |
| <b>13</b> | 12.57                | $y = 632193.91x + 549692.85$   | 0.995          |
| <b>14</b> | 33.87                | $y = 2304160.45x - 303419.83$  | 0.998          |

**Table 3.** Relative amounts of isolated compounds in extracts and fractions of *Cirsium maackii* flowers

| Extract/<br>Fraction    | Amount of compounds in the extract/fraction (mg/g) <sup>a</sup> |                   |                    |                    |                    |                    |                    |
|-------------------------|---|-------------------|--------------------|--------------------|--------------------|--------------------|--------------------|
|                         | Compound <b>8</b>   | Compound <b>9</b> | Compound <b>10</b> | Compound <b>11</b> | Compound <b>12</b> | Compound <b>13</b> | Compound <b>14</b> |
| MeOH extract            | 33.07 ± 0.07  | 31.44 ± 0.17      | ND                 | ND                 | 16.89 ± 0.33       | ND                 | 6.66 ± 0.01        |
| EtOAc fraction          | 161.01 ± 1.78   | 96.93 ± 0.34      | 8.26 ± 0.07        | 16.80 ± 1.01       | 73.38 ± 0.06       | ND                 | 27.03 ± 1.94       |
| <i>n</i> -BuOH fraction | 32.18 ± 0.33  | 44.31 ± 0.32      | 23.39 ± 0.84       | ND                 | 105.94 ± 0.36      | 60.62 ± 0.83       | 13.42 ± 0.10       |

<sup>a</sup>Amounts of compounds in 2 mg/mL extract or fraction (mg/g) are expressed as mean ± SD of triplicates.

ND Not detected.

highest amount of apigenin (**8**) and luteolin (**9**) followed by apigenin 7-*O*-glucuronide (**12**). The calibration curve of for all seven compounds luteolin 5-*O*-glucoside (**11**), apigenin 5-*O*-glucoside (**10**), apigenin 7-*O*-glucuronide (**12**), apigenin 7-*O*-glucuronide methyl ester (**14**), luteolin (**9**), and apigenin (**8**) were drawn at 0.5, 0.25 and 0.125 mg/mL as shown in Table 2. Using linear regression equation obtained from the calibration curve, the number of individual compounds in 2 mg/mL extract and fractions were calculated. The relative amount of apigenin 7-*O*-glucuronide (**12**), apigenin 7-*O*-glucuronide methyl ester (**14**), luteolin (**9**), and apigenin (**8**) in the MeOH extracts from *C. maackii* flowers were 16.89 ± 0.33 mg/g, 6.66 ± 0.01 mg/g, 31.44 ± 0.17 mg/g, and 33.07 ± 0.07 mg/g, respectively. The yield of the EtOAc fraction for luteolin 5-*O*-glucoside (**11**), apigenin 5-*O*-glucoside (**10**), apigenin 7-*O*-glucuronide (**12**), apigenin 7-*O*-glucuronide methyl ester (**14**), luteolin (**9**), and apigenin (**8**) were 16.80 ± 1.01 mg/g, 8.26 ± 0.07 mg/g, 73.38 ± 0.06 mg/g, 27.03 ± 1.94 mg/g, 96.93 ± 0.34 mg/g, and 161.01 ± 1.78 mg/g indicating that apigenin (**8**) is abundant in EtOAc fraction. The contents of luteolin 7-*O*-glucuronide (**13**), apigenin 5-*O*-glucoside (**10**), apigenin 7-*O*-glucuronide (**12**), apigenin 7-*O*-glucuronide methyl ester (**14**), luteolin (**9**), and apigenin (**8**) in the *n*-BuOH fraction of flowers were 60.62 ± 0.83, 22.39 ± 0.84, 105.94 ± 0.36, 13.42 ± 0.10, 44.31 ± 0.32, and 32.18 ± 0.33 mg/g respectively, showing that the presence of apigenin 7-*O*-glucuronide (**12**) is abundant in *n*-BuOH fraction.

AD is one of detrimental neurodegenerative diseases in this aging society. It demands instant attention. Since

some plant flowers have been reported to possess effect against inhibition of BACE1,<sup>29</sup> this study was undertaken to evaluate the anti-AD potential of *C. maackii* flower together with quantification of its major compounds. Our results demonstrated the potential of *C. maackii* flower MeOH extract and its CH<sub>2</sub>Cl<sub>2</sub> and EtOAc fractions in alleviating AD by inhibiting BACE1. In urge to identify the key compounds in our extract and fraction, we conducted HPLC and column chromatography analysis which revealed the presence of significant amounts of BACE1 inhibiting compounds luteolin (**9**) and apigenin (**8**) in CH<sub>2</sub>Cl<sub>2</sub> and EtOAc fraction, respectively.

Our results showed that the EtOAc fraction had the highest BACE1 inhibiting activity. HPLC analysis revealed that two flavonoids, apigenin (**8**) and luteolin (**9**), had the highest amounts in the EtOAc fraction. These two compounds in the EtOAc fraction might have the highest contribution to the anti-AD property. As evidenced in our previous work,<sup>30</sup> luteolin (**9**) has incredible BACE1 inhibiting effect, with IC<sub>50</sub> of 1.95 ± 0.02 μM, which is higher even than the positive control, quercetin (3.17 ± 0.12 μM). Similarly, in the cerebral cortex of a mouse model, luteolin has been reported to exert neurovascular protection against Aβ<sub>25-35</sub>-induced amnesia, improve spatial learning and memory capabilities, modulate microvascular function, increase regional cerebral blood flow values, combat reactive oxygen species, improve cholinergic neuronal system, and increase brain-derived neurotrophic factor level and its receptor tyrosine kinase B expression.<sup>31</sup> Wang et al. have also highlighted the potential effect of luteolin (**9**) on learning defects and

hippocampal structure in AD.<sup>32</sup> Moreover, apigenin (**8**) possesses scavenging effects against superoxide anion. It can improve anti-oxidative enzyme activity of superoxide dismutase and glutathione peroxidase and restore the neurotrophic ERK/CREB/BDNF pathway in the cerebral cortex, suggesting its ability to ameliorate AD-associated learning and memory impairment by relieving A $\beta$  burden.<sup>33</sup> Since contents of luteolin (**9**) and apigenin (**8**) in EtOAc fraction were the highest, apigenin (**8**) might be able to synergize the BACE1 inhibitory activity of luteolin in the EtOAc fraction of *C. maackii* flower.

CH<sub>2</sub>Cl<sub>2</sub> fraction also showed a notable degree of inhibition against BACE1. Column chromatography of *C. maackii* flower revealed that this fraction was rich in lupeol (**3**) and lupeol acetate (**2**). Our previous report has revealed that lupeol (**3**) could effectively inhibit BACE1 enzyme, with IC<sub>50</sub> of 5.12  $\pm$  0.30  $\mu$ M.<sup>34</sup> In addition, it has been reported that lupeol (**3**) can restore A $\beta$ <sub>1-42</sub> induced behavioral and biochemical abnormalities in rat brain.<sup>35</sup> Thus, the activity of CH<sub>2</sub>Cl<sub>2</sub> fraction of *C. maackii* flower against BACE1 might be correlated with the inhibitory activity of lupeol (**3**).

Emerging evidences suggest a close association between oxidative stress and neurotoxicity of amyloid fibrils.<sup>36</sup> Jung et al. have shown convincing activity of *C. maackii* flower against oxidative mediators including 2,2-diphenyl-1-picrylhydrazyl (DPPH), peroxynitrite (ONOO<sup>-</sup>), reactive oxygen species (ROS), and rat lens aldose reductase (RLAR) inhibition, thereby suggesting its anti-oxidative potential.<sup>8</sup> Furthermore, its EtOAc fraction was highly active in all tested parameters while CH<sub>2</sub>Cl<sub>2</sub> fraction was active against ONOO<sup>-</sup> only.<sup>8</sup> Since luteolin (**9**) has been reported to possess potent RLAR and DPPH inhibiting activity,<sup>37</sup> the anti-BACE1 activity of EtOAc fraction of *C. maackii* flower might be associated with the anti-oxidative potential of luteolin (**9**) which had the highest content in the EtOAc fraction.

Conversely, *n*-BuOH fraction of *C. maackii* flower had the modest activity compared to the two other nonpolar fractions. HPLC analysis showed that two glucuronides (apigenin 7-*O*- $\beta$ -D-glucuronide (**12**) and luteolin 7-*O*- $\beta$ -D-glucuronide (**13**)) had high contents. Iakovleva et al. have reported that luteolin, but not luteolin 7-*O*- $\beta$ -D-glucoside (**13**), can attenuate cytotoxic response of cultured neuronal cells to transthyretin, a plasma protein with amyloidogenic property, and rescue the phenotype of a *Drosophila melanogaster* model.<sup>38</sup> The presence of glucuronidated forms of apigenin (**8**) and luteolin (**9**) in a large amount in the *n*-BuOH fraction might have contributed to the lower activity of this fraction.

To the best of our knowledge, this is the first study to isolate secondary metabolites from *C. maackii* flowers through column chromatography. This is the first report on the isolation of  $\beta$ -amyrenone (**1**), lupeol acetate (**2**), lupeol (**3**), lupenone (**4**),  $\beta$ -sitosterol (**6**), and  $\beta$ -sitosterol glucoside (**7**) as non-polar constituents of *C. maackii* flower. Previously, Jung et al. have performed HPLC analysis of *C. maackii* flower and showed the presence of apigenin (**8**), luteolin (**9**), apigenin 7-*O*-glucuronide (**12**), and luteolin 5-*O*-glucoside (**11**) in its MeOH extract.<sup>8</sup> In the present study, we were able to isolate these compounds together with apigenin 7-*O*-glucuronide methyl ester (**14**), tracheloside (**5**), apigenin 5-*O*-glucoside (**10**), and luteolin 7-*O*-glucuronide (**13**) from *C. maackii* flowers. Although the presence of a rare flavonoid, apigenin 5-*O*-glucoside (**10**), has been long described by Iwashina et al. in Japanese *Cirsium* species by principal component and UV spectra analysis, this is the first chromatographic separation and quantification of this compound from *C. maackii*.<sup>39</sup> Additionally, using HPLC, we were able to quantify amounts of compounds in the MeOH extract as well as in EtOAc and *n*-BuOH fractions.

Flowering part of a plant is the most underexploited part compared to other plant parts such as leaves, root, and stem. During cultivation of *C. maackii* plant, the flowering part might be used as a source of important bioactive molecules or to be developed as a nutraceutical. Flowers of *C. maackii* are available plentifully during the flowering season at low cost or free of cost, suggesting that the thistle flower not only has aesthetic property, but also therapeutic potential to ameliorate AD.

In conclusion, the presence of major reference compounds, lupeol (**3**) and luteolin (**9**), from *C. maackii* flowers have potential in the treatment of AD as the fraction containing them exhibited anti-BACE1 activity. Our current findings suggest that flowers of *C. maackii* might have therapeutic potential for treating patients with AD. Since these results were based on *in vitro* tests, further experiments are needed to verify considering the mechanism of compounds isolated from *C. maackii* flowers.

## Acknowledgments

This research was supported by Research Grant of Pukyong National University (Granted in 2019).

## References

- (1) Reitz, C. *Int. J. Alzheimers Dis.* **2012**, 2012, 369808.

- (2) Singh, S. K.; Srivastav, S.; Yadav, A. K.; Srikrishna, S.; Perry, G. *Oxid. Med. Cell. Longev.* **2016**, *2016*, 7361613.
- (3) Fedele, E.; Rivera, D.; Marengo, B.; Pronzato, M. A.; Ricciarelli, R. *Mech. Ageing Dev.* **2015**, *152*, 1-4.
- (4) Kumar, A.; Singh, A.; Ekavali. *Pharmacol. Rep.* **2015**, *67*, 195-203.
- (5) Das, B.; Yan, R. *CNS Drugs* **2019**, *33*, 251-263.
- (6) Yan, R.; Vassar, R. *Lancet Neurol.* **2014**, *13*, 319-329.
- (7) Shin, M. S.; Park, J. Y.; Lee, J.; Yoo, H. H.; Hahm, D. H.; Lee, S. C.; Lee, S.; Hwang, G. S.; Jung, K.; Kang, K. S. *Bioorg. Med. Chem. Lett.* **2017**, *27*, 3076-3080.
- (8) Jung, H. A.; Kim, Y. S.; Choi, J. S. *Food Chem. Toxicol.* **2009**, *47*, 2790-2797.
- (9) Nazaruk, J.; Jakoniuk, P. *J. Ethnopharmacol.* **2005**, *102*, 208-212.
- (10) Sahli, R.; Rivière, C.; Dufloer, C.; Beaufay, C.; Neut, C.; Bero, J.; Hennebelle, T.; Roumy, V.; Ksouri, R.; Quetin-Leclercq, J.; Sahpaz, S. *Evid. Based Complement. Alternat. Med.* **2017**, *2017*, 7247016.
- (11) Yin, J.; Heo, S. I.; Wang, M. H. *Nutr. Res. Pract.* **2008**, *2*, 247-251.
- (12) Nazaruk, J.; Wajs-Bonikowska, A.; Bonikowski, R. *Chem. Nat. Compd.* **2012**, *48*, 8-10.
- (13) Kim, E. Y.; Jho, H. K.; Kim, D. I.; Rhyu, M. R. *J. Ethnopharmacol.* **2008**, *116*, 223-227.
- (14) Liu, S.; Zhang, J.; Li, D.; Liu, W.; Luo, X.; Zhang, R.; Li, L.; Zhao, J. *Nat. Prod. Res.* **2007**, *21*, 915-922.
- (15) Ma, Q.; Guo, Y.; Luo, B.; Liu, W.; Wei, R.; Yang, C.; Ding, C.; Xu, X.; He, M. *Nat. Prod. Res.* **2016**, *30*, 1824-1829.
- (16) Jung, H. A.; Park, J. J.; Min, B. S.; Jung, H. J.; Islam, M. N.; Choi, J. S. *Asian Pac. J. Trop. Med.* **2015**, *8*, 1-5.
- (17) Könye, R.; Tóth, G.; Sólyomváry, A.; Mervai, Z.; Zürn, M.; Baghy, K.; Kovalszky, I.; Horváth, P.; Molnár-Peri, I.; Noszál, B.; Béni, S.; Boldizsár, I. *Fitoterapia* **2018**, *127*, 413-419.
- (18) Lai, W. C.; Wu, Y. C.; Dankó, B.; Cheng, Y. B.; Hsieh, T. J.; Hsieh, C. T.; Tsai, Y. C.; El-Shazly, M.; Martins, A.; Hohmann, J.; Hunyadi, A.; Chang, F. R. *J. Nat. Prod.* **2014**, *77*, 1624-1631.
- (19) Chung, M. J.; Lee, S.; Park, Y. I.; Lee, J.; Kwon, K. H. *Life Sci.* **2016**, *148*, 173-182.
- (20) Luan, N.; Wei, W. D.; Wang, A.; Wu, X. L.; Qi, Y.; Li, J. J.; Zheng, J. Q.; Shang, X. Y. *J. Asian Nat. Prod. Res.* **2016**, *18*, 1015-1023.
- (21) Walesiuk, A.; Nazaruk, J.; Braszko, J. J. *J. Ethnopharmacol.* **2010**, *129*, 261-266.
- (22) Kim, S. J.; Kim, G. H. *J. Food Sci. Nutr.* **2003**, *8*, 330-335.
- (23) Quintao, N. L.; Rocha, L. W.; Silva, G. F.; Reichert, S.; Claudino, V. D.; Lucinda-Silva, R. M.; Malheiros, A.; De Souza, M. M.; Filho, V. C.; Bresolin, T. M.; Machado, M.; Wagner, T. M.; Silva, C. M. *BioMed. Res. Int.* **2014**, *2014*, 636839.
- (24) Fernández-Martínez, E.; Jiménez-Santana, M.; Centeno-Álvarez, M.; Torres-Valencia, J. M.; Shibayama, M.; Cariño-Cortés, R. *Pharmacogn. Mag.* **2017**, *13*, S860-S867.
- (25) Johansen, K. T.; Wubshet, S. G.; Nyberg, N. T.; Jaroszewski, J. W. *J. Nat. Prod.* **2011**, *74*, 2454-2461.
- (26) Mostafa, N. M.; Eldahshan, O. A.; El-Beshbishy, H. A.; Singab, A. N. *Med. Aromat. Plant (Los Angeles)* **2017**, *6*, 1000297.
- (27) Veit, M.; Geiger, H.; Czygan, F. C.; Markham, K. R. *Phytochemistry* **1990**, *29*, 2555-2560.
- (28) Ozgen, U.; Sevindik, H.; Kazaz, C.; Yigit, D.; Kandemir, A.; Secen, H.; Calis, I. *Molecules* **2010**, *15*, 2593-2599.
- (29) Liu, Q.; Fang, J.; Wang, P.; Du, Z.; Li, Y.; Wang, S.; Ding, K. *Int. J. Biol. Macromol.* **2018**, *107*, 112-120.
- (30) Choi, J. S.; Islam, M. N.; Ali, M. Y.; Kim, Y. M.; Park, H. J.; Sohn, H. S.; Jung, H. A. *Arch. Pharm. Res.* **2014**, *37*, 1354-1363.
- (31) Liu, R.; Gao, M.; Qiang, G. F.; Zhang, T. T.; Lan, X.; Ying, J.; Du, G. H. *Neuroscience* **2009**, *162*, 1232-1243.
- (32) Wang, H.; Wang, H.; Cheng, H.; Che, Z. *Mol. Med. Rep.* **2016**, *13*, 4215-4220.
- (33) Zhao, L.; Wang, J. L.; Liu, R.; Li, X. X.; Li, J. F.; Zhang, L. *Molecules* **2013**, *18*, 9949-9965.
- (34) Koirala, P.; Seong, S. H.; Jung, H. A.; Choi, J. S. *Asian Pac. J. Trop. Med.* **2017**, *10*, 1117-1122.
- (35) Kaundal, M.; Akhtar, M.; Deshmukh, R. *J. Neurol. Neurosci.* **2017**, *8*, 195.
- (36) Chakraborty, S.; Basu, S. *Int. J. Biol. Macromol.* **2017**, *103*, 733-743.
- (37) Hwang, S. H.; Wang, Z.; Guillen Quispe, Y. N.; Lim, S. S.; Yu, J. M. *J. Diabetes Res.* **2018**, *2018*, 3276162.
- (38) Iakovleva, I.; Begum, A.; Pokrzywa, M.; Walfridsson, M.; Sauer-Eriksson, A. E.; Olofsson, A. *PLoS One* **2015**, *10*, e0128222.
- (39) Iwashina T.; Ito, T.; Ootani, S. *Ann. Tsukuba Bot. Gard.* **1989**, *8*, 15-19.

Received July 3, 2019

Revised October 15, 2019

Accepted October 16, 2019