



Mechanical Thrombectomy for Large Vessel Occlusion via the Transbrachial Approach: Case Series

Yuichiro Tsuji, MD¹, Takanori Miki, MD², Hiroto Kakita, PhD, MD², Kimitoshi Sato, PhD, MD², Takashi Yoshida, PhD, MD², Fuminori Shimizu, MD²

¹Department of Neurosurgery, Osaka Medical College, Takatsuki, Osaka, Japan

²Department of Neurosurgery, Shimizu Hospital, Kyoto, Kyoto, Japan

Mechanical thrombectomy has become a standard treatment for acute ischemic stroke with large vessel occlusion. In aged patients, it is difficult to guide the catheter via the transfemoral approach due to vessel tortuosity and aortic elongation. We report our preliminary clinical experience using the transbrachial approach. Among the 119 patients who underwent thrombectomy from April 2018 to December 2019, a total of 5 patients were treated via the transbrachial approach. Clinical outcomes were retrospectively analyzed. Successful reperfusion was achieved in 4 out of 5 cases. There was 1 death due to symptomatic intracranial hemorrhage. One patient had a good outcome at discharge. There were no access-site complications associated with any of these cases. Transbrachial access for mechanical thrombectomy is feasible and can provide an alternative to the transfemoral approach.

Key Words: Transbrachial approach; Mechanical thrombectomy; Acute ischemic stroke

INTRODUCTION

The effectiveness of mechanical thrombectomy (MT) in acute ischemic stroke for large vessel occlusion has been demonstrated,¹ and the transfemoral approach is usually used.

The number of aged patients is on the increase, and in these patients, it is difficult to guide the catheter via the transfemoral approach due to vessel tortuosity and aortic elongation.^{2,3}

Prolonged puncture to reperfusion time is associated with an unfavorable outcome, and we must consider alternative approaches. The transbrachial and transradial approaches have been described in case studies after failure of

the transfemoral approach.^{2,3}

Here, we report our experience with MT via the transbrachial approach.

CASE REPORT

We report a retrospective analysis of patients who underwent thrombectomy for large vessel occlusion between April 2018 and December 2019.

The diagnosis and treatment indication for thrombectomy were determined using magnetic resonance imaging (MRI) images at Shimizu Hospital. The aortic arch was not included in MRI, and the access route was not evaluated in principle.

Correspondence to:

Yuichiro Tsuji, MD

Department of Neurosurgery, Osaka Medical College, 2-7, Daigakumachi, Takatsuki, Osaka 569-8686, Japan

Tel: +81-090-1025-2041

Fax: +81-072-682-3822

E-mail: abyssinian1225@gmail.com

Received: April 6, 2020

Revised: May 17, 2020

Accepted: May 28, 2020

Copyright © 2020 Korean Society of Interventional Neuroradiology

This is an Open Access article distributed under the terms of the Creative Commons Attribution Non-Commercial License (<http://creativecommons.org/licenses/by-nc/4.0>) which permits unrestricted non-commercial use, distribution, and reproduction in any medium, provided the original work is properly cited.

pISSN 2093-9043
eISSN 2233-6273

We analyzed patient characteristics, endovascular procedure details, and angiographic and clinical outcomes. We defined the time from femoral puncture to brachial puncture as 'FTBP' time, and from brachial puncture to recanalization as 'BPTR' time. Reperfusion results reported thrombolysis as cerebral infarction (TICI) grade.⁴ Clinical outcomes were evaluated using the National Institutes of Health Stroke Scale (NIHSS) on admission, modified Rankin scale (mRS) at discharge, and symptomatic hemorrhage diagnosis, which was defined according to the European Cooperative Acute Stroke Study-2 (ECASS-2) criteria.⁵ The morphology of the aortic arch was evaluated using Criado's classification.⁶

All procedures were performed by neurointerventionists who were certified by the Japanese Society of Neuroendovascular Therapy. The data were compared between the 2 groups using the chi-square test. We used JMP10.0 software for statistical analysis (SAS Institute Inc., Cary, NC, USA). A P-value of 0.05 was regarded as significant.

Data were prospectively derived from a database. The study was approved by the Shimizu Hospital Institutional Review Board (approval number: 2020002).

Technical aspects

In our department, a 9-Fr sheath standardly was placed in the right femoral artery, followed by navigation towards the aortic arch with a 9-Fr balloon guiding catheter (BGC) (usually 9-Fr Optimo; Tokai Medical Products, Aichi, Japan) and a 6-Fr JB2 type coaxial catheter (Medikit, Tokyo, Japan). A 0.035-inch guidewire was inserted into the common and internal carotid artery (ICA), but the catheter did not advance due to vessel tortuosity. Therefore, a 6-Fr Simmons-type coaxial catheter (SY3; Gadellius Medical, Tokyo, Japan) was used with a 0.035-inch half-stiff guidewire. However, we could not navigate the catheter into the target vessel, so we switched to

the transbrachial approach.

After inserting a 4-Fr sheath into the right brachial artery, we exchanged the 6-Fr guiding sheath with a 0.035-inch guidewire. A 0.035-inch guidewire was inserted into the ICA, an SY3 was advanced into the ICA, and a 6-Fr guiding sheath was inserted into the ICA by the coaxial method; then, MT was performed with a stent retriever or an aspiration catheter. A Marksman (Medtronic, Minneapolis, MN, USA) was used for the microcatheter, and a 0.014-inch CHIKAI guidewire (Asahi Intecc Co., Aichi, Japan) was used for the microwire. Aspiration catheters, such as Penumbra ACE 68 (Penumbra Inc., Alameda, CA, USA) and Catalyst 6 (Stryker, Fremont, CA, USA), were connected to the aspiration pump, and Sofia Flow Plus (MicroVention Terumo, Tustin, CA, USA) was used for aspiration by manual suction with a syringe. Stent retrievers, such as Embotrap II (Johnson & Johnson, Raynham, MA, USA) or Trevo XP Provue (Stryker, Kalamazoo, MI, USA), were used. After the procedure, brachial artery puncture site hemostasis was achieved by manual compression.

Results

During the study period, MT was performed in 119 patients. In 5 cases, the right brachial artery approach was used. Their clinical characteristics are summarized in Table 1. The reasons why the transbrachial approach was selected are as follows: Type III aortic arch⁶ in 3 patients, bovine arch and tortuous left common carotid artery (CCA) in 1 patient, and impossible femoral access in 1 patient. Representative cases with the transbrachial approach are shown in Figs. 1 and 2.

In 114 patients in whom the transfemoral approach was selected, 13 had Type III aortic arch or Bovine arch. Their average age was significantly older than patients without Type III aortic arch or Bovine arch (83.7 years vs. 77.1 years, respectively, $P < 0.05$).

Table 1. Clinical characteristics of patients who underwent mechanical thrombectomy via a transbrachial approach

Case no.	Age (y)	Sex	NIHSS on admission	DWI-ASPECTS	Occluded vessel	rt-PA	Indication for carotid access
1	71	F	26	5	Lt. M1	No	Type III aortic arch
2	77	F	22	6	Lt. M1	Yes	Type III aortic arch
3	85	F	19	7	Lt. M2	No	Type III aortic arch
4	87	F	12	9	Lt. M1	No	Bovine arch and tortuous left CCA
5	78	M	8	10	Lt. ICA	No	Impossible femoral access

NIHSS, National Institutes of Health Stroke Scale; DWI-ASPECTS, Diffusion-Weighted Imaging-Alberta Stroke Program Early Computed Tomography Scores; rt-PA, recombinant tissue plasminogen activator; F, female; M, male; Lt., left; M1, middle cerebral artery M1 portion; M2, middle cerebral artery M2 portion; CCA, common carotid artery; ICA, internal carotid artery.

The median age in 5 cases was 78 years (interquartile range [IQR], 77–85), and 80% (4/5) were women. Patients were admitted to the hospital with a median NIHSS score of 19 (IQR, 12–22), and the median Diffusion-Weighted Imaging-Alberta Stroke Program Early Computed Tomography Scores (DWI-ASPECTS) were 7 (IQR, 6–9). Recombinant tissue plasminogen activator (rt-PA) was administered to 1 patient.

Procedural and clinical outcomes are summarized in Table 2. Median FPBP time was 55 minutes (IQR, 30–60). The median BPTR time was 55 (IQR, 37–55) minutes, which was longer than the puncture to reperfusion time of 13 patients with TypeIII aortic arch or Bovine arch via the transfemoral approach (55 minutes vs. 70 minutes, $P=0.19$). The median onset to reperfusion time was 336 (IQR, 258–430) minutes. Successful reperfusion (TICI 2b or 3) was achieved in 4 out of 5 cases (80%).

A 6-Fr Shuttle sheath (Cook Medical, Bloomington, IN, USA)

was used in 4 cases, and a 6-Fr FUBUKI Dilator kit (Asahi Intecc Co.) was used in 1 case. In 1 patient, carotid artery stenting (CAS) and thrombectomy were performed with tandem lesions. There was 1 death due to symptomatic intracranial hemorrhage. One patient had a good outcome of (mRS=1) at discharge. No complications associated with brachial artery access were observed in any of the 5 patients.

DISCUSSION

In MT, shortening the time from onset to recanalization contributes to improved clinical outcomes,⁷ so it is important to access occluded vessels as soon as possible.

The most commonly used approach in MT is the transfemoral approach. However, in 1.2% to 5.1% of cases, a guiding catheter (GC) is impossible to advance into the target vessel

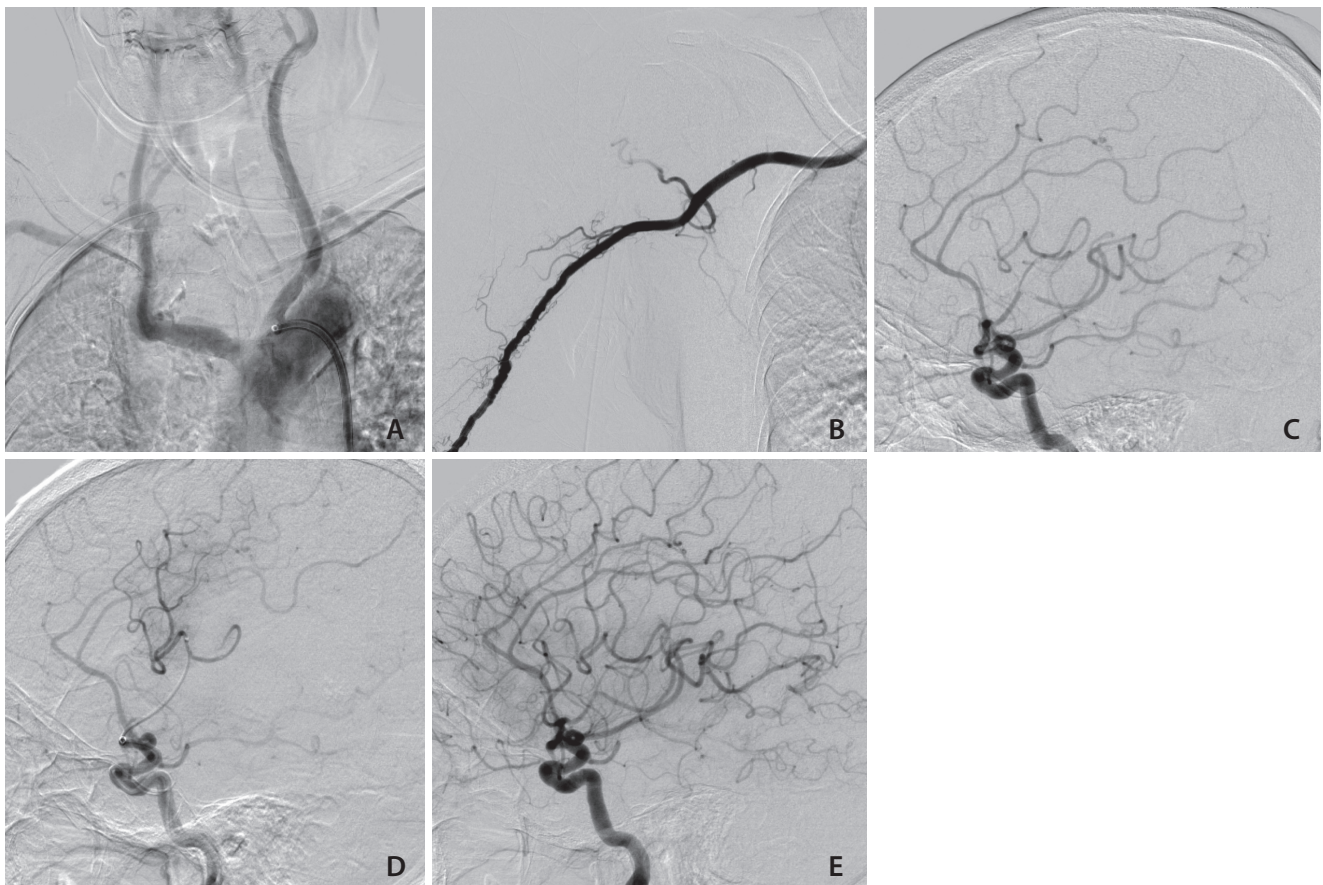


Fig. 1. Case 3. (A) This patient had a TypeIII aortic arch. (B) Right brachial artery angiogram obtained through a 4-Fr sheath. (C) The left carotid angiogram shows occlusion of the M2 portion of the left middle cerebral artery. (D) The tip of the microcatheter was advanced beyond the occluded lesion. (E) Thrombolysis as cerebral infarction (TICI) 3 reperfusion was achieved with combined Catalyst 6 (Stryker, Fremont, CA, USA) and Embotrap II (Johnson & Johnson, Raynham, MA, USA).

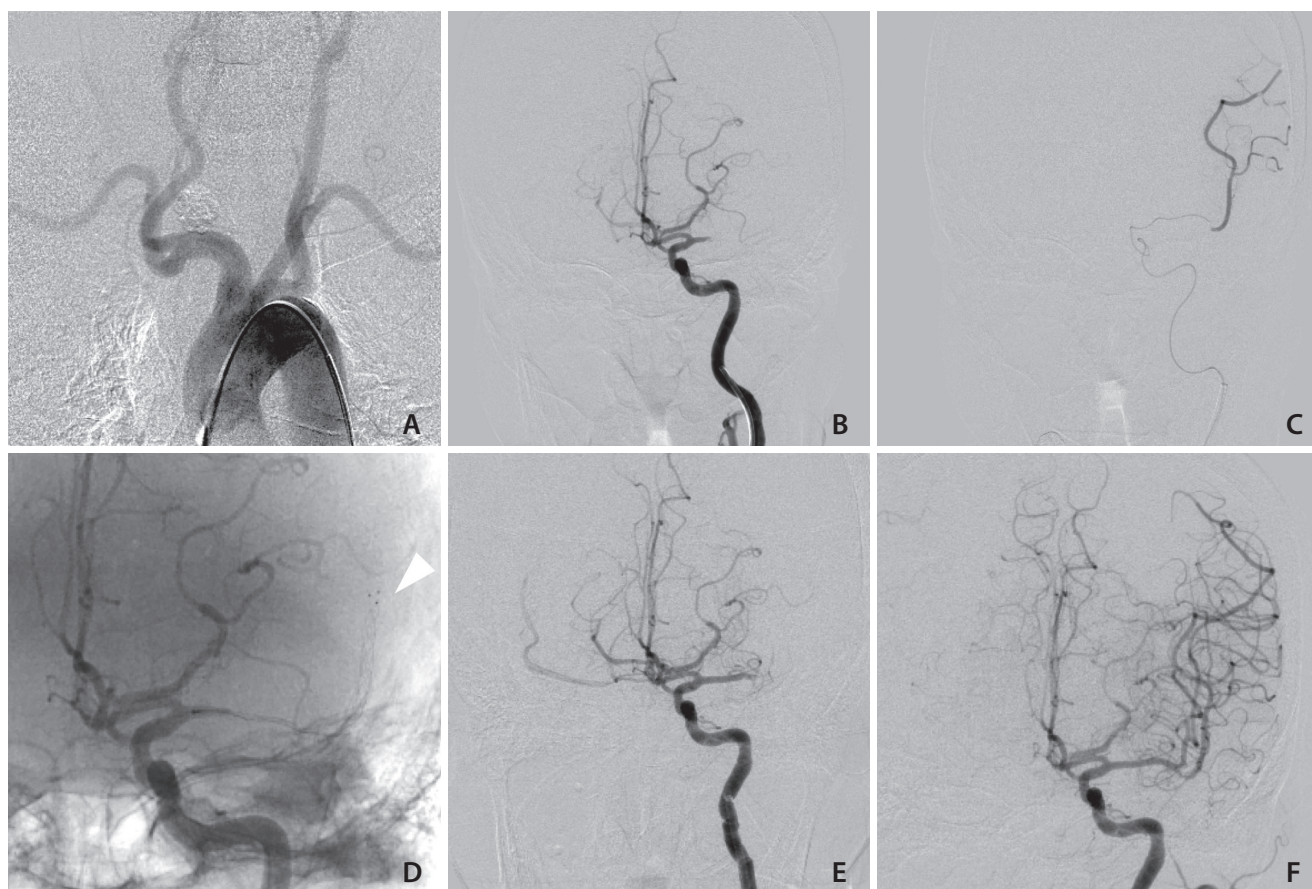


Fig. 2. Case 4. (A) The patient had a bovine arch, and the left common carotid artery was tortuous. (B) The left carotid angiogram shows occlusion of the M1 portion of the left middle cerebral artery. (C) The tip of the microcatheter was advanced beyond the occluded lesion. (D) Trevo XP Provue (Stryker, Kalamazoo, MI, USA) was passed and deployed. The arrowhead indicated the stent tip. (E) Digital subtraction angiography shows that M1 was occluded after thrombectomy using Trevo Xp Provue. (F) Thrombolysis as cerebral infarction (TICI) 2b reperfusion was achieved after thrombectomy using Sofia Flow Plus (MicroVention Terumo, Tustin, CA, USA).

Table 2. Procedural and clinical outcomes

Case no.	FTBP (min)	BPTR (min)	OTR (min)	Device	TICI Score	sICH	mRS at discharge
1	60	99	336	Penumbra ACE 68 Trevo XP Provue 6/25 mm	2a	No	5
2	55	30	210	Embotrap II	2b	Yes	6
3	83	37	855	Catalyst 6 Embotrap II	3	No	4
4	20	55	430	Trevo XP Provue 6/25 mm Sofiaflow Plus	2b	No	3
5	30	55	258	Sofiaflow Plus CAS	2b	No	1

FTBP, femoral puncture to brachial puncture; BPTR, brachial puncture to reperfusion; OTR, onset to reperfusion; TICI, thrombolysis as cerebral infarction; sICH, symptomatic internal cerebral hemorrhage; mRS, modified Rankin scale; CAS, carotid artery stenting.

due to vessel tortuosity.^{2,8} The main causes include anatomical factors such as Type III arch, bovine arch, and severe tortuous CCA.⁸ Access difficulties lead to delays in reperfusion

and poor clinical outcomes;⁸ therefore, alternative approaches need to be considered.

Haussen et al.² described 15 patients who underwent

thrombectomy using the transradial approach. Of these, 12 patients required a switch from the femoral artery and this took about 2 hours. In contrast, Sur et al.⁹ reported 8 cases using the transradial approach as the first choice. They evaluated the diagnosis and indication with three dimensional computed tomography (3D-CT) angiography and performed preoperative evaluation of the aortic arch before endovascular surgery. The average time from puncture of the radial artery to the first pass was 64 minutes.

CAS with the transbrachial approach has recently been reported.¹⁰⁻¹² Matsuda et al.¹³ reported that 9% (96/1,067) of CAS required the transbrachial approach. Conversely, there are a small number of reports regarding thrombectomy in acute ischemic stroke via the transbrachial approach.^{3,14}

Okawa et al.³ reported, for the first time, 3 cases of thrombectomy using the transbrachial approach. A 5 or 6 Fr sheath was inserted into the right brachial artery. One case involved a 6-Fr GC, and 2 cases used a distal access catheter without a GC.

Shibata et al.¹⁴ reported that a 5MAX (Penumbra Inc.) ACE aspiration catheter was directly inserted through a 6-Fr sheath without a GC, and complete recanalization was obtained in combination with a stent retriever. However, if the occlusion site is on the left side, it is difficult to guide the aspiration catheter directly to the left CCA, unless the aortic arch is of the bovine type. In addition, the aspiration catheter could kink during procedures in patients with steeply angled CCA. In left side lesions, careful examinations were performed. The acute angle of bifurcation of the CCA from the aorta increases the downward force into the aorta, and thus, a guiding sheath tends to fall into the aortic arch and cannot be guided to the CCA.

Nguyen et al.¹⁵ reported that a BGC has a higher reperfusion rate than a GC when using a stent retriever in thrombectomy. A 6-Fr guiding sheath has the same size inner lumen as a 9-Fr Optimo BGC, and has the advantage of allowing the use of an aspiration catheter and a stent retriever. However, since proximal flow control is not possible, the risk of distal migration is high, and we need to be careful to suction fully from an aspiration catheter and a GC.

In endovascular therapy via the transbrachial approach, a 5 to 6-Fr sheath or a 6-Fr guiding sheath are commonly used.^{3,10,12,14} It was reported that a 9-Fr Optimo BGC was inserted into the brachial artery without a sheath introducer in CAS,¹⁶ but a vessel inner diameter of >3.0 mm was required. It is necessary to examine vessel size in advance, using angio-

graphy or echocardiography; the method is therefore unrealistic in thrombectomy.

Kiemeneij et al.¹⁷ reported that the risk of complications associated with brachial artery access is 2.3%, and the risk is higher than that of the transfemoral approach. There are many soft tissues around the brachial artery, and insufficient hemostasis tends to occur. Median nerve palsy and pseudoaneurysm due to subcutaneous hematoma in the puncture site have been reported.¹⁷ In percutaneous coronary intervention, fewer complications associated with puncture with a 6 Fr sheath compared to an 8 Fr sheath are reported.¹⁷ Webber et al.¹⁸ reported that inserting a larger than 8-Fr sheath might increase the frequency of pseudoaneurysms.

The timing of switching from the transfemoral approach to the transbrachial approach is difficult, and decisions must be made early by observing the behavior of the guidewire and catheter. In the present study, it took about 60 minutes for the first 3 cases to be switched to the transbrachial approach. The element of experience could not be denied, in terms of determining when to change the approach.

In MT with acute ischemic stroke in the posterior circulation, it has been reported that the transradial approach could be used as the primary access in patients where the approach from the right vertebral artery is viable, based on prior magnetic resonance (MR) angiography.¹⁹

In order to select cases in which the transbrachial approach could be the first choice in the future, it is necessary for elderly patients to routinely undergo MR angiography or 3D-CT angiography that includes the aortic arch. In addition, the transbrachial approach is impossible for patients with stenotic lesions in the subclavian artery; MR angiography or 3D-CT angiography including the subclavian artery is therefore useful for detecting this before surgery.

The transbrachial approach may be better than the transradial approach for MT. The reasons are as follows. First, we could not perform a modified Allen's test exactly due to disturbance of consciousness. Second, guiding a catheter could cause delays due to radial artery spasm and increase pain during the procedure.

In this report, the number of cases was small. Therefore, further studies are necessary to confirm the effectiveness of the transbrachial approach.

The transbrachial approach for MT is feasible and can be an alternative approach to consider if the transfemoral approach is difficult. The number of aged patients with ischemic stroke is growing, and thrombectomy using this approach could

increase in the future.

Fund

None.

Ethics Statement

This study was approved by the local institutional review board.

Conflicts of Interest

The authors have no conflicts to disclose.

Author Contribution

Concept and design: YT. Analysis and interpretation: YT. Data collection: YT. Writing the article: YT. Critical revision of the article: TM, HK, KS, TY, and FS. Final approval of the article: YT. Statistical analysis: YT. Overall responsibility: YT.

ORCID

Yuichiro Tsuji: <https://orcid.org/0000-0002-4761-3248>

Hiroro Kakita: <https://orcid.org/0000-0002-5743-9829>

Kimitoshi Sato: <https://orcid.org/0000-0002-2104-5211>

Takashi Yoshida: <https://orcid.org/0000-0002-5499-4800>

REFERENCES

- Goyal M, Menon BK, van Zwam WH, Dippel DW, Mitchell PJ, Demchuk AM, et al.; HERMES collaborators. Endovascular thrombectomy after large-vessel ischaemic stroke: a meta-analysis of individual patient data from five randomised trials. *Lancet* 2016;387:1723-1731
- Haussen DC, Nogueira RG, DeSousa KG, Pafford RN, Janjua N, Ramdas KN, et al. Transradial access in acute ischemic stroke intervention. *J Neurointerv Surg* 2016;8:247-250
- Okawa M, Tateshima S, Liebeskind D, Ali LK, Thompson ML, Saver J, et al. Successful recanalization for acute ischemic stroke via the transbrachial approach. *J Neurointerv Surg* 2016;8:122-125
- Zaidat OO, Yoo AJ, Khatri P, Tomsick TA, von Kummer R, Saver JL, et al; Cerebral Angiographic Revascularization Grading (CARG) Collaborators; STIR Revascularization working group; STIR Thrombolysis in Cerebral Infarction (TICI) Task Force. Recommendations on angiographic revascularization grading standards for acute ischemic stroke: a consensus statement. *Stroke* 2013;44:2650-2663
- Hacke W, Kaste M, Fieschi C, von Kummer R, Davalos A, Meier D, et al. Randomised double-blind placebo-controlled trial of thrombolytic therapy with intravenous alteplase in acute ischaemic stroke (ECASS II). Second European-Australasian Acute Stroke Study Investigators. *Lancet* 1998;352:1245-1251
- Criado FJ. Mastering carotid intervention: what you need to know before performing your next CAS procedure. *Endovascular Today* 2003;9:65-68
- Saver JL, Goyal M, van der Lugt A, Menon BK, Majoie CB, Dippel DW, et al.; HERMES Collaborators. Time to treatment with endovascular thrombectomy and outcomes from ischemic stroke: a meta-analysis. *JAMA* 2016;316:1279-1288
- Ribo M, Flores A, Rubiera M, Pagola J, Mendonca N, Rodriguez-Luna D, et al. Difficult catheter access to the occluded vessel during endovascular treatment of acute ischemic stroke is associated with worse clinical outcome. *J Neurointerv Surg* 2013;5 Suppl 1:i70-i73
- Sur S, Snelling B, Khandelwal P, Caplan JM, Peterson EC, Starke RM, et al. Transradial approach for mechanical thrombectomy in anterior circulation large-vessel occlusion. *Neurosurg Focus* 2017;42:E13
- Matsumoto H, Masuo O, Takemoto H, Kawabe R, Hirohata Y, Itakura T. [Carotid artery stenting via the transbrachial approach]. *JNET* 2007;1:40-44 Japanese.
- Montorsi P, Galli S, Ravagnani PM, Trabattini D, Fabbicchi F, Lualdi A, et al. Carotid artery stenting in patients with left ICA stenosis and bovine aortic arch: a single-center experience in 60 consecutive patients treated via the right radial or brachial approach. *J Endovasc Ther* 2014;21:127-136
- Sakamoto S, Matsushige T, Abiko M, Shimonaga K, Hosogai M, Okazaki T, et al. Navigation of a 6-French guiding sheath into the common carotid artery using a tri-axial catheter system in transbrachial carotid artery stenting. *Interv Neuroradiol* 2019;25:38-43
- Matsuda Y, Terada T, Masuo O, Matsumoto H, Ohshima K, Tsutomoto T, et al. The clinical results of transcervical carotid artery stenting and frequency chosen as the approach route of carotid artery stenting in 1,067 consecutive cases. *Acta Neurochir (Wien)* 2013;155:1575-1581
- Shibata T, Oomura M, Nishikawa Y, Mase M. Direct brachial approach for acute basilar artery occlusion: technical note and preliminary clinical experience. *Neurointervention* 2020;15:31-36
- Nguyen TN, Malisch T, Castonguay AC, Gupta R, Sun CH, Martin CO, et al. Balloon guide catheter improves revascularization and clinical outcomes with the Solitaire device: analysis of the North American Solitaire Acute Stroke Registry. *Stroke* 2014;45:141-145

16. Koge J, Iwata T, Hashimoto T, Mizuta S, Nakamura Y, Tanaka E, et al. Carotid artery stenting with proximal embolic protection via the transbrachial approach: sheathless navigation of a 9-F balloon-guiding catheter. *Neuroradiology* 2018;60:1097-1101
17. Kiemeneij F, Laarman GJ, Odekerken D, Slagboom T, van der Wieken R. A randomized comparison of percutaneous transluminal coronary angioplasty by the radial, brachial and femoral approaches: the access study. *J Am Coll Cardiol* 1997;29:1269-1275
18. Webber GW, Jang J, Gustavson S, Olin JW. Contemporary management of postcatheterization pseudoaneurysms. *Circulation* 2007;115:2666-2674
19. Mizokami T, Uwatoko T, Furukawa T, Higashi E, Sakaki Y, Suet-sugi N, et al. Transradial approach for mechanical thrombectomy of posterior circulation stroke. *J Neuroendovascular Ther* 2018;12:314-319