

Prognostic factors in neuroendocrine cervical carcinoma

Da Yong Lee¹, Chul Chong¹, Maria Lee^{1,2}, Jae Weon Kim^{1,2}, Noh Hyun Park^{1,2}, Yong Sang Song^{1,2}, Sang Yoon Park³

Department of Obstetrics and Gynecology, ¹Seoul National University Hospital, Seoul, ²Seoul National University College of Medicine, Seoul; ³Center for Uterine Cancer, Research Institute and Hospital, National Cancer Center, Goyang, Korea

Objective

To evaluate the clinical and pathologic factors associated with survival in patients with neuroendocrine cervical carcinoma (NECC).

Methods

The records of 61 patients with NECC diagnosed between 2000 and 2014 at Seoul National University Hospital and the National Cancer Center were retrospectively reviewed. Kaplan-Meier and Cox regression methods were used for analyses.

Results

Of the 61 patients, 67.2% were diagnosed at early stage (I to IIA) with a median age of 49 years. Of those, 78% underwent surgery and 75.6% received postoperative adjuvant treatment. For patients diagnosed at advanced stage, 60.0% received chemotherapy only and 25.0% received concurrent chemoradiation therapy. In the univariate analysis, advanced stage (77 vs. 40 months, $P=0.013$), tumor size ≥ 2 cm (133 vs. 47 months, $P=0.002$) and mixed tumor (101 vs. 34 months, $P=0.004$) were shown to be poor prognostic factors. In the multivariate analysis, tumor stage, tumor size and tumor homology were shown to be independent prognostic factors for overall survival. Of the total, 39.3% of the patients experienced recurrence, and 54.1% of the patients had metastasis. Of the patients diagnosed at early stage, 51.2% experienced recurrence.

Conclusion

Tumor stage, tumor size and tumor homology were found to be independent prognostic factors in patients with NECC. Even in patients diagnosed at early stage, recurrence and distant metastasis were frequently observed.

Keywords: Cervical carcinoma; Neoplasm recurrence; Neuroendocrine carcinoma; Retrospective studies; Small cell carcinoma

Introduction

Neuroendocrine cervical carcinoma (NECC) is a rare form of cervical cancer representing 0.5% to 5% of all cervical cancer cases. NECC is classified into four histologic subtypes (small cell, large, classical carcinoid and atypical carcinoid, with small cell carcinoma of cervix (SCCC) being the most frequent type [1]. Neuroendocrine carcinomas can be identified by characteristic light and electron microscopic criteria, such as small cells with hyperchromatic nuclei and scanty cytoplasm. NECC can be present with other histologic findings, such as squamous cell and adenocarcinoma, and the presence of the NECC component defines the clinical behavior [2].

The clinical course of SCCC is aggressive, and metastasis to the bone, brain, liver, and bone marrow is common [3]. The relapse and metastasis pattern infers the nature of hematog-

enous dissemination [4]. Despite its known clinical behavior, there is no consistent method of treatment. The treatment regimen is based on small cell lung cancer, where the micro-

Received: 2015.5.17. Revised: 2015.9.30. Accepted: 2015.10.21.

Corresponding author: Maria Lee

Department of Obstetrics and Gynecology, Seoul National University Hospital, 101 Daehak-ro, Jongno-gu, Seoul 03080, Korea

Tel: +82-2-2072-2842 Fax: +82-2-762-3599

E-mail: marialeemd@gmail.com

http://orcid.org/0000-0002-8017-3176

Articles published in Obstet Gynecol Sci are open-access, distributed under the terms of the Creative Commons Attribution Non-Commercial License (<http://creativecommons.org/licenses/by-nc/3.0/>) which permits unrestricted non-commercial use, distribution, and reproduction in any medium, provided the original work is properly cited.

Copyright © 2016 Korean Society of Obstetrics and Gynecology

scopic characteristics are similar. This regimen is also applied to other types of NECC. Interestingly, Hoskins et al. [5] reported a three-year failure-free survival rate of 80% in early stages (I to II) patients who received primary radiation therapy and platinum-based combination chemotherapy. A recent study showed that primary radiation therapy with at least 5 cycles of platinum-based chemotherapy resulted in a five-year overall survival rate of 78%, better than that of 46% achieved through primary surgery alone in early stage SCCC [6]. However, some studies have reported primary radical surgery followed by adjuvant chemotherapy as the preferred treatment modality with relatively favorable survival outcomes [7].

Due to the low incidence of NECC, it is very difficult to undertake prospective studies to elucidate the impact of treatment modality on survival outcome. Moreover according to our review, there are not enough studies with sufficient cases in the Korean population. Thus, to understand the prognosis in our population and improve the treatment strategy, we evaluated the clinical and pathologic factors associated with survival in patients with NECC in two of the cancer institutes in Korea.

Materials and methods

Patients diagnosed with NECC and treated between 2000 and 2014 at Seoul National University Hospital and the National Cancer Center were included in the study. One case of a patient who died due to sepsis caused by aggravating myelodysplastic syndrome was excluded. Clinicopathologic data were collected from hospital charts and scanned records. Staging was done based on International Federation of Gynecology and Obstetrics (FIGO) clinical staging criteria. Early stage was defined as stage I to IIA and advanced stage was as stages IIB and above. All patients underwent physical examination, imaging study (pelvic computed tomography, chest computed tomography and pelvic magnetic resonance imaging if indicated), intravenous pyelography, and cystoscopy. Patients with tumors confined to the cervix typically underwent radical hysterectomy with pelvic lymphadenectomy. For advanced cases, radiotherapy with or without chemotherapy was performed. Adjuvant therapy using chemotherapy or concurrent chemoradiation therapy (CCRT) was carried out except for in one case of stage 1B1. The association between risk factors and prognosis was evaluated using Kaplan-Meier survival analyses and log-rank tests. The independent factors found to be predictive

of survival were evaluated using Cox regression methods. *P*-values <0.05 were considered significant. All analyses were performed using PASW ver. 18.0 (SPSS Inc., Chicago, IL, USA) and MedCalc ver. 15.8 (MedCalc Software bvba., Acaciaaan, Ostend, Belgium). The institutional review board approval number for this study is 1507-013-686.

Results

A total of 61 patients were diagnosed and treated in this study. The median age was 49 years (range, 28 to 74), and

Table 1. Patients' clinicopathologic characteristics (n=61)

Variable	Value
Age (yr)	49 (28–74)
Parity	2 (0–5)
Menopause	21 (34.4)
HRT	2 (3.3)
Smoking	2 (3.3)
Stage	
IB	34 (55.7)
IIA	7 (11.5)
IIB	9 (14.8)
IIIB	3 (4.9)
IVB	8 (13.1)
Histology	
Small cell	41 (67.2)
Large cell	7 (11.5)
Other type	13 (21.3)
Tumor size (cm)	3.9 (0.5–9.2)
<2	10 (16.4)
≥2	51 (83.6)
Tumor homology (pathologic examination, n=36)	
Pure	17 (47.2)
Mixed	19 (52.8)
LVSI (operation, n=34)	20 (58.8)
Lymph node involvement (LND, n=33)	5 (15.2)
Neuroendocrine markers (n=43)	
Synaptophysin	33 (76.7)
Chromogranin	30 (69.8)
CD56	30 (69.8)

Values are presented as median (range) or number (%).

HRT, hormone replacement therapy; LVSI, lymphovascular space invasion; LND, lymph node dissection.

Table 2. Treatment methods of neuroendocrine cervical carcinoma by tumor stage

Early stage (n=41)	n (%)	Advanced stage (n=20)	n (%)
Initial treatment		Initial treatment	
Radical hysterectomy	32 (78.0)	Chemotherapy	12 (60)
CCRT	5 (12.2)	CCRT	5 (25)
Chemotherapy	2 (4.9)	Surgery	2 (10)
Radiation therapy	1 (2.4)	Radiation therapy	1 (5)
Observation	1 (2.4)		
Adjuvant treatment			
Chemotherapy	18 (58.1)		
CCRT	13 (41.9)		

CCRT, concurrent chemoradiation therapy.

Table 3. Initial chemotherapy regimen of neuroendocrine cervical carcinoma

Initial chemotherapy regimen	No.
Etoposide-cisplatin	31
Taxol-carboplatin	7
Etoposide-carboplatin	3
5Fluorouracil-cisplatin	3
Cyclophosphamide-adriamycin-cisplatin	1

41 patients had early-stage (I to IIA) disease. Patients' demographic and clinicopathologic characteristics are shown in Table 1. Small cell carcinoma was the most common histologic type, comprising 67.2% of the cases. Among early-stage patients treated by radical hysterectomy, lymphovascular space invasion was found in 19 cases (59.3%). By immunohistochemistry, the three types of neuroendocrine marker (synaptophysin, chromogranin, and CD 56) were stained with similar frequency.

Tables 2 and 3 show the treatment methods of the 61 patients. Of the early-stage patients, 32 (78%) underwent radical hysterectomy as a primary treatment. Among them, 22 (68.8%) patients underwent pelvic lymph node dissection and of those, eight patients underwent additional para-aortic lymph node dissection. Adjuvant therapy using chemotherapy or CCRT was conducted in most (31/32) cases. There was no specific difference in median survival between chemotherapy and CCRT. For advanced-stage patients, the main treatment modalities were chemotherapy (60%) and CCRT (25%). There was no significant difference in prognosis between the two groups. Two patients underwent primary surgery. One stage IIB patient underwent pelvic exenteration and another stage

IIB patient underwent pelvic and para-aortic lymph node dissection before CCRT.

Post-treatment surveillance was conducted every three months. For patients experiencing recurrence, radiation and/or chemotherapy were employed. As a first-line chemotherapeutic agent, etoposide was used most frequently (Table 3). The efficacy of the different regimens was not clearly proved in this study.

We evaluated the significance of various clinical factors that may influence the prognosis and overall survival (Table 4, Fig. 1). Early-stage patients had a median survival time of 77 months compared with 40 months in the advanced-stage group ($P=0.013$). The estimated five-year survival rate was 42.1% for early-stage patients and 23.7% for advanced-stage patients. In all cases, patients with tumor size ≥ 2 cm had a median survival time of 47 months compared with 133 months in those with tumor size <2 cm. To remove the stage factor, a subgroup analysis on the early-stage group was done. Early-stage patients with tumor size ≥ 2 cm had a median survival time of 44 months compared with 130 months in the group with tumor size <2 cm. Other pathologic factors that may influence prognosis (e.g., residual tumor, tumor homology, lymph node involvement, lymphovascular space invasion, neuroendocrine markers) were also evaluated. In all of the radical hysterectomy cases, the resection margin was free from carcinoma. Of the histologic factors, only mixed histology proved to be a poor prognostic factor ($P=0.004$). Age had no significant effect on survival. All the preceding factors were re-evaluated only in small cell neuroendocrine carcinoma subtype cases and the statistical results were similar with identical prognosis factors. In the multivariate analysis, tumor stage,

Table 4. Univariate and multivariate analysis for overall survival

Variables	Univariate			Multivariate	
	Median survival (mo)	P-value	Hazard ratio	Hazard ratio	P-value
Stage					
I-IIA	77	-	-	-	-
IIB-IV	40	0.013	2.24	9.369	0.015
Tumor size (all stage, cm)					
<2	133	-	-	-	-
≥2	47	0.002	6.61	5.556	0.022
Tumor size (early stage, cm)					
<2	130	-	-	-	-
≥2	44	0.006	5.77	-	-
Tumor homology					
Pure	101	-	-	-	-
Mixed	34	0.004	3.24	2.860	0.020
Lymph node involvement (early stage)					
No	80	-	-	-	-
Yes	59	0.334	-	-	-
Lymphovascular space invasion					
No	90	-	-	-	-
Yes	57	0.298	-	-	-
Chromogranin					
Negative	27	-	-	-	-
Positive	76	0.114	-	-	-
Age (yr)					
<49	77	-	-	-	-
≥49	51	0.380	-	-	-
Menopause					
No	70	-	-	-	-
Yes	61	0.778	-	-	-
Etoposide containing regimen vs. others					
Etoposide containing	51	-	-	-	-
Others (primary regimen)	66	0.518	-	-	-

tumor size and tumor homology proved to be significant independent prognostic factors. Immunohistochemical analysis was performed in 43 of 61 cases. In the remaining 18 cases, only microscopic diagnosis was performed. Thus, subgroup analysis was performed particularly in immunohistochemically confirmed cases and the statistical results were similar.

Sites of metastasis at diagnosis and frequent recurrence sites after initial treatment are shown in Table 5. Major primary metastatic sites were the liver and bone. Tumor recurrence

was found in 39.3% of all patients. Despite the large early-stage group, the recurrence rate was 51.2%. Main sites of distant recurrence were the lung and liver.

Discussion

NECC is a rare form of cervical carcinoma and consequently, prospective randomized trials to evaluate the impact of differ-

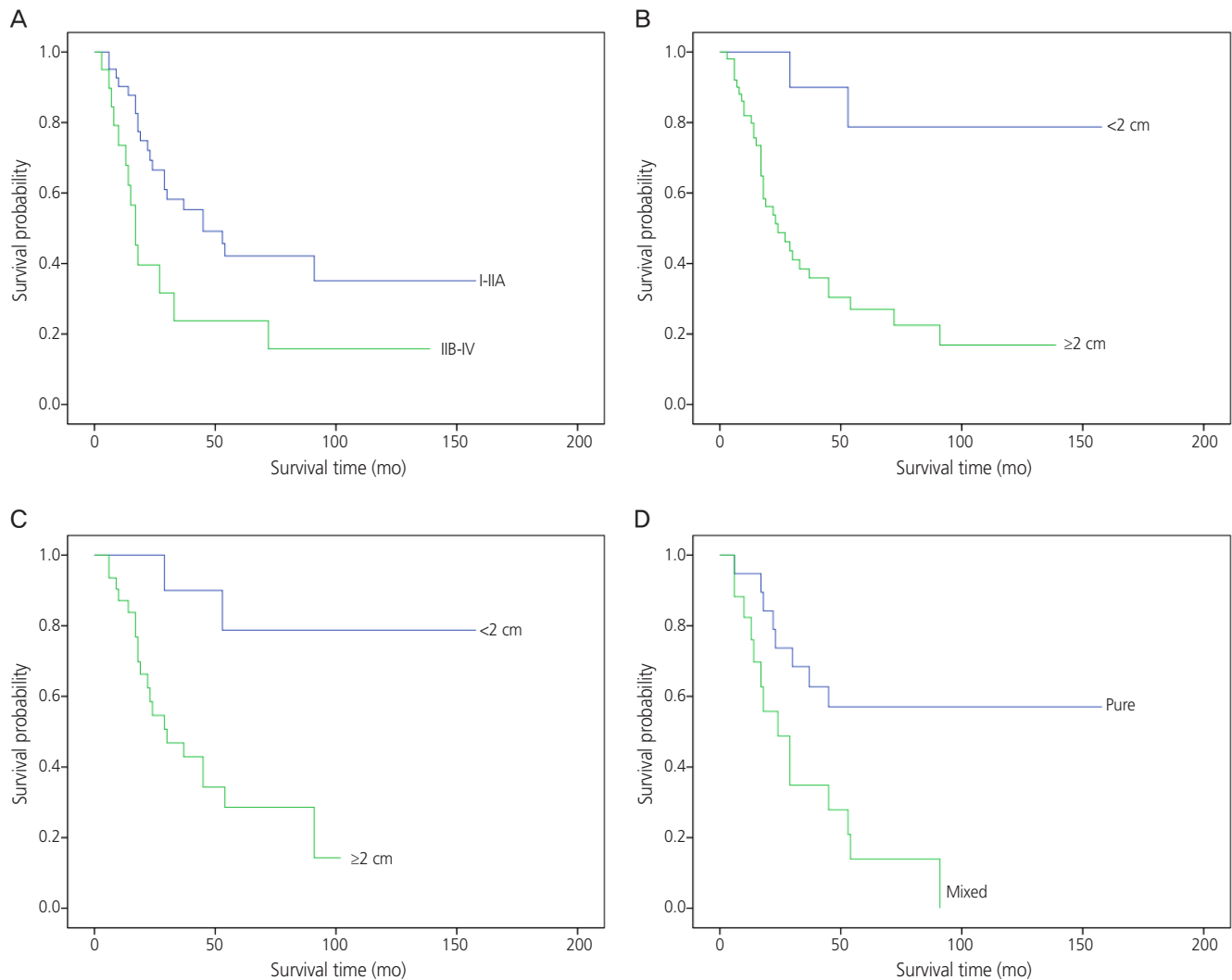


Fig. 1. Overall survival estimates stratified by (A) tumor stage, (B) tumor size in all stage, (C) tumor size in early stage, and (D) tumor homology.

Table 5. Site of metastasis at diagnosis and recurrence site after treatment

Metastasis at diagnosis	No.	Recurrence site	No.
Liver	5	Lung	17
Bone	5	Liver	8
Lung	3	Vagina (stump)	6
SCLN	1	Brain	3
		Bone	3
		Pelvic wall	2
		Others ^{a)}	4

SCLN, supraclavicular lymph node.

^{a)}Omentum 1 case, kidney 1 case, left ovary 1 case, and vulva 1 case.

ent treatments on patient outcome have not been possible. In recent years, novel NECC treatment methods have attempted to replicate successful treatments for small cell lung carcinoma. Currently, surgical resection only plays a limited role in patients with early-stage small cell lung cancer [8]. Moreover, a report has suggested that radical hysterectomy does not prolong the survival of SCCC patients [5]. However, our results showed that radical surgery is an important component in the multimodal treatment of NECC. The survival rate in this study was better than that in previous studies. For example, Cohen et al. [9] previously analyzed the survival outcomes of 188 patients from 1979 to 2005 and found the estimated five-year survival rate to be 36.8% for early-stage patients and

only 8.9% for advanced-stage patients. In our study, the rates were 42.1% and 23.7% respectively. Some factors may have contributed to the improvement of survival. First, in all surgical cases the resection margin was free from cancer. Improved surgical skills and the use of frozen section examination during the surgery may have contributed to this progression. Second, Deacon et al. [10] and Chan et al. [11] have suggested smoking as a poor prognostic factor in cervical cancer and SCCC respectively. In our case, there were only two patients with history of smoking and that may be attributed to the low female smoking rate in the Korean population. Third, due to the limited randomized controlled clinical trial for NECC, some therapeutic guidelines (e.g., multimodality therapy on early-stage patients, using etoposide-containing chemotherapeutic regimens) were suggested [9,12]. These may have led to the improved outcome.

Several studies have reported disease stage as the strongest predictor of outcome, and that other factors (age, tumor size, depth of stromal invasion, and vascular space invasion) as prognostic factors in SCCC [7]. However, in our study, FIGO stage, tumor size, and tumor homology were independent prognostic factors of survival, and our univariate and multivariate analyses found no association between age, depth of stromal invasion, or vascular space invasion and NECC patient outcome. In a previous study, patients with a mixed histologic pattern had a better prognosis than those with a homogenous pattern [11]. However, others found no relationship between tissue homology and prognosis [12,13]. In our study, patients with a homogenous histologic pattern had a better prognosis, but racial and etiologic differences (e.g., low smoking rates, human papillomavirus infection) may be confounding factors, and further studies with more cases are required to clarify this correlation.

A previous study reported the effectiveness of etoposide with platinum-based chemotherapy for NECC but not for well-differentiated carcinoid tumors [2]. Chang et al. [12] found that chemotherapies containing cisplatin and etoposide could be effective in patients with early-stage SCCC following radical hysterectomy. A recent study showed that platinum-based combination chemotherapy was an independent prognostic factor for improved survival in patients with SCCC [14]. In our current study, there were no prognostic differences between etoposide and other regimens. More well-designed case-control studies are needed to verify effect of the regimen. The overall tumor recurrence rate was 39.3%, and the

early-stage recurrence rate was as high as 51.2%. Because of the limited number of patients in our study, we could not detect a significant survival benefit in patients who received adjuvant chemotherapy. However, considering the features of early recurrence and distant metastasis with NECC, it is likely that adjuvant chemotherapy would enhance survival relative to radiation alone.

In conclusion, tumor stage and tumor size may act as surrogates for factors prognostic of survival in patients with NECC. Moreover, our results indicate that primary radical surgery followed by adjuvant chemotherapy may be the preferred treatment modality for patients with early-stage NECC.

Conflict of interest

No potential conflict of interest relevant to this article was reported.

References

1. Albores-Saavedra J, Gersell D, Gilks CB, Henson DE, Lindberg G, Santiago H, et al. Terminology of endocrine tumors of the uterine cervix: results of a workshop sponsored by the College of American Pathologists and the National Cancer Institute. *Arch Pathol Lab Med* 1997;121:34-9.
2. Gardner GJ, Reidy-Lagunes D, Gehrig PA. Neuroendocrine tumors of the gynecologic tract: a Society of Gynecologic Oncology (SGO) clinical document. *Gynecol Oncol* 2011;122:190-8.
3. Delaloge S, Pautier P, Kerbrat P, Castaigne D, Haie-Meder C, Duvillard P, et al. Neuroendocrine small cell carcinoma of the uterine cervix: what disease? What treatment? Report of ten cases and a review of the literature. *Clin Oncol (R Coll Radiol)* 2000;12:357-62.
4. Viswanathan AN, Deavers MT, Jhingran A, Ramirez PT, Levenback C, Eifel PJ. Small cell neuroendocrine carcinoma of the cervix: outcome and patterns of recurrence. *Gynecol Oncol* 2004;93:27-33.
5. Hoskins PJ, Swenerton KD, Pike JA, Lim P, Aquino-Parsons C, Wong F, et al. Small-cell carcinoma of the cervix: fourteen years of experience at a single institution using a combined-modality regimen of involved-field irradiation

- and platinum-based combination chemotherapy. *J Clin Oncol* 2003;21:3495-501.
6. Chen TC, Huang HJ, Wang TY, Yang LY, Chen CH, Cheng YM, et al. Primary surgery versus primary radiation therapy for FIGO stages I-II small cell carcinoma of the uterine cervix: a retrospective Taiwanese Gynecologic Oncology Group study. *Gynecol Oncol* 2015;137:468-73.
 7. Lee JM, Lee KB, Nam JH, Ryu SY, Bae DS, Park JT, et al. Prognostic factors in FIGO stage IB-IIA small cell neuroendocrine carcinoma of the uterine cervix treated surgically: results of a multi-center retrospective Korean study. *Ann Oncol* 2008;19:321-6.
 8. Tsuchiya R, Suzuki K, Ichinose Y, Watanabe Y, Yasumitsu T, Ishizuka N, et al. Phase II trial of postoperative adjuvant cisplatin and etoposide in patients with completely resected stage I-IIIa small cell lung cancer: the Japan Clinical Oncology Lung Cancer Study Group Trial (JCOG9101). *J Thorac Cardiovasc Surg* 2005;129:977-83.
 9. Cohen JG, Kapp DS, Shin JY, Urban R, Sherman AE, Chen LM, et al. Small cell carcinoma of the cervix: treatment and survival outcomes of 188 patients. *Am J Obstet Gynecol* 2010;203:347.e1-6.
 10. Deacon JM, Evans CD, Yule R, Desai M, Binns W, Taylor C, et al. Sexual behaviour and smoking as determinants of cervical HPV infection and of CIN3 among those infected: a case-control study nested within the Manchester cohort. *Br J Cancer* 2000;83:1565-72.
 11. Chan JK, Loizzi V, Burger RA, Rutgers J, Monk BJ. Prognostic factors in neuroendocrine small cell cervical carcinoma: a multivariate analysis. *Cancer* 2003;97:568-74.
 12. Chang TC, Lai CH, Tseng CJ, Hsueh S, Huang KG, Chou HH. Prognostic factors in surgically treated small cell cervical carcinoma followed by adjuvant chemotherapy. *Cancer* 1998;83:712-8.
 13. Bermudez A, Vighi S, Garcia A, Sardi J. Neuroendocrine cervical carcinoma: a diagnostic and therapeutic challenge. *Gynecol Oncol* 2001;82:32-9.
 14. Huang L, Liao LM, Liu AW, Wu JB, Cheng XL, Lin JX, et al. Analysis of the impact of platinum-based combination chemotherapy in small cell cervical carcinoma: a multi-center retrospective study in Chinese patients. *BMC Cancer* 2014;14:140.