

## A Case of Pneumatosis Intestinalis Induced by Chemotherapy in a Patient with Lung Cancer

Pneumatosis intestinalis is an uncommon condition that is characterized by the presence of gas within the bowel wall. We experienced a case of pneumatosis intestinalis after cessation of chemotherapy and we herein report on this case. A 58-year old man was admitted to our hospital for the evaluation of incidentally recognized pneumatosis intestinalis. He was diagnosed as having non small cell lung cancer in August 2006 and he received radiation therapy for concomitant brain metastasis and SVC syndrome in September 2006. He achieved a partial response after completing 6 cycles of chemotherapy with gemcitabine and cisplatin. Newly enlarged lymph nodes were observed on the follow-up CT, and chemotherapy with paclitaxel and carboplatin was started in July 2007. Due to the lack of a response, the therapeutic regimen was switched to oral erlotinib. After 1 month of treatment, the follow-up CT for response evaluation revealed pneumatosis intestinalis in the ascending colon without any subjective symptoms such as fever or abdominal pain. The laboratory results were within the normal range except for a slight increase of leukocytes. He underwent right hemicolectomy, but he didn't survive his postoperative acute renal failure and pneumonia. (**J Lung Cancer** 2008;7(2):101 – 102)

**Key Words:** Pneumatosis intestinalis, Chemotherapy, Non small cell lung cancer

Mi-Hye Kwon, M.D.  
Sun-Jung Kwon, M.D.  
Eugene Choi, M.D.  
Moon-Jun Na, M.D. and  
Ji-Woong Son, M.D.

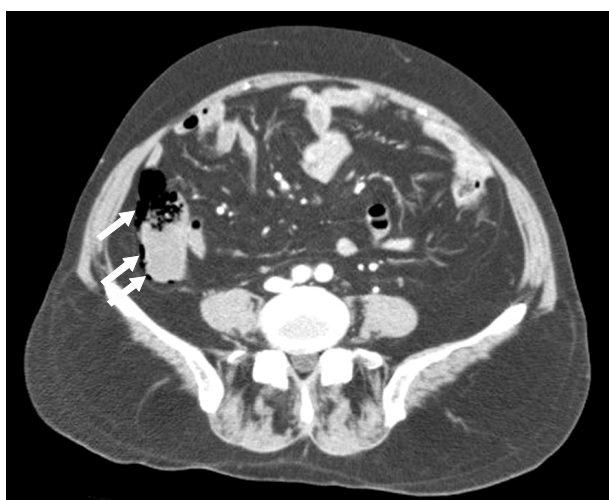
Department of Internal Medicine, Konyang University College of Medicine, Daejeon, Korea

**Received:** August 5, 2008

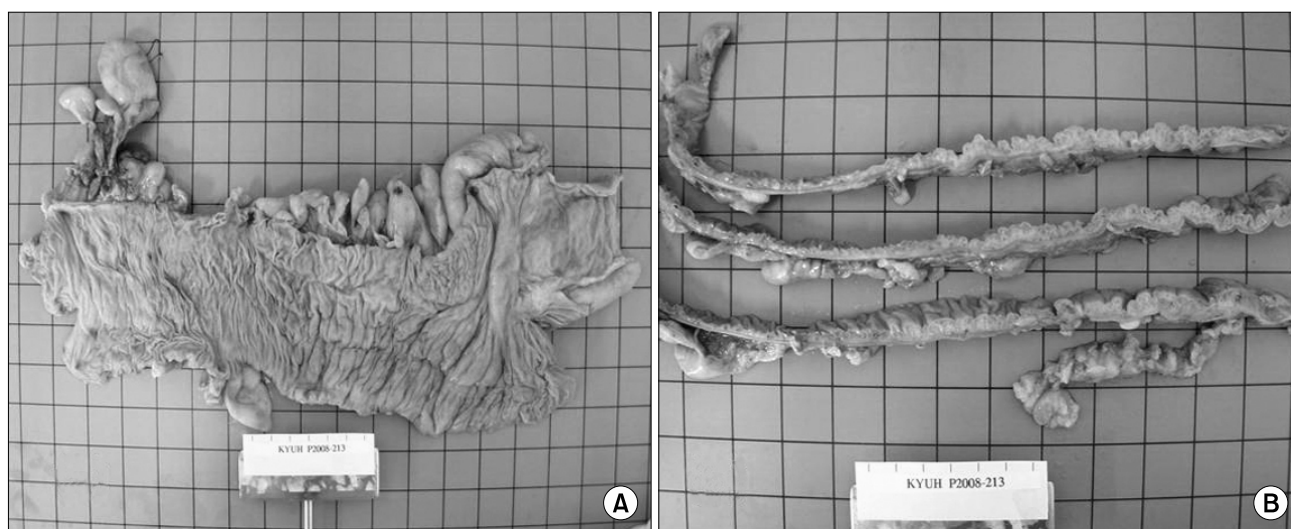
**Accepted:** October 13, 2008

### Address for correspondence

Ji-Woong Son, M.D.  
Department of Internal Medicine,  
Konyang University Hospital, 685,  
Gasuwon-dong, Seo-gu, Daejeon 302-718, Korea  
Tel: 82-42-600-8817  
Fax: 82-42-600-9090  
E-mail: sk1609@hanmail.net



**Fig. 1.** Abdominal CT shows air in the wall of the ascending colon (arrows).



**Fig. 2.** (A) Gross appearance of the right hemicolectomy specimen. (B) The section shows numerous air-containing cysts.