

**Weon-Wook Park, M.D., Tae-Wook Nam, M.D., Seong-Jun Ahn, M.D.\*,  
Seong-Ho Yoo, M.D.\*, Hyong-Guen Moon<sup>§</sup>**

– Abstract –

**Key Word :** Idiopathic scoliosis, Traction thoracolumbosacral orthosis

- 248 -

(17.~41.) , group II 29. (20.~43.) group  
 I 78%(56~124%) group II 75%(61~117%)  
 group I 17.9. (6.~34.) , group II  
 4.7. (-1 ~10.) group I  
 가 , 1 group I  
 15.4. (3.~32.) group II 2.7 ° (-14 ~8 °)  
 group I 가 .  
 group I 59.5% (14~95%)  
 group II 15.4% (-5~32%) , 1  
 group I 54.2% (12~100%) group  
 II 7.8% (-70~25.8%)  
 가 (P 0.05).  
 group I mild 가 4 , group II  
 mild 가 3 group I moder-  
 ate 가 1 , mild 가 3 , group II  
 mild 가 3 .

가

가

TLSO)

가 , 가  
 halter (Traction

6~9 kg head halter

가  
 plastic molding  
 (Fig. 1).

(group I)

21

17 (group II)  
 . Group I 2 , 19 , group II  
 2 , 15 group I 12  
 (10~13 ) group II 13 (11~14 ) .  
 1

(severe, moderate, mild, none)  
 (severe, moderate, mild,  
 none) SPSS  
 Student t-test P 0.05  
 가 ..  
 : Risser grade 0,1,2,3  
 Cobb 가 20 ~50 °

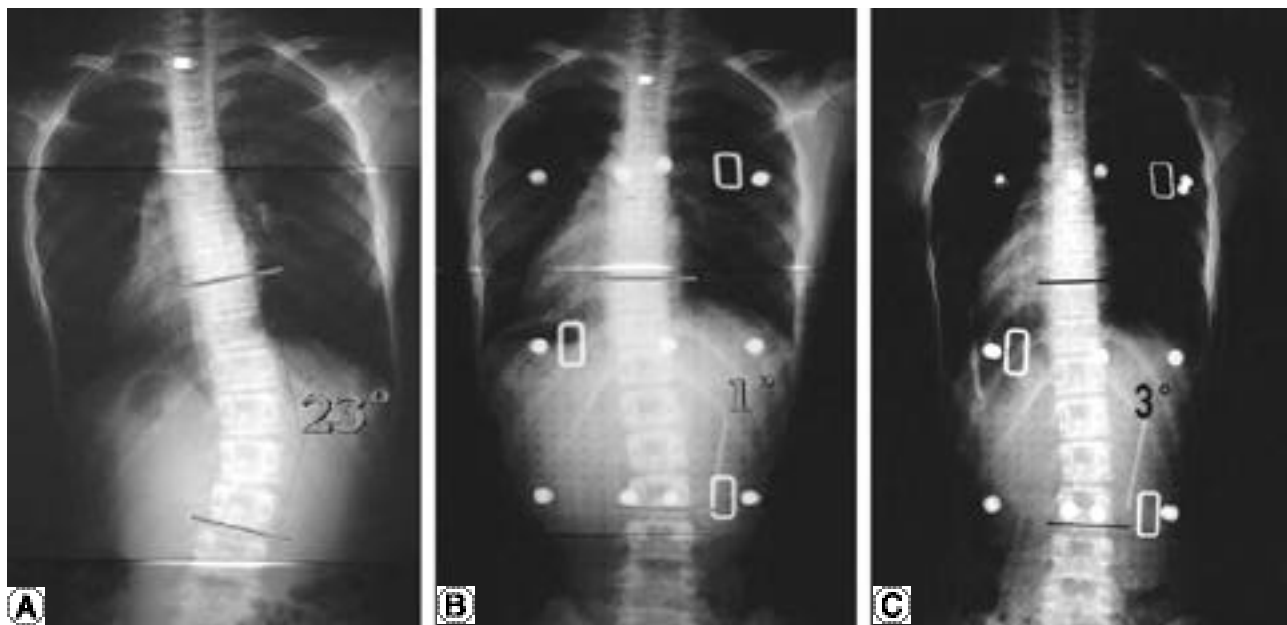
1945 Blount <sup>1)</sup>

가  
 1960 ~1970 .  
<sup>2)</sup> (1) neck ring , 가  
 (longitudinal  
 distraction)  
 (active stimulation) (2) 가 occipital  
 pad (passive longitudinal

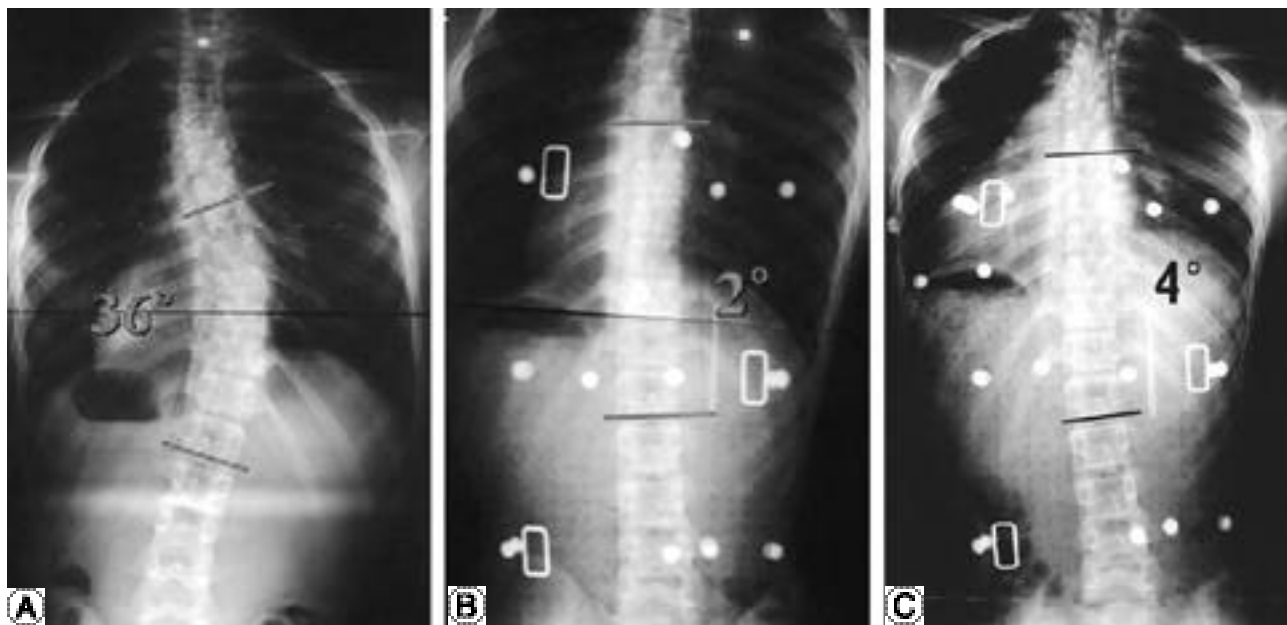


**Fig. 1.** Tractional TLSO : cervical traction is applied to the patient who stand under the frame with application of lateral force with compression pad.

group I 31.

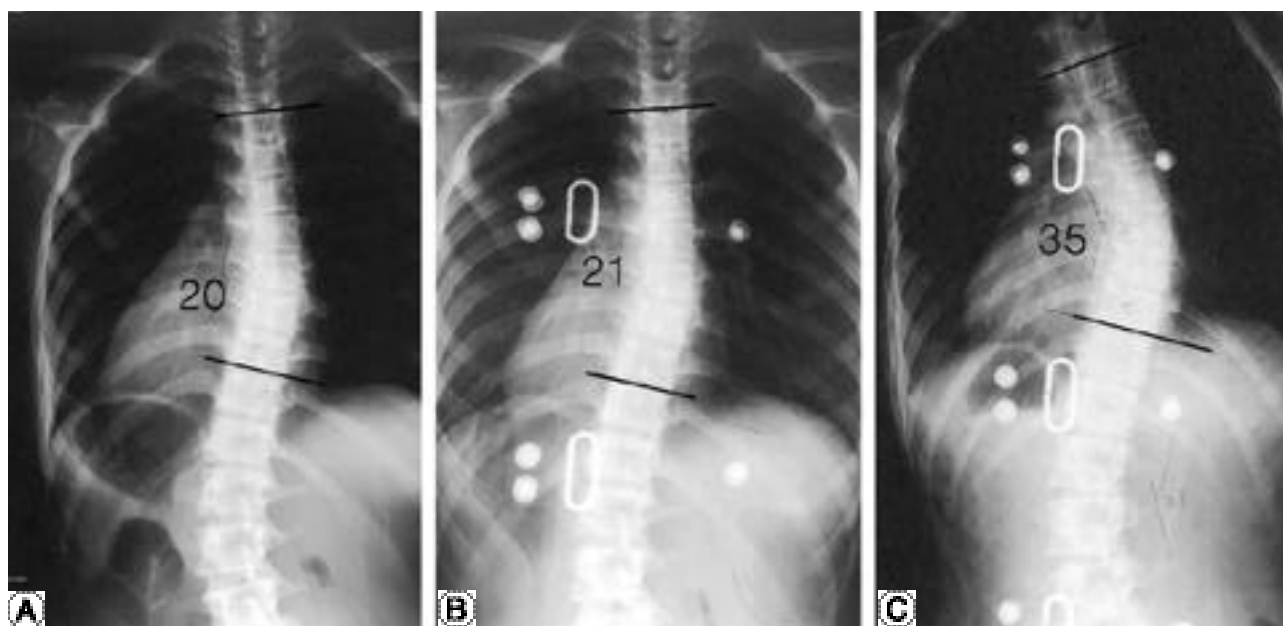


**Fig. 2.** A. Right thoracolumbar curve of 23 degrees in the prebrace.  
 B. Traction TLSO was fitted with excellent correction to 1 degree after 3days.  
 C. Traction TLSO was fitted with excellent correction to 3 degrees after 1year.



**Fig. 3.** A. Right thoracic curve of 36 degrees in the prebrace.  
 B. Traction TLSO was fitted with excellent correction to 2 degrees after 3days.  
 C. Traction TLSO was fitted with excellent correction to 4 degrees after 1year.

distrastion) (3)		Miller	
pelvic girdle	(4) 3		pelvic girdle
(3-point pressure principle)			throat mold
(passive transverse corrective force)	.		
가	가	3,4,5,6가	.
Boston brace <sup>7)</sup>	1971 Hall	Boston brace	(1)
		(2) 3	(3-point pressure



**Fig. 4.A.** Right thoracic curve of 20 degrees in the prebrace.

**B.** The Cobb 's angle was 21 degrees after 3days in the treatment with classic orthosis.

**C.** The Cobb 's angle was increased to 35 degrees after 1year in the treatment with classic orthosis.

**Table 1.** Summary of cases of group I

No.	Name	Sex	Age	level	Pre Brace	Post Brace	Reduction Angle	Correction Rate(%)	After 1 Year		
									Last Follow up	Reduction Angle	Correction Rate(%)
1	S.H.R.	F	11	T5-T12	30	4	26	86	0	30	100
2	L.H.R.	F	12	T4-T10	29	9	20	68	15	14	48
3	H.D.R.	F	13	T6-T11	24	10	14	58	4	20	83
4	K.D.J.	F	13	T4-T9	25	18	7	28	15	10	40
5	L.B.R.	F	13	T12-L4	40	16	24	60	17	13	32
6	A.J.H.	F	13	T6-T11	31	20	11	35	16	15	48
7	J.S.M.	F	13	T7-L2	17	1	16	94	0	17	100
8	J.E.H.	F	12	T12-L3	41	35	6	14	28	13	31
9	H.S.A.	F	11	T5-T10	34	15	19	55	25	9	26
10	K.D.J.	M	12	T6-T12	26	10	16	61	7	19	73
11	K.S.A.	F	12	T11-L3	27	0	27	100	9	18	66
12	L.A.R.	F	12	T4-T9	39	26	13	33	27	12	30
13	K.Y.J.	F	12	T12-L3	30	24	6	20	23	7	23
14	K.H.R.	F	13	T10-L3	26	3	23	88	5	21	80
15	N.D.W.	M	10	T4-T11	37	24	13	35	13	3	12
16	N.S.J.	F	13	T8-L2	28	12	16	57	18	10	35
17	H.E.Y.	F	13	T10-L4	40	17	23	57	18	12	30
18	K.H.S.	F	12	T5-T10	35	13	22	62	13	22	62
19	J.J.H.	F	10	T6-L1	36	18	18	50	20	16	44
20	P.E.M.	F	10	T7-L1	36	2	34	94	4	32	88
21	L.K.A.	F	11	T10-L3	23	1	22	95	3	20	87
Average				12	31.14	13.24	17.90	59.52	13.33	15.38	54.19

**Table 2.** Summary of cases of group II

No.	Name	Sex	Age	level	Pre Brace	Post Brace	Reduction Angle	Correction Rate(%)	After 1 Year		
									Last Follow up	Reduction Angle	Correction Rate(%)
1	K.K.A.	F	12	T12-L3	25	21	4	16	23	2	8
2	C.N.S.	F	13	T11-L3	20	16	4	20	18	2	10
3	H.J.T.	F	13	T4-12	30	28	2	6.7	26	4	13.3
4	L.M.A.	F	13	T6-11	35	30	5	6	32	3	8.5
5	P.E.Y	F	14	T6-11	36	33	3	8.3	34	2	5.5
6	P.K.S.	F	14	T10-L2	29	24	5	17.2	26	3	10.3
7	N.M.H.	F	12	T6-L1	28	21	7	25	22	3	10.7
8	A.D.S.	F	13	T6-12	26	23	3	11.5	22	4	15.3
9	K.M.M.	F	14	T12-L3	31	21	10	32.3	23	8	25.8
10	K.E.A.	F	13	T5-10	28	19	9	32.1	22	6	21.4
11	C.E.Y.	F	12	T7-L1	43	41	2	4.6	43	0	0
12	L.H.R.	M	11	T8-L2	25	23	2	8	22	3	13.1
13	L.J.A.	F	13	T6-11	34	30	4	11.8	30	4	11.7
14	H.E.S.	F	13	T4-9	31	26	5	16.1	27	4	11.8
15	J.Y.S.	M	14	T11-L3	31	25	6	19.4	27	4	12.9
16	J.E.Y.	F	13	T7-L2	31	21	10	32.3	23	8	25.8
17	L.E.A.	F	12	T4-T10	20	21	-1	-5	35	-14	-70
Average			13		29.59	24.88	4.71	15.43	26.76	2.71	7.89

principle) (3) total contact 가 .

(4) 가

15 . 9) 36

, Boston brace Boston

가 . 40% .

,

,

(

)

Bunnell 3)

1979 Drennen 8)

racic suspension orthosis . tho-

pelvic traction . halo- 가 .

group I

가 78% 54.1% .

. 1980 group II 7.8%

Bunnell 3) . 가

Cotrel

molding plastic jacket 가

70% . 3)

localizer

cast frame . , ,

strap . strap

가

가 .

## REFERENCES

- 1) **Blount WP, Schmidt AC, Keever ED and Leonard ET** : The Milwaukee brace in the operative treatment of scoliosis. *J Bone Joint Surg* 1958;40A:511-525.
- 2) **Labelle H and Dansereau J** : Orthotic Treatment of Pediatric Spinal Disorder and Diseases. (in Hsu JD eds. *Spine. Spinal Disorders in the Child and Adolescent*. Hanley &
- 3) **Bunnell WP, MacEwen GD and Jayakumar S** : The Use of Plastic Jacket in the Non-Operative Treatment of Idiopathic Scoliosis. Preliminary Report. *J Bone Joint Surg* 1980;62A:31-38.
- 4) **McCollough NC 3rd, Schultz M and Latta N** : Miami TLSO in the Management of Scoliosis: Preliminary results in 100 cases. *J Ped Orthop* 1981;1:141-152.
- 5) **Park J, Houtkin S, Grossman J and Levine DB** : A Modified Brace(Prenyl) for Scoliosis. *Clin Orthop* 1977;126:67-73.
- 6) **Winter R and Carlson M** : Modern Orthosis for Spinal Deformities. *Clin Orthop* 1977;126:74-86.
- 7) **Watts HG, Hall JE and Stanish WM** : The Boston Brace System for the Treatment of Low Thoracic and Lumbar Scoliosis by the Use of a Girdle without Superstructure. *Clin Orthop* 1977;126:87-92.
- 8) **Drennen JC, Renshaw TS and Curtis BH** : The Thoracic Suspension Orthosis. *Clin Orthop* 1979;139:33-39.
- 9) **Moon MS, Ok IY and Moon SY** : The Boston Brace in Adolescent Idiopathic Scoliosis. *J Kor Orthop Assoc* 1989;24:1605-1611.

