

# Inflammatory Metastatic Carcinoma of Sternum Mimicking Sternal Osteomyelitis with Gas Gangrene<sup>1</sup>

가스괴저를 동반한 흉골 골수염과 유사한 염증성 전이암

Ji Yung Choo, MD<sup>1</sup>, Bo-Kyung Je, MD<sup>1</sup>, Sung-Bum Kim, MD<sup>2</sup>, Ki Yeol Lee, MD<sup>1</sup>,  
Baek Hyun Kim, MD<sup>1</sup>

<sup>1</sup>Department of Radiology, Korea University College of Medicine, Ansan Hospital, Ansan, Korea

<sup>2</sup>Department of Internal Medicine, Dongshin Hospital, Seoul, Korea

Inflammatory metastasis is a metastatic tumor associated with fever, skin changes, soft tissue inflammation, and laboratory abnormalities, suggesting an inflammation that obscures the underlying malignancy. We report a 69-year-old male with inflammatory metastatic carcinoma of sternum. He presented with clinical findings mimicking osteomyelitis of the sternum. The chest CT scan showed the parasternal soft tissue masses and cortical disruption of sternum which was continuous with air bubbles spreading through the pectoralis muscles. He was diagnosed as poorly-differentiated carcinoma with unknown origin.

## Index terms

Sternum  
Bone Metastases  
Gas Gangrene  
Carcinoma, Squamous  
Multidetector Computed Tomography

Received October 24, 2012; Accepted March 6, 2013

Corresponding author: Bo-Kyung Je, MD  
Department of Radiology, Korea University College of  
Medicine, Ansan Hospital, 123 Jeokgeum-ro,  
Danwon-gu, Ansan 425-707, Korea.  
Tel. 82-31-412-5227 Fax. 82-31-412-5224  
E-mail: radje@korea.ac.kr

This is an Open Access article distributed under the terms  
of the Creative Commons Attribution Non-Commercial  
License (<http://creativecommons.org/licenses/by-nc/3.0>)  
which permits unrestricted non-commercial use, distri-  
bution, and reproduction in any medium, provided the  
original work is properly cited.

## INTRODUCTION

Anterior chest wall pain and swelling associated with inflammatory symptoms may be related to the inflammatory process such as infections and arthritis (1). Occasionally, an underlying pathologic process, such as malignancy, can be missed if the symptoms clearly implicate an infection. It can lead to catastrophic results for both the patient and the clinician. Here, we report an elderly male patient initially presenting as gas gangrene in the pectoralis major muscles and osteomyelitis of the sternum and finally diagnosed as metastatic carcinoma of unknown origin of the sternum.

## CASE REPORT

A 69-year-old man was admitted for evaluation of fever and

pain in his anterior chest wall. He had visited several orthopedic clinics for the anterior chest wall pain for 3 months, but the symptoms were not improved and progressing. On admission, his body temperature was 39.8°C. The pain was centered on the anterior chest wall, especially around the sternum. The soft tissue of the anterior chest wall was swollen, and the overlying skin was mildly erythematous with local heating sensation. On palpation, severe pain with crepitus was present. The remainder of the physical examination revealed only the left-sided hemiplegia due to a previous cerebral infarction occurred 10 years ago, and he had no history of diabetes.

A complete blood cell count showed a hemoglobin level of 13.0 g/dL, 21900/mm<sup>3</sup> leukocytes with 88% neutrophils and 4.4% lymphocytes, and a platelet count of 240000/mm<sup>3</sup>. The erythrocyte sedimentation rate (ESR) was 121 mm at the first hour, and the C-reactive protein (CRP) was 30 mg/L (normal < 0.7). The aspar-

tate transaminase was elevated at 98 IU/L (normal < 35 IU/L), but the alanine transaminase level was 39 IU/L (normal < 35 IU/L). The gamma glutamyl transpeptidase was 75 IU/L, within the normal range. The blood urea nitrogen and creatinine levels were within the normal range. The serum lactate dehydrogenase was elevated at 643 IU/L (normal < 450 IU/L). The serum total protein was 5.6 g/dL with a serum albumin of 2.2 g/dL. The serum alkaline phosphatase was 252 IU/L (normal < 126 IU/L). The serum creatine phosphokinase and myoglobin were both elevated at 309 (normal < 100 IU/dL) and 149.0 ng/mL (normal < 70 ng/mL), respectively. The blood culture was negative.

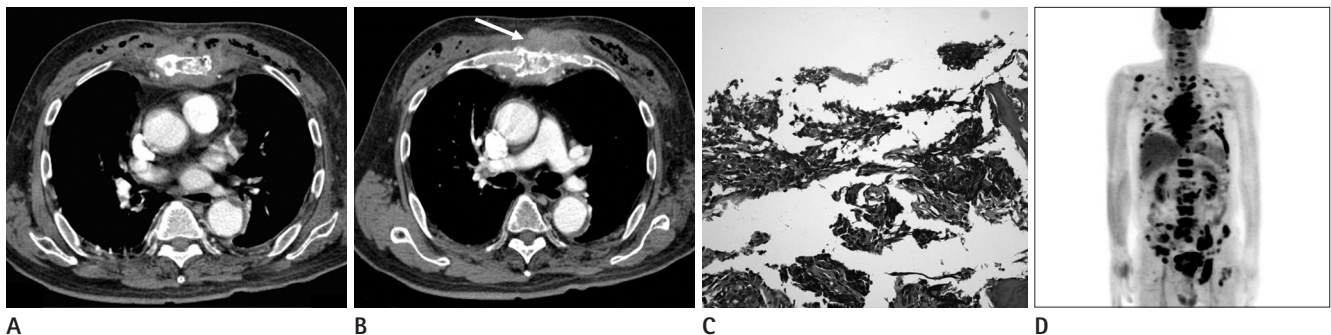
On the initial contrast-enhanced chest CT scan (Brilliance 64; Philips Medical Systems, Cleveland, OH, USA), there was a cortical disruption in the sternum, and air bubbles were also seen in the sternal marrow and retrosternal space. Gas was bilaterally spread throughout the pectoralis muscles to the axilla (Fig. 1A). The soft tissue surrounding the sternum was diffusely enhanced from the level of the 2nd costosternal junction to the 5th. Especially, at the level of the 3rd costosternal junction, lobular enhancing soft tissue masses were suspected anterior to the sternum (Fig. 1B). We suggested sternal osteomyelitis with gas gangrene. Additionally, the CT images demonstrated peripheral consolidation in both lower lobes and a minimal amount of bilateral pleural effusion, thought to be due to pneumonia. However, the whole lung evaluation using the lung window settings revealed no definable lung masses or nodules.

Fine needle aspirations for the pectoralis muscle and sternal

marrow were performed with Gram staining and both the aerobic and anaerobic culture. Empirical intravenous antibiotics were then initiated (ceftriaxone, clindamycin, and gentamicin). All Gram stains and cultures from the aspirates were negative. The polymerase chain reaction was negative for both tuberculosis and non-tuberculous mycobacteria. Fungal cultures were negative. Even after a 2 week-course of empirical antibiotics and analgesics, the soft tissue swelling on the anterior chest wall, especially around the sternum, did not regress. A follow-up CT scan was then obtained.

On the second contrast-enhanced CT scan, the previously observed extensive gas through the pectoralis muscles had resolved. However, the enhancement of soft tissue surrounding the sternum remained without change. An incisional biopsy for the patient's sternum and the suspicious soft tissue masses was performed. The histopathologic results were consistent with metastatic, poorly-differentiated carcinoma, most likely squamous cell carcinoma (Fig. 1C).

Then, the patient underwent a work-up looking for the primary malignancy. A whole body positron emission tomography (PET)-CT scan was performed and demonstrated multiple increased uptakes suggesting bone metastases to the axial skeleton, including the spine, rib, pelvis, and skull base, especially the clivus (Fig. 1D). Pelvic nodal metastases around the prostate were also revealed. In addition, brain MRI was performed to evaluate the skull base. A metastatic mass involved the clivus, but there was no evidence of a primary tumor in the nasopharynx.



**Fig. 1.** A 69-year-old man who suffered from fever and pain in his anterior chest wall.

**A.** Soft tissue surrounding sternum is enhanced. Sternal marrow cavity is also enhanced, and cortical disruption was evident. Gas was spread through the pectoralis muscles to the axilla, bilaterally. These findings are interpreted as sternal osteomyelitis with gas gangrene.

**B.** At the level of the 3rd costosternal junction, lobular shape, hyperdense, soft tissue masses are suspected anterior to the sternum (arrow), and infiltrated into the marrow cavity of the sternum and retrosternal space.

**C.** High power field ( $\times 400$ ) of the specimen from parasternal soft tissue contains poorly-differentiated carcinoma, most likely squamous cell carcinoma.

**D.** Whole body positron emission tomography-CT demonstrates multiple bone metastasis to the axial skeleton, including the spine, rib, pelvis, and skull base, as well as intra-abdominal nodal metastasis around the prostate.

Among the serum tumor markers, serum prostate specific antigen (PSA) was 17.33 ng/mL (normal < 4 ng/mL), but special staining of the specimens from the sternum and the surrounding soft tissue were all negative for PSA. Other tumor markers, including chorioembryonic antigen 19-1, were all within the normal range.

The patient refused prostate biopsy and any further evaluation. He also refused treatment except for pain control. The chest wall masses gradually enlarged, and his pain became multifocal. His condition declined, and he expired 2 months after the diagnosis due to multiple organ failure.

## DISCUSSION

When inflammatory skin changes are associated with malignancy, these conditions are named according to the malignancy, such as inflammatory cancer, inflammatory carcinoma, and inflammatory metastasis. In our patient, the soft tissue swelling and pain of the anterior chest wall and erythematous skin with local heating sensation were due to the sternal metastasis. Moreover, cortical disruptions of sternum resulted in gas spreading through the pectoralis muscles. We assumed this condition as inflammatory metastatic carcinoma of sternum. Bachmeyer et al. (1) also described this condition as 'inflammatory sternal metastasis' in their report of two patients with sternal metastasis from lung adenocarcinoma. The patients had fever above 38°C and elevated ESR and CRP level, similar to our case. There was another case of inflammatory sternal metastasis from a squamous cell carcinoma reported by Thongngarm et al. (2). They reported a 44-year-old woman who presented with pain in the upper sternum and costochondral junction. At first, the patient was diagnosed with Tietze's syndrome and was treated with the non-steroidal anti-inflammatory drugs. As palpable tenderness and mild swelling of the anterior chest wall developed, fine needle aspiration was performed. The pathology revealed squamous cell carcinoma of unknown origin. The different findings between the three previous cases (1, 2) and our case were the CT findings of air spreading through the pectoralis muscles. We first considered these lesions as gas gangrene associated with osteitis and osteomyelitis of sternum and costochondral junction. The possibility of a malignancy arose after the follow-up CT demonstrated no regression of the soft tissue enhancement despite

the resolution of the intramuscular gas.

An interesting finding in the current case is that the spontaneous gas gangrene was associated with a sternal metastasis, and this is the first such association to be reported to our knowledge. Usually, gas gangrene is caused by the clostridium species such as *Clostridium perfringens* or a polymicrobial infection and associated with a contaminated penetrating muscle injury. In our case, no microbe was isolated on culture, and there was no obvious wound to suggest a route of entry. Moreover, gas gangrene is a rapidly progressive and very fatal condition involving all the muscles, subcutaneous, and skin layers, and requires urgent surgical debridement (3, 4). Our patient, though, did not show the usual deteriorating clinical course of gas gangrene.

We attempted to find the primary malignancy. The sternum is not a common site for the involvement with malignancy regardless of primary or metastatic lesion. The common malignancies of the sternum are metastatic adenocarcinoma from the breast, thyroid, kidney, gastrointestinal tract, liver, lung, and rarely, the prostate (2, 5, 6). In our patient, the bone metastases were already too extensive, as was apparent on the PET-CT scan. The only positive tumor marker was the serum PSA, but the histopathology suggested squamous cell carcinoma, not adenocarcinoma. Considering that both the prostate and breast cancer can undergo squamous transformation, we performed the special staining for PSA on the sternal tissue, which turned out to be negative. Ultimately, we could not identify the primary site of the metastatic squamous carcinoma of sternum during the patient's life.

It is common and reasonable for physicians to consider a painful swelling of the anterior chest wall as a benign condition including infection, inflammatory arthritis, relapsing polychondritis, seronegative spondyloarthropathies, and crystalline-induced arthritis (2, 6, 7) and to develop the treatment plans accordingly. An inflammatory sternal metastasis is a rare condition reported in few reports. Here, we emphasize that the metastasis of the sternum and adjacent costochondral junction may present with inflammation. The definite diagnosis should also depend on the histopathological examination and bacteriologic studies.

## REFERENCES

1. Bachmeyer C, Langman B, Kazerouni F, Charoud A, Mougeot-Martin M. Inflammatory sternal metastasis heralding

- lung cancer: two cases. *Clin Rheumatol* 2006;25:409-411
2. Thongngarm T, Lemos LB, Lawhon N, Harisdangkul V. Malignant tumor with chest wall pain mimicking Tietze's syndrome. *Clin Rheumatol* 2001;20:276-278
  3. Mirza NN, McCloud JM, Cheetham MJ. Clostridium septicum sepsis and colorectal cancer - a reminder. *World J Surg Oncol* 2009;7:73
  4. Schaaf RE, Jacobs N, Kelvin FM, Gallis HA, Akwari O, Thompson WM. Clostridium septicum infection associated with colonic carcinoma and hematologic abnormality. *Radiology* 1980;137:625-627
  5. Cox SE, Cruz PD Jr. A spectrum of inflammatory metastasis to skin via lymphatics: three cases of carcinoma erysip-eloides. *J Am Acad Dermatol* 1994;30(2 Pt 2):304-307
  6. Toussiro E, Gallinet E, Augé B, Voillat L, Wendling D. Anterior chest wall malignancies. A review of ten cases. *Rev Rhum Engl Ed* 1998;65:397-405
  7. Jurik AG. Anterior chest wall involvement in seronegative arthritides. A study of the frequency of changes at radiography. *Rheumatol Int* 1992;12:7-11

## 가스괴저를 동반한 흉골 골수염과 유사한 염증성 전이암<sup>1</sup>

추지영<sup>1</sup> · 제보경<sup>1</sup> · 김성범<sup>2</sup> · 이기열<sup>1</sup> · 김백현<sup>1</sup>

염증성 전이암은 암세포의 전이가 있음에도 불구하고 임상적으로 열과 백혈구증가증, 연부조직 염증을 동반하는 감염성 질환처럼 나타나는 상태를 의미한다. 따라서 임상적으로 골수염이나 골염 등으로 오인되어 기저 악성질환을 불명료하게 만든다. 저자는 69세 남자 환자의 흉골에 발생한 염증성 전이암에 관한 임상적 경과와 전산화단층촬영 소견을 기술하고자 한다. 환자는 임상적으로 흉골의 골수염을 의심하게 하는 증상을 보였고 전산화단층촬영에서 대흉근을 따라 다량의 공기음영을 보이며 주변 연조직이 조영증강되었고 흉골의 골피질이 일부 파괴되는 소견을 보였다. 환자는 조직검사에서 원 발병소를 알 수 없는 분화도가 나쁜 암종으로 진단되었다.

<sup>1</sup>고려대학교 의과대학 안산병원 영상의학과, <sup>2</sup>동신병원 내과