

Xanthomatous Hypophysitis: A Case Report and Literature Review¹

Seok Jin Jang, M.D., Eui Jong Kim, M.D., Woo Seok Choi, M.D., Bong Jin Park, M.D.²

Xanthomatous hypophysitis is a rare inflammatory disorder of the pituitary gland of unknown prevalence that causes pituitary dysfunction and a mass-like lesion. The authors report a case of 40-year-old man with a visual disturbance and a confirmed diagnosis of xanthomatous hypophysitis.

Index words : Xanthomatosis, pituitary gland
Magnetic Resonance Imaging
Sella turcica

Hypophysitis, an inflammation of the pituitary gland, is clinically and radiologically important because it mimics tumor-like lesions in the sellar area and may produce mass effects. Xanthomatous hypophysitis is a type of primary hypophysitis with a very low prevalence.

In previously reported cases (1-3), patients with xanthomatous hypophysitis sometimes presented with a headache, sexual dysfunction, and/or diabetes insipidus. A pituitary lesion with cystic change is evident by imaging as well as the diminishment of testosterone, FSH (follicle-stimulating hormone), and LH (luteinizing hormone) levels.

The authors report a case of xanthomatous hypophysitis, which presented as an intrasellar cystic lesion, hypogonadism, and hyperprolactinemia. The report also includes a literature review.

Case Report

A 40-year-old man was admitted with a 2-month history of a gradually aggravated visual disturbance and a headache history of several years. There was no familial history of trauma or autoimmune disease. A physical exam revealed a limitation in the right lateral visual field with normal extraocular movements.

Initial laboratory testing revealed anterior pituitary dysfunction and a reduction in testosterone (<0.01 ng/mL), FSH (1.2 mIU/mL), and LH (0.3 mIU/mL) levels; hyperprolactinemia (36 ng/mL) was also reported (Table 1). Other laboratory findings were within normal ranges and electrocardiography (ECG) demonstrated a normal sinus rhythm.

An initial brain CT showed normal brain parenchyma, but a sellar mass was suspected. Magnetic resonance imaging (MRI) showed diffuse enlargement of the pituitary gland with a lobulated small cystic portion (about 9 × 13 mm in size) at the suprasellar region. The cystic portion was hyperintense based on T1- and T2-weighted images (Fig. 1), and was suspected to be lipid, a high protein content region, or hemorrhage (4). The enlarged gland was homogeneously enhanced (like normal pituitary gland tissue) and the adjacent meninges and

¹Department of Radiology, Kyung Hee Medical Center, College of Medicine, Kyung Hee University, Seoul, Korea

²Department of Neurosurgery, Kyung Hee Medical Center, College of Medicine, Kyung Hee University, Seoul, Korea

Received September 1, 2010 ; Accepted January 28, 2011

Address reprint requests to : Eui Jong Kim, M.D., Ph.D., Department of Radiology, Kyung Hee University Medical Center, 1 Heogi-dong, Dongdaemoon-gu, Seoul 130-702 Korea.

Tel. 82-2-958-8611 Fax. 82-2-968-0787 E-mail: euijkim@hanmail.net

showed no enhancement or thickening (Fig. 1). However, the pituitary stalk was mildly thickened. The right portion of the optic chiasm was compressed by the sellar lesion, especially by its cystic portion. The adjacent cavernous sinus and basal cistern showed no abnormal findings.

Table 1. Initial Clinical Features and Laboratory Findings

Pituitary Hormones	The Patient	Normal Range
Testosterone	<0.01	(1.80–8.96, ng/mL)
FSH	1.2	(2.9–8.2, mIU/mL)
LH	0.3	(1.8–5.2, mIU/mL)
Prolactin	36.2	(1.3–13, ng/mL)

Surgery was performed using a trans-sphenoidal approach. The pituitary gland was found to be enlarged and the cystic lesion was visualized. As the cystic portion was being resected, it leaked a yellowish fluid. The operation was completed, leaving the rest of the intrasellar lesion. Histologically, hematoxylin and eosin stained sections showed pituitary gland tissue with surrounding xanthoma cells and multinucleated giant cells containing cholesterol clefts. CD68 (DAP staining) was positive, confirming the presence of xanthoma cells. Furthermore, there was no evidence of a pituitary adenoma or craniopharyngioma (Fig. 2). After surgery, methylprednisolone was continuously administered on

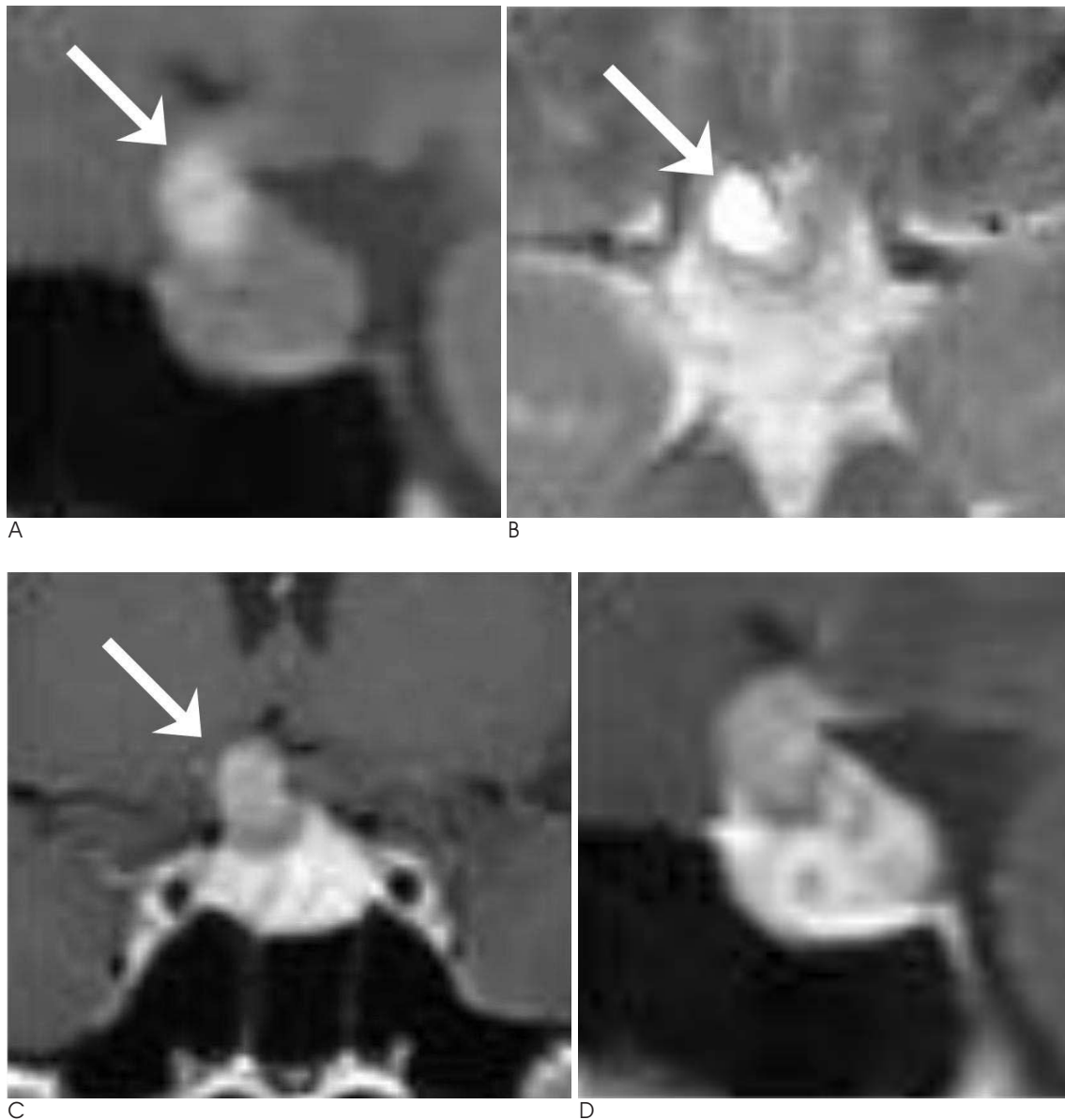


Fig. 1. A-D. T1-weighted sagittal (A) and T2-weighted axial (B) images showing diffuse enlargement of the pituitary gland and a cystic portion (arrow) at the suprasellar area with high signal intensity. Gd-enhanced T1-weighted coronal (C) and sagittal (D) images showing homogenous enhancement of an enlarged pituitary gland.

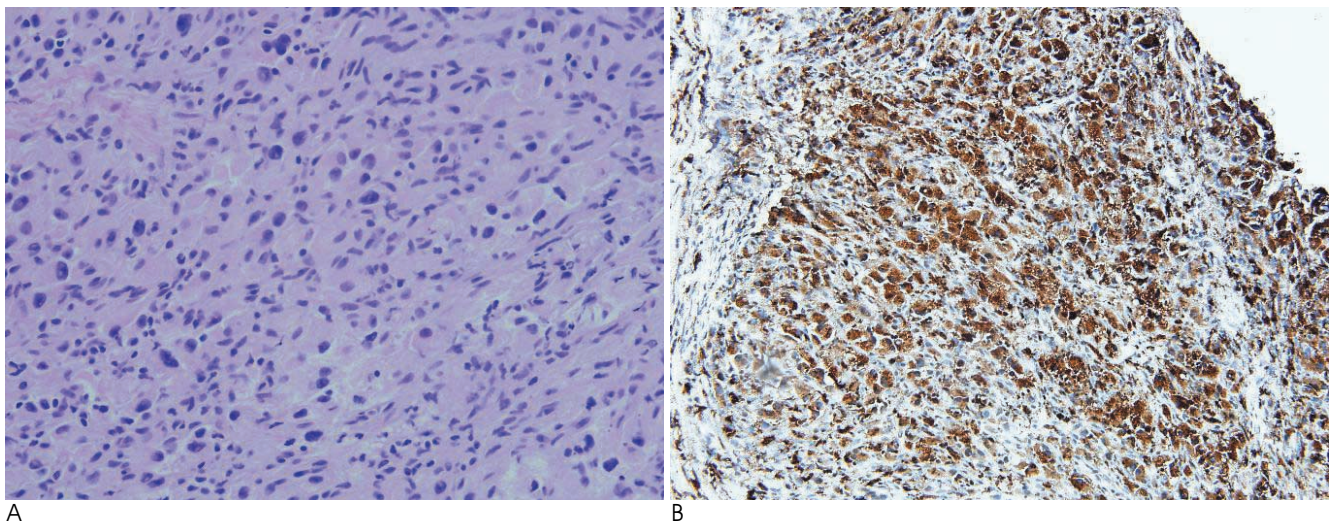


Fig. 2. A. Photomicrograph showing xanthoma and multinucleated giant cells (Original magnification $\times 400$).
B. Immunostaining for CD68 was positive, indicating the presence of xanthoma cells and confirming xanthomatous hypophysitis.

a daily basis. A week later after surgery, the visual disturbance had markedly improved, FSH was slightly increased (2.4 mIU/mL), and prolactin slightly decreased (22.9 ng/mL). However, testosterone levels were still depressed. The patient remains on desmopressin acetate therapy because of symptoms indicating diabetes insipidus development. A follow-up MRI performed 3 months after surgery demonstrated the removal of the cystic portion, but the gland enlargement and mild stalk thickening persisted (Fig. 1C).

Discussion

Hypophysitis is an inflammation of the pituitary gland by caused by a bacterial, viral, or fungal infection in an immunocompromised background. In addition, systemic disorders, such as sarcoidosis (5), Wegener's granulomatosis, Langerhans histiocytosis, Takayasu's disease, Crohn's disease, and Rosai-Dorfman syndrome (6), may account for secondary hypophysitis. Primary hypophysitis is classified as lymphocytic, granulomatous, or xanthomatous (2), based on its clinical and radiologic features (1, 2).

Lymphocytic hypophysitis predominantly occurs in female patients, has solid features, and consists of many lymphocytes and plasma cells microscopically. Patients with lymphocytic hypophysitis have ACTH deficiency, but diabetes insipidus is uncommon.

Granulomatous hypophysitis shows no sexual predilection, and has mixed cystic and solid imaging features. Unlike lymphocytic hypophysitis, diabetes in-

sidipus (DI) is common in granulomatous hypophysitis, and its prognosis is often fatal.

Xanthomatous hypophysitis, the least common type of primary hypophysitis, was determined to be a separate disease entity by Folkerth et al. in 1998 (3), who described its unique histological finding as a foamy histiocyte infiltration into the adenohypophysis. Small lymphocytes and liquefactive cyst formation are characteristic features of xanthomatous hypophysitis. In addition, the presence of multinucleated giant cells has been suggested to be a distinguishing feature of Xanthomatous hypophysitis.

Cheung et al. (2) reported a 32-year-old xanthomatous hypophysitis patient who presented with oligomenorrhea and hyperprolactinemia, 3 years after pregnancy, and also compared the lymphocytic and granulomatous appearance of xanthomatous hypophysitis. Most reports on the subject state that xanthomatous hypophysitis may have a more cystic appearance than other hypophysitis cases. Furthermore, cystic lesions were reported to contain a yellowish fluid, which was also evident with our case.

Xanthogranulomatous inflammations are sometimes referred to as cholesterol granulomas and are also found in the middle ear, mastoid, paranasal sinuses, and choroid plexus (7). Xanthoma cells are rarely found in primary or secondary pituitary diseases such as xanthomatous hypophysitis, xanthogranulomatous hypophysitis, or xanthogranuloma, in the sellar area or diseases such as Erdheim-Chester disease, adamantinomatous craniopharyngioma, or Rathke's cleft cyst. Paulus

et al. (7) compared 37 xanthogranulomatous lesions and 59 classical adamantinomatous craniopharyngioma lesions, and managed to differentiate the two using patient age, site, and prognosis. Xanthogranulomas in the sella area occur at a younger age, are limited to the sella, and have a better prognosis than craniopharyngioma.

Hypopituitarism is a characteristic finding in primary hypophysitis, which explains the common complaint of sexual dysfunction, and the greater awareness (due to greater prevalence) in lymphocytic hypophysitis than in the other two disease forms. It has been suggested that this anterior pituitary hormone insufficiency may be due to the inflammatory destruction of pituitary acinar cells (8). Adrenal deficiency and hypothyroidism are uncommon in xanthomatous hypophysitis. Posterior pituitary disorders, such as, prolactinemia, are considered to be caused by diffuse inflammatory infiltration rather than by compression of the stalk or posterior lobe of the pituitary gland.

In our case, the cystic lesion was hyperintense according to T1-weighted imaging. This finding is important but nonspecific because it is also present in pituitary adenomas, Rathke's cleft cysts, craniopharyngiomas, abscesses, mucocoeles, and dermoid cysts (4).

Furthermore, our patient presented with hypogonadism, hyperprolactinemia, and postoperative diabetes insipidus. Hypogonadism is a common finding in primary hypophysitis, and is present in all xanthomatous hypophysitis cases. Other pituitary lesions, including pituitary adenoma, do not appear to cause reductions in sex hormone levels. However, hyperprolactinemia, commonly seen in pituitary microadenoma, is an exception,

On the other hand, patients with all types of hypophysitis may have hyperprolactinemia, but it is not a common feature (<30%). Our patient's hyperprolactinemia persisted after operation, which was probably due to a xanthomatous type that was unresponsive to steroid therapy. Growth hormone deficiency is a common feature in xanthomatous hypophysitis, despite its absence in our case. In addition, our patient had a visual disturbance, which is unusual, and has not been previously reported in xanthomatous hypophysitis. On the other hand, visual disturbances are common in lymphocytic types. In our case, diabetes insipidus developed postop-

eratively. This is not in-line with 25~50% of xanthomatous cases reported, which had diabetes insipidus before surgery DI (9).

The recommended medical treatment for hypophysitis is glucocorticoids, but its effectiveness is often inadequate and patients may even be nonresponsive - especially due to xanthomatous lesions. Therefore, surgery is recommended and usually has a good prognosis. However, it is not effective in all xanthomatous patients. For example, hypogonadism and hyperprolactinemia were not improved in our case.

Xanthomatous hypophysitis is an uncommon pituitary disorder that presents with pituitary gland enlargement, hypogonadism, and hyperprolactinemia. If a cystic portion is depicted by MRI, and the pituitary gland is enlarged with accompanying symptoms of hypogonadism, and hyperprolactinemia xanthomatous hypophysitis, should be considered the first line differential diagnosis.

References

1. Burt MG, Morey AL, Turner JJ, Pell M, Sheehy JP, Ho KK. Xanthomatous pituitary lesions: a report of two cases and review of the literature. *Pituitary* 2003;6:161-168
2. Cheung CC, Ezzat S, Smyth HS, Asa SL. The spectrum and significance of primary hypophysitis. *J Clin Endocrinol Metabol* 2001;86:1048-1053
3. Folkerth RD, Price DL Jr, Schwartz M, Black PM, De Girolami U. Xanthomatous hypophysitis. *Am J Surg Pathol* 1998;22:736-741
4. Bonneville F, Cattin F, Marsot-Dupuch K, Dormont D, Bonneville JF, Chiras J. T1 Signal hyperintensity in the sellar region: spectrum of findings. *Radiographics* 2006;26:93-113
5. Bullmann C, Faust M, Hoffmann A, Heppner C, Jockenhovel F, Muller Wieland D, et al. Five cases with central diabetes insipidus and hypogonadism as first presentation of neurosarcoidosis. *Eur J Endocrinol* 2000;142:365-372
6. Kelly WF, Bradey N, Scoones D. Rosai-Dorfman disease presenting as a pituitary tumour. *Clin Endocrinol* 1999;50:133-137
7. Paulus W, Honegger J, Keyvani K, Fahlbusch R. Xanthogranuloma of the sellar region; a clinicopathological entity different from adamantinomatous craniopharyngioma. *Acta Neuropathol* 1999;97:377-382
8. Arafah BM, Nasrallah MP. Pituitary tumors: pathophysiology, clinical manifestations and management. *Endocr Relat Cancer* 2001;8:287-305
9. Gutenberg A, Hans V, Puchner MJ, Kreutzer J, Brück W, Caturegli P, et al. Primary hypophysitis: clinical-pathological correlations. *Eur J Endocrinol* 2006;155:101-107

황색종성 뇌하수체염: 증례보고와 문헌고찰¹

¹경희대학교 의과대학 영상의학교실

²경희대학교 의과대학 신경외과학교실

장석진 · 김의중 · 최우석 · 박봉진²

황색종성 뇌하수체염은 드물게 생기는 뇌하수체의 염증성 질환의 하나로서, 뇌하수체 종괴와 기능부전의 양상으로 나타난다. 특히 뇌하수체염의 여러 종류 중에서도 비교적 빈도가 낮게 나타나며 정확한 유병률은 알려지지 않았다. 본 저자는 40세 남자 환자로 시력장애를 주소로 발현한 황색종성 뇌하수체염을 경험하여 이를 보고하고자 한다.