

## Use of CT Angiography in a Country with Low Pulmonary Embolism Prevalence: Correlation with Clinical Pretest Probability and D-dimer Values<sup>1</sup>

Geewon Lee, M.D., Yeon Joo Jeong, M.D., Kun-Il Kim, M.D.<sup>2</sup>, Chang Won Kim, M.D.,  
Sung Woon Chung, M.D.<sup>3</sup>, Yeong Dae Kim, M.D.<sup>3</sup>, Jong Woon Song, M.D.<sup>4</sup>

**Purpose:** To assess the use of CT angiography (CTA) in the diagnostic evaluation of pulmonary thromboembolism (PE) in a country with low PE prevalence and correlate the diagnostic performance of CTA with the clinical pretest probability and D-dimer values.

**Materials and Methods:** The institutional review board approved this retrospective study. The observers reviewed all 660 CTAs and calculated the PE clot burden scores. The pretest probability of PE according to the Wells criteria and D-dimer values were calculated (clinical data were available for 371 of the 660 patients). We correlated the PE positivity rates of CTA and a PE clot burden score with the D-dimer values and pretest probability using Pearson's correlation coefficient.

**Results:** Of the 371 patients whose clinical data were available, 122 (32.8%) had PEs. None of the patients with both a normal D-dimer value and a low clinical probability had a PE. PE positivity rates of CTA were correlated with clinical pretest probability ( $r = 0.164$ ,  $p = 0.002$ ) and D-dimer values ( $r = 0.361$ ,  $p < 0.001$ ). PE clot burden scores were correlated with D-dimer values ( $r = 0.296$ ,  $p < 0.001$ ).

**Conclusion:** Although PE positivity rates of CTA in a country with low prevalence were higher than those in a country with a higher prevalence, approximately 30% of the yield still represents an overuse of CTA. CTA should be performed after the pretest probability has been assigned and if the result of a D-dimer assay is abnormal.

**Index words :** Angiography

Pulmonary Embolism

Tomography, X-Ray Computed

Fibrin Fibrinogen Degradation Products

Departments of <sup>1</sup>Radiology and <sup>2</sup>Cardiovascular and Thoracic Surgery, Pusan National University Hospital, Pusan National University School of Medicine and Medical Research Institute

<sup>3</sup>Department of Radiology, Pusan National University Yangsan Hospital, Pusan National University School of Medicine and Medical Research Institute

<sup>4</sup>Department of Radiology, Haeundae Paik Hospital, Inje University School of Medicine

All authors have no financial or other potential conflicts of interest to disclose.

Received November 16, 2010 ; Accepted March 2, 2011

Address reprint requests to : Yeon Joo Jeong, M.D., Department of Radiology, Pusan National University Hospital, 1-10, Ami-dong, Seo-gu, Pusan 602-739, Korea.

Tel. 82-51-240-7354 Fax. 82-51-244-7534 E-mail: jeongyj@pusan.ac.kr

Diagnostic tests for pulmonary thromboembolism (PE) include the D-dimer assay, ventilation-perfusion (V/Q) scintigraphy, lower limb ultrasonography, and CT angiography (CTA) (1). D-dimer tests have a high negative predictive value (94%) and sensitivity (97%) for PE (2). However, the reported poor specificity (29%) of D-dimer tests limits their role to exclude PE [2]. According to the original Prospective Investigation of Pulmonary Embolism Diagnosis (PIOPED) study, or PIOPED I, V/Q scintigram combined with clinical assessment established the diagnosis or exclusion of PE for only a minority of patients (3). The diagnostic value of adding lower limb compressive ultrasonography for deep venous thrombosis in patients who might have PE is limited (4).

CTA has demonstrated sensitivities of 53–100% and specificities of 83–100% (5). CTA also has many advantages- it provides fast and widely available examinations that can concurrently perform lower extremity venous imaging and provides information on intrathoracic structures, which is needed to examine other possible causes of thoracic symptoms (6). Hence, CTA is now the recommended initial imaging modality for PE diagnosis (7).

However, CTA has limitations including radiation exposure and an adverse reaction to intravenous contrast material (8). In addition, the increasing number of CTA studies performed to rule out PE increased medical costs (9–11).

Most of CTA studies have been performed in countries with a high PE prevalence, such as the United States and European countries (12, 13). Although the rate of CTA overuse for diagnosing PE in a country with low prevalence would be lower than the rate in a country with a high prevalence, to our knowledge, no study has measured CTA overuse in low prevalence countries. Therefore, we assessed the use of CTA for the diagnostic evaluation of acute PE in a country with low PE prevalence and correlated it with clinical pretest probability and D-dimer values.

## Materials and Methods

### *Patients and Clinical Evaluation*

Institutional review board approval was obtained to perform this retrospective study, and informed patient consent was waived.

This retrospective review included all 753 patients who underwent pulmonary CTA at a tertiary hospital in a country with a low PE prevalence from October 2004 through September 2008. Sixty patients were excluded

from the study because they had undergone repeated exams. Another 33 patients were also excluded: 25 whose images were nondiagnostic owing to poor contrast bolus timing, three whose images showed a motion artifact, two due to beam hardening artifacts, one due to a cement embolism, and finally two patients who had chronic PE. A serum D-dimer level was not mandatory to order the CT examination. Thus, 263 of the remaining 660 patients were excluded because D-dimer tests were not available or were performed more than seven days before or after CTA. Medical records were reviewed for all patients; clinical signs, symptoms, and comorbid conditions that are risk factors of PE according to the Wells criteria (14) were recorded (Table 1). The clinical data were not available in some cases, which resulted in the exclusion of an additional 26 patients.

The final study population included 371 patients (194 men, 177 women; mean age, 59.3 years) with both a Wells score as well as D-dimer values available, and who also underwent a subsequent analysis. A single observer who was blinded to the CTA results assigned a pretest probability score according to the Wells criteria and recorded the D-dimer results. D-dimer results were categorized as normal (0.0–0.5  $\mu\text{g/mL}$ ), intermediate (0.6–2.0  $\mu\text{g/mL}$ ), or abnormal ( $> 2.1 \mu\text{g/mL}$ ).

### *Image Acquisition and Analyses*

A CTA and indirect venography was performed with either a four-slice multidetector CT scanner (Lightspeed plus; GE Healthcare, Milwaukee, Wisconsin) or a 16-slice multidetector CT scanner (Sensation 16; Siemens, Forchheim, Germany). CT scans were performed in a caudocranial direction from the top of the diaphragm to the level of the aortic arch. Scans were acquired during either a single breath-hold or shallow breathing, depending on the ability of the patient to hold his or her

Table 1. Criteria for the Calculation of the Wells Score

Criteria	Value
Suspected deep vein thrombosis	3.0
Pulmonary embolism more likely than alternative diagnosis	3.0
Heart rate $> 100$ beats/minutes	1.5
Immobilization or surgery in previous 4 weeks	1.5
Previous pulmonary embolism or deep vein thrombosis	1.5
Hemoptysis	1.0
Cancer	1.0

Note.— Total score lower than 2 indicates a low probability for a pulmonary embolism; a score of 2–6 indicates a moderate probability for a pulmonary embolism; a score greater than 6 indicates a high probability for a pulmonary embolism.

breath during the acquisition time. Scans were obtained at 2.0-mm collimation and were reconstructed at 1.0-mm intervals using a standard algorithm.

Contrast material was administered through an 18-20 gauge catheter using an automated injector. A total volume of 120 mL of non-ionic contrast material (Ultravist 370; Schering Korea, Seoul, Korea) was injected at a rate of 3.0 mL/s. Scanning began when the contrast material was first seen in the pulmonary trunk using a bolus-tracking software (SmartPrep, GE Healthcare, Waukesha, Wisconsin, USA).

All contrast-enhanced CT image data were directly interfaced to a picture archiving and communications system (M-view; Marotec, Seoul, Korea) which displayed all image data on monitors (four monitors, 2,048 × 2,560 image matrices, 10-bit viewable gray scale, and 145.9-ft-lambert luminescence). On the monitors, mediastinal (window width, 350 Hounsfield units [HU]; window level, 50 HU) window images were reviewed to evaluate opacified vessels for PE.

Two chest radiologists with seven and 19 years' experience in chest radiology, respectively, and who were unaware of the D-dimer values and Wells score, independently reviewed the CT images. They interpreted the CTAs as positive or negative for PE. The criteria for a positive CTA result consisted of a partial occlusive thrombus (defined as an endoluminal filling defect surrounded by contrast medium) and a complete occlusive thrombus (15).

All patients were assigned a clot burden score derived from a simple equation based on a study by Qanadi et al. (16), multiplying the value of the thrombus location by a factor defined as the amount of thrombus. The pulmonary arterial tree was evaluated as separate segmental arteries; three to the upper lobes, two to the middle lobe and lingula, and five to the lower lobes, for a total of 10 segmental arteries. A clot in one of the segmental arteries was assigned a score of 1, and a clot in a proximal artery that gives rise to segmental arteries was assigned a score equal to the number of segmental arteries branched from it. For the amount of thrombus, a partial filling defect was assigned a weighting value of 1 and a complete filling defect was assigned a weighting factor of 2. Therefore, the clot burden score equaled a maximum of 40 (20 for each lung).

After performing CTA to diagnose PE, sufficient opacification of the venous system remained to evaluate the veins of the legs, pelvis, and abdomen for deep vein thrombosis (DVT).

## Statistical Analyses

Statistical analyses were performed using commercially available software (SPSS 15.0; SPSS, Chicago, IL, USA). We performed a correlation between PE positivity rates of CTA and PE clot burden scores with D-dimer values and the pretest probability using the Pearson correlation coefficient.

## Results

PE was diagnosed in 189 (28.7%) of 660 patients. Of the 660 patients, 193 patients had DVT, while 467 did not. Of the final study population (371 patients) with a Wells score and D-dimer values, 122 (32.8%) had a CTA that was positive for PE and 249 (67.2%) had a CTA that was negative for PE (Table 2). We performed an indirect venography showing that 103 patients were positive for DVT and that 268 patients were negative.

Of the 371 patients, 45 had a normal D-dimer value 95 had an intermediate value, and 231 had an abnormal value (Table 2). Among the 371 patients, only one patient (2%) with a normal D-dimer value and 10 patients (11%) with an intermediate D-dimer value had a PE. In the abnormal D-dimer value group, PE was diagnosed in 111 patients (48%) (Fig. 1) (Table 2).

Also, among the 371 patients tested for clinical pretest probability (low, intermediate, high), 112 were low, 235 were intermediate, and 24 had a high clinical pretest

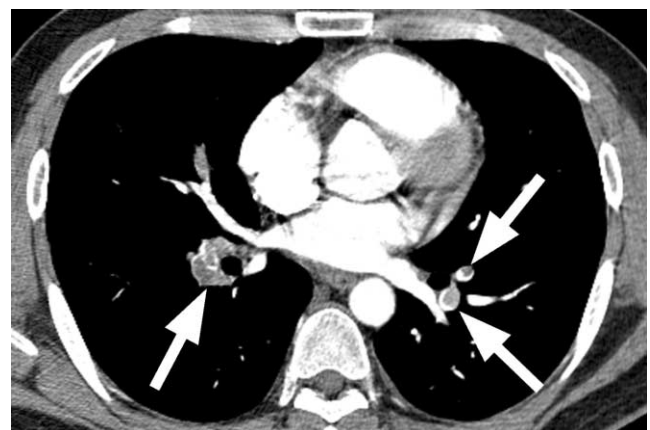


Fig. 1. Acute pulmonary thromboembolism in a 31-year-old man with a history of recent lower leg surgery. His serum D-dimer value was 3.44  $\mu\text{g/mL}$ , and he had an intermediate clinical probability of suffering a pulmonary thromboembolism. The pulmonary thromboembolism burden score was 20. The mediastinal window of a contrast-enhanced CT (2.0-mm section thickness) scan obtained at the level of the left inferior pulmonary vein shows multifocal filling defects (arrows) in the segmental arteries of both lungs.

probability (Table 2). For patients with low, intermediate, and high clinical pretest probability scores, 30 (27%), 78 (33%), and 14 (58%) patients, respectively, had positive results for PE on CTA (Table 2).

The only patient with a normal D-dimer value and an intermediate clinical pretest probability score had a PE (Fig. 2) (Table 2). None of the patients with both normal D-dimer values and a low clinical probability, had a PE (Table 2). PE positivity rates of CTA were correlated with clinical pretest probability ( $r = 0.164$ ,  $p = 0.002$ ) and D-dimer values ( $r = 0.361$ ,  $p < 0.001$ ) (Table 2). The

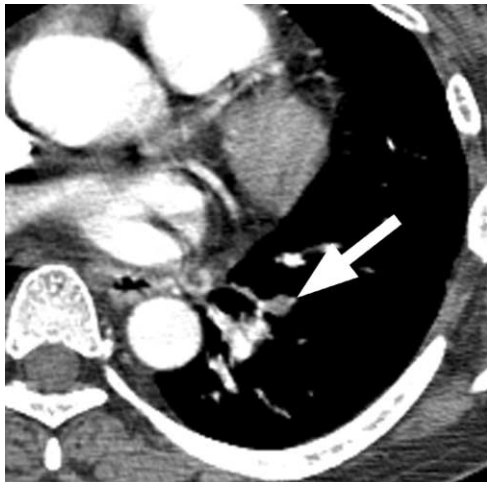


Fig. 2. Acute pulmonary thromboembolism in a 50-year-old woman with a history of systemic lupus erythematosus. Her serum D-dimer value was normal and she had an intermediate clinical pretest probability of suffering a pulmonary thromboembolism. The pulmonary thromboembolism clot burden score was 1. The mediastinal window of a contrast-enhanced CT (2.0-mm section thickness) scan obtained at the level of the left inferior pulmonary vein shows a filling defect (arrow) in a segmental artery of the left lower lobe.

mean PE clot burden score was 3.69 (range, 0–27). PE clot burden scores were correlated with D-dimer values ( $r = 0.296$ ,  $p < 0.001$ ) (Figs. 1, 2) (Tables 3, 4). However, the PE clot burden score was not correlated with the clinical pretest probability.

## Discussion

Acute PE is a relatively common and important cause of morbidity and mortality in the United States and Europe (12, 17, 18), but the incidence and mortality rates are lower in East Asian countries (19, 20). The reported number of new cases per year was 4,022 and the incidence was 32 patients per 1,000,000 people per year in one East Asian country, which is still much lower than that in the United States (21).

With the advent of helical CT, CTA has evolved into the new reference standard for diagnosis of PE and CTA is the first choice at many institutions for imaging diagnosis of PE. In routine clinical practice (22). Because of quite non-specific symptoms and signs of PE, CTA is indiscriminately ordered for every patient presenting with cardiothoracic signs and symptoms. This marked increase in the use of CTA seemed to be paired with a concomitant decrease in the overall positivity rate for PE in the scans obtained. A previous study had been performed in a country with a high PE prevalence and revealed that a PE positivity rate for CTA is 10%, which represents an overuse of CTA (22). Although our study revealed a higher PE positivity rate of 28.7%, we still concluded that CTA is overused, even in country with a low PE prevalence.

CTA can improve cost-effectiveness in the diagnostic

Table 2. Summary of D-Dimer, Clinical Probability, and CT Angiography Results

CT Angiography Result	D-Dimer Result			Total
	Normal	Intermediate	Abnormal	
High clinical probability				24 (6.5)
PE negative	1	2	7	10
PE positive	0	2	12	14
Intermediate clinical probability				235 (63.3)
PE negative	23	55	79	157
PE positive	1	4	73	78
Low clinical probability				112 (30.2)
PE negative	20	28	34	82
PE positive	0	4	26	30
Total	45 (12.1)	95 (25.6)	231 (62.3)	371
Total positive CT angiography	1 (2.2)	10 (10.6)	111 (48.0)	122 (32.8)

Note.— Values in parentheses are percentages. PE = pulmonary embolism. D-dimer results were categorized as normal (0–0.5  $\mu\text{g/mL}$ ), intermediate (0.6–2.0  $\mu\text{g/mL}$ ), or abnormal ( $> 2.1 \mu\text{g/mL}$ ).

Table 3. Summary of D-Dimer and Pulmonary Thromboembolism Burden Scores

PE Burden Score	D-dimer Result			Total
	Normal	Intermediate	Abnormal	
0	44	85	120	249 (67.1)
1-10	1	5	59	65 (17.5)
>10	0	5	52	57 (15.4)
Total	45 (12.1)	95 (25.6)	231 (62.3)	371

Note.— Values in parentheses are percentages. PE = pulmonary embolism. D-dimer results were categorized as normal (0–0.5  $\mu\text{g/mL}$ ), intermediate (0.6–2.0  $\mu\text{g/mL}$ ), or abnormal ( $> 2.1 \mu\text{g/mL}$ ).

Table 4. Summary of Clinical Probability and Pulmonary Thromboembolism Burden Scores

PE Burden Score	Clinical Probability			Total
	High	Intermediate	Low	
0	10	157	82	249 (67.1)
1-10	8	45	12	65 (17.5)
>10	6	33	18	57 (15.4)
Total	24 (6.5)	235 (63.3)	112 (30.2)	371

Note.— Values in parentheses are percentages. PE = pulmonary embolism. D-dimer results were categorized as normal (0–0.5  $\mu\text{g/mL}$ ), intermediate (0.6–2.0  $\mu\text{g/mL}$ ), or abnormal ( $> 2.1 \mu\text{g/mL}$ ).

work-up of suspected PE on the basis of the cost per life saved (10). However, helical CT alone is not cost-effective, but is when combined with D-dimer values and lower limb ultrasonography (9). Wells et al. (23) demonstrated that caring for patients with possible PE on the basis of pretest probability and D-dimer result is safe and decreases the need for diagnostic imaging. In our study, none of the patients with both normal D-dimer values and a low clinical probability had a PE. The only one patient with a normal D-dimer value and an intermediate clinical pretest probability score had a PE. Therefore, CTA would be performed carefully with consideration of clinical pretest probability and the result of a D-dimer assay.

In the present study, a moderate correlation was seen between PE clot burden scores and D-dimer values, in accordance with the study by Hochuli et al. (24) demonstrating that high D-dimer levels are associated with an increased prevalence of CT radiographic findings that indicate extended clinically severe PE.

There were several limitations in this study. First, many patients lacked a D-dimer value and were excluded from the analyses. This introduced a selection bias to our study. Second, the clinical probability score was calculated retrospectively by a single person rather than by the physician evaluating the patient according to Wells criteria. The Wells score includes subjective judgment of whether an alternative diagnosis is equally or less probable than PE, whereas the Geneva score is entirely

based on objective variables (14, 25). However, the two clinical probability scores have fair and similar predictive accuracies (26, 27). The recently introduced simplified Wells rule appears to be safe and clinically useful, although prospective validation remains necessary (28, 29).

In conclusion, although PE positivity rates diagnosed by CTA in a country with low PE prevalence were higher than the rates in a country with high PE prevalence, the approximately 30% yield still represents an overuse of CTA. None of the patients with both normal D-dimer values and a low clinical probability had PE in this study. Therefore, CTA should be performed after the pretest probability has been assigned and only if the result of a D-dimer assay is abnormal.

## References

1. Wittram C, Maher MM, Yoo AJ, Kalra MK, Shepard JA, McLoud TC. CT angiography of pulmonary embolism: diagnostic criteria and causes of misdiagnosis. *Radiographics* 2004;24:1219-1238
2. Quinn DA, Fogel RB, Smith CD, Laposata M, Taylor Thompson B, Johnson SM, et al. D-Dimers in the diagnosis of pulmonary embolism. *Am J Respir Crit Care Med* 1999;159:1445-1449
3. The PIOPED Investigators. Value of the ventilation/perfusion scan in acute pulmonary embolism. Results of the prospective investigation of pulmonary embolism diagnosis (PIOPED). *JAMA* 1990; 263:2753-2759
4. Turkstra F, Kuijter PM, van Beek EJ, Brandjes DP, ten Cate JW, Büller HR. Diagnostic utility of ultrasonography of leg veins in patients suspected of having pulmonary embolism. *Ann Intern Med* 1997;126:775-781

5. Rathbun SW, Raskob GE, Whitsett TL. Sensitivity and specificity of helical computed tomography in the diagnosis of pulmonary embolism: a systematic review. *Ann Intern Med* 2000;132:227-232
6. Shah AA, Davis SD, Gamsu G, Intriere L. Parenchymal and pleural findings in patients with and patients without acute pulmonary embolism detected at spiral CT. *Radiology* 1999;211:147-153
7. British thoracic society standards of care committee pulmonary embolism guideline development group. British thoracic society guidelines for the management of suspected acute pulmonary embolism. *Thorax* 2003;58:470-483
8. Schoepf UJ, Costello P. CT angiography for diagnosis of pulmonary embolism: state of the art. *Radiology* 2004;230:329-337
9. Perrier A, Nendaz MR, Sarasin FP, Howarth N, Bounameaux H. Cost-effectiveness analysis of diagnostic strategies for suspected pulmonary embolism including helical computed tomography. *Am J Respir Crit Care Med* 2003;167:39-44
10. van Erkel AR, van Rossum AB, Bloem JL, Kievit J, Pattynama PM. Spiral CT angiography for suspected pulmonary embolism: a cost-effectiveness analysis. *Radiology* 1996;201:29-36
11. Paterson DI, Schwartzman K. Strategies incorporating spiral CT for the diagnosis of acute pulmonary embolism: a cost-effectiveness analysis. *Chest* 2001;119:1791-1800
12. Giuntini C, Di Ricco G, Marini C, Melillo E, Palla A. Pulmonary embolism: epidemiology. *Chest* 1995;107:S3-S9
13. Oger E. Incidence of venous thromboembolism: a community-based study in Western France. EPI-GETBP Study Group. Groupe d'Etude de la Thrombose de Bretagne Occidentale. *Thromb Haemost* 2000;3:657-660
14. Wells PS, Ginsberg JS, Anderson DR, Kearon C, Gent M, Turpie AG, et al. Use of a clinical model for safe management of patients with suspected pulmonary embolism. *Ann Intern Med* 1998;129:997-1005
15. Riedel M. Diagnosing pulmonary embolism. *Postgrad Med J* 2004;80:309-319
16. Qanadli SD, El Hajjam M, Vieillard-Baron A, Joseph T, Mesurolle B, Oliva VL, et al. New CT index to quantify arterial obstruction in pulmonary embolism: comparison with angiographic index and echocardiography. *AJR Am J Roentgenol* 2001;176:1415-1420
17. Anderson FA Jr, Wheeler HB, Goldberg RJ, Hosmer DW, Patwardhan NA, Jovanovic B, et al. A population-based perspective of the hospital incidence and case-fatality rates of deep vein thrombosis and pulmonary embolism. The Worcester DVT Study. *Arch Intern Med* 1991;151:933-938
18. Konstantinides S. Clinical practice. Acute pulmonary embolism. *N Engl J Med* 2008;359:2804-2813
19. Lee S, Jeong H, In K, Yoo S, Kim S, Kim J, et al. Clinical characteristics of acute pulmonary thromboembolism in Korea. *Int J Cardiol* 2006; 108:84-88
20. Kumasaka N, Sakuma M, Shirato K. Incidence of pulmonary thromboembolism in Japan. *Jpn Circ J* 1999;63:439-441
21. Kitamukai O, Sakuma M, Takahashi T, Kagaya Y, Watanabe J, Shirato K. Incidence and characteristics of pulmonary thromboembolism in Japan 2000. *Intern Med* 2003;42:1090-1094
22. Costantino MM, Randall G, Gosselin M, Brandt M, Spinning K, Vegas CD. CT angiography in the evaluation of acute pulmonary embolus. *AJR Am J Roentgenol* 2008;191:471-474
23. Wells PS, Anderson DR, Rodger M, Stiell I, Dreyer JF, Barnes D, et al. Excluding pulmonary embolism at the bedside without diagnostic imaging: management of patients with suspected pulmonary embolism presenting to the emergency department by using a simple clinical model and D-dimer. *Ann Intern Med* 2001; 35:98-107
24. Hochuli M, Duiwell S, Frauchiger B. Quantitative D-dimer levels and the extent of venous thromboembolism in CT angiography and lower limb ultrasonography. *Vasa* 2007;36:267-274
25. Wicki J, Perneger TV, Junod AF, Bounameaux H, Perrier A. Assessing clinical probability of pulmonary embolism in the emergency ward: a simple score. *Arch Intern Med* 2001;161:92-97
26. Calisir C, Yavas US, Ozkan IR, Alatas F, Cevik A, Ergun N, et al. Performance of the Wells and Revised Geneva scores for predicting pulmonary embolism. *Eur J Emerg Med* 2009;16:49-52
27. Chagnon I, Bounameaux H, Aujesky D, Roy PM, Gourdier AL, Cornuz J, et al. Comparison of two clinical prediction rules and implicit assessment among patients with suspected pulmonary embolism. *Am J Med* 2002;113:269-275
28. Wells PS, Anderson DR, Rodger M, Ginsberg JS, Kearon C, Gent M, et al. Derivation of a simple clinical model to categorize patients probability of pulmonary embolism: increasing the models utility with the SimpliRED D-dimer. *Thromb Haemost* 2000;83: 416-420
29. Douma RA, Gibson NS, Gerdes VE, Büller HR, Wells PS, Perrier A, et al. Validity and clinical utility of the simplified Wells rule for assessing clinical probability for the exclusion of pulmonary embolism. *Thromb Haemost* 2009;101:197-200



## 폐색전증 빈도가 낮은 나라에서의 CT 혈관조영술: 임상예측확률과 D-dimer 값과의 상관 관계<sup>1</sup>

<sup>1</sup>부산대학교병원 영상의학과, <sup>3</sup>흉부외과

<sup>2</sup>양산부산대학교병원 영상의학과

<sup>4</sup>해운대백병원 영상의학과

이지원 · 정연주 · 김건일<sup>2</sup> · 김창원 · 정성운<sup>3</sup> · 김영대<sup>3</sup> · 송종운<sup>4</sup>

**목적:** 폐색전증의 빈도가 낮은 나라에서 급성 폐색전증을 진단하는 데 있어 CT 혈관조영술을 평가하고 임상예측확률과 D-dimer값과의 상관관계를 알아보기 위해 연구를 시행하였다.

**대상과 방법:** 2004년 10월에서 2008년 9월 사이에 3차 병원에서 시행된 총 660개의 CT 혈관조영술에서의 폐색전증을 검토하였다. 또한, 임상적 양상을 바탕으로 각 환자에서 Wells 기준에 따라 임상예측확률을 계산하였고 D-dimer 값을 조사하였다. CT 혈관조영술에서의 폐색전증 양성확률과 폐색전증 clot burden score를 D-dimer 값과 임상예측확률과의 상관관계를 조사하였다.

**결과:** 임상 정보가 있었던 371명의 환자 중에서 122명(32.8%)이 폐색전증으로 진단되었다. D-dimer 값이 정상이고 낮은 임상예측확률을 가진 환자 중 아무도 폐색전증을 가지고 있지 않았다. CT 혈관조영술의 폐색전증 양성확률은 임상예측확률( $r=0.164$ ,  $p=0.002$ )과 D-dimer 값( $r=0.361$ ,  $p < 0.001$ )과 상관관계가 있었다. 폐색전증 clot burden score는 D-dimer 값과 상관관계가 있었다( $r=0.296$ ,  $p < 0.001$ ).

**결론:** 폐색전증의 빈도가 낮은 나라에서 시행한 본 연구에서 비록 폐색전증 양성확률이 약 30%로 폐색전증의 빈도가 높은 나라에서보다 높았지만, 여전히 CT 혈관조영술이 과용되고 있는 것을 의미한다. 임상예측확률이 계산되고 D-dimer 값이 비정상적으로 나온 이후에 CT 혈관조영술을 시행해야 한다.