

Case Report

Perilesional Steatosis in Ectopic Pancreas Mimicking Exogastric Mass : A Case Report

Mi Yeon Nam¹, Mi Young Kim¹, Yeo Ju Kim¹, Chang Hae Suh¹, Suk Jin Choi², Jae Sung Cho³

¹Department of Radiology, Inha University Hospital, Incheon, Korea

²Department of Pathology, Inha University Hospital, Incheon, Korea

³Biology, New York University, USA

We report an unusual case of ectopic pancreas that appeared on radiologic images as a lobulated, submucosal mass enclosed by fat component in the gastric lower body. Although, ectopic pancreas including fat component is extremely rare, in the setting of gastric submucosal mass with containing perilesional fat, these findings should be considered in ectopic pancreas as part of the differential diagnosis.

Index words : Ectopic pancreas · Submucosal tumor · Stomach · Magnetic resonance image

INTRODUCTION

Ectopic pancreas is defined as pancreatic tissue lacking anatomic and vascular continuity with the main body of the gland (1). Pancreatic fatty infiltration-replacement is commonly diffuse involvement, most frequently seen in elderly or obese patients, and may be associated with diseases such as chronic pancreatitis and cystic fibrosis (2). Pathogenesis of fat replacement (also termed lipomatosis, adipose atrophy, or fat infiltration) of the exocrine pancreas is not well established. In our case, peripheral steatosis was detected in ectopic pancreas, and mimicked as exogastric mass. The radiographic features of this condition have not been described, to the author's knowledge, based on a computerized search of the literature. The clinical importance of this case is to demonstrate that this finding may not be misdiagnosed

as exogastric mass and highly suggesting feature for ectopic pancreas.

CASE REPORT

A 38-year-old man was admitted to our institute for evaluation of a known gastric mass. He was diagnosed it on endoscopy 2 years ago, and suffered from unintentional weight loss of 2 kg for 2 months. He had adult-onset diabetes mellitus for 3 years, which was controlled by medication. He had no history of hypertension, alcohol abuse, smoking and previous surgery. Physical examination was unremarkable. Laboratory examination revealed elevations in serum glucose 350 mg/dL (normal reference: 70–100 mg/dL), cholesterol 238 (normal reference: 238 mg/dL), and alanine transaminase (ALT) 55 IU/L (normal reference: 4–43 IU/L). Blood cell count, hemoglobin, total bilirubin, serum lipase, aspartate aminotransferase (AST), alkaline phosphatase (ALP), creatinine, and blood urea nitrogen (BUN) levels were within normal range.

Contrast-enhanced computed tomography (CT) demonstrated 2.5 cm sized, well-defined mass with peripheral fatty infiltration on the anterior wall of the

• Received; March 14, 2013 • Revised; May 13, 2013

• Accepted; May 13, 2013

Corresponding author : Mi Young Kim, M.D.

Department of Radiology, Inha University Hospital, 7-206, 3-ga, Shinheung-dong, Jung-gu, Incheon 400-711, Korea.

Tel. 82-32-890-2769, Fax. 82-32-890-2743

E-mail : mykim@inha.ac.kr

gastric lower body (Fig. 1a). The main pancreas showed normal contour and attenuation. MR images (Signa HDxt 1.5T, GE Healthcare, Milwaukee, WI) revealed a well-defined submucosal mass with smooth margins, enclosed by fat component. T2-weighted image (single shot fast spin echo sequence, TR/TE 1500/92.4 ms, flip angle 90°) demonstrated that high signal intensity margin enclose iso-signal intensity contour mass with pancreas (Fig. 1b). On T1-weighted 2D dual gradient echo (TR/TE 135/4.3 ms, flip angle 60°), inphased image (Fig. 1c) showed that hyperintense fatty infiltraion enclose iso intense lobulated

mass, and opposed phase (Fig. 1d) showed signal drop on margin of fatty lesion. Non-enhanced and contrast enhanced (Omniscan, GE Healthcare) fat suppressed T1-weighted images (TR/TE 4.7/2.1 ms, flip angle 12°) using the liver acquisition with volume acceleration (LAVA) sequence revealed enhancing ectopic pancreas and peripheral non-enhancing suppressed fatty component (Fig. 1e, f).

The patient underwent a gastric wedge resection including the tumor. The tumor was $5.5 \times 3.0 \times 3.0$ cm in size, covered by gastric mucosa, arising from the muscular layer and containing pancreatic tissue with

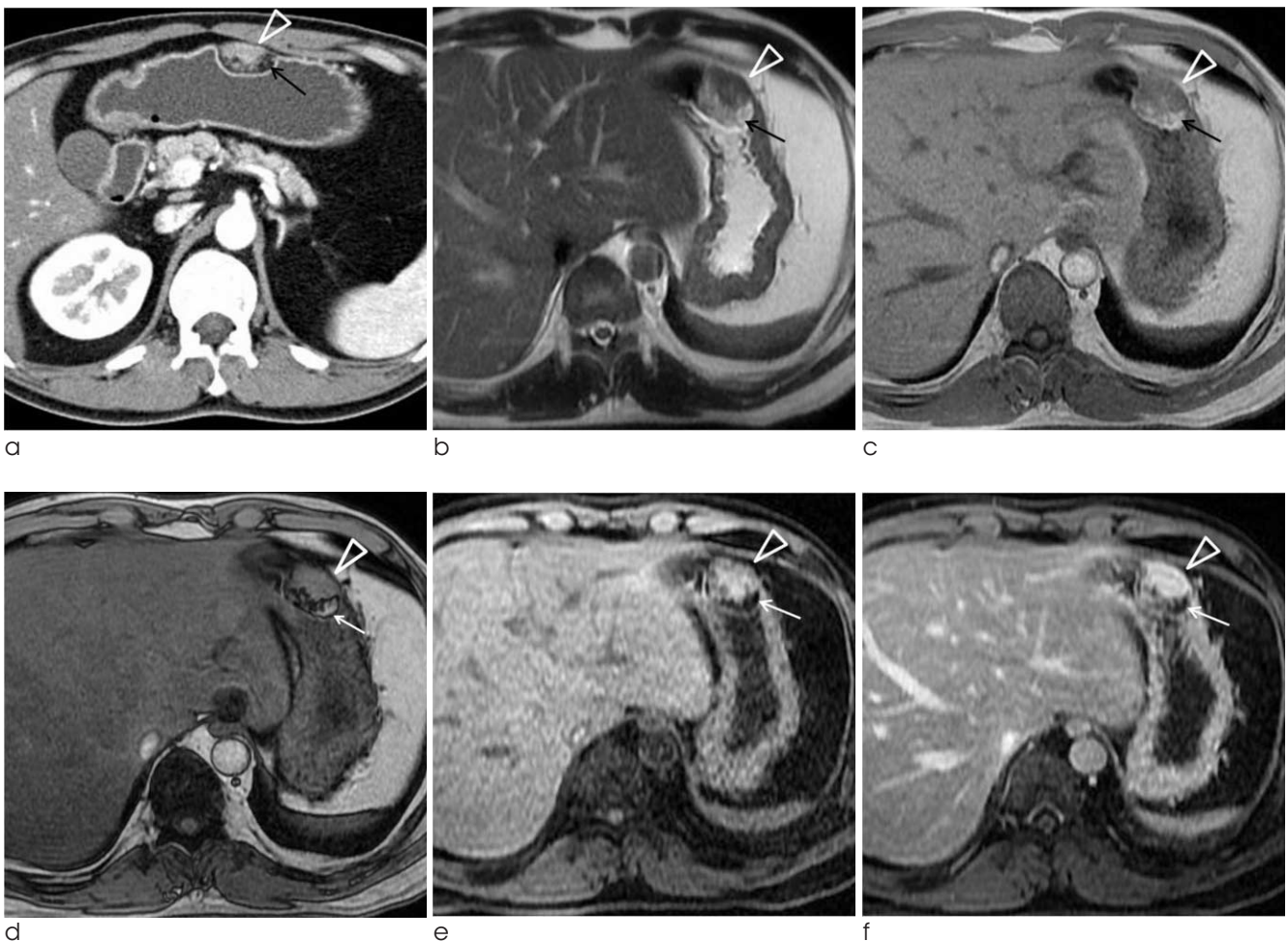


Fig. 1. 38-year-old man with ectopic pancreas in gastric lower body.

a. Axial CT scan shows a well-defined ovoid endoluminal submucosal mass (arrowhead) and perilesional fat replacement (arrow) in anterior wall of gastric lower body.

b. Axial T2-weighted MR image shows isointense mass (arrowhead) and peripheral hyperintense fatty tissue (arrow).

c, d. T1-weighted 2D dual gradient echo inphased image shows that hyperintense fatty infiltration enclose iso intense (arrowhead) lobulated mass with pancreas, as well as signal drop on opposed phase (arrow).

e, f. Axial fat suppressed T1-weighted MR image and contrast-enhanced T1-weighted MR image show hyperintense mass (arrowhead) with highly enhancement and peripheral saturated hypointense fatty contents (arrow).

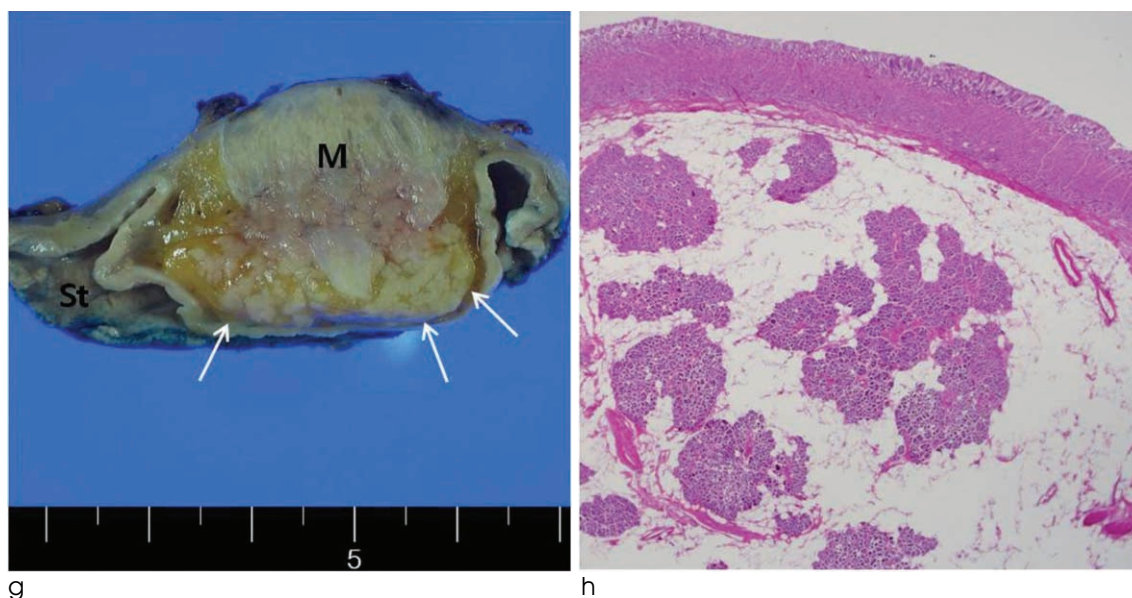


Fig. 1. g. Gross cut surface of the specimen shows a well-demarcated submucosal mass (M) surrounded by adipose tissue (arrows) and deeply buried within the muscularis propria.

h. On microscopic finding, the heterotopic pancreas lobules are composed of pancreatic acini and ducts within the muscular bundles and surrounded by adipose tissue (H & E stain, original magnification $\times 12.5$)

perilesional fat tissue (Fig. 1g). Histologic examination demonstrated ectopic pancreas (Fig. 1h). The postoperative course was uneventful, and he was discharged on postoperative 10 days.

DISCUSSION

Ectopic pancreas is a common developmental anomaly with a reported incidence of 0.55–14% at autopsy (1, 3, 4). They consist histologically of all pancreatic elements, including acini, islet cells, and ductal structures (2, 5, 6). Fatty replacement of pancreas may be uniform or may be unevenly distributed, and Langerhans are usually not affected by fatty replacement (4). No etiology has been established for fat replacement of the pancreas; however, several predisposing factors have been suggested: age, obesity, diabetes mellitus, chronic pancreatitis, hepatic disease, dietary deficiency, viral infection, steroid therapy, obstruction of the pancreatic duct, and fibrocystic disease (7, 8). Experimental and clinical studies have shown that fat replacement of the pancreas does result from ligation of the pancreatic duct or obstruction of the pancreatic duct by a tumor or a calculus.

We postulate that in our case, obesity and diabetes

mellitus were significant etiologic factors responsible (7, 8). Hepatic disease, chronic pancreatitis and adult-onset diabetes mellitus may have been contributory (7, 8). Although the pathophysiology was not well known, uniform fatty replacement of pancreas is the most frequent CT finding in adolescent and adult patients with cystic fibrosis, and pancreatic glandular tissue is significantly reduced in size (5, 7). Fatty lesion of pancreas is also detected in cases of lipomatous pseudohypertrophy, lipoma, liposarcoma, fibrolipoma, and teratoma (4). Endoscopy may be performed to differentiate an ectopic pancreas from neoplastic lesions. Ectopic pancreas can be developed into complications such as pancreatitis, pseudocyst, insulinoma, adenoma, and malignant transformation (1, 3). These complications cause clinical symptoms such as abdominal pain, gastrointestinal bleeding, and obstruction (1, 3). Surgical resection is required for symptomatic patients with ectopic pancreas that has atypical radiographic features.

Heterotopic pancreas in the stomach may easily be misinterpreted as other gastric submucosal tumor. According to previous study (3), CT findings were interpreted correctly as heterotopic pancreas in only two (17%) cases, and the remaining 10 (83%) cases were misinterpreted as leiomyoma in four, as carcinoid

tumor in three, as submucosal scirrhous carcinoma in two, and as lymphadenopathy in one (3). Although focal fatty infiltration of gastric submucosal tumor can be helpful for diagnosis of ectopic pancreas, the finding of perilesional steatosis can be detected in other tumors including lipoma, liposarcoma, angiolipoma, teratoma (9).

Prominent enhancement of the overlying mucosa, location, LD/SD ratio, growth pattern, and lesion border are statistically significant predictors in the differentiation of ectopic pancreas from GIST and leiomyoma (1). Glomus tumors appear as smooth submucosal masses with or without ulceration and may contain tiny flecks of calcification (10). These tumors frequently demonstrate strong enhancement on early-phase contrast enhanced images (10). Gastric schwannomas usually appear as discrete submucosal masses that are indistinguishable from other mesenchymal tumors (10). As they outgrow their blood supply, these lesions may undergo central necrosis and ulceration (11).

In conclusion, we report an unusual case of ectopic pancreas that appeared on radiologic images as a lobulated, submucosal mass enclosed by fat component in the gastric lower body. Although ectopic pancreas including fat component is extremely rare, in the setting of gastric submucosal mass with containing focal fat, these findings should be considered in

ectopic pancreas as part of the differential diagnosis.

References

1. Kim JY, Lee JM, Kim KW, et al. Ectopic pancreas: CT findings with emphasis on differentiation from small gastrointestinal stromal tumor and leiomyoma. *Radiology* 2009;252:292
2. Cho JS, Shin KS, Kwon ST, et al. Heterotopic pancreas in the stomach: CT findings. *Radiology* 2000;217:139-144
3. Katz DS, Hines J, Math KR, Nardi PM, Mindelzun RE, Lane MJ. Using CT to reveal fat-containing abnormalities of the pancreas. *AJR Am J Roentgenol* 1999;172:393-396
4. Low G, Panu A, Millo N, Leen E. Multimodality imaging of neoplastic and nonneoplastic solid lesions of the pancreas. *Radiographics* 2011;31:993-1015
5. Soyer P, Spelle L, Pelage JP, et al. Cystic fibrosis in adolescents and adults: fatty replacement of the pancreas--CT evaluation and functional correlation. *Radiology* 1999;210:611-615
6. Matsumoto S, Mori H, Miyake H, et al. Uneven fatty replacement of the pancreas: evaluation with CT. *Radiology* 1995;194:453-458
7. Kawamoto K, Yamada Y, Utsunomiya T, et al. Gastrointestinal submucosal tumors: evaluation with endoscopic US. *Radiology* 1997;205:733
8. Kilman WJ, Berk RN. The spectrum of radiographic features of aberrant pancreatic rests involving the stomach. *Radiology* 1977;123:291-296
9. Ferrozzi F, Tognini G, Marchesi G, Spaggiari E, Pavone P. Gastric tumors with fat components. CT findings and differential diagnosis. *Radiol Med* 2000;100:343-347
10. Park SH, Han JK, Kim TK, et al. Unusual gastric tumors: radiologic-pathologic correlation. *Radiographics* 1999;19:1435-1446
11. Patel S, Bellon EM, Haaga J, Park CH. Fat replacement of the exocrine pancreas. *AJR Am J Roentgenol* 1980;135:843-845

대한자기공명영상학회지 17: 154-157(2013)

주변부 지방침윤으로 인해 외위장 종괴로 보이는 이소성 췌장: 증례 보고

¹인하대학교병원 영상의학과

²인하대학교병원 병리과

³뉴욕대학교 생물학과

남미연¹ · 김미영¹ · 김여주¹ · 서창해¹ · 최석진² · 조재성³

저자들은 위의 하부 체부에 지방 성분으로 둘러싸여 있는 분엽성 형태의 점막하 종괴로 나타난 이소성 췌장의 1예를 경험하였다. 지방 성분을 포함한 이소성 췌장은 매우 드물지만, 이 증례를 바탕으로 병변 주위 지방 침윤을 보이는 위 점막하 종괴가 있을 때 이소성 췌장의 가능성을 감별해야 하므로 이를 보고하는 바이다.

통신저자 : 김미영, (400-711) 인천시 중구 신흥동 3가 7-206, 인하대학교병원 영상의학과
Tel. (032) 890-2769 Fax. (032) 890-2743 E-mail: mykim@inha.ac.kr