

14 , 2 , 2001 4

The Journal of the Korean Society of Fractures
Vol.14, No.2, April, 2001

- 1 -

• * • •

< >

Laugier fracture

가 , 가

가

•

•
•

1

.

1,2,9)

가 .

15

가,

가가 ,

9

:

388-1

Tel : (02) 3010-3530

Fax : (02) 488-7877

E-mail : Junoyoon@www.amc.seoul.kr

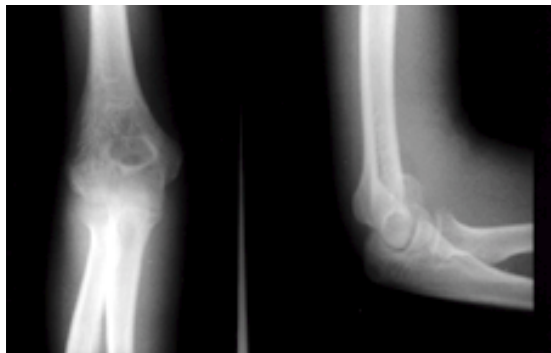
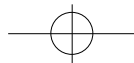


Fig 1. The displaced fracture was seen on a plain radiograph.

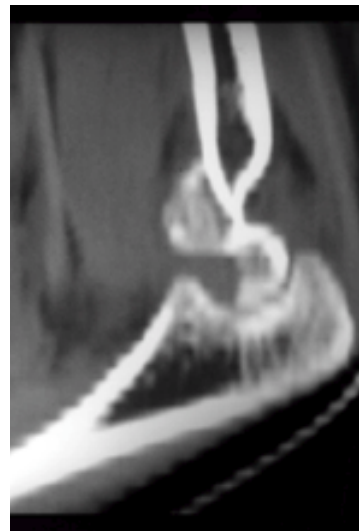
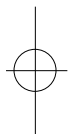


Fig 2. There was a isolated fracture of the trochlea that involved a half of trochlea and a part of capitellum.



(Figure 1),

가 (Figure 2).

(4.0 cannulated screw)

(Figure 3A, 3B),

4

5 , 가 125

1%

1853 Laugier

7),

1.6)

, 0.5-

Lindem

가 가

가
shear force
8),

screw pin

가 ,

가

4), Oppenheim
tangential force가

가

, 가

.

3),

5,7),
3)

5)

,

,



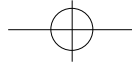


Fig 3A&3B. The fracture was reduced and fixed with a screw & a K-wire.

7,8),
가 ,
가

REFERENCES

- 1) **Foulk DA, Robertson PA, and Timmerman LA** : Fracture of the trochlea. *J Orthop Trauma*, 9:530-532, 1995.
- 2) **Grant IR and Miller JH** : Osteochondral fracture of the trochlea associated with fracture-dislocation of the elbow. *Injury*, 6:257-260, 1975.
- 3) **Grantham SA, Norris TR, and Bush DC** : Isolated Fracture of the Humeral Capitellum. *Clin Orthop*, 161:262-269, 1981.
- 4) **Inoue G and Horii E** : Combined Shear Fractures of the Trochlea and Capitellum Associated with Anterior Fracture-Dislocation of the Elbow. *J Orthop Trauma*, 6:373-375, 1992.
- 5) **Jupiter JB, Keith AB, Goodman LJ and Saldana AE** : Multiplane fracture of the distal humerus. *J Orthop Trauma*, 7:216-220, 1993.
- 6) **McKee MD, Jupiter JB, and Bamberger HB** : Coronal Shear Fractures of the Distal End of the Humerus. *J Bone Joint Surg*, 78-A:49-54, 1996.
- 7) **Mehdian H and McKee MD** : Fracture of Capitellum and Trochlea. *Orthop Clin North Am*, 31:115-127, 2000.
- 8) **Oppenheim W, Davlin LB, Leipzig JM, and Johnson EE** : Concomitant Fractures of the Capitellum and Trochlea. *J Orthop Trauma*, 3:260-262, 1989.
- 9) **Worrel RV** : Isolated, Displaced Fracture of the Trochlea. *New York State J Med*, : 2314-2315, 1971.



Abstract

Isolated trochlear fracture of the distal humerus - A case report -

Sogu Lew, M.D., Joon-O Yoon*, M.D., Soo-Sung Park, M.D.,
Eugene Kim, M.D., Seung-Jun Shin, M.D.

*Department of Orthopedic Surgery, Asan Medical Center,
College of Medicine, Ulsan University, Seoul, Korea*

The trochlear fracture of the distal humerus known as a Laugier fracture is extremely rare in occurrence because this articulating unit has no capsule, muscle, or ligamentous attachment and is cradled by the olecranon. Isolated, displaced fracture of the trochlea presented with review of the literature

Key Words : Elbow, Trochlear fracture

Address reprint requests to _____

Joon-O Yoon, M.D.

Department of Orthopedic Surgery, Asan Medical Center

388-1 Poongnap-dong, Songpa-gu, Seoul 138-736, Korea

Tel : +82.2-3010-3530

Fax : +82.2-488-7877

E-mail : Junoyoon@www.amc.seoul.kr