



13, 4, 2000 10

The Journal of the Korean Society of Fractures  
Vol.13, No.4, October, 2000

## Peterson 6 - 2 -

. . .

&lt; &gt;

Peterson  
가

6

가

2

Peterson

6

2

Peterson

6

.

: , , Peterson VI

Peterson 가

<sup>5)</sup>. Olmsted county study

0.2%

1

4 4

가

(6,7).

Peterson

(Fig. 1)

6

2

,

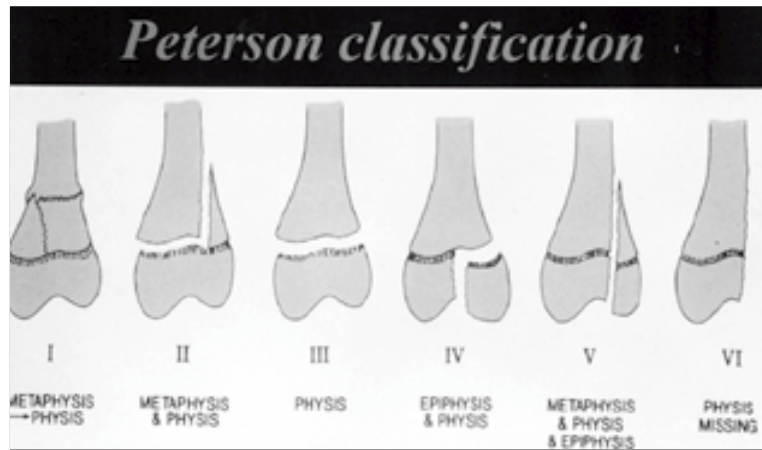
:

17

Tel : (02) 2290-8485

Fax : (02) 2299-3774





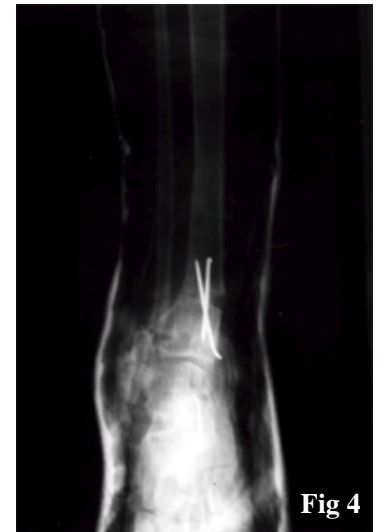
**Fig 1.** Classification of Peterson.



**Fig 2.** Because reduction is not accurate, second operative plain radiography show internal fixation with 2 K-wires after removal of 4 K-wires.



**Fig 3**



**Fig 4**

**Fig 3, 4.** Seven years after injury, last operative plain radiography show corrective osteotomy, internal fixation with 2 K-wires, epiphysiodesis of fibula and tibia(remained open physis).

Kirschner wires

4 2 7

2

19.  
(0.5 cm )

2 Kirschner wires  
(Fig. 2). 9

dorsi free flap

latissmus  
4 3

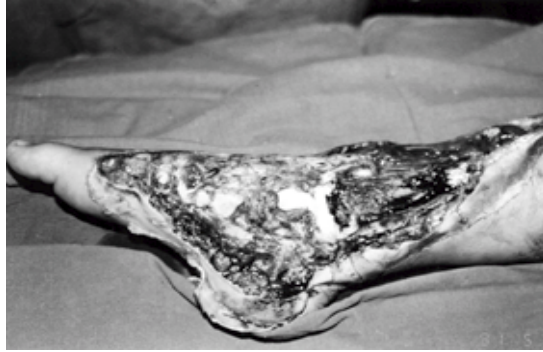
20.

14.

7

3

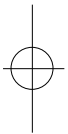
(Fig. 3,4).



**Fig 5.** Preoperative clinical photograph shows skin and soft tissue defect on ankle, missing of metaphysis, physis, epiphysis and posterior tibialis tendon.



**Fig 6.** Preoperative plain radiograph shows fracture of distal tibia and missing of a portion of metaphysis and epiphysis.



2

5 3

가

(Fig. 5,6).

3 Steinmann pin  
(Fig. 7). 11

25.

(Fig. 8,9).

3 6

latissmus dorsi free flap

6 9

propella blade

가  
9).

Salter - Harris 4

6  
- vehicle

. Peterson

Rang motor

8), Ogden

Peterson 6

1979

1988 Minnesota, Olmsted county

951 2 0.2%

6,7). Peterson

7

14.

(Fig. 10,

11).

가

가

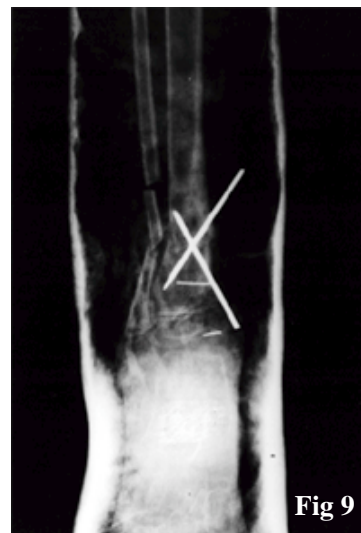
가



**Fig 7.** First post operative plain radiography shows open reduction and internal fixation with 3 Steinmann pins.



**Fig 8**



**Fig 9**

**Fig 8, 9.** Eleven months after injury, second operative plain radiography shows corrective osteotomy, double fibula osteotomy, resection of physeal bar, and internal fixation with 2 Steinmann pins, because of medial bridge formation, 25° varus angulation.



**Fig 10**



**Fig 11**

**Fig 10, 11.**

Eight years seven months after injury, last operative plain radiography shows corrective osteotomy, internal fixation with 5 hole small plate and 4 cortical screws, and epiphysiodesis of remained open physis, because of recurrent medial bridge formation, 140° varus angulation

, 가

1,3,4,6,7,9), Peterson 6

가

가

가

. Letts Millers

Peterson





6

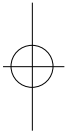
6

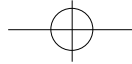
2).

가

## REFERENCES

- 1) **Bright, R.W.** : Physeal Injuries. In Rockwood, C.A. Jr., Wilkens, K.E., and King, R.E. (eds.): *Fractures in Children*, pp. 87-170. Philadelphia, *J.B. Lippincott*, 1991.
- 2) **Letts, R.M.** : Compression Injuries of the Growth Plate. In Uthoff, H.K., and Wiley, J.J. (eds.): *Behavior of the Growth Plate*, pp. 111-118. New York, *Raven Press*, 1988.
- 3) **Lombardo, S.J., and Harvey, J.P. Jr.** : Fractures of the Distal Femoral Epiphysis. Factors Influencing Prognosis: A Review of 34 Cases. *J. Bone Joint Surg.*, 59A:742-751, 1977.
- 4) **Ogden, J.A.** : Injury to the Growth Mechanisms. In *Skeletal Injury in the Child*, 2nd ed., pp. 97-174. Philadelphia, *W.B. Saunders*, 1990.
- 5) **Peterson, H.A.** : Physeal Fractures: Part 2, Two Previously Unclassified Types. *J. Pediatr. Orthop.*, 14:431-438, 1994.
- 6) **Peterson, H.A.** : Physeal Fractures: Part 3, Classification. *J. Pediatr. Orthop.*, 14:439- 448, 1994.
- 7) **Peterson, H.A., Madhok, R., Benson, J.T., Ilstrup, D.M., and Melton, L.J. III** : Physeal Fractures: Part I, Epidemiology in Olmsted County, Minnesota, 1979-1988. *J. Pediatr. Orthop.*, 41:423-430, 1994.
- 8) **Rang, M.** : Injuries of the Epiphyses, the Growth Plate, and the Periochondral Ring. In *Children's Fractures*, 2nd ed., pp. 10-25. Philadelphia, *J.B. Lippincott*, 1983.
- 9) **Salter, R.B., and Harris, W.R.** : Injuries Involving the Epiphyseal Plate. *J. Bone Joint Surg.*, 45A:587-622, 1963.





## Abstract

**Treatment of Peterson classification  
Type VI of Physeal Injury in Ankle Joint  
- 2 cases report -**

**Byung-il Lim, M.D., Tai-seung Kim, M.D.,  
Kuhn-sung Whang, M.D., IL-Hoon Sung, M.D.**

*Department of Orthopedic Surgery, Hanyang University College of Medicine*

Peterson classification type VI, which has been reported newly on physeal injury classification, is defined as partial missing of the metaphysis and epiphysis with a portion of the physis. It has not been reported in the Republic of Korea to our knowledge. Because this is an open fracture, immediate surgery is needed in all cases. Angular deformity and leg length discrepancy occurs as a result of the formation of the physeal bar. Additional reconstructive operation, therefore, should be necessary. We report two cases of Peterson classification type VI, both cases were open fracture at the level of ankle joint owing to pedestrian traffic accident. In our experience, Peterson classification type VI required multiple operations because progression of angular deformity with growth, and must be followed up until maturity.

**Key words :** Ankle joint, Physeal injury, Peterson classification VI