



13, 4, 2000 10

The Journal of the Korean Society of Fractures
Vol.13, No.4, October, 2000

-1 -

. .

가

< >

(Albers-Schönberg , ,)

가

, ,

가
가 35 .

1

: , , ,

Karshner(1921)

osteopetrosis

Albers-

35

6

10

Schönberg(1904)

2).

20

5

가

가

가

. 30

10).

6

1

1

가

. 2

:

4 357

가

Tel : (02) 480-2714

Fax : (02) 488-5259



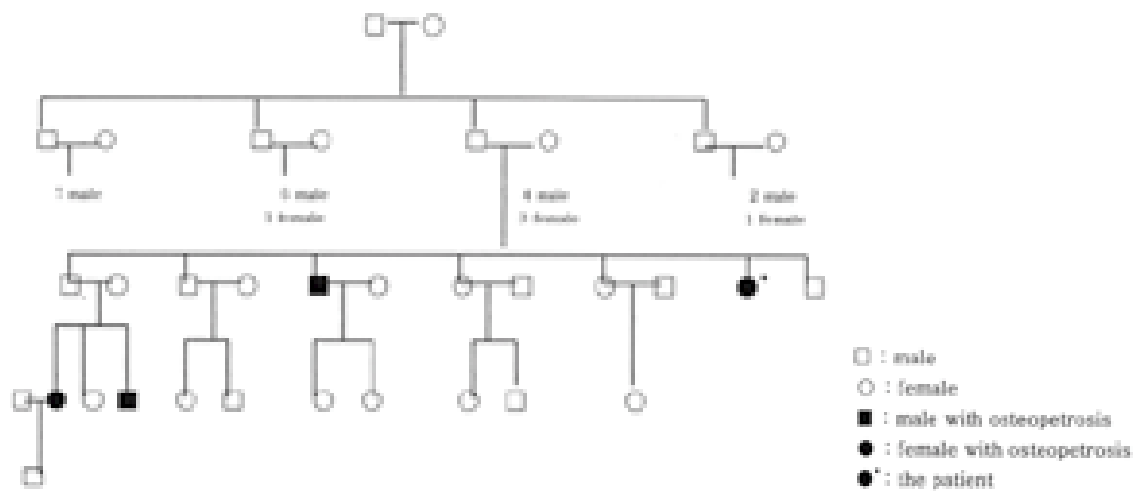
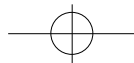


Fig 1. Family Pedigree

가 1

가

가

.가



Fig 2. Plain radiograph of the both hip shows subtrochanteric fractures of the both femurs.

(Fig.1).

가

가 가

가

(Fig.

2).

가

(Fig. 2, Fig.

(Fig. 3B).

6

6

(ischial weight bearing brace)

8

1 3

(Fig.3C).

3A).

가

가

Roe

(Roe's plate)



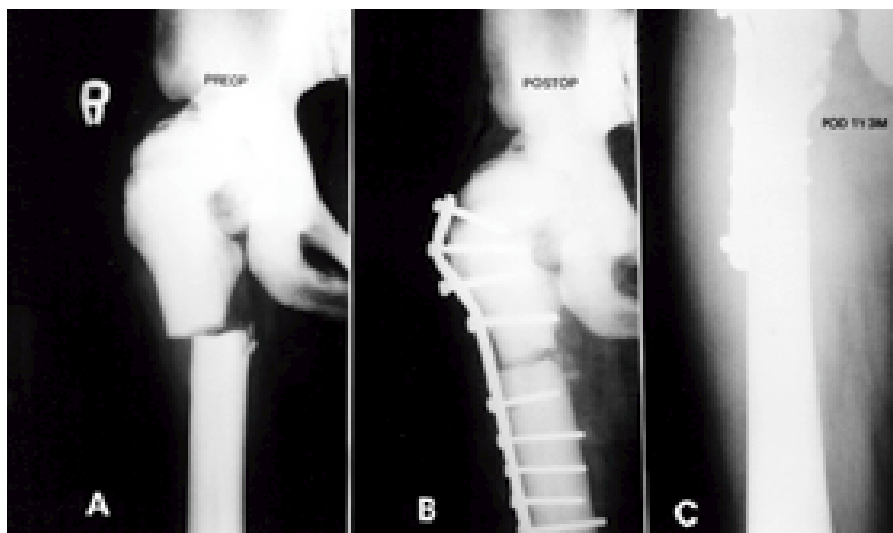
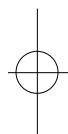


Fig 3. 35-year-old female

3A. Preoperative plain radiograph shows subtrochanteric fracture of right femur with obliteration of medullary canal and increased density.

3B. Postoperative plain radiograph shows the internal fixation with Roe 's plate for fracture.

3C. One year three months follow-up radiograph shows bone union at the fracture site.



foramina) (neural encroachment)

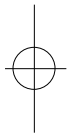
1926 Karshner Osteopetrosis 2) 1976 3) 가 20
osteopetrosis 3가
6) 가 7)
(intermediate form) 10 가
6) 가
1,25 - dihydroxy vitamin D3가 high-dose
8) (myelophthisic anemia), 7) HLA가 cyclophosphamide,
(thrombocytopenia), (hepatosplenomegaly), busulfan
(lymphadenopathy), (spontaneous HLA가
bruising), (neural 9)

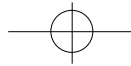




REFERENCES

- 가
- 5). (long bone)
5,7).
- 1). , ,
- . Kleinberg⁴⁾
- plate)
- Roe
- 가 가
- cortex)
- 가
- 가
- 가
- 1) **Howorth MB** : Textbook of Orthopaedics, Philadelphia W B Saunders Co.; 404-408, 1952.
 - 2) **Enticknap JB** : Albers-Schonberg disease(marble bones). Report of a case with a study of the chemical and physical characteristics of the bone. *J Bone Joint Surg*, 36-B: 123-131,1954.
 - 3) **Kim ID, Lee SY, Ihn JC, and Paik YH** : A familial osteopetrosis. *J of Korean Orthop Association*. 11-3 : 483-488, 1976.
 - 4) **Kleinberg S** : Osteopetrosis. *Am J Surg*, 87:50-62, 1954.
 - 5) **Milgram JW and Jasty M** : Osteopetrosis. *J Bone JointSurg*, 64-A;912-929,1982.
 - 6) **Morrissy RT and Weinstein SL** : Lovell and Winter 's Pediatric Orthopedics. 4th ed, *Lippincott Raven Co.*; 172, 1996.
 - 7) **Shapiro F** : Osteopetrosis: current clinical considerations. *Clin Orthop*, 294: 34-44, 1993.
 - 8) **Shapiro F, Glimcher MJ, Holtrop ME, et al.**: Human osteopetrosis. A histological, ultrastructural, and biochemical study. *J Bone Joint Surg*, 62A:384-399,1980.
 - 9) **Sieff CA, Levinsky RJ, Rogers DW, et al.**: Allogeneic bone-marrow transplantation in infantile malignant osteopetrosis. *Lancet*, 1:437-441,1983.
 - 10) **Weinstein SL and Buckwalter JA** : Turek 's Orthopedics. 5th ed, *J B Lippincott.*; 370, 1994.





Abstract

Osteopetrosis combined with Subtrochanteric Fracture of Femur -A Case Report-

Ok-Gyun An, M.D., Jong-Ho Jang, M.D., and Young-Kyu Lim, M.D.

Department of Orthopaedic Surgery, Kangdong Catholic General Hospital, Seoul, Korea

Osteopetrosis (Albers-Schönberg's disease, Marble bones, and chalk bones) is a rare genetic disorder in which the bony structure throughout the body becomes dense and brittle. Because of the fragility of the pathologic bone, fractures are common and insufficient development of the bone marrow, optic atrophy, deafness, and facial paralysis can be developed to complications. We report a case of 35-year-old female with the autosomal dominant form of osteopetrosis combined with subtrochanteric fracture of femur that underwent surgical treatment.

Key words : Femur, subtrochanteric fracture, osteopetrosis, surgical treatment.

Address reprint requests to _____

Ok-Gyun An

Department of Orthopaedic Surgery, Kangdong Catholic Hospital,

Cheonho-4 dong, Seoul, Korea

Tel : (02) 480-2714

Fax : (02) 488-5259