



13, 3, 2000 7

The Journal of the Korean Society of Fractures  
Vol.13, No.3, July, 2000

· · ·  
· · ·

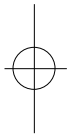
&lt; &gt;

가

가

1

: , , ,



20

151cm,

50kg

17

Tanner

5

,

.

가

Fielding

2

, Seinshimer

II-A

가

.

(brittle)

.

(Fig 1-

1

A,B,C).

,

(Fig 2-A,B)

.

(Fig 3)

:

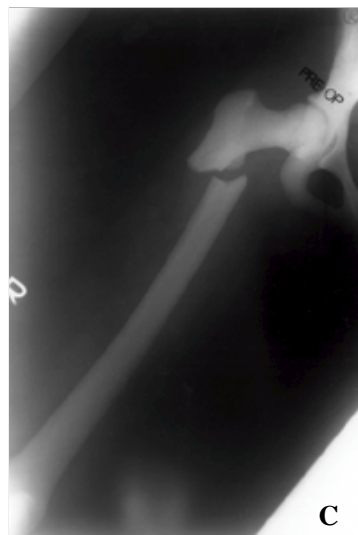
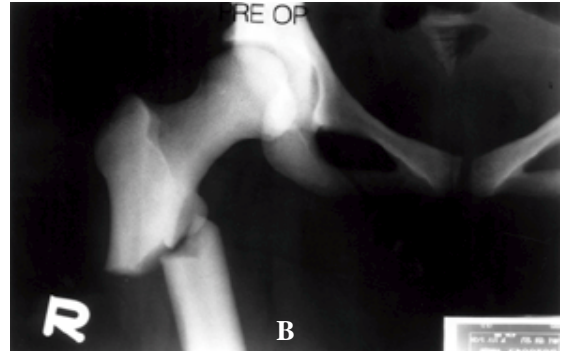
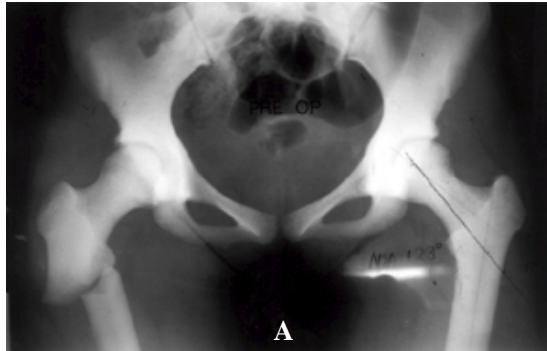
7 761-1

(139-707)

TEL : (02) 950 - 1032

FAX : (02) 934 - 6342



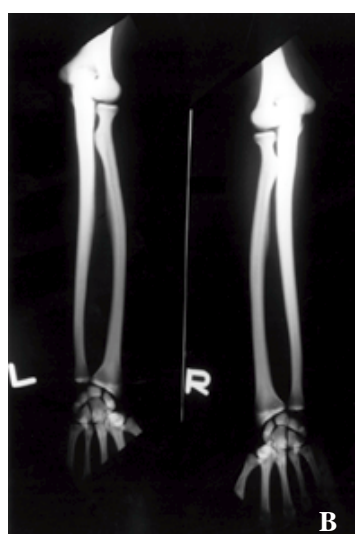
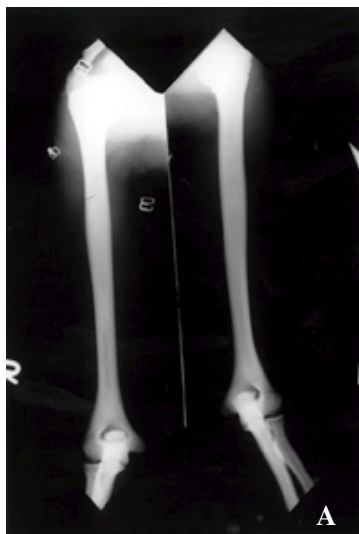


**Fig 1A, B, C.**

Subtrochanteric fracture of right femur occurred after falling.

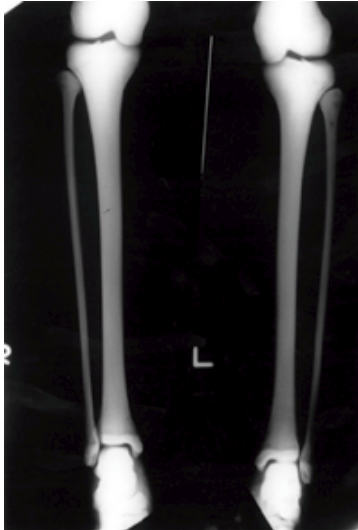
The fracture is classified to Fielding class II, Seinsheimer class II-A.

Besides, severe osteosclerosis and obliteration of medullary canal of femur is seen.

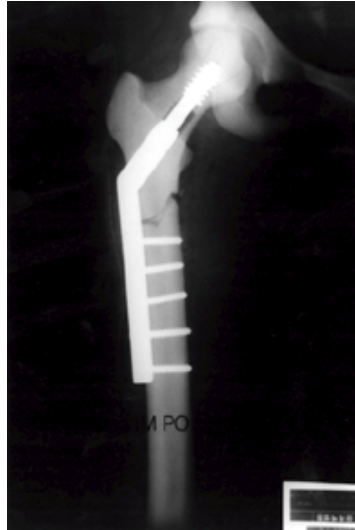


**Fig 2-A, B,.**

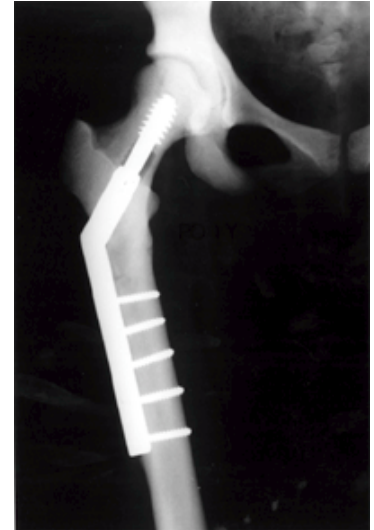
Severe osteosclerosis and obliteration of medullary canal is also seen on both humerus, radius and ulna.



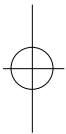
**Fig 3.** Uniform Osteosclerosis and obliteration of medullary canal is seen in both tibia and fibula.



**Fig 4.** Open reduction was done on the subtrochanteric fracture and internally fixed with compression hip screw.



**Fig 5.** Solid union is seen on x-ray taken at 1 year after operation



가  
0.3IU  
1327mg/cm,  
143%, 181%,  
181%  
가  
(Fig. 4) 1  
(Fig 5).

1904 Albers-Schonberg<sup>1)</sup>가





가

8),

가

가

8)

가

가

가

가

3)

3),

6)

가

가

7,9),

2)

가

5cm

5mm

가

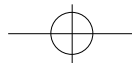
1

가

1

## REFERENCES

- 1) **Albers-Sconberg H** : Roentgenbilder einer selten Knochenkrankung. *Muenchener Med. Wschr.* 51: 365-368, 1904.
- 2) **Breck LW, Cornell RC, Emmett JE** : Intramedullary fixation of fractures of the femur in a case of osteopetrosis. *J Bone Joint Surg.* 39-A: 1389-1394, 1957.
- 3) **King RE, Lovejoy JF Jr.** : Familial osteopetrosis with coxa vara. *J Bone Joint Surg.* 55-A: 381-385, 1973.
- 4) **Kleinberg S** Osteopetrosis. *Am J Surg.* 87: 50-62, 1954.
- 5) **Marks SC Jr.** : Congenital osteopetrotic mutations as probes of the origin, structure and function of osteoclasts. *Clin. Orthop.* 189: 239-243, 1984.
- 5) **Mc Kusick VA** : Heritable disorders of connective tissue. 3rd ed, *St Louis CV Mosby*: 145-151, 1972.
- 6) **Mitchell DC** : Fractures in brittle bone diseases. *Orthop Clin North Am*, 3: 787-792, 1972.
- 7) **Milgram JW, Jasty M** : Osteopetrosis : A morphological study of twenty-One cases. *J. Bone Joint Surg.* 64-A: 912-929, 1982.
- 8) **Pirie AH** : Marble bones. *Am Jour Raiology*, 30: 618-620, 1933.
- 9) **Shapiro F** : Osteopetrosis current clinical consideration. *Clin Orthop*, 294: 34-44, 1993.



## Abstract

**Subtrochanteric Fracture in Osteopetrosis**

**Yerl-Bo Sung, M.D., Kook-Jin Chung, M.D., Sung-Wook Won, M.D.,  
Jin-Ho Kim, M.D., Hyung-Jin Chung, M.D., Jae-Kwang Hwang, M.D.,  
Jae-Kwang Yum, M.D. and Jong-Guk Ahn, M.D.**

*Derpartment of Orthopedic Surgery, Sang-Gye Paik Hospital  
Inje University College of Medicine, Seoul, Korea*

Osteopetrosis is a rare inheritable skeletal disorder caused by a defective remodeling mechanism. The resultant bone of these children is dense, brittle and susceptible to fracture. We report a case of the subtrochanteric fracutre in osteopetrosis.

**Key Words** : Femur, Subtrochanteric, Fracture, Osteopetrosis