



12, 2, 1999 4

The Journal of the Korean Society of Fractures
Vol.12, No.2, April, 1999

-2 -

. . .

= Abstract =

Arthroscopic Treatment of Isolated Anterior Malleolar Fracture of the Ankle

Dong-Wha Lee, M.D., Kyoo-Seog Shin, M.D., Jong-Soon Kim, M.D.
and Yong-Whee Kim, M.D.

Department of Orthopedic surgery, Bongseng Memorial Hospital, Pusan, Korea

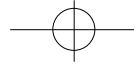
Isolated fractures of the anterior malleolus of the ankle are uncommon. They most often result from vertical loading or from posterior displacement of the tibia on a planted foot. Fracture of the tibial plafond with a large anterior tibial (anterior malleolus) fragment may require open reduction with internal fixation. Anatomic reduction of the articular surface can be ensured by visualizing the articular surface using an arthroscope during reduction. Two cases wherein this technique has proven effective were described.

Key Words : Ankle, Anterior malleolar fracture, Arthroscopic treatment

:

68-11 (601-051)

Tel : (051) 640 - 4620 Fax : 631 - 8054



motorized shaver

K-
K-

K-

가
가

K-

K-

가

K-

K-

2

1

21

가 3.5m

가

Kelex

loop

Yates-Grana

5). 2.7mm

32%
25%

(Fig. 1A, B).

3

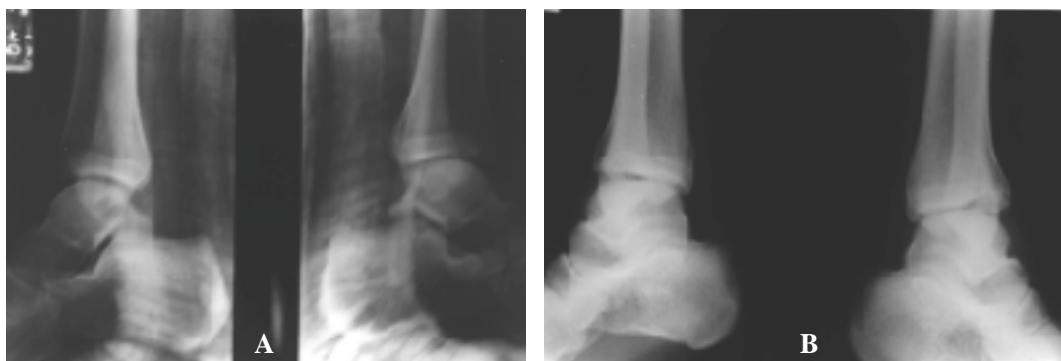


Fig 1-A,B. Preoperative both ankle lateral and oblique roentgenogram show displaced fracture that involve more than 25% of articular surface of the both ankle.

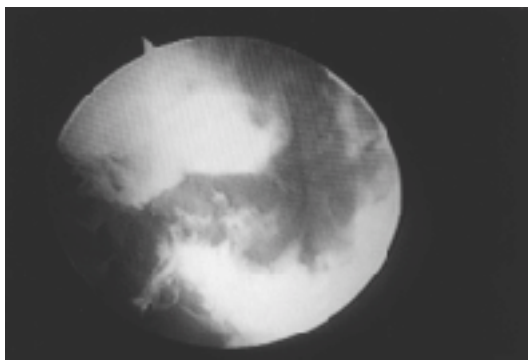


Fig 2. Arthroscopic findings of left ankle joint show crushed articular cartilage, cartilage loose body, exposure of subchondral bone and displaced intraarticular fracture.

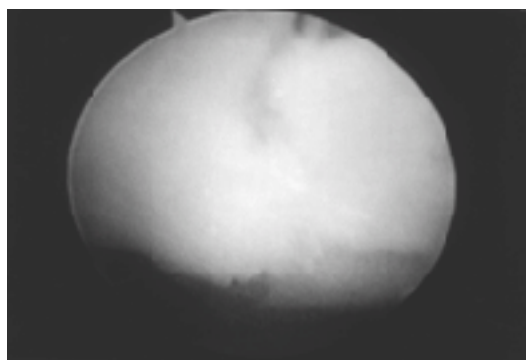


Fig 3. Arthroscopic findings of left ankle joint show removal of blood, fibrin, loose body and reduction of intraarticular fracture.

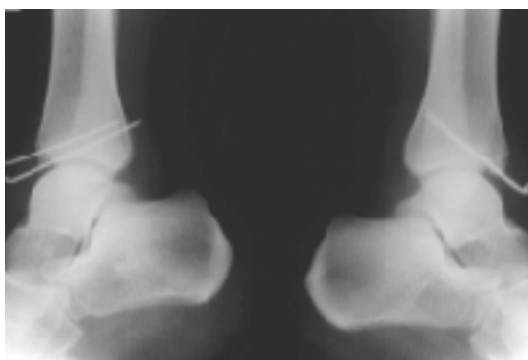


Fig 4. Postoperative both ankle lateral roentgenogram show anatomic reduction and internal fixation with two K-wires.



Fig 5. At postoperative 3 months, both ankle lateral roentgenogram show bony union without displacement.

(Fig. 4).

6

6

가

K-

3

(Fig. 2).

K-

motorized

shaver

(Fig. 3).

K-

K-

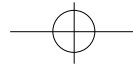
K-

(Fig. 5),

1

가

가



1).

25%

가

3).

25%

Whipple ⁴⁾ 2mm

4)

2mm

가

가

REFERENCES

1) **Ayeni JP** : Pilon fractures of the tibia. A study based on 19 cases. *Injury*, 19(2): 109-114, 1988.

2) **Ferkel RD and Fasulo GJ** : Arthroscopic treatment of ankle injuries. *Orthop Clin N Am*, 25:17, 1994.

3) **Rockwood CA, Green DP, Bucholz RW and Heckman JD** : *Fractures in adults*. 4th ed, Philadelphia, Lippincott-Raven Co:2236, 1996.

4) **Whipple TL, Martin DR, McIntyre LF and Meyers JF** : Arthroscopic treatment of triplane fractures of the ankle. *Arthroscopy: The Journal of Arthroscopic and Related Surgery*, 9(4):456-463, 1993.

5) **Yates CK and Grana WA** : A simple distraction technique for ankle arthroscopy. *Arthroscopy*, 4:103-105, 1988.

2). Ferkel

Fasulo²⁾

9.8% 가

가

4)