

1

Rendu - Osler - Weber

disease (Fig 1G).

가

(1, 2).

(Fig. 1H).

가

1 (CT)

29

가

16700/mm³, 54*103/ul

10.4 g/dL,

가

3가

가 (3).

(Computed Tomography: CT)

가

가

(Fig. 1A, B).

가

(Fig. 1C, D). CT

가

가

9 mm

1 cm

가

(Fig.

1E, F).

11 cm 가

가

(5, 6).

가

2008 6 24

2008 7 31

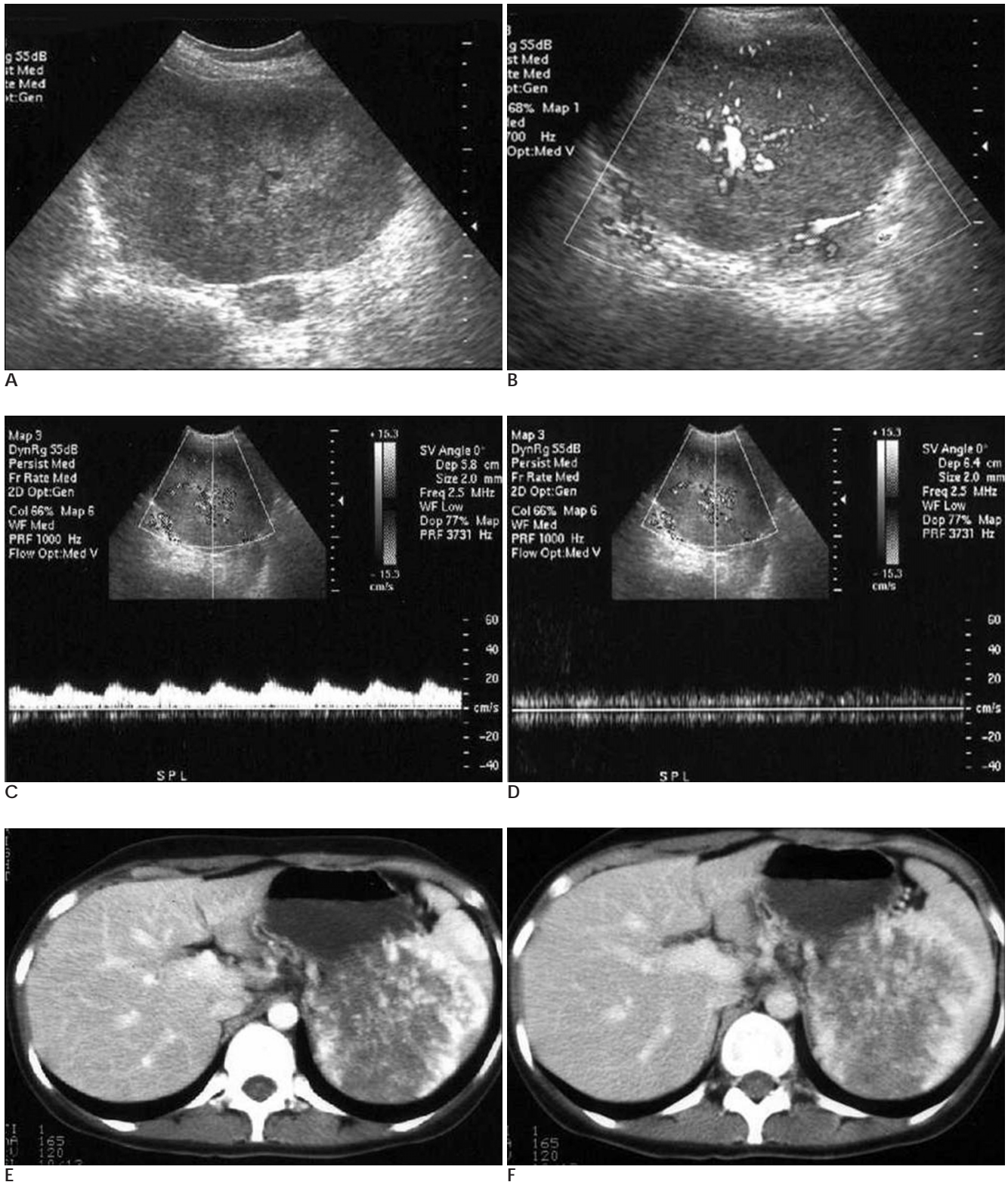


Fig. 1. Splenic AVM in a 29-year-old woman with HHT and thrombocytopenia.
 A, B. Sonogram of the spleen shows a large heterogeneous hyperechoic mass with increased vascular flow.
 C, D. Color doppler sonogram demonstrates predominant arterial and venous flow.
 E, F. Axial CT image demonstrates that well-defined large hypodense mass in the spleen contains engorged vascular structure especially in the peripheral side of the mass.

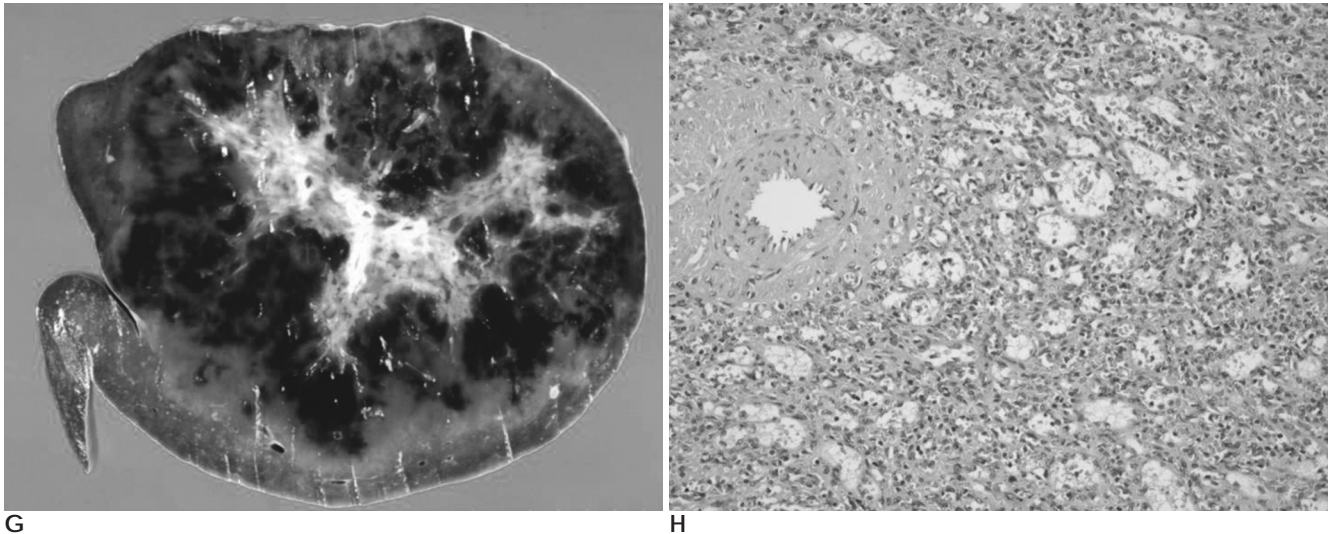


Fig. 1. G. Photography of the gross specimen shows well-defined, highly vascular soft tissue mass with prominent thick-walled vessels.

H. Photomicrograph (hematoxylin-eosin, original magnification $\times 200$) shows that the mass is mostly composed of anastomosing veins and some intermingled tortuous large muscular arteries, which is consistent with AVM.

가 (5).

(7).

(8).

4 cm

가

15 - 20%

4 - 22%

(9).

가

(7).

Endoglin

ALK - 1

가

(10).

1. Halpern M, Turner AF, Citron BP. Hereditary hemorrhagic telangiectasia. An angiographic study of abdominal visceral angiodysplasias associated with gastrointestinal hemorrhage. *Radiology* 1968;90:1143-1149
2. Trell E, Johansson BW, Linell F, Ripa J. Familial pulmonary hypertension and multiple abnormalities of large systemic arteries in Osler's disease. *Am J Med* 1972;53:50-63
3. Shovlin CL, Guttmacher AE, Buscarini E, Faughnan ME, Hyland RH, Westermann CJ, et al. Diagnostic criteria for hereditary hemorrhagic telangiectasia (Rendu-Osler-Weber syndrome). *Am J Med Genet* 2000;91:66-67
4. Varnholt H, Kradin R. Pulmonary capillary hemangiomatosis arising in hereditary hemorrhagic telangiectasia. *Hum Pathol* 2004;35:266-268
5. Siddiki H, Doherty MG, Fletcher JG, Stanson AW, Vrtiska TJ, Hough DM, et al. Abdominal findings in hereditary hemorrhagic telangiectasia: pictorial essay on 2D and 3D findings with isotropic multiphase CT. *Radiographics* 2008;28:171-184
6. Ianora AA, Memeo M, Sabba C, Cirulli A, Rotondo A, Angelelli G. Hereditary hemorrhagic telangiectasia: multi-detector row helical CT assessment of hepatic involvement. *Radiology* 2004;230:250-259
7. Folz BJ, Wollstein AC, Alfke H, Dünne AA, Lippert BM, Görg K, et al. The value of screening for multiple arterio-venous malformations in hereditary hemorrhagic telangiectasia: a diagnostic study. *Eur Arch Otorhinolaryngol* 2004;261:509-516
8. Notoya A, Bohgaki T, Mukai M, Kohno M, Sato H, Sawada K.

- Splenomegaly and chronic disseminated intravascular coagulation in Osler-Weber-Rendu disease: a case report. *J Am J Hematol* 2000; 65:315-318
9. Shovlin CL, Letarte M. Hereditary haemorrhagic telangiectasia and pulmonary arteriovenous malformations: issues in clinical

- management and review of pathogenic mechanisms. *Thorax* 1999; 54:714-729
10. Jacobson BS. Hereditary hemorrhagic telangiectasia: a model for blood vessel growth and enlargement. *Am J Pathol* 2000;156:737-742

J Korean Radiol Soc 2008;59:197 - 200

Splenic Arteriovenous Malformation Manifested by Thrombocytopenia in Hereditary Hemorrhagic Telangiectasia: A Case Report¹

Hee Jin Kwon, M.D., Jong Cheol Choi, M.D., Jong Yeong Oh, M.D., Jin Han Cho, M.D.,
Myongjin Kang, M.D., Jin-Hwa Lee, M.D., Seong-Kuk Yoon, M.D., Kyeong Jin Nam, M.D.

¹Department of Radiology, College of Medicine, Dong-A University

Hereditary hemorrhagic telangiectasia (HHT) is an autosomal dominant inherited disease characterized by epistaxis, telangiectases and visceral arteriovenous malformations (AVMs). The involvement of the gastrointestinal tract, liver, lung and cerebrum for HHT has been described, whereas little is known about AVMs of the spleen. We report here the radiological findings of a case of a splenic AVM manifested by thrombocytopenia in HHT.

Index words : Spleen

Arteriovenous malformations
Tomography
X-Ray Computed ultrasonography
Telangiectasia
Hereditary hemorrhagic

Address reprint requests to : Jong Cheol Choi, M.D., Department of Radiology, Dong-A University Hospital
1,3-ga, Dongdaesin-dong, Seo-gu, Busan 602-103 Korea.
Tel. 82-51-240-5367 Fax. 82-51-253-4931