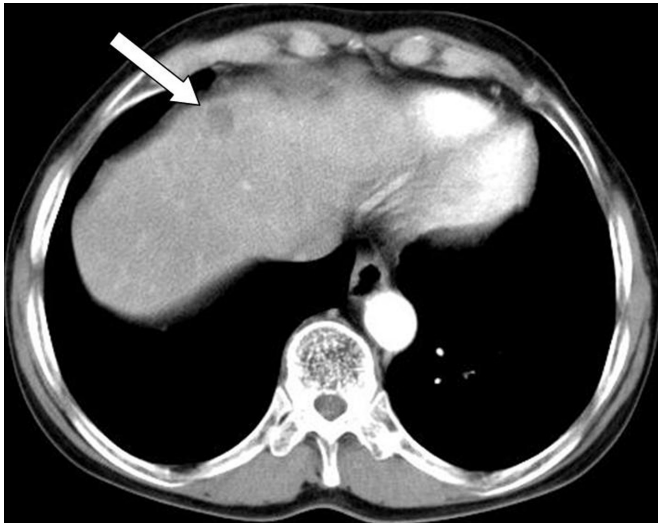


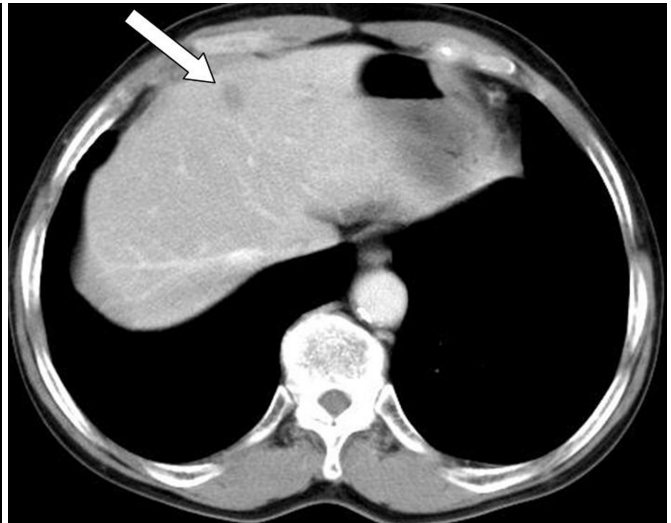
가

(Ciliated hepatic foregut cyst, CHFC)
 (1). 1857
 Friedrich (2)
 가 1984 Wheeler Edmondson (3) CHFC
 (4). (outer fibrous capsule), (smooth muscle layer), (subepithelial connective tissue layer), 가 (ciliated pseudostratified columnar epithelium) × 1.5 cm 가 (Fig. 1A, B).
 (1).
 CHFC (malignant transformation) 가 4 1.5 cm (dark yellowish mucinous fluid) 가 (Fig. 1C, D). CHFC 4.5 × 5.5 cm
 (5). (CT) 7 (6). CT 4 CHFC
 가 (wedge resection) CHFC
 68 가
 CHFC (embryonic foregut)
 가 (7). CHFC
 가 Wheeler CHFC 가
 Edmondson 1984 (3)
 2007 9 27 2007 11 15
 1
 2
 3

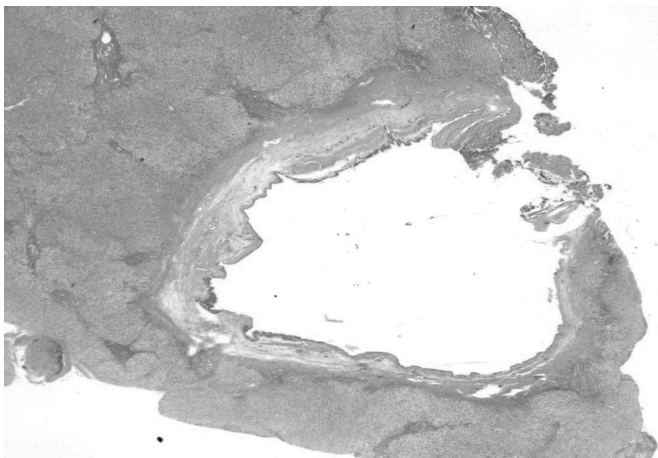
CHFC 3 cm
 Chatelain (8) 2000
 CHFC
 (abnormal
 bronchial bud)
 (dominant
 lobe)
 CHFC 가
 (milky white or brown mucoid
 material)
 CT (4).
 (7). CT
 (MRI) T2 T1
 (4).
 , MRI T2
 CT
 CHFC가
 (solitary necrotic nodule)
 (9) CHFC
 4



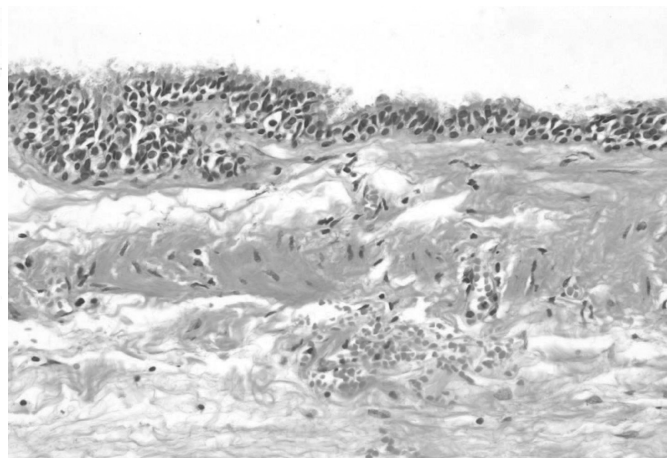
A



B



C



D

Fig. 1. Dynamic contrast-enhanced abdominal CT scan show an about 1.5 cm-sized, low-attenuating mass (arrow) in segment IV of left hepatic lobe at arterial dominant phase (A) and tissue equilibrium (B) images.

The photomicrograph show a unilocular cyst (C, H & E stain, $\times 10$). The cyst is lined by ciliated pseudostratified epithelium and the wall is composed of subepithelial connective tissue, smooth muscle layers and fibrinous capsule (D, H & E stain, $\times 200$).

가 3 가 7
 (6). 3 가 1
 가 가 MRI T2 CHFC
 가
 CHFC
 (sclerosing therapy)
 (squamous metaplasia)
 가 4
 (5, 10) 가 가
 가 가 CHFC가
 , CT
 , T2

1. Bogner B, Hegedus G. Ciliated hepatic foregut cyst. *Pathol Oncol Res* 2002;8: 278-279
2. Friedreich N. Cyste mit Flimmerepithelial in der Leber. *Arch Pathol Anat* 1857;11:466-469
3. Wheeler DA, Edmondson HA. Ciliated hepatic foregut cyst. *Am J Surg Pathol* 1984;8:467-470
4. Horii T, Ohta M, Mori T, Sakai M, Hori N, Yamaguchi K, et al. Ciliated hepatic foregut cyst. A report of one case and a review of the literature. *Hepatol Res* 2003;26:243-248
5. Ben Mena N, Zalinski S, Svrcek M, Lewin M, Flejou JF, Wendum D, et al. Ciliated hepatic foregut cyst with extensive squamous metaplasia: report of a case. *Virchows Arch* 2006;449:730-733
6. Straus T, Osipov V. Ciliated hepatic foregut cyst in a patient with renal cell carcinoma. *BMC Cancer* 2006;6:244
7. Kadoya M, Matsui O, Nakanuma Y, Yoshikawa J, Arai K, Takashima T, et al. Ciliated hepatic foregut cyst: radiologic features. *Radiology* 1990;175:475-477
8. Chatelain D, Chailley-Heu B, Terris B, Molas G, Le Cae A, Vilgrain V, et al. The ciliated hepatic foregut cyst, an unusual bronchiolar foregut malformation: a histological, histochemical, and immunohistochemical study of 7 cases. *Hum Pathol* 2000;31:241-246
9. Vick Dj, Goodman ZD, Deavers MT, Cain J, Ishak KG. Ciliated hepatic foregut cyst: a study of six cases and review of the literature. *Am J Surg Pathol* 1999;23:671-677
10. Furlanetto A, Dei Tos AP. Squamous cell carcinoma arising in a ciliated hepatic foregut cyst. *Virchows Arch* 2002;441:296-298

A Case Report of a Ciliated Hepatic Foregut Cyst in the Liver¹

Kyu Chan Oh, M.D., Won Kyu Park, M.D., Jay Chun Jang, M.D., Joon Hyuk Choi, M.D.²,
Dong Shik Lee, M.D.³, Kum Rae Kim, M.D.

¹Department of Diagnostic Radiology,

²Department of Pathology and ³Department of Surgery, College of Medicine, Yeungnam University

A ciliated hepatic foregut cyst (CHFC) is a rare cystic lesion consisting of a ciliated pseudostratified columnar epithelium, subepithelial connective tissue, a smooth muscle layer, and an outer fibrous capsule. A CHFC is usually unilocular and occurs at a higher frequency in males. A predilection exists at the medial segment located at the left lobe of the liver. We report the first case of a ciliated hepatic foregut cyst mimicking hepatic metastasis on a CT scan of a patient concurrently afflicted with gastric cancer.

Index words : Liver disease

Cysts

Tomography, X-ray computed

Cilia

Address reprint requests to : Won Kyu Park, M.D., Department of Diagnostic Radiology, College of Medicine, Yeungnam University,
317-1, Daemyungdong, Namgu, Daegu 705-717, Korea.
Tel. 82-53-620-3048 Fax. 82-53-653-5484 E-mail: wkpark@ynu.ac.kr