



(giant cell) (cholesterol crystal)
(fibrous granulation tissue) (1).

3 1 8

(middle ear) (multinuclear giant cell) 가 ,
(histiocyte), (lymphocyte), (plasma
cell) (fibroblastic reaction),
(granulomatous zone)
(1). (cholesterol granuloma) (Fig 1C).

8 가 ,

3 가 .
1

60 가 1 cm 가 가 (1).
(parotid
gland) 가 (1)

10 1.0×0.87×1.1 cm 가 (2).
(lobulation)
(mammary
ductectasia)

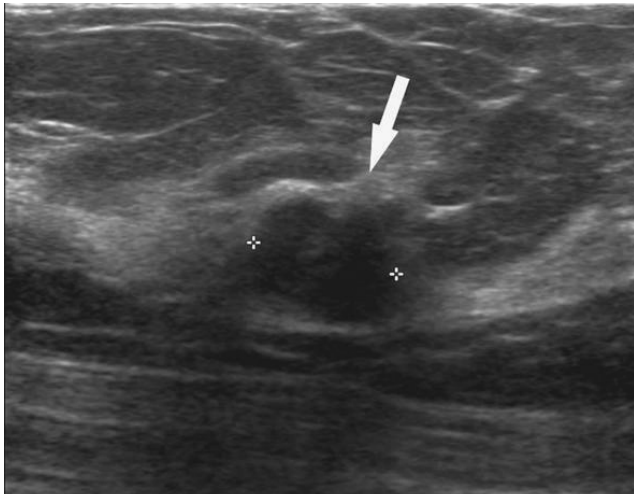
BI - RADS Category 4a (Fig. 1A, B).
(automatic

gun biopsy)

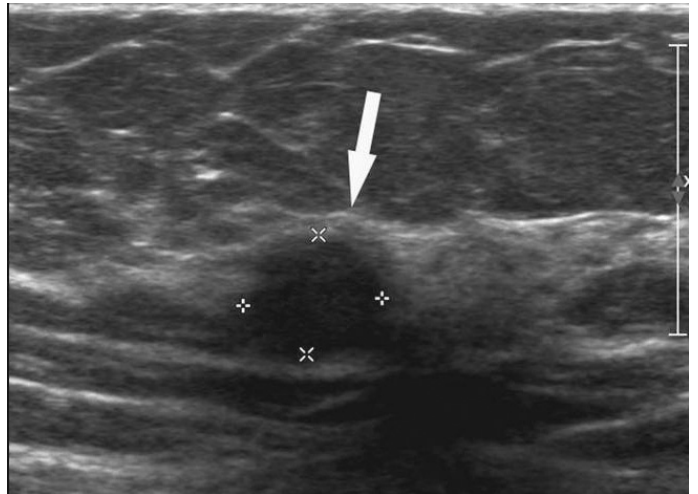
가
(3).

1
2

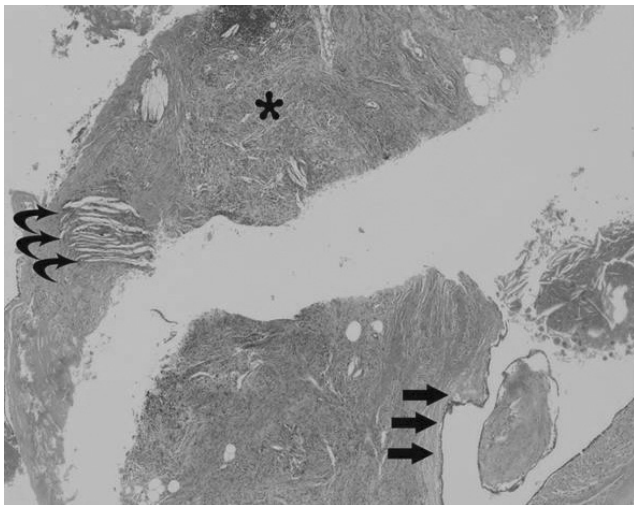
2008 1 30 2008 4 25



A



B



C

Fig 1. A 60-year-old woman with cholesterol granuloma of the breast.

A, B. Longitudinal (**A**) and axial (**B**) sonographic image shows a microlobulated, round hypoechoic mass (white arrow).

C. Microscopic findings reveal dilated duct (black arrows) and cholesterol granuloma showing cholesterol crystals (curved arrows) encased by histiocytes and giant cells with surrounding granulomatous zone (asterisk) of histiocytes, lymphocytes, plasma cells, and fibroblastic reaction.

가

BI - RADS Category 4a

(4).

8

8

6

가

2

,

,

(1, 3-5).

가

가

,

,

가

가

(1, 3, 4).

가

(lobulation)

(5).

8

2

2

1

(3),

(4)

2

1

(papillomatous)

가

(1).

1. Smith GL, Hicks P, Wijesinghe DP, Holme TC. Cholesterol granuloma of the breast presenting as an intracystic papilloma. *Br J Radiol* 1997;70:1178-1179
2. Page DL, Anderson TJ. *Miscellaneous non-neoplastic conditions*. Page DL, Anderson TJ. In *Diagnostic histopathology of the breast*. New York: Churchill Livingstone, 1987:62-64
3. Reynolds HE, Cramer HM. Cholesterol granuloma of the breast: a mimic of carcinoma. *Radiology* 1994;191:249-250
4. Osada T, Kitayama J, Nagawa H. Cholesterol granuloma of the breast mimicking carcinoma: report of a case. *Surg Today* 2002;32:981-984
5. Wilhelmus JL, Schrodtt GR, Mahaffey LM. Cholesterol granulomas of the breast: a lesion which clinically mimics carcinoma. *Am J Clin Pathol* 1982;77:592-597

J Korean Radiol Soc 2008;58:627 - 629

Cholesterol Granuloma of the Breast: A Case Report¹

Jung eun Kim, M.D., In Seo Park, M.D.², Kyung Hee Lee, M.D.,
Mi Young Kim, M.D., Youn Jeong Kim, M.D.

¹Department of Radiology, College of Medicine, Inha University

²Department of Pathology, College of Medicine, Inha University

Cholesterol granuloma is histologically characterized as fibrous granulation tissue containing cholesterol crystals within surrounding giant cells. Cases of cholesterol granuloma of the breast are rare (1). In fact, only eight cases have been previously described, and of these, an ultrasonography was performed in only . Here, we report the ultrasonographic findings of a breast cholesterol granuloma accompanied with with a literature review.

Index words : Breast diseases
Cholesterol
Ultrasonography (US)

Address reprint requests to : Youn Jeong Kim, M.D., Department of Radiology, College of medicine, Inha University
7-206, 3-ga, shinheung-dong, jung-gu, Incheon 400-711, Korea
Tel. 82-32-890-2769 Fax. 82-32-890-2743 E-mail: Cuteyj9@freechal.com