

# 24

1

1,2

2

: 2006 3 24

가

: 17

24

10

3가

; 2)

; 3)

. 1)

5

: 3

가 24

4.6 ( 3~5 )

CT MR

4.8 ( 4-5 )

4.9 ( 4-5 )

24

2006 3

가 24

가

5

3

24

가

가 가

가

가

가

1 3

가  
, CT MRI

3

가

on

가

call

, CT MRI

PACS

2007 5 30

2007 11 16

24  
24  
3  
가  
CT MRI  
PACS  
6 10 3 1 5  
3  
10  
3  
WEB - PACS  
24  
2006 3 5  
3

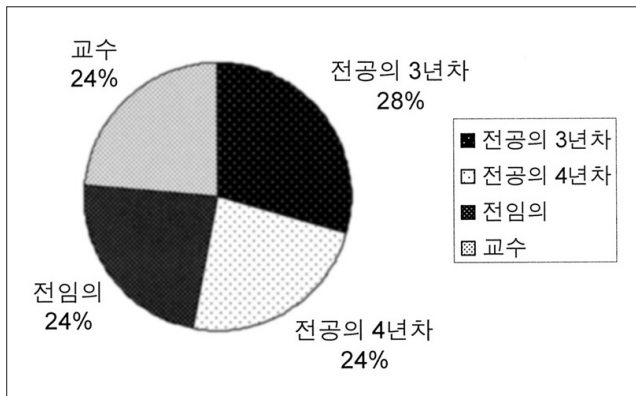


Fig. 1. The analysis of survey participants.

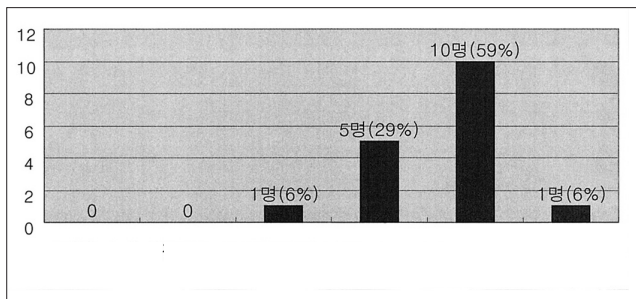


Fig. 2. The satisfaction score on the around-the-clock radiology coverage system by two full-time radiology residents compared with the previous system by night-duty resident.

24  
17  
4가  
1) ; 2)  
; 3) ; 4)  
( ). 5 10  
SPSS (version 11.0; SPSS, Chicago, IL)  
Wilcoxon  
signed rank test . P 0.05  
17 가 14  
가 3  
4 , 가 4 , 가 9 (Fig. 1).

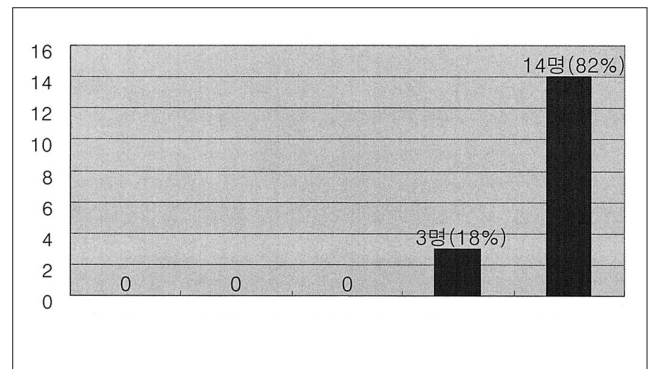


Fig. 3. The satisfaction score on the preliminary interpretation system by radiology residents.

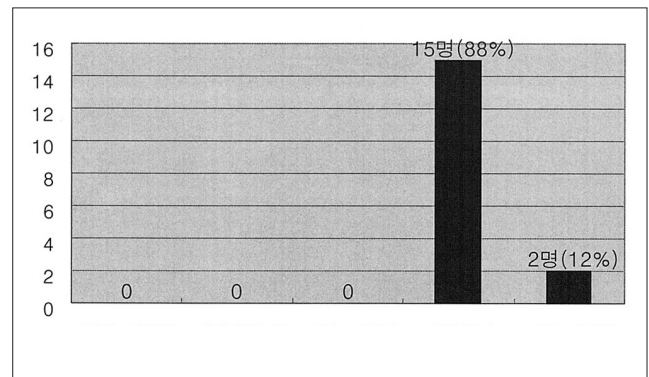
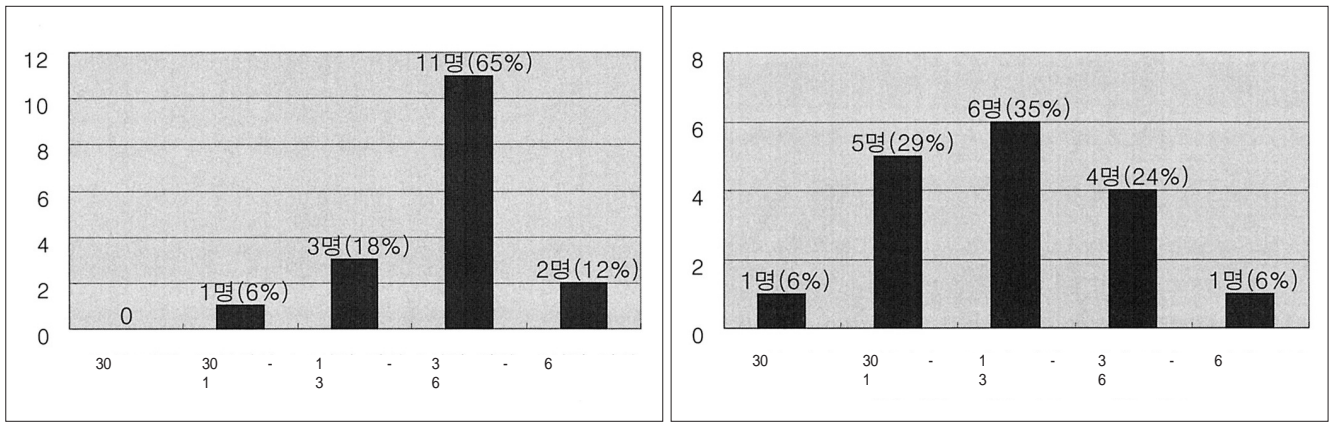


Fig. 4. The reliability score of the preliminary interpretations by radiology residents.



**A.** The sensory index of the time for the final interpretations.  
**B.** The sensory index of the time for the preliminary interpretations.

2006 3 12 , 4 5

13

3 가 24

4.6

( , 10 ; , 4 ; , 1 ;

( , 1 ) (Fig. 2).

(6 ), (6

), (4

), (4 ) .

가

? ' 3 가

15 , 4 가 2 .

가

CT MR PACS

4.8 ( , 14 ; , 3 )

(Fig. 3).

4.1 ( , 15 ; , 2 )

(Fig. 4). 가

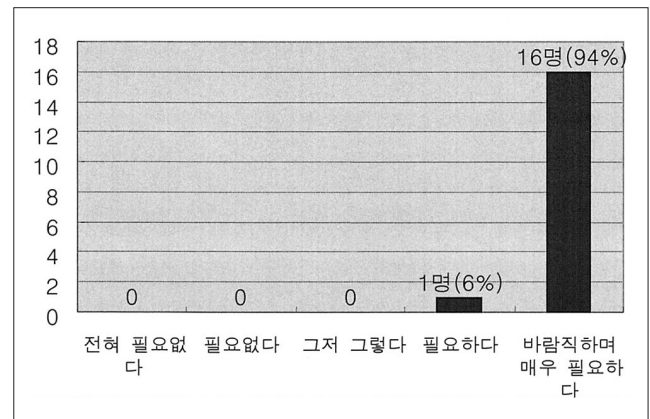
5.0

2.5 가

( $p=0.002$ , Fig. 5). , 17 10

가 16 , ' , 가 1 4.9 call , 2, 3 on

(Fig. 6).



**Fig. 6.** The need of the interpretation assistance system by board-certified radiologists.

24

20 30 106 가

가 , 6 40 24 가 (59%)

3

가 24

가 가 가

가

CT MR 3

24

CT MR

가

가

CT (2, 4, 5, 7),

가 (1, 3 - 6).

가

가

가

가 (2, 4, 5). Velmahos (2)

11%(42/383) 가

5%(20/483)

44

가 , , ' 가 26 (59.1%) , 가 11 (25%)

7 ' ,

1. Roszler MH, McCarroll KA, Rashid T, Donovan KR, Kling GA. Resident interpretation of emergency computed tomographic scans. *Invest Radiol* 1991;26:374-376
2. Velmahos GC, Fili C, Vassiliu P, Nicolaou N, Radin R, Wilcox A. Around-the-clock attending radiology coverage is essential to avoid mistakes in the care of trauma patients. *Am J Surg* 2001;67:1175-1177
3. Albano MC, Ross GW, Ditchek JJ, Duke GL, Teegeer S, Sostman HD, et al. Resident interpretation of emergency CT scans in the evaluation of acute appendicitis. *Acad Radiol* 2001;8:915-918
4. Carney E, Kempf J, DeCarvalho V, Yudd A, Noshier J. Preliminary interpretations of after-hours CT and sonography by radiology residents versus final interpretations by body imaging radiologists at a level 1 trauma center. *AJR Am J Roentgenol* 2003;181:367-373
5. Wechsler RJ, Spettell CM, Kurtz AB, Lev-Toaff AS, Halpern EJ, Nazarian LN, et al. Effects of training and experience in interpretation of emergency body CT scans. *Radiology* 1996;199:717-720
6. Wysoki MG, Nassar CJ, Koenigsberg RA, Novelline RA, Faro SH, Faerber EN. Head trauma: CT scan interpretation by radiology residents versus staff radiologists. *Radiology* 1998;208:125-128
7. Yoon LS, Haims AH, Brink JA, Rabinovici R, Forman HP. Evaluation of an emergency radiology quality assurance program at a level I trauma center: abdominal and pelvic CT studies. *Radiology* 2002;224:42-46

1. Roszler MH, McCarroll KA, Rashid T, Donovan KR, Kling GA. Resident interpretation of emergency computed tomographic scans. *Invest Radiol* 1991;26:374-376
2. Velmahos GC, Fili C, Vassiliu P, Nicolaou N, Radin R, Wilcox A. Around-the-clock attending radiology coverage is essential to avoid mistakes in the care of trauma patients. *Am J Surg* 2001;67:1175-1177
3. Albano MC, Ross GW, Ditchek JJ, Duke GL, Teeger S, Sostman HD, et al. Resident interpretation of emergency CT scans in the evaluation of acute appendicitis. *Acad Radiol* 2001;8:915-918
4. Carney E, Kempf J, DeCarvalho V, Yudd A, Noshier J. Preliminary interpretations of after-hours CT and sonography by radiology residents versus final interpretations by body imaging radiologists at a level 1 trauma center. *AJR Am J Roentgenol* 2003;181:367-373
5. Wechsler RJ, Spettell CM, Kurtz AB, Lev-Toaff AS, Halpern EJ, Nazarian LN, et al. Effects of training and experience in interpretation of emergency body CT scans. *Radiology* 1996;199:717-720
6. Wysoki MG, Nassar CJ, Koenigsberg RA, Novelline RA, Faro SH, Faerber EN. Head trauma: CT scan interpretation by radiology residents versus staff radiologists. *Radiology* 1998;208:125-128
7. Yoon LS, Haims AH, Brink JA, Rabinovici R, Forman HP. Evaluation of an emergency radiology quality assurance program at a level I trauma center: abdominal and pelvic CT studies. *Radiology* 2002;224:42-46

3 ?  
가 .

1. ?  
1 2 3 4

2. 2006 3 , 4 , 5 가 V .  
2006 3 2006 4 2006 5

\*  
3. 1 3 가 , 3 1  
가 3 2 3 가 24  
?

3-1. ?

4. 3 가 .  
가 ?  
1-2 3  
4 가

\*  
5. PACS (preliminary report) .  
?

6. , ?

7. ?  
30 30 - 1 1 - 3  
3 - 6 6

8. ?  
 30 30 - 1 1 - 3  
 3 - 6 6

9. 가 ?

\*  
 10. junior faculty 가 6 10 , 1 5  
 3 backup ( 10 ) WEB - PACS 가 backup ?

J Korean Radiol Soc 2008;58:543-548

## New Around-the-clock Radiology Coverage System for the Emergency Department: A Satisfaction Survey among Clinicians<sup>1</sup>

Young Hun Choi, M.D., Hwan Jun Jae, M.D.<sup>1,2</sup>, Cheong-Il Shin, M.D.,  
 Su Jin Song, M.D., Won Cheol Cha, M.D.<sup>2</sup>, Dong Gyu Na, M.D.

<sup>1</sup>Department of Radiology, Seoul National University Hospital

<sup>2</sup>Emergency Medicine, Seoul National University Hospital

**Purpose:** The purpose of this study was to assess the clinician satisfaction of a newly introduced around-the-clock radiology coverage system for the emergency department.

**Materials and Methods:** Seventeen emergency physicians (8 board certified physicians, 9 residents) were invited to fill out a survey pertaining to the newly introduced radiology coverage system for the emergency department. The questionnaire included 10 questions covering three major topics. The first topic related to the around-the-clock radiology coverage by two full-time radiology residents. The second topic focused on the preliminary interpretations of radiology residents. The last topic included the interpretation assistance system by board-certified radiologists. The answers to each question were assessed using a scoring system of 1 to 5.

**Results:** The mean satisfaction score of the around-the-clock radiology coverage system by the two full-time radiology residents was 4.6 (range 3 - 5). The mean score for the preliminary interpretation system by the radiology residents was 4.8 (range 4 - 5). The score for the reliability of the preliminary versus the final interpretations was 4.1 (range 4 - 5). Lastly, the mean score for the interpretation assistance system by board-certified radiologists was 4.9 (range 4 - 5).

**Conclusion:** The results of this study indicate a high satisfaction rating among clinicians ' of the new around-the-clock radiology coverage system for the emergency department.

**Index words :** Emergency Service, hospital  
 Radiology and Radiologists, department management