



(apocrine carcinoma) 0.4%

,  
가  
가

1

(apocrine carcinoma) (juvenile) (pleomorphic) (desmoplastic)  
1981 Haagensen (1) carcinoma) . 21 2 가 (Fig.  
0.4(2) - 60%(1) . 1C, D). , p53, c-erb  
, B2 , T1N1M0 2A 2  
가 . 42 1 11 .

42 1 0.4 (2) - 60% (1)  
가 . Azzopardi (2)  
가 80% , Haagensen  
(1) (granule)  
가 . Haagensen  
(echogenic halo)가 (1) (metaplasia)  
(Fig. 1A, B). 가 50% (3).  
(Doppler) 8 11 Onoue (4)  
(frozen) , 가  
American Cancer Society and the College of American  
Pathologists

(5).

1  
2  
3

2007 4 24

2007 6 25

가 45

가 1.3 2 가 (6). 가 42

(6).

가 가

가

Gilles (7)

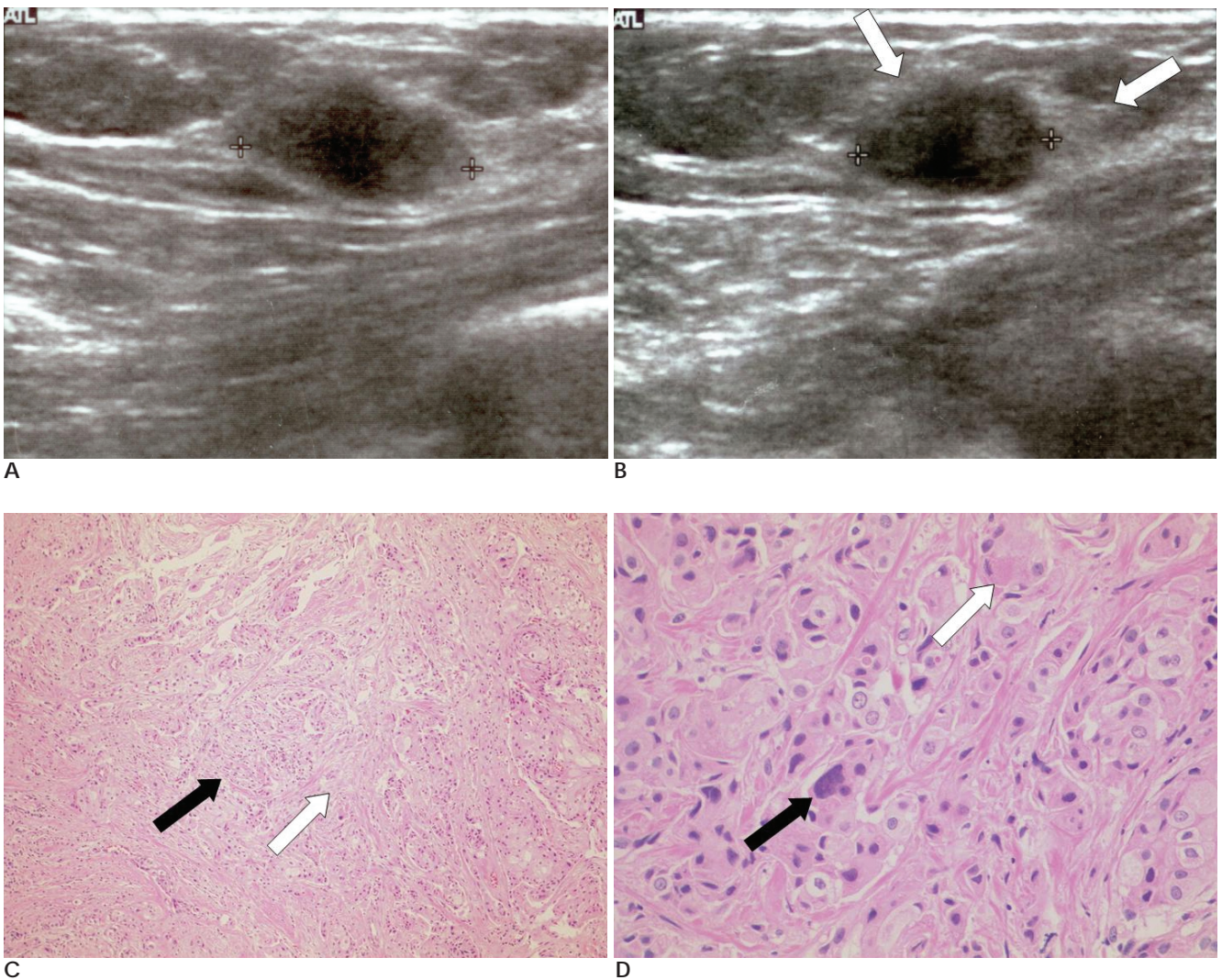
가

Takeuchi (8) 1.6%

Kopans Gilles (7, 9) Kopans (9)

80% Gilles (7) 가

Kopans



**Fig. 1.** A 42 year-old woman with a palpable mass in 2 hour of the left breast.

**A, B.** Transverse and longitudinal sonograms show oval, microlobulated, parallel and heterogeneous hypoechoic mass with echogenic halo (white arrow). The center of the mass is markedly hypoechoic feature and periphery of the mass is mixture of hyperechoic and hypoechoic features.

**C.** Microscopically, nests of invasive apocrine carcinoma (black arrow) with surrounding desmoplastic reaction (white arrow) (H & E,  $\times 100$ ).

**D.** Tumor cells show pleomorphic nuclei (black arrow) and abundant eosinophilic cytoplasm (white arrow) (H & E,  $\times 400$ ).

Onoue (4) 60  
가 2  
2  
가 .

(projection)가

(10)

가  
(desmoplastic)

가 .

가

가

1. Haagensen CD, Bodian C, Haagensen DE Jr. *Breast carcinoma: risk and detection*. Philadelphia: Saunders, 1981
2. Azzopardi JG. *Problems in breast pathology. vol 2, Major problems in pathology*. London, England: Saunders, 1979
3. Page DL. Apocrine carcinoma of the breast. *Breast* 2005;14:1-2
4. Onoue S, Katoh T, Chigira H, Matsuo K, Suzuki M, Shibata Y, et al. A case of apocrine carcinoma of the breast presenting as two cysts. *Breast Cancer* 1997;31:193-196
5. Is "fibrocystic disease" of the breast precancerous? *Arch Pathol Lab Med* 1986;110:171-173
6. Wellings SR, Alpers CE. Apocrine cystic metaplasia: subgross pathology and prevalence in cancer associated versus random autopsy breasts. *Hum Pathol* 1987;18:381-386
7. Gilles R, Lesnik A, Guinebretiere JM, Tardivon A, Masselot J, Contesso G, et al. Apocrine carcinoma: clinical and mammographic features. *Radiology* 1994;190:495-497
8. Takeuchi H, Tsuji K, Ueo H, Kano T, Maehara Y. Clinicopathological features and long-term prognosis of apocrine carcinoma of the breast in Japanese women. *Breast Cancer Research and Treatment* 2004;88:49-54
9. Kopans DB, Nguyen PL, Koerner FC, White G, McCarthy KA, Hall DA, et al. Mixed form, diffusely scattered calcifications in breast cancer with apocrine features. *Radiology* 1990;177:807-811
10. Cooper PH. Carcinoma of sweat glands. *Pathology Annual* 1987;22: 83-124

## Apocrine Carcinoma of the Breast: A Case Report<sup>1</sup>

Do Youn Kim, M.D., Seok Seon Kang, M.D., Hwa-Young Kim, M.D., Eun-Kyung Ji, M.D.,  
Tae Hee Kwon, M.D., Hai-Lin Park, M.D.<sup>2</sup>, Jeong Yun Shim, M.D.<sup>3</sup>

<sup>1</sup>Department of Radiology, CHA Hospital, Pochon CHA University College of Medicine

<sup>2</sup>Department of General Surgery, CHA Hospital, Pochon CHA University College of Medicine

<sup>3</sup>Department of Pathology, CHA Hospital, Pochon CHA University College of Medicine

Apocrine carcinoma is a rare breast cancer and its frequency is about 0.4% of all breast cancers. Little is known about its clinical behavior and prognosis. To our knowledge, few studies have reported the radiologic appearances of apocrine carcinoma in the breast and there has been no such report from Korea. We describe the sonographic findings of a case of apocrine carcinoma in the breast. The sonographic findings are microlobulated heterogeneous hypoechoic lesion that has a central markedly hypoechoic portion and a peripheral mixture of iso and hypoechogenicity.

**Index words :** Breast

Carcinoma

Ultrasonography

Apocrine glands

Address reprint requests to : Do Youn Kim, M.D., Department of Radiology, CHA General Hospital, College of Medicine,  
Pochon CHA University, 650-9 Yuksam-dong, Kangnam-gu, Seoul 135-080, Korea.  
Tel. 82-2-3468-3348 E-mail: dy0202@hanmail.net