



가

(hiatal hernia)  
(sliding hernia)  
(paraesophageal hernia)

가

가

가

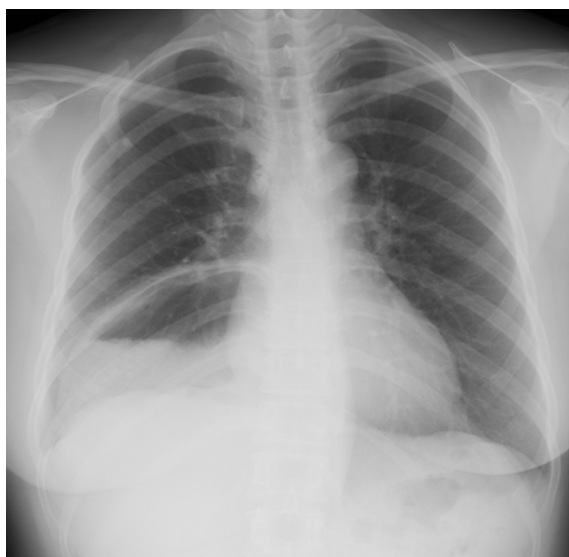
1).

(Computed tomography, (Fig. CT)

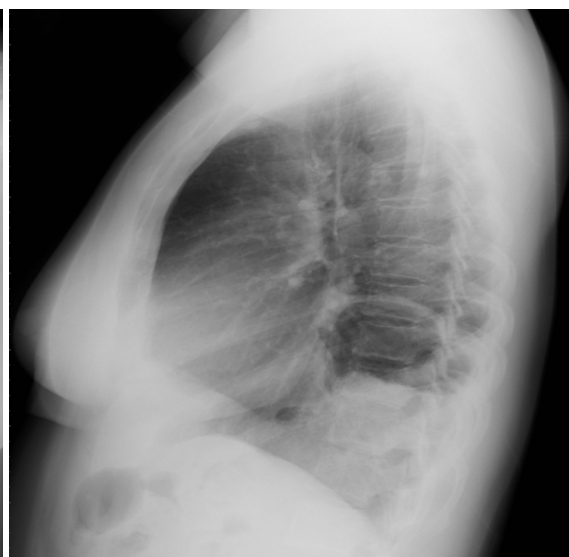
(pylorus)  
(Fig. 2).

44

가 4



A



B

**Fig. 1.** Chest PA (A) and lateral (B) radiographs show herniated stomach with air-fluid level in right lower thorax.

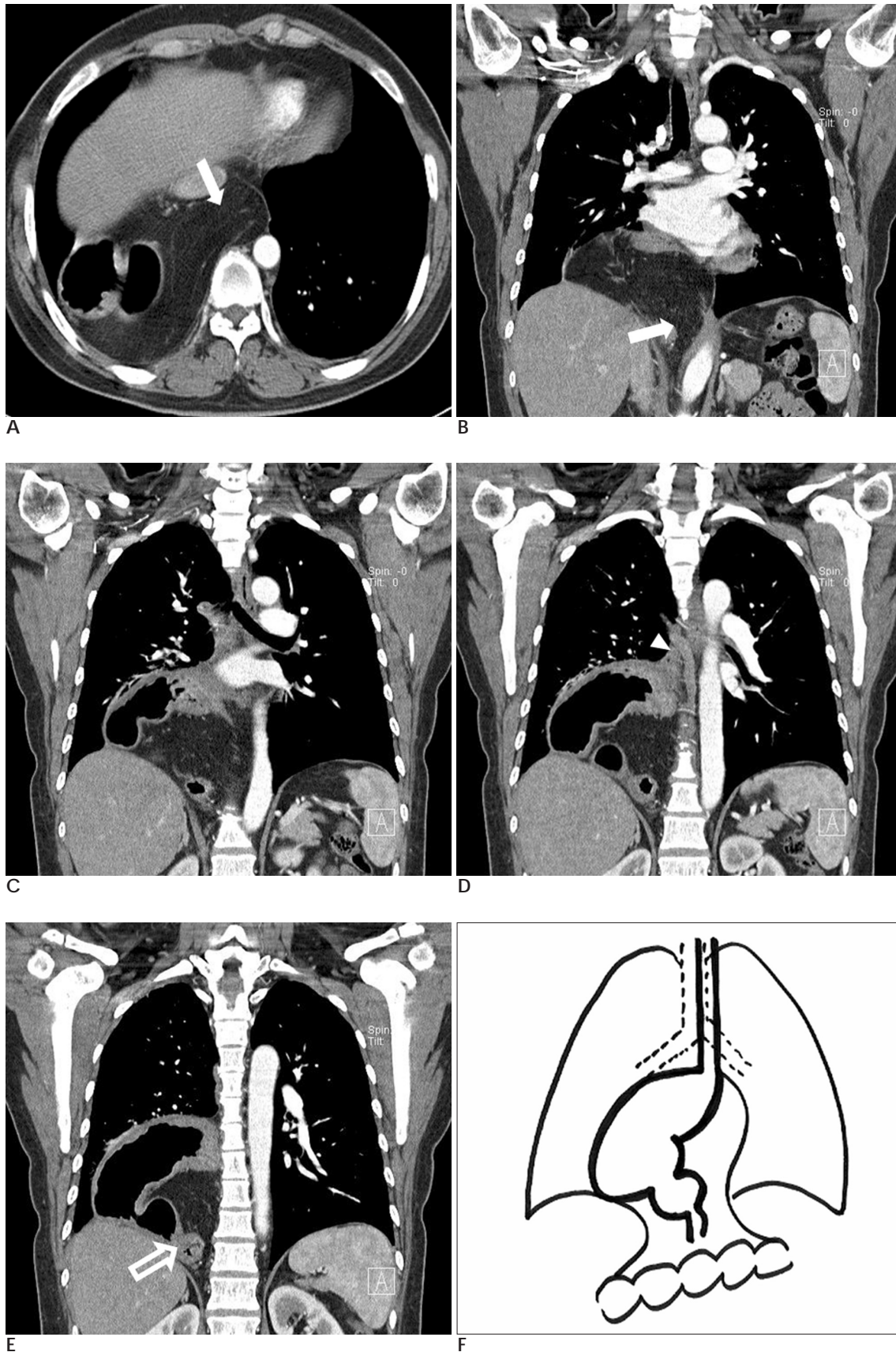
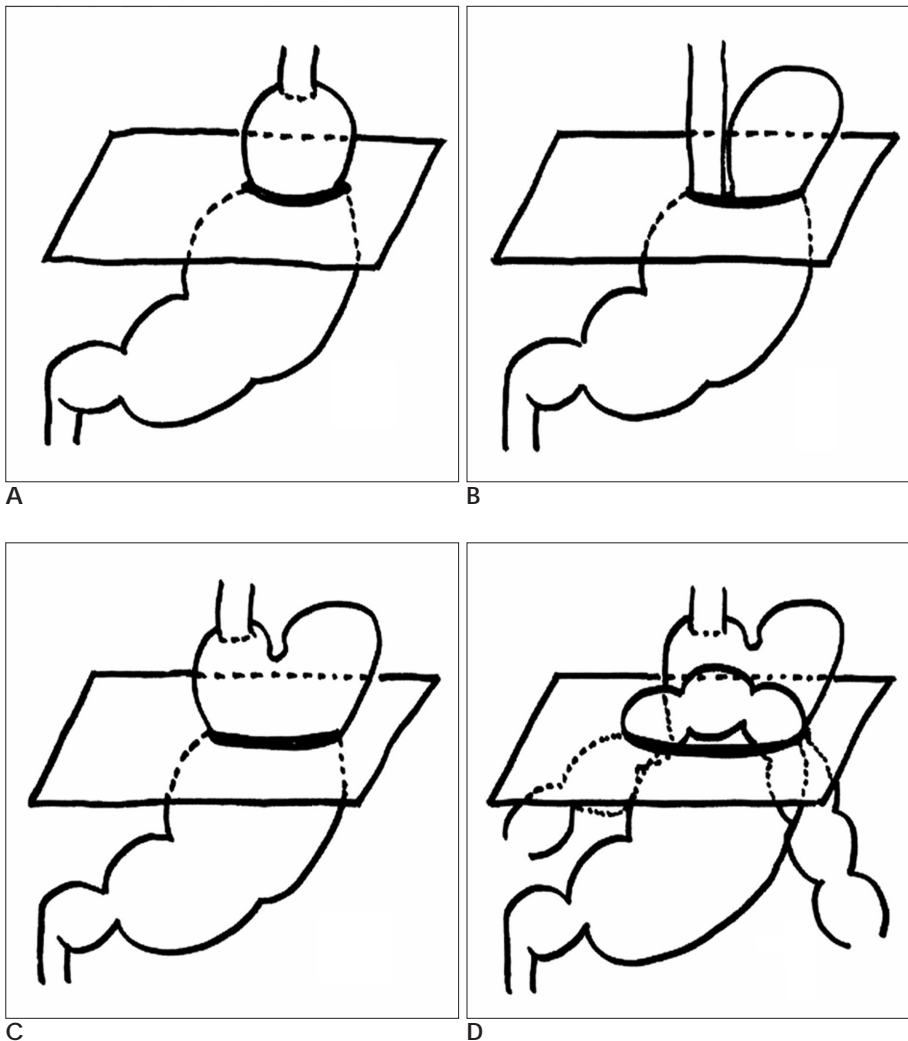


Fig. 2. Axial (A) and coronal (B-E) CT scans show herniated stomach and greater omentum through widened hiatus (arrow). Esophagogastric junction (arrowhead) and gastric pylorus (open arrow) are located in right lower thorax. Liver and the other organs are located in their own places. Illustration (F) shows intrathoracic located stomach with greater omentum in this case.

가 (1, 2).  
(organoaxial)  
가  
(Mesenteroaxial)  
가  
(1). 가  
가 가  
(1) (Fig. 3).  
( 99 )  
1  
가  
(1).  
가



**Fig. 3.** Four kinds of hiatal hernia.  
A. Type 1: sliding hernia.  
B. Type 2: paraesophageal hernia.  
C. Type 3: combined hiatal hernia.  
D. Type 4: hiatal hernia. Various abdominal organs including omentum are herniated into the thorax through marked widened diaphragmatic hiatus. It may be considered the variant of type 3.

multidetector CT (MDCT)

가

(3).

(2, 4, 5).

(2).

1. Abbara S, Kalan MM, Lewicki AM. Intrathoracic stomach revisited. *AJR Am J Roentgenol* 2003;181:403-414
2. Katkhouda N, Mavor E, Achanta K, Friedlander MH, Grant SW, Essani R, et al. Laparoscopic repair of chronic intrathoracic gastric volvulus. *Surgery* 2000;128:784-790
3. Rees JE, Robertson S, McNinch AW. Congenital paraesophageal hiatus hernia: an interesting family history. *Emerg Med J* 2004;21:749-750
4. Herek O, Yildiran N. A massive hiatal hernia that mimics a congenital diaphragmatic hernia. An unusual presentation of hiatal hernia in childhood: report of a case. *Surg Today* 2002;32:1072-1074
5. Iannelli A, Fabiani P, Karimjee BS, Habre J, Lopez S, Gugenheim J. Laparoscopic repair of intrathoracic mesenterioaxial volvulus of the stomach in an adult: report of a case. *Surg Today* 2003;33:761-763

J Korean Radiol Soc 2006;55:349 - 352

## Stomach in the Right Thorax Caused by Hiatal Hernia: A Case Report<sup>1</sup>

Ju Won Lee, M.D., Kyung-Hee Lee, M.D., Seung Min Kwak, M.D.<sup>2</sup>, Yong Sun Jeon, M.D.,  
Soon Gu Cho, M.D., Yoon Jung Kim, M.D.

<sup>1</sup>Department of Radiology, Inha University College of Medicine

<sup>2</sup>Department of Internal Medicine, Inha University College of Medicine

Intrathoracic stomach due to hiatal hernia is a very rare finding. We report here on such an asymptomatic case, and this malady was diagnosed by chest radiographs and CT.

**Index words :** Hernia, hiatal  
Computed tomography(CT)

Address reprint requests to : Kyung-Hee Lee, M.D., Department of Radiology, Inha University College of Medicine  
7-206, 3-ga, Sinheung-dong, Jung-gu, Incheon 400-711, Korea.  
Tel. 82-32-890-2761 E-mail: khlmay@hanmail.net