



가 1

가

neoplasm) (malignant plasma cell CT 5% (Fig. 1B).

(1). 가 (2). 4 4.5 × 3.2 cm (Fig. 1C)

가 (3, 4). CT (Fig. 1D). , monoclonal gammopathy, IgA, lambda type (lambda chain: 673 mg/dL) (Fig. 1E).

1

66 가 5 (monoclonal immunoglobulin protein) MRI CT 1%

5% , , , , , , (2, 5).

AST (aspartate aminotransferase) 22 IU/L, ALT (alanine aminotransferase) 23 IU/L, alkaline phosphatase 101 IU/L, total bilirubin 0.6 mg/dL, direct bilirubin 0.2 ng/dL (1).

CEA (carcinoembryonic antigen) 7.2 ng(mg)/mL, CA 19-9 67.6 U/mL 가 MRI 62 (5).

28% , 12% , 16% (4).

CT 4.5 cm 가 (Fig. 1A), (2, 3).

(6), CT

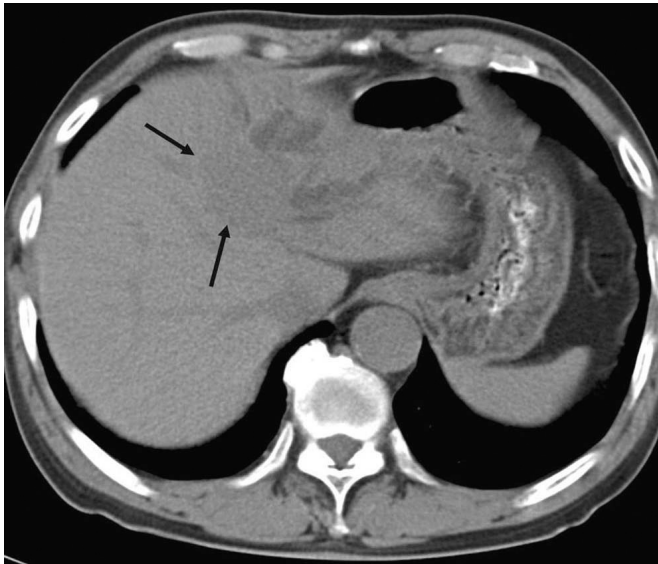
1
2
3

2005 10 25

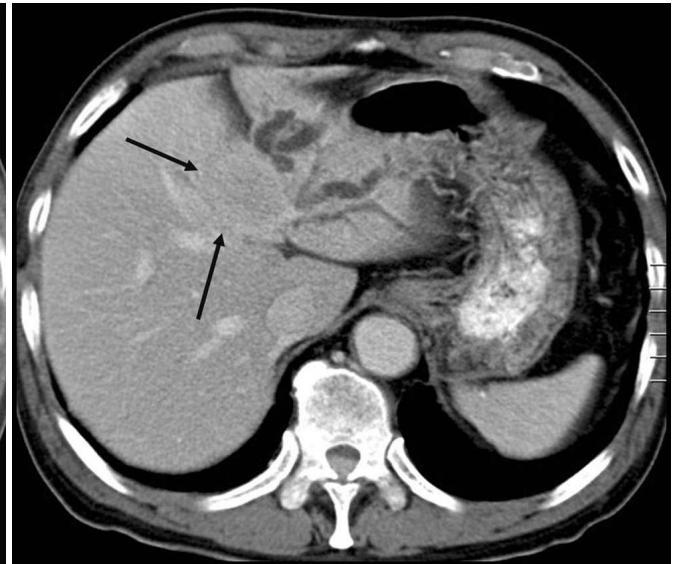
2006 1 10

(1).

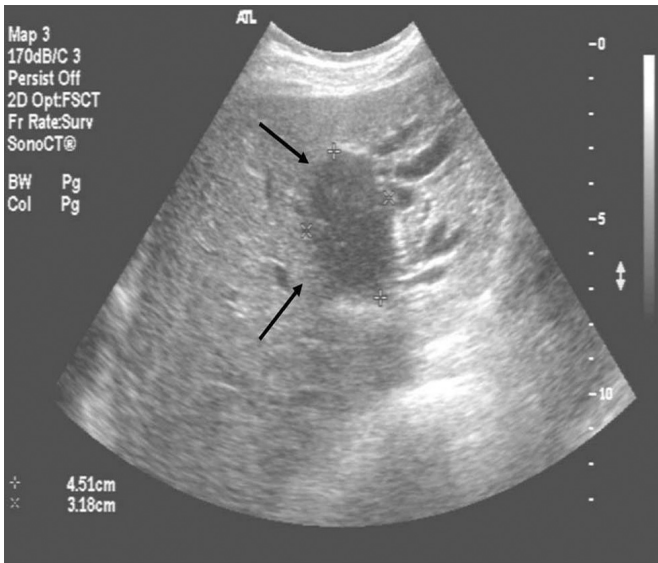
(7)



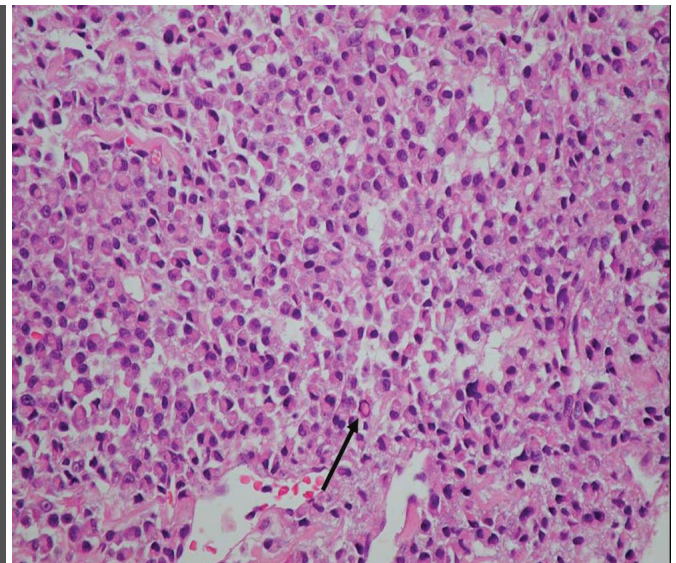
A



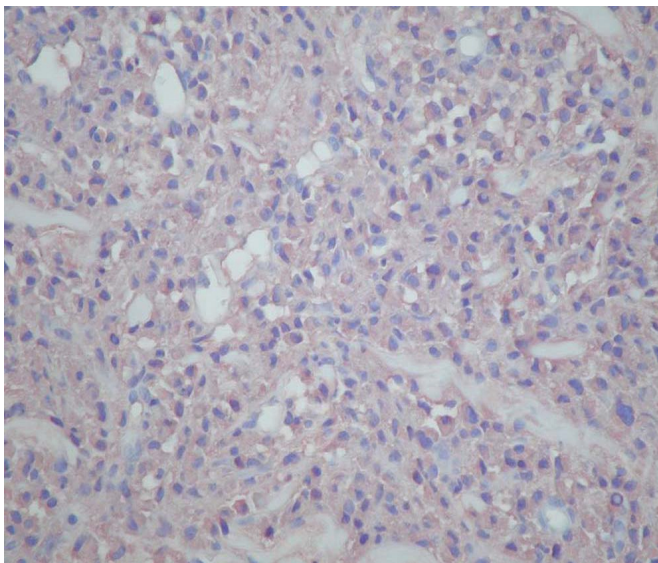
B



C



D



E

Fig. 1. A. Pre-contrast CT scan shows slightly low attenuated mass (arrow) with peripheral duct dilatation in the segment 4 of liver.

B. Contrast-enhanced CT scan shows a slightly enhancing mass (arrow) in the same area.

C. Abdominal ultrasonography shows a 4.5 × 3.2 cm size hypoechoic mass (arrow) with peripheral duct dilatation in the segment 4 of liver.

D. Microscopic finding of hepatic mass shows totally replaced hepatic parenchyma by plasma cells with mild to moderate cytologic atypia. Dutcher body (arrow) is also observed (H & E, × 200).

E. On immunohistochemical staining, the tumor cells show diffuse monoclonal immunoreactivity for lambda-light chain.

가 .
 ,
 가 CT
 , CT
 ,
 (8). CT
 ,
 CT
 ,
 가 .
 ,
 ,
 가
 ,
 CT MR

1. Patlas M, Khalili K, Dill-Macky MJ, Wilson SR. Spectrum of imaging findings in abdominal extraosseous myeloma. *AJR Am J Roentgenol* 2004;183:929-932
2. Moulopoulos LA, Granfield CA, Dimpoulos MA, Kim EE, Alexanian R, Libshitz HI. Extraosseous multiple myeloma: imaging features. *AJR Am J Roentgenol* 1993;161:1083-1087
3. Perez-Soler R, Esteban R, Allende E, Tornos Salomo C, Julia A, Guardia J. Liver involvement in multiple myeloma. *Am J Hematol* 1985;20:25-29
4. Kapadia SB. Multiple myeloma: a clinicopathologic study of 62 consecutively autopsied cases. *Medicine* 1980;59:380-392
5. Angutaco EJ, Fassas AB, Walker R, Sethi R, Barlogie B. Multiple myeloma: clinical review and diagnostic imaging. *Radiology* 2004;231:11-23
6. Simmons MZ, Miller JA, Levine CD, Glucksman WJ, Wachsberg RH. Myelomatous involvement of the liver: unusual ultrasound appearance. *J Clin Ultrasound* 1997;25:145-148
7. , , , , . 2002;8:490-494
8. Han JK, Choi BI, Kim AY, An SK, Lee JW, Kim TK, et al. Cholangiocarcinoma: pictorial Essay of CT and Cholangiographic Findings. *Radiographics* 2002;22:173-187

J Korean Radiol Soc 2006;55:267 - 269

Liver Involvement of Multiple Myeloma Mimicking Intrahepatic Cholangiocarcinoma: A Case Report¹

Kyoung Seuk Park, M.D., Jae-Joon Chung, M.D.^{1,3}, Jeong-Hae Kie, M.D.²,
 Myung Hyun Kim, M.D., Sumi Park, M.D., Hee Chul Yang, M.D.

¹Department of Diagnostic Radiology, NHIC Ilsan Hospital

²Department of Pathology, NHIC Ilsan Hospital

³Department of Diagnostic Radiology, YongDong Severance Hospital, YUMC

Nodular hepatic involvement of multiple myeloma is very rare. We report here on a case of nodular hepatic involvement of multiple myeloma that mimicked intrahepatic cholangiocarcinoma. In patients with multiple myeloma, hepatic involvement of the multiple myeloma might be included in the differential diagnosis of hepatic mass.

Index words : Myeloma

Liver neoplasms, CT

Liver neoplasms, US

Liver, biopsy

Address reprint requests to : Jae-Joon Chung, M.D., Department of Diagnostic Radiology, YongDong Severance Hospital, YUMC
 1146-92 Dogok-dong, Gangnam-gu, Seoul 135-270, Korea.
 Tel. 82-2-2019-3512 Fax. 82-2-3462-5472 E-mail: jjchung@yumc.yonsei.ac.kr